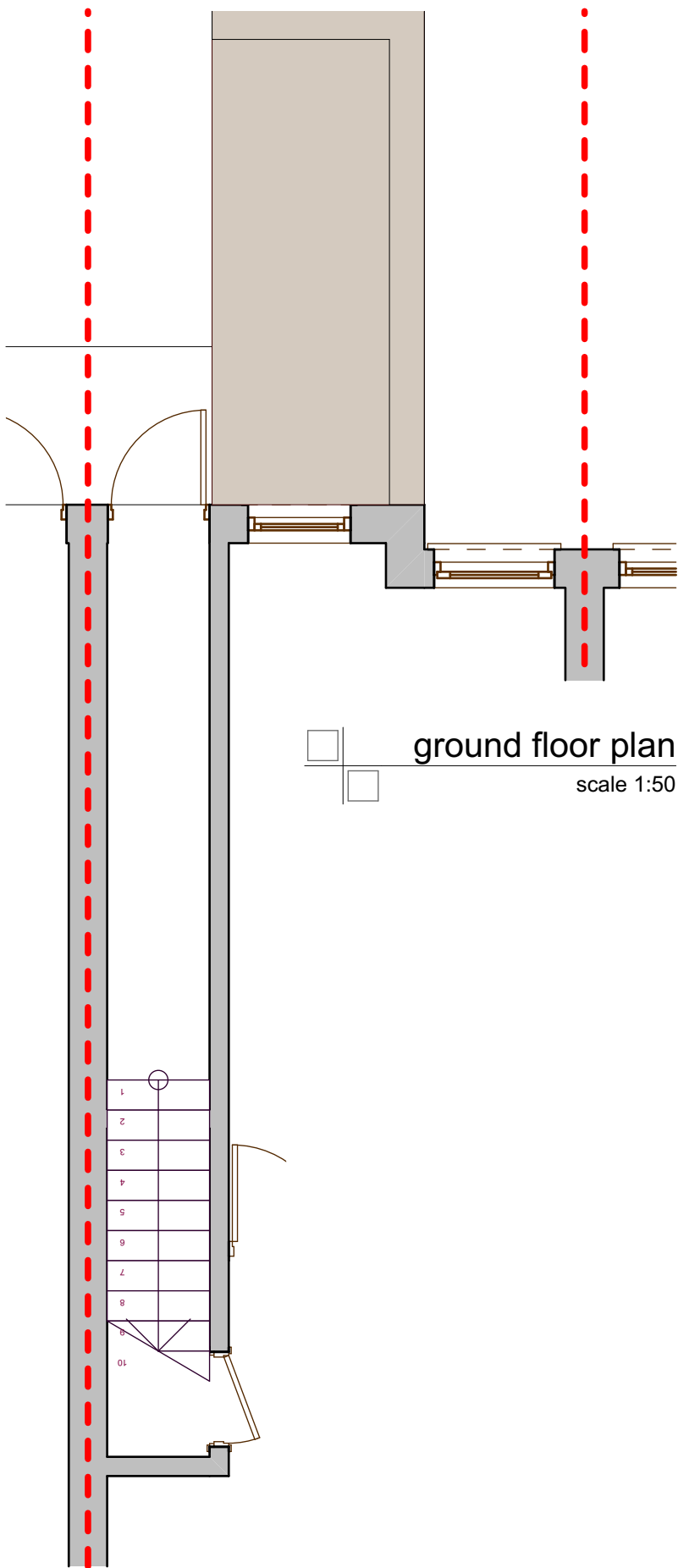


RevID	Comment
A	Bedroom & living swapped in flat 2
B	entrance flat 2 and ensuite flat 1 amended
C	terrace screening detail added
D	en-suite rooms revised and kitchens/ living areas altered
E	revised to 2 x 1 bed flats
F	room names altered

Transmitted By	Transmitted Date
IDP	25-10-2019
IDP	25-10-2019
IDP	20-1-2020
IDP	15-5-2020
IDP	18-5-2020
IDP	24-8-2020

preliminary

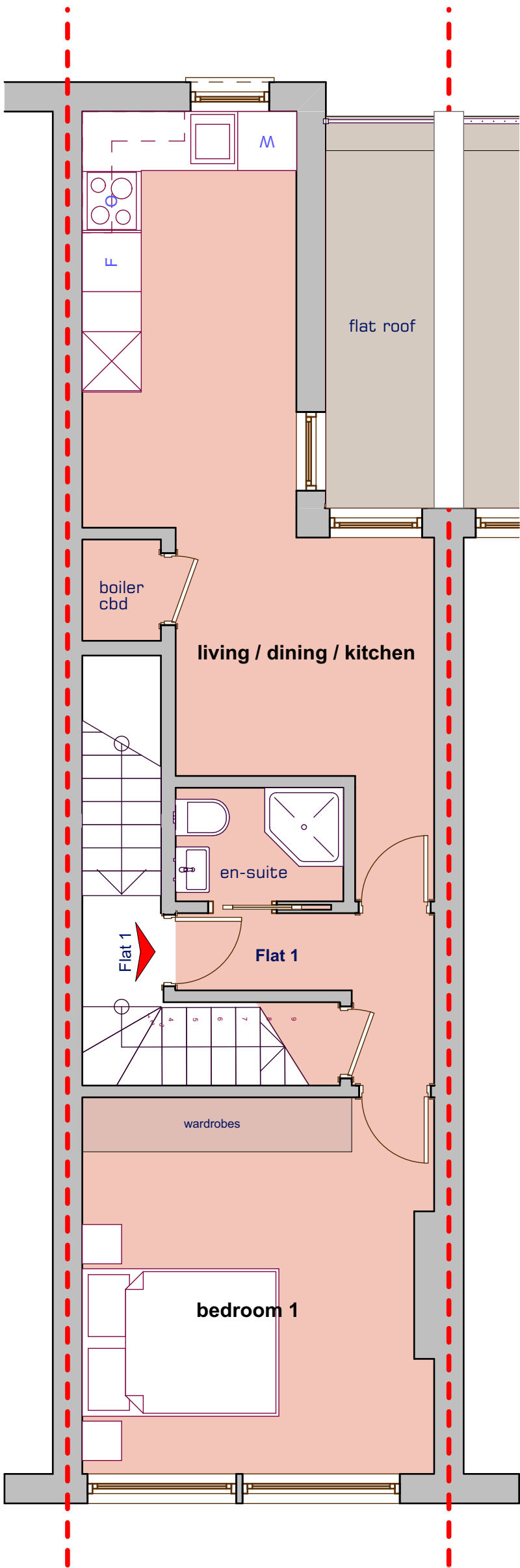


ground floor plan
scale 1:50

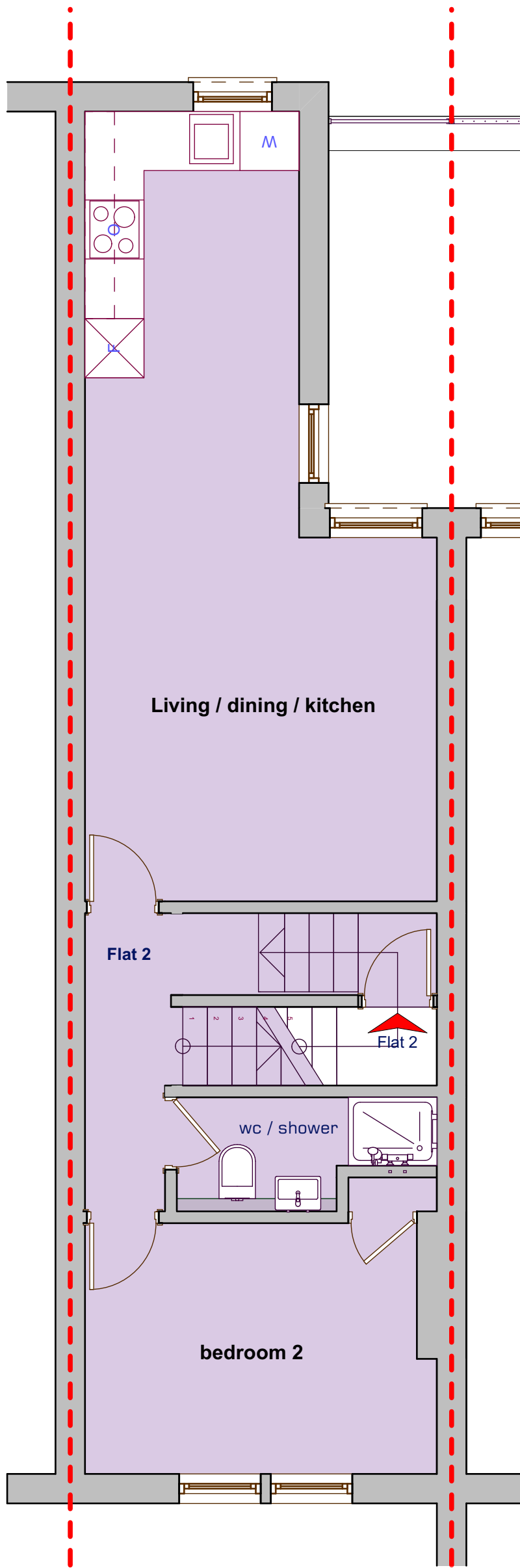
Principal room areas		
Story		Area sqm
First Floor, Flat 1	bedroom 1	13.41
	living / dining / kitchen	16.72
second floor, Flat 2	bedroom 2	9.24
	Living / dining / kitchen	22.77
third floor, Flat 2	bedroom	22.68
	Dressing room	7.77
		92.59 m²

Schedule of areas		
	Story	Area
Flat 1	First Floor	37.95
		37.95 m²
Flat 2	second floor	42.41
	third floor	26.28
		68.69 m²
office	Ground Floor	42.37
		42.37 m²
		149.01 m²

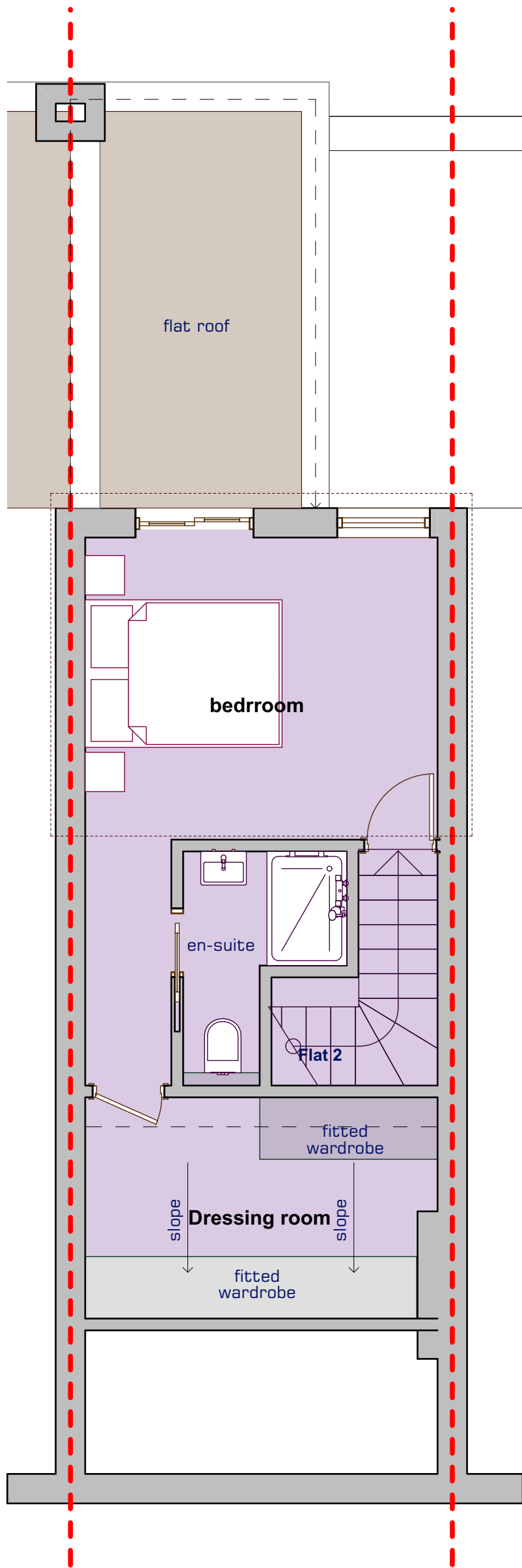
Table 1 - Minimum gross internal floor areas and storage (m²)					
Number of bedrooms(b)	Number of bed spaces (persons)	1 storey dwellings	2 storey dwellings	3 storey dwellings	Built-in storage
1b	1p	39 (37) ²			1.0
	2p	50	58		1.5
2b	3p	61	70		2.0
	4p	70	79		
3b	4p	74	84	90	2.5
	5p	86	93	99	
	6p	95	102	108	
4b	5p	90	97	103	3.0
	6p	99	106	112	
	7p	108	115	121	
	8p	117	124	130	
5b	6p	103	110	116	3.5
	7p	112	119	125	
	8p	121	128	134	
	7p	116	123	129	
6b	8p	125	132	138	4.0
	8p	125	132	138	



first floor plan
scale 1:50



second floor plan
scale 1:50



third floor plan
scale 1:50