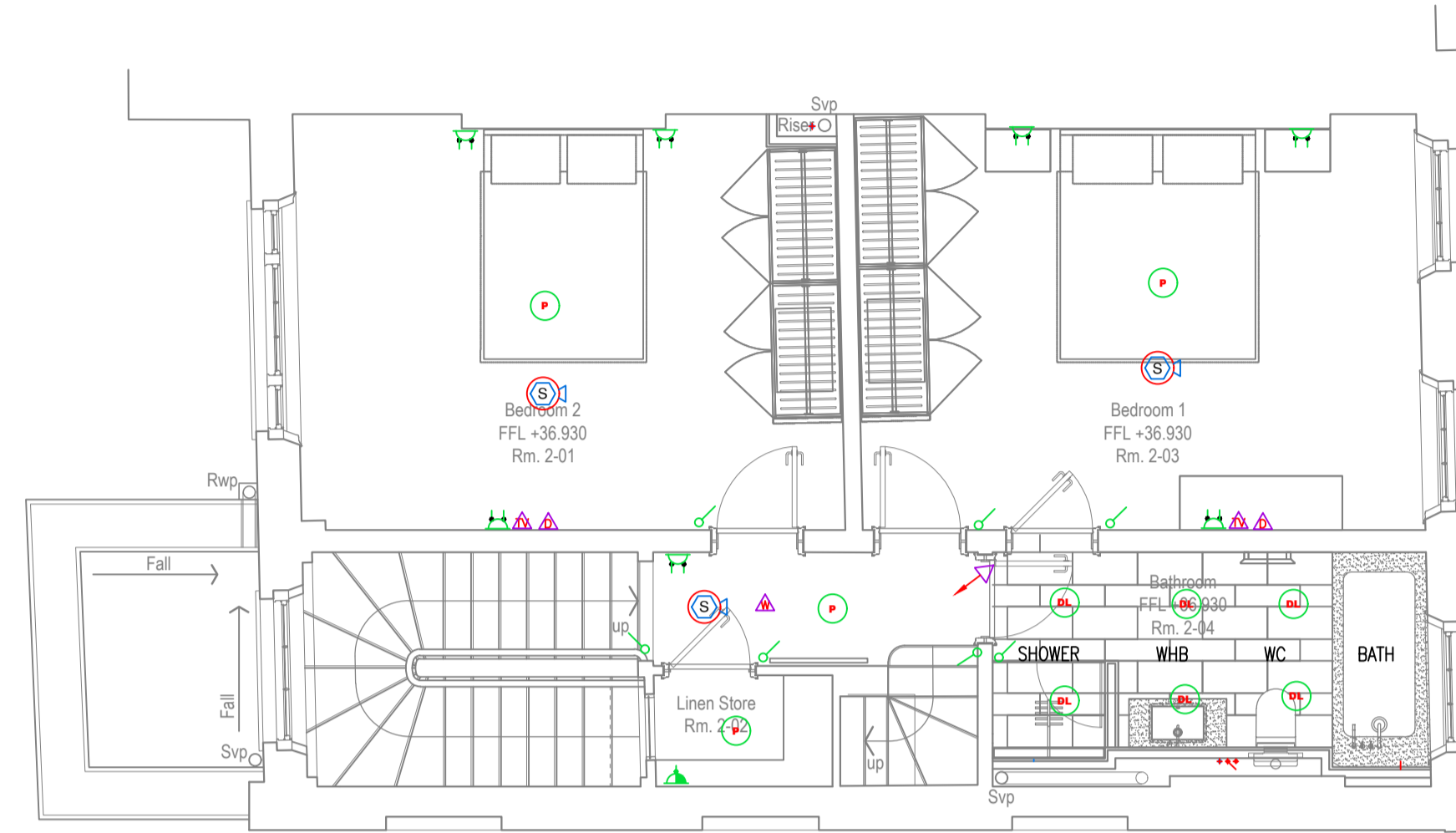
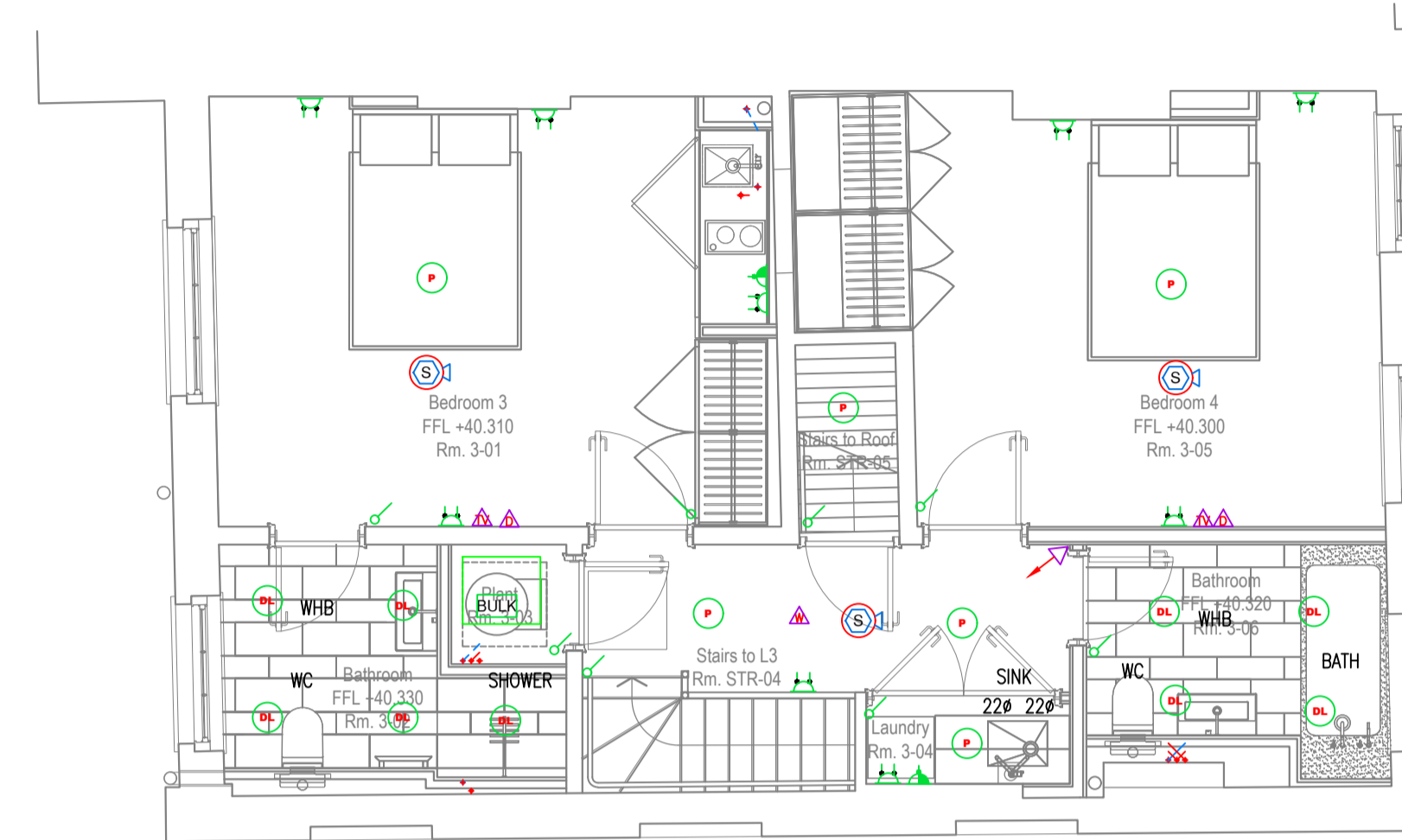


**NOTE:**

- . All cable to be Isf.
- . All lighting to be LED.
- . All electrical accessories to be white plastic.
- . Electrical installation to comply with BS7671 18th Edition.
- . NICEIC electrical installation report to be provided and submitted to the local building control office.
- . CCTV to comply with NCP 104 and provide a valid NSI certification, Proposal to be issued and agreed by client / insurers.
- . Intruder alarm to comply with PD6662 and provide a valid NSI certification, Proposal to be issued and agreed by client / insurers.
- . All services to be metered:
  - Electrical
  - Mechanical
  - Water
  - Gas
- . Water and gas to be fitted with a pulse sensor.
- . All distribution boards to be metered, with a pulse output.
- . Digital energy screen to be installed to show and record all energy usage, location to be confirmed.

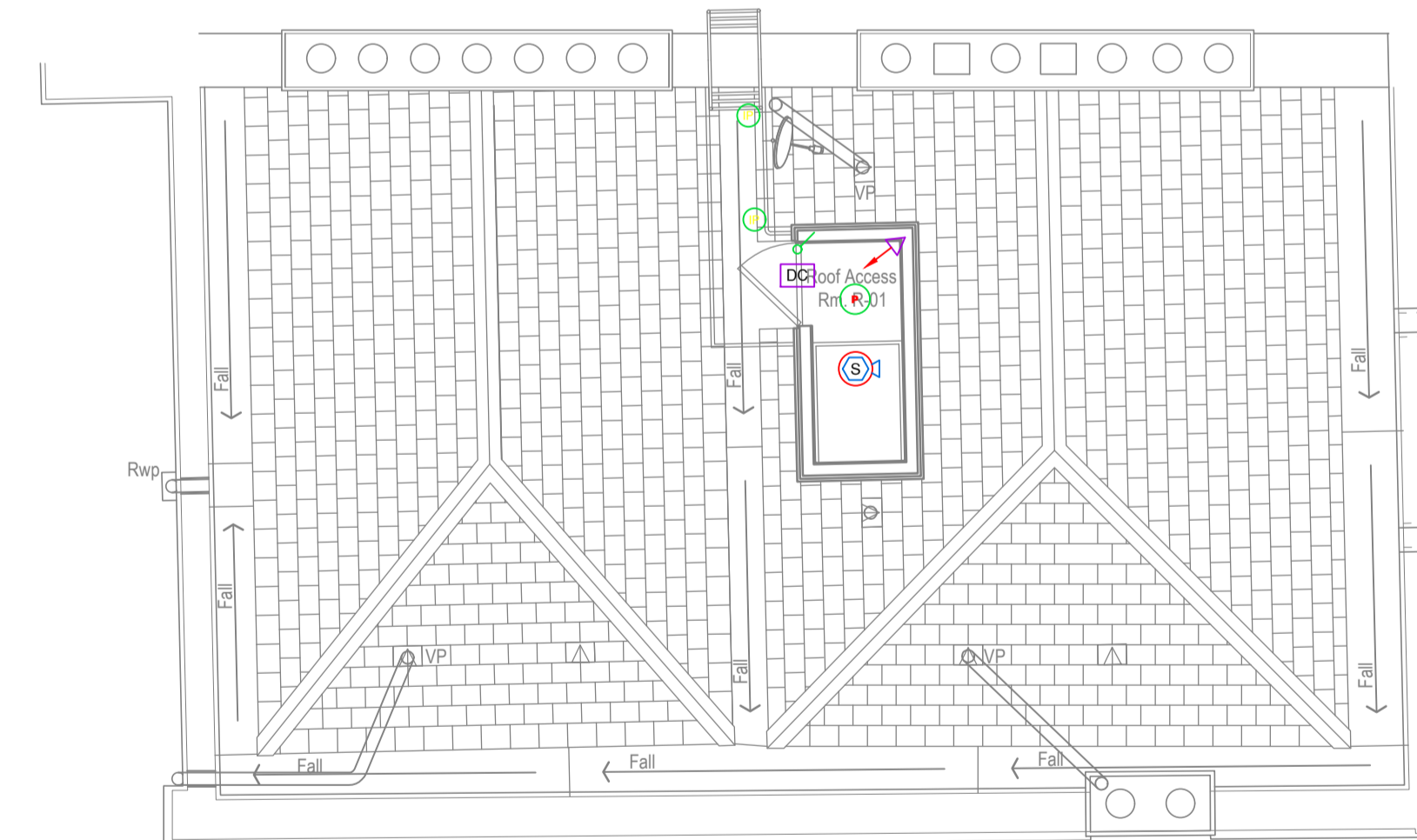


SECOND FLOOR



THIRD FLOOR

KEY TO REFERENCE SYMBOLS		
<b>LV DISTRIBUTION EQUIPMENT</b>	<b>DISABLED ALARMS</b>	<b>DATA / IT EQUIPMENT RACK</b>
TP&N MCCB PANEL BOARD	DISABLED ASSISTANCE ALARM PSU/RESET UNIT	DATA / COMMS CABINET
TP&N DISTRIBUTION BOARD	DISABLED ASSISTANCE ALARM RESET UNIT @1000mm AFFL	DATA POINT FOR WIRELESS ACCESS
CONTACTOR ENCLOSURE	DISABLED ASSISTANCE ALARM PULL CORD	TV & SAT OUTLET
<b>SMALL POWER</b>	DISABLED ASSISTANCE ALARM AUDIO/VISUAL INDICATOR - WALL / CEILING MOUNTED	RJ45 DATA OUTLET (QUANTITY OF OUTLETS AS DETAILED)
SINGLE SWITCHED SOCKET OUTLET	DISABLED ASSISTANCE ALARM AUDIO/VISUAL INDICATOR - WALL / CEILING MOUNTED	INCOMING BT DP / FIBRE POINT
DOUBLE SWITCHED SOCKET OUTLET	UNDER-COUNTER MOUNTED AUDIO INDUCTION LOOP	RECESSED SPEAKER
SWITCHED FUSED CONNECTION UNIT (WITH SUITABLY RATED BS1362 FUSE)	<b>ACCESS CONTROL</b>	WALL MOUNTED SPEAKER
UN-SWITCHED FUSED CONNECTION UNIT (WITH SUITABLY RATED BS1362 FUSE)	ACCESS CONTROL PANEL W/ INTEGRAL PSU	VOLUME CONTROL
20 AMP DOUBLE POLE SWITCH	ACCESS KEYPAD	MISCELLANEOUS
TWIN SWITCHED SOCKET OUTLET IN FLUSH INSTALLED FLOOR BOX - INLAY TO MATCH SURROUNDING FLOOR FINISH	EMERGENCY EGRESS BREAKGLASS	FIRE ALARM PANEL
THREE PHASE ISOLATOR (RATING AS NOTED ON THE DRAWING)	PUSH TO OPEN BUTTON	SOUNDER / BUZZER
SINGLE PHASE ISOLATOR (RATING AS NOTED ON THE DRAWING)	ELECTRONIC MAGLOCK	SOUNDER / BUZZER PUSH BUTTON
<b>LIGHTING CONTROLS</b>	<b>INTRUDER ALARM</b>	MANUAL CALL POINT
1 WAY LIGHT SWITCH (Nr. GANG AS STATED)	INTRUDER ALARM PANEL & PSU	SMOKE DETECTOR
2 WAY LIGHT SWITCH (Nr. GANG AS STATED)	REMOTE KEYPAD	HEAT DETECTOR
LED DOWNLIGHT	DOOR CONTACT	SMOKE DETECTOR SOUNDER BASE
LED WALL LIGHT	UNDER COUNTER PANIC ALARM BUTTON	HEAT DETECTOR SOUNDER BASE
LED PENDANT LIGHT	DUAL TECH PIR	SMOKE DETECTOR IN CEILING VOID
LED BULK HEAD	360° DETECTOR	SMOKE DETECTOR BEACON
IP RATED LED FITTING	EXTERNAL SOUNDER/BEACON	SMOKE DETECTOR SOUNDER BEACON
	CCTV DOME CAMERA (FIXED)	SOUNDER BEACON (WALL MOUNTED)



ROOF

REV	DATE	DESCRIPTION	DRAWN	CHECKED

**PROJECT**

**19 Fitzory Square  
London**

**DRAWING**

**PROPOSED  
Electrical / Data / Intruder / CCTV / FIRE  
2ND / 3RD FLOOR / ROOF**



PROJECT No	SCALE	DATE	DRWN / CHKD
ISGLFS01	NOT SCALED	26/05/2020	DS DS

FILE NAME	[STATUS-REV]
1	{0-0}