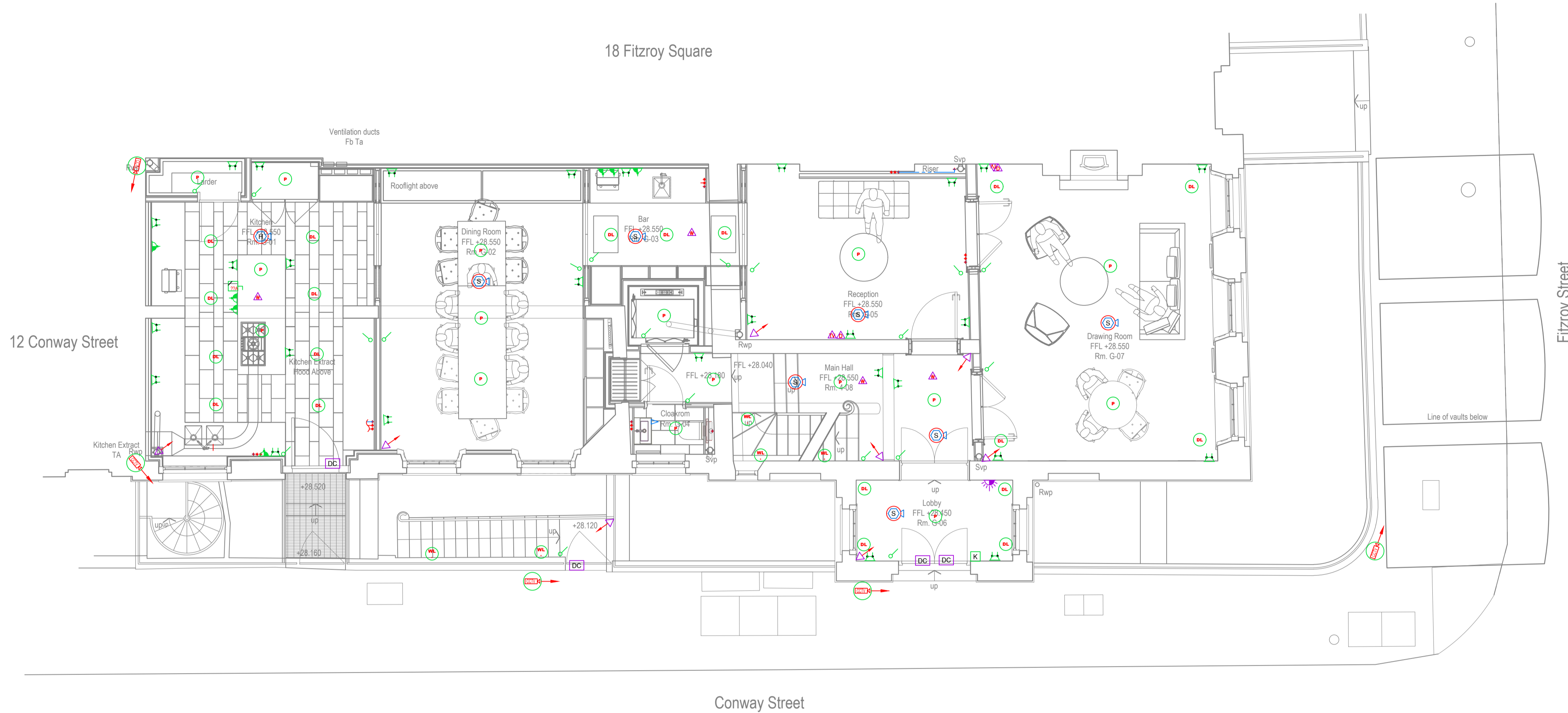


**NOTE:**

- . All cable to be Isf.
- . All lighting to be LED.
- . All electrical accessories to be white plastic.
- . Electrical installation to comply with BS7671 18th Edition.
- . NICEIC electrical installation report to be provided and submitted to the local building control office.
- . CCTV to comply with NCP 104 and provide a valid NSI certification, Proposal to be issued and agreed by client / insurers.
- . Intruder alarm to comply with PD6662 and provide a valid NSI certification, Proposal to be issued and agreed by client / insurers.
- . All services to be metered:
  - Electrical
  - Mechanical
  - Water
  - Gas
- . Water and gas to be fitted with a pulse sensor.
- . All distribution boards to be metered, with a pulse output.
- . Digital energy screen to be installed to show and record all energy usage, location to be confirmed.



**KEY TO REFERENCE SYMBOLS**

<b>LV DISTRIBUTION EQUIPMENT</b>		<b>DISABLED ALARMS</b>		<b>DATA / IT EQUIPMENT RACK</b>	
	TP&N MCCB PANEL BOARD		DISABLED ASSISTANCE ALARM PS/RESET UNIT		DATA / COMMS CABINET
	TP&N DISTRIBUTION BOARD		DISABLED ASSISTANCE ALARM RESET UNIT @1000mm AFFL		DATA POINT FOR WIRELESS ACCESS
	CONTACTOR ENCLOSURE		DISABLED ASSISTANCE ALARM PULL CORD		TV & SAT OUTLET
<b>SMALL POWER</b>			DISABLED ASSISTANCE ALARM AUDIO/VISUAL INDICATOR - WALL / CEILING MOUNTED		RJ45 DATA OUTLET (QUANTITY OF OUTLETS AS DETAILED)
	SINGLE SWITCHED SOCKET OUTLET		UNDER-COUNTER MOUNTED AUDIO INDUCTION LOOP		INCOMING BT DP / FIBRE POINT
	DOUBLE SWITCHED SOCKET OUTLET		ACCESS CONTROL		<b>MUSIC/AUDIO (BY CLIENT DIRECT CONTRACTOR)</b>
	SWITCHED FUSED CONNECTION UNIT (WITH SUITABLY RATED BS1362 FUSE)		ACCESS CONTROL PANEL W/ INTEGRAL PSU		RECESSED SPEAKER
	UN-SWITCHED FUSED CONNECTION UNIT (WITH SUITABLY RATED BS1362 FUSE)		ACCESS KEYPAD		WALL MOUNTED SPEAKER
	20 AMP DOUBLE POLE SWITCH		EMERGENCY EGRESS BREAKGLASS		VOLUME CONTROL
	TWIN SWITCHED SOCKET OUTLET IN FLUSH INSTALLED FLOOR BOX - INLAY TO MATCH SURROUNDING FLOOR FINISH		PUSH TO OPEN BUTTON		<b>MISCELLANEOUS</b>
	THREE PHASE ISOLATOR (RATING AS NOTED ON THE DRAWING)		ELECTRONIC MAGLOCK		FIRE ALARM PANEL
	SINGLE PHASE ISOLATOR (RATING AS NOTED ON THE DRAWING)		INTRUDER ALARM		SOUNDER / BUZZER
<b>LIGHTING CONTROLS</b>			INTRUDER ALARM PANEL & PSU		SOUNDER / BUZZER PUSH BUTTON
	1 WAY LIGHT SWITCH (N: GANG AS STATED)		REMOTE KEYPAD		MANUAL CALL POINT
	2 WAY LIGHT SWITCH (N: GANG AS STATED)		INTERNAL SOUNDER		SMOKE DETECTOR
	LED DOWNLIGHT		DOOR CONTACT		HEAT DETECTOR
	LED WALL LIGHT		UNDER COUNTER PANIC ALARM BUTTON		SMOKE DETECTOR SOUNDER BASE
	LED PENDANT LIGHT		DUAL TECH PIR		HEAT DETECTOR SOUNDER BASE
	LED BULK HEAD		360° DETECTOR		SMOKE DETECTOR IN CEILING VOID
	IP RATED LED FITTING		EXTERNAL SOUNDER/BEACON		SMOKE DETECTOR BEACON
			CCTV DOME CAMERA (FIXED)		SMOKE DETECTOR SOUNDER BEACON
					SOUNDER BEACON (WALL MOUNTED)

REV	DATE	DESCRIPTION	DRAWN	CHECKED
PROJECT				
19 Fitzroy Square				
London				
DRAWING				
PROPOSED				
Electrical / Data / Intruder / CCTV / FIRE				
Ground Floor				

**PROJECT**  
19 Fitzroy Square  
London

**DRAWING**  
PROPOSED  
Electrical / Data / Intruder / CCTV / FIRE  
Ground Floor



PROJECT No	SCALE	DATE	DRWN / CHKD
ISGLFS01	NOT SCALED	26/05/2020	DS DS
FILE NAME	[STATUS-REV]		
1	{0-0}		