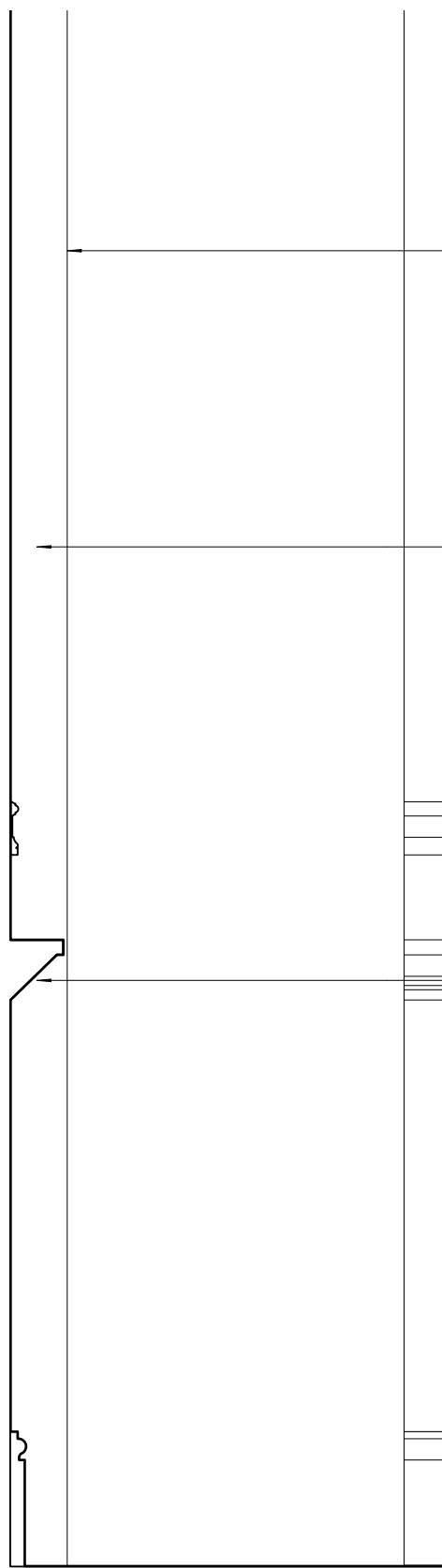
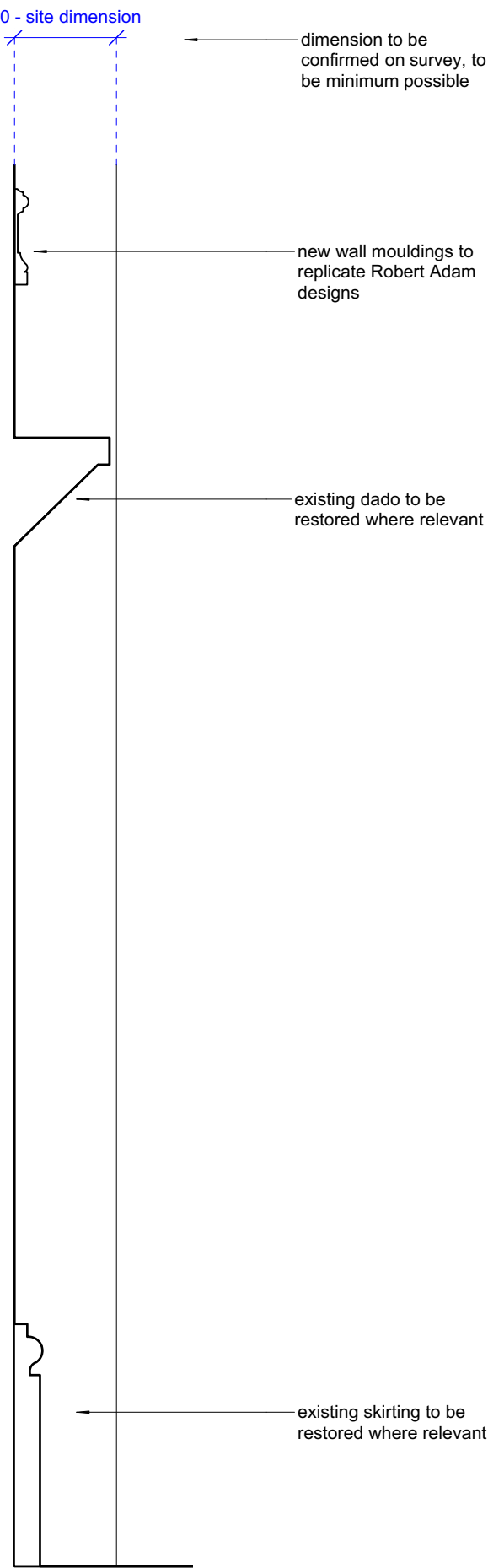


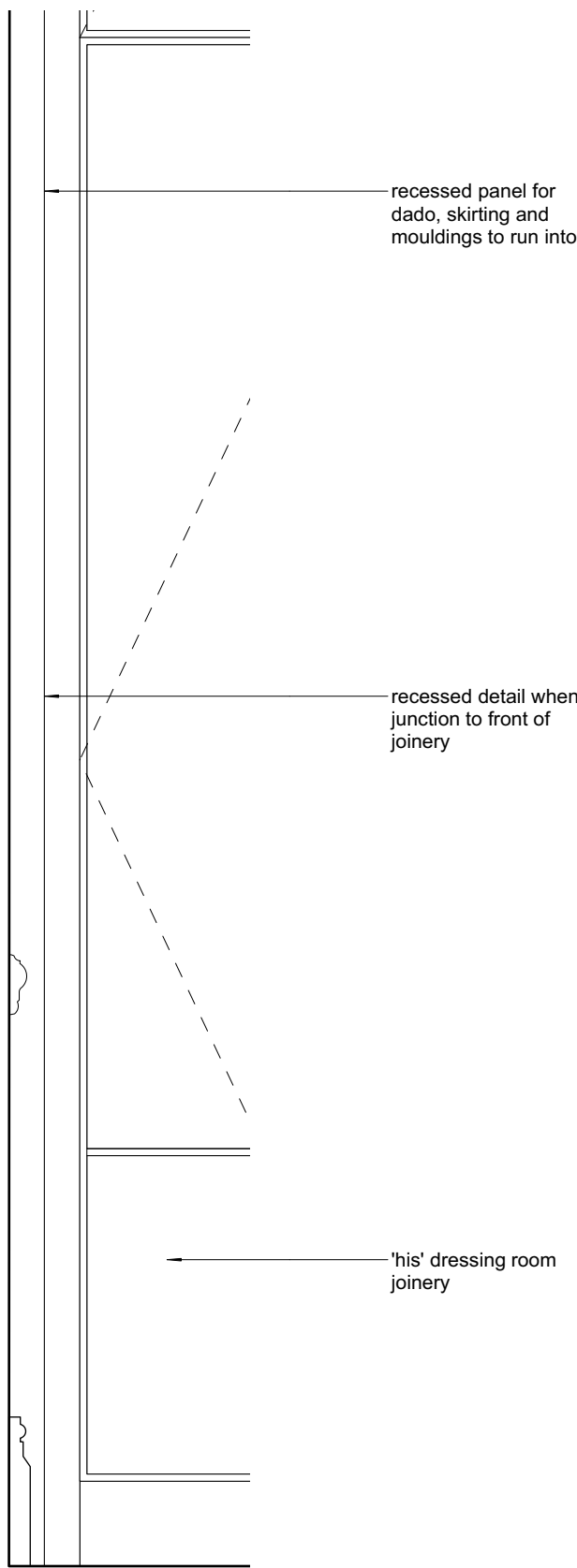
D1 joinery detail - front elevation
1:10



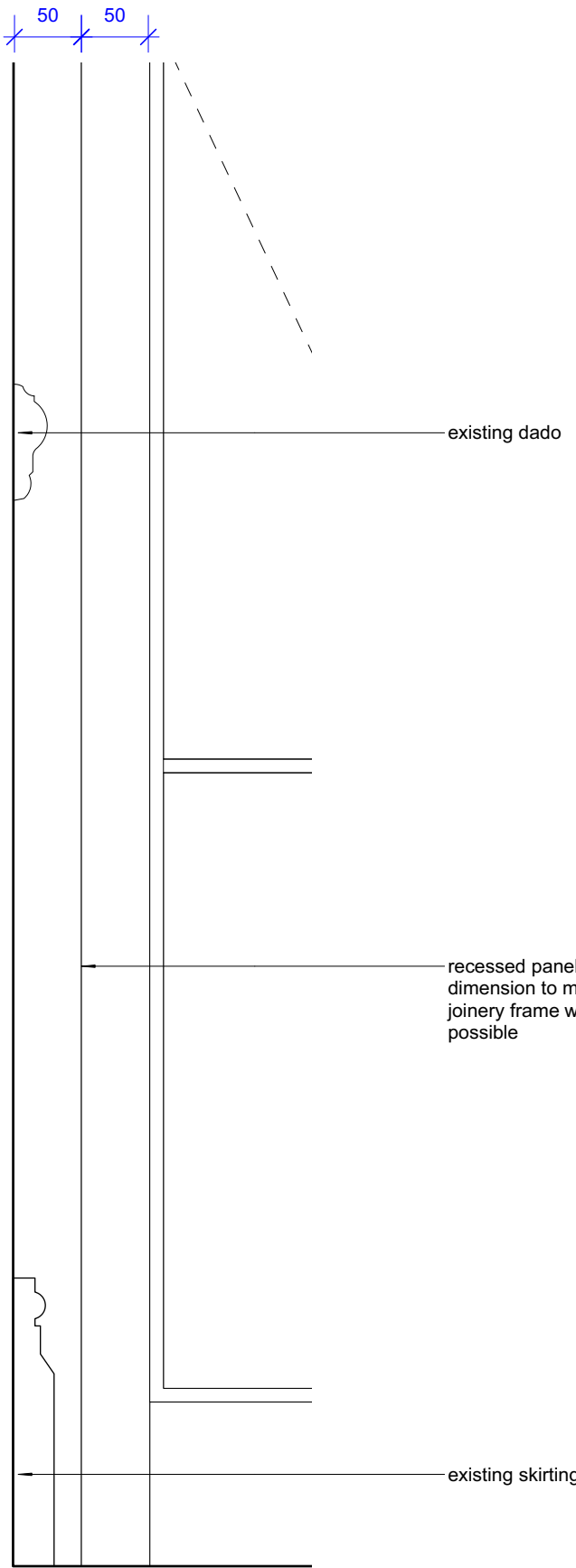
D2 joinery detail - side elevation
1:10



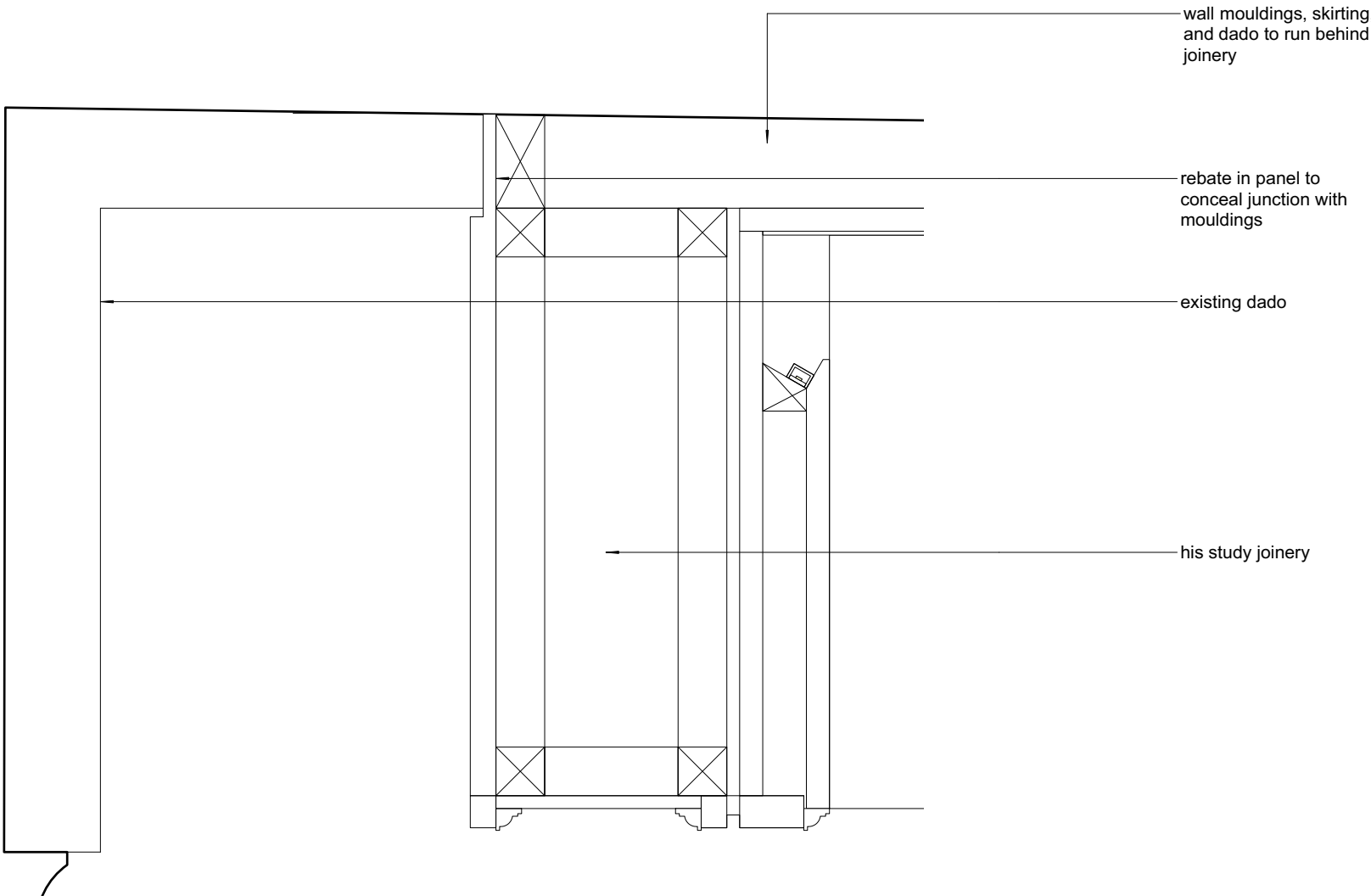
D3 joinery detail - side elevation
1:5



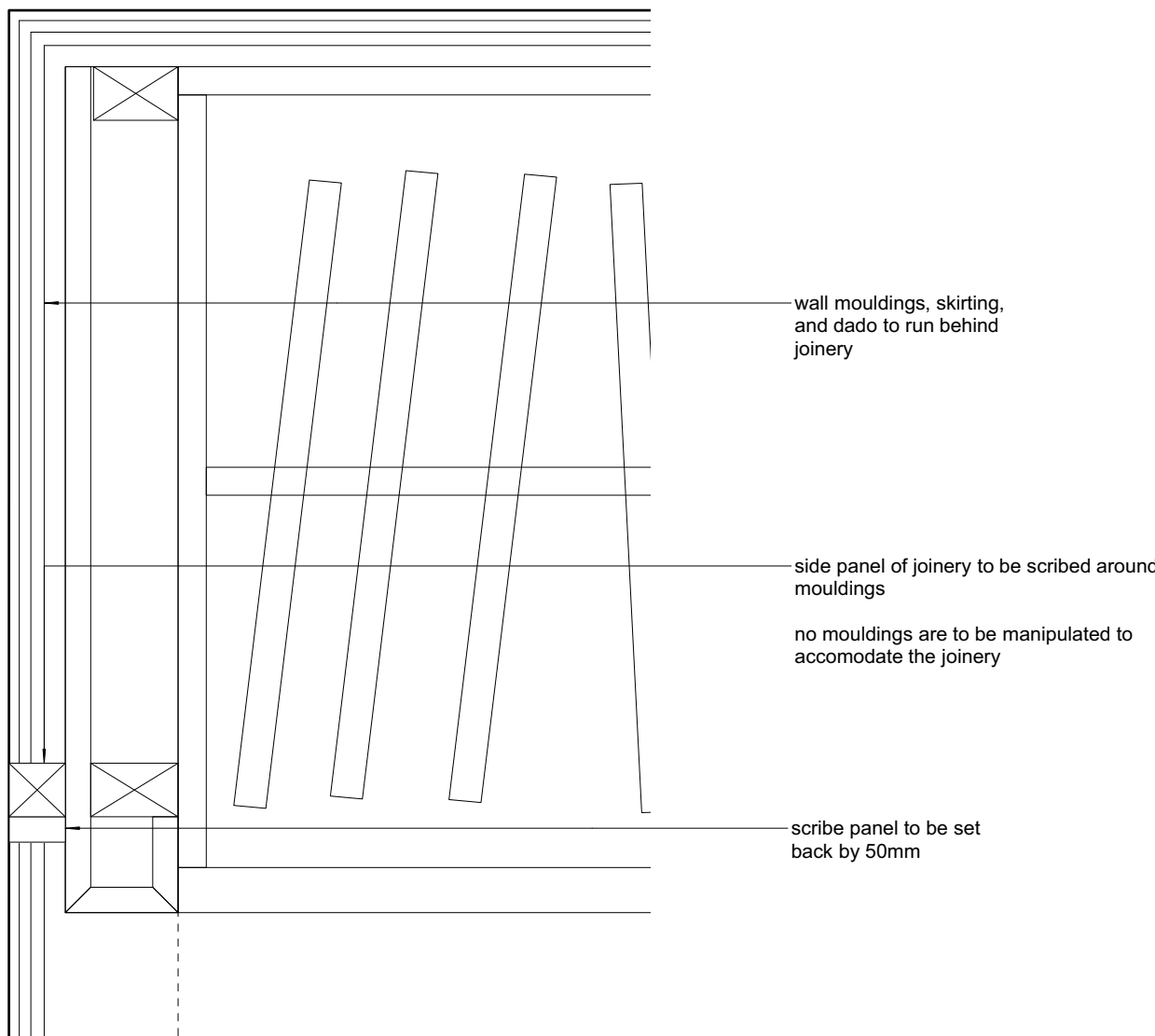
D4 joinery detail - front elevation
1:10



D5 joinery detail - front elevation
1:5



P joinery detail plan - side junction
1:5



P joinery detail plan - front face junction
1:5

General Notes

1. This drawing is for design intent only. Verify all dimensions on site before commencing any work or production drawings. Construction details to be confirmed by contractor/manufacturer via submission of shop drawings for designer's approval.
2. Do not scale from this drawing for production and construction purposes
3. Any discrepancy and omissions between this drawing and other information to be referred to designer for comment before commencing any work
4. This drawing to be read in conjunction with all relevant designer's and architect's drawings, schedules specifications, etc relating to the project along with other consultants information
5. Designs are subject to approval by statutory authorities and any necessary alterations should be made if required to comply with statutory requirements
6. All designs are the property of Laura Hammett Ltd and cannot be used without their written consent. Copyright reserved © 2017. Confidential intellectual property of Laura Hammett Ltd.

Detail Notes

Colour rendering for materials on elevation drawings is indicative only; Contractor to review with LH finishes schedule for material specifications. Contractor to provide samples of all materials and finishes for LH approval.

Review all details in conjunction with LH plan and elevation drawings.

Details shown for design intent of profile only; full construction design and non-visible elements to be confirmed by Contractor or appointed specialist prior to fabrication.

Rev	Date	Revision
-	-	-

Client	Project
Furland	Fitzroy Square
Proposed Drawing	
Joinery Junction Details	
Scale	Date
As Noted @ A1 / Half Scale @ A3	13/08/20
Project No.	Drawing No.
1910	703
Revision	Issued For
-	TENDER

L A U R A H A M M E T T
L U X U R Y I N T E R I O R S

25 Elysium Gate
126-128 New Kings Road
London SW6 4LZ

+44 (0) 20 7731 7369
design@laurahammett.com
www.laurahammett.com