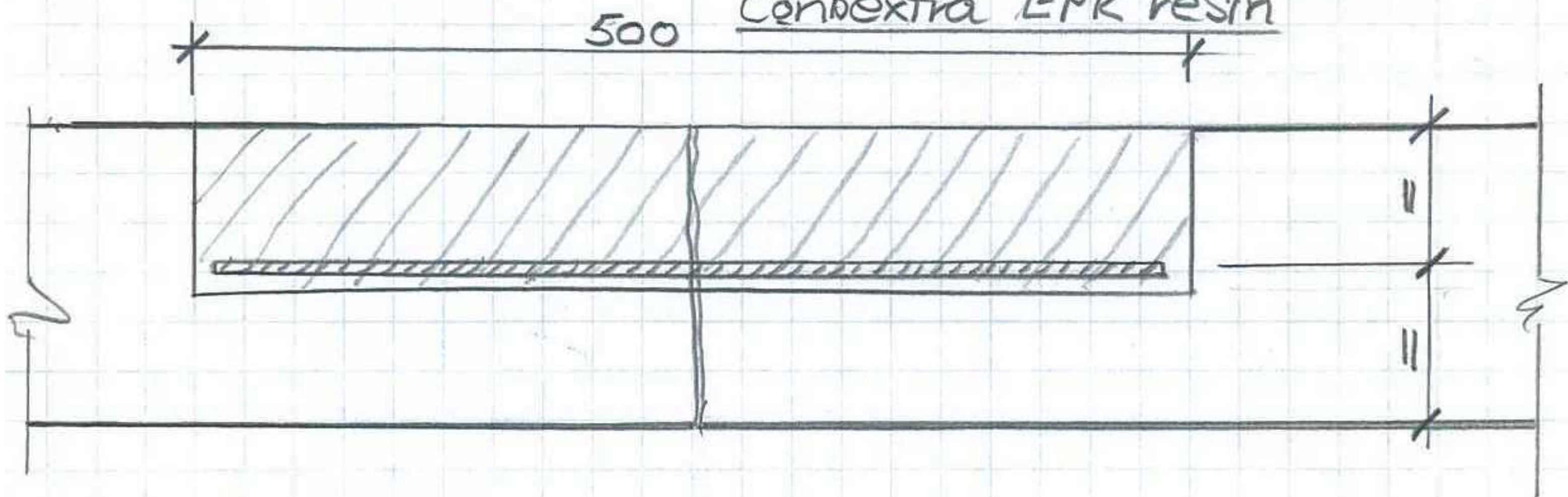
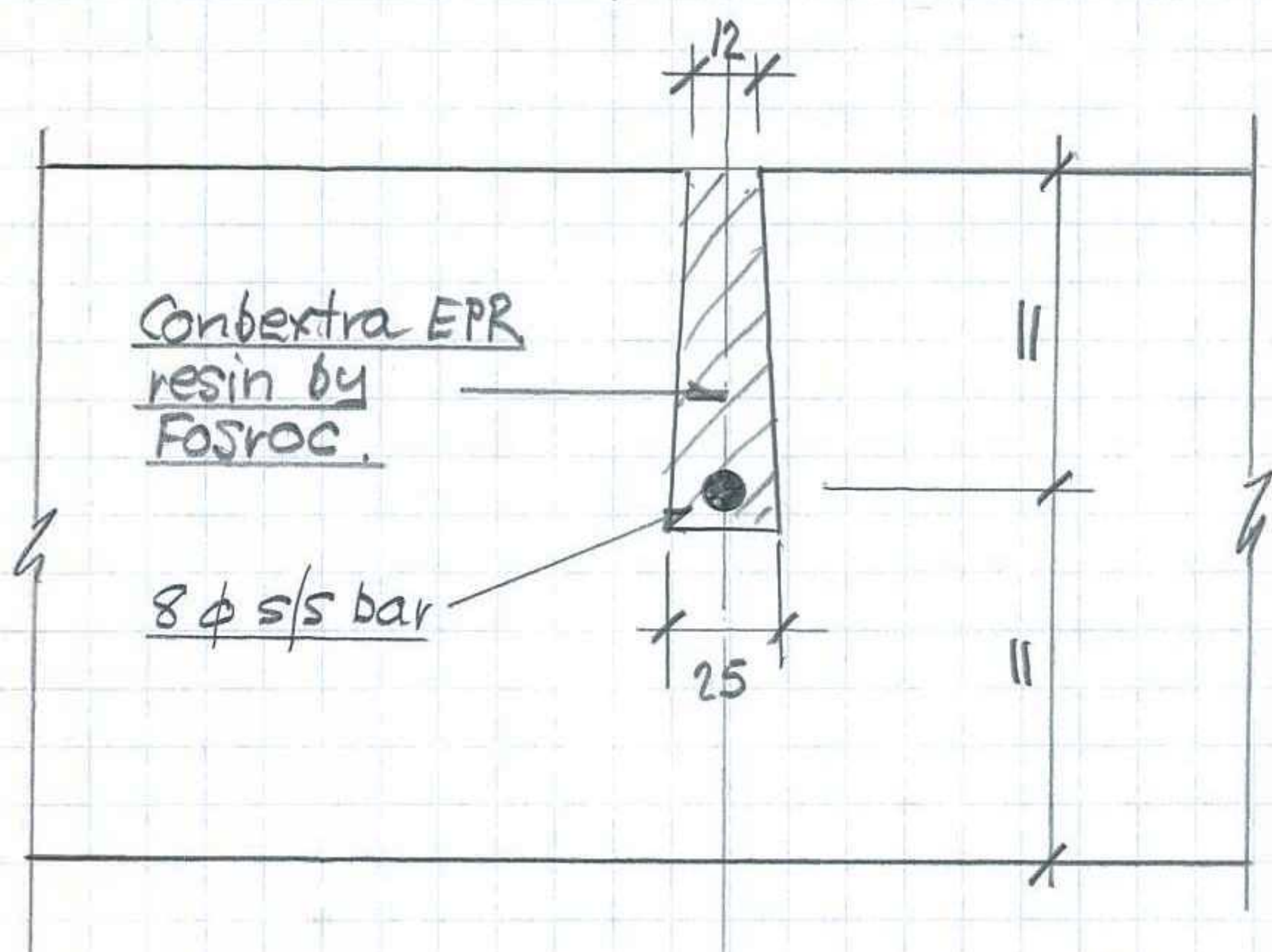


Repair of cracks in Landings

8mm dia. stainless steel deformed
bars set into 12mm wide trenches
and resin grouted with Fosroc
Conbextra EPR resin



Long section through crack repair (1:50)



Section through trench (1:2.5)

Centres of trenches depend on geometry and severity
of crack

NOTES:

REVISIONS:

A 14.08.20 CONDITION 3

PROJECT:
3 Fitzroy Square

DRAWING TITLE:
STAIRCASE REPAIRS -
STITCHING REPAIR

STATUS:
PLANNING

NOTE:
Do not scale from the drawing. Any discrepancies
to be reported to the architect.
All dimensions will be taken on site prior to
ordering and construction.
Copyright remains with the architect.
This drawing is to be read in conjunction with the
specification and all other relevant drawings.

JAMES GORST
ARCHITECTS Ltd

35 Lamb's Conduit Street
London
WC1N 3NG

t 020 7336 7140
f 020 7336 7150
e info@jamesgorstarchitects.com

DRAWING SCALE:	DRAWING NUMBER:	REVISION:
-	LKB09_543	A