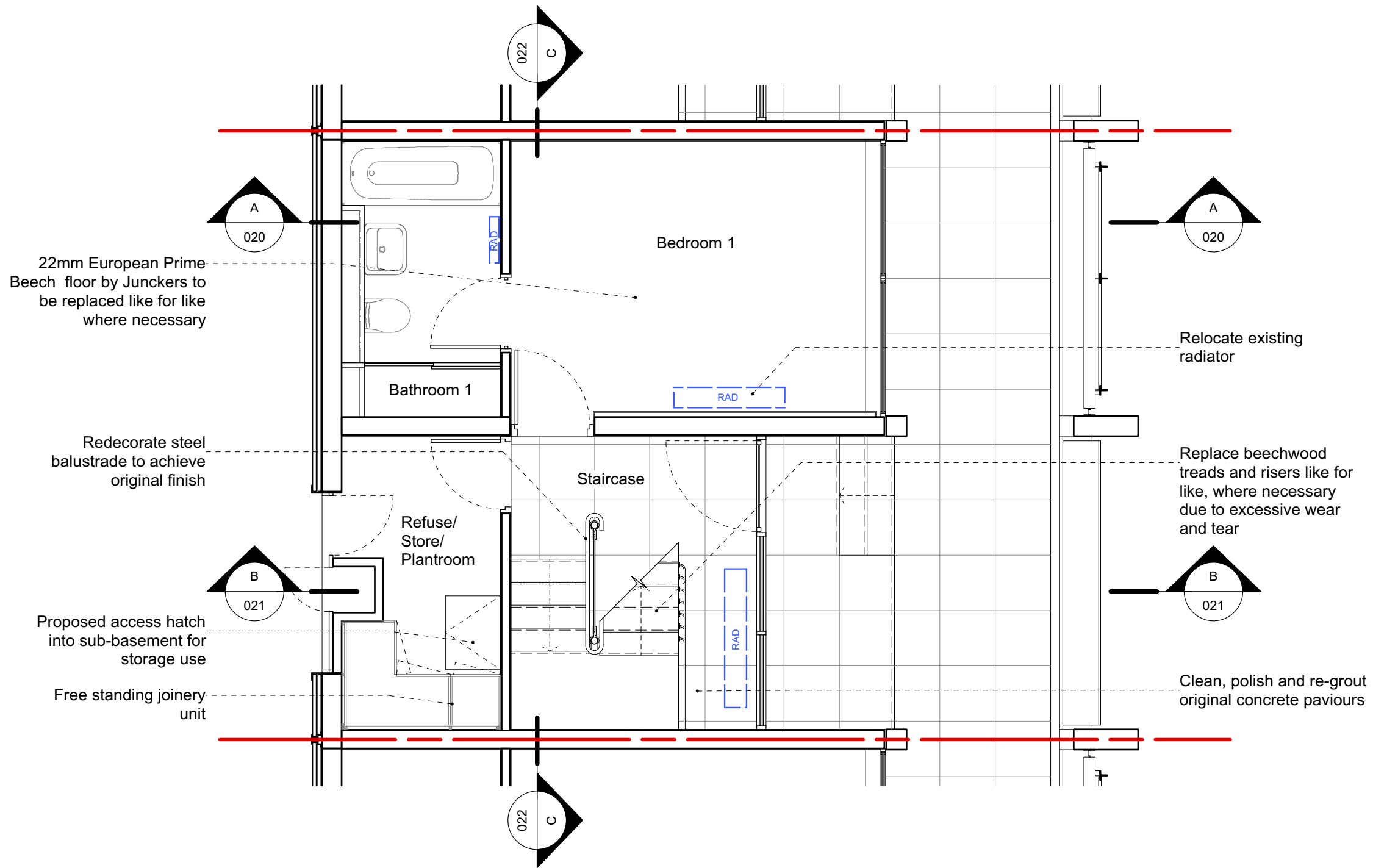


General note:
 Replace all face fixed pipework and wiring with pipework and wiring concealed in walls and floors, as per the original design;
 tidy and clean up interior to re-instate original high-tech appearance where possible

General Notes
 Do not scale from this drawing
 All dimensions to be verified on site
 To be read in conjunction with all relevant documents
 In the event of discrepancy notify the Architect immediately
 This document is copyright of Hugh Cullum Architects Ltd

Issue Status

SK	Sketch	E	Existing Condition
D	Design	P	Permissions
T	Tender	C	Contract



Proposed_Ground Floor Plan

(B): Bathroom layout retained; stair balustrade added; plant room layout revised; annotations amended	29.06.20 /TS/TS)
(A): Annotations revised; additional information to plant room	12.05.20 /TS/TS)
(): Revision Information	10.01.20 /TS/TS)

HUGH CULLUM ARCHITECTS LTD
 Bloomsbury Design
 61b Judd Street
 London WC1H 9QT
 t 020 7383 7647
 f 020 7387 7645
 mail@hughcullum.com

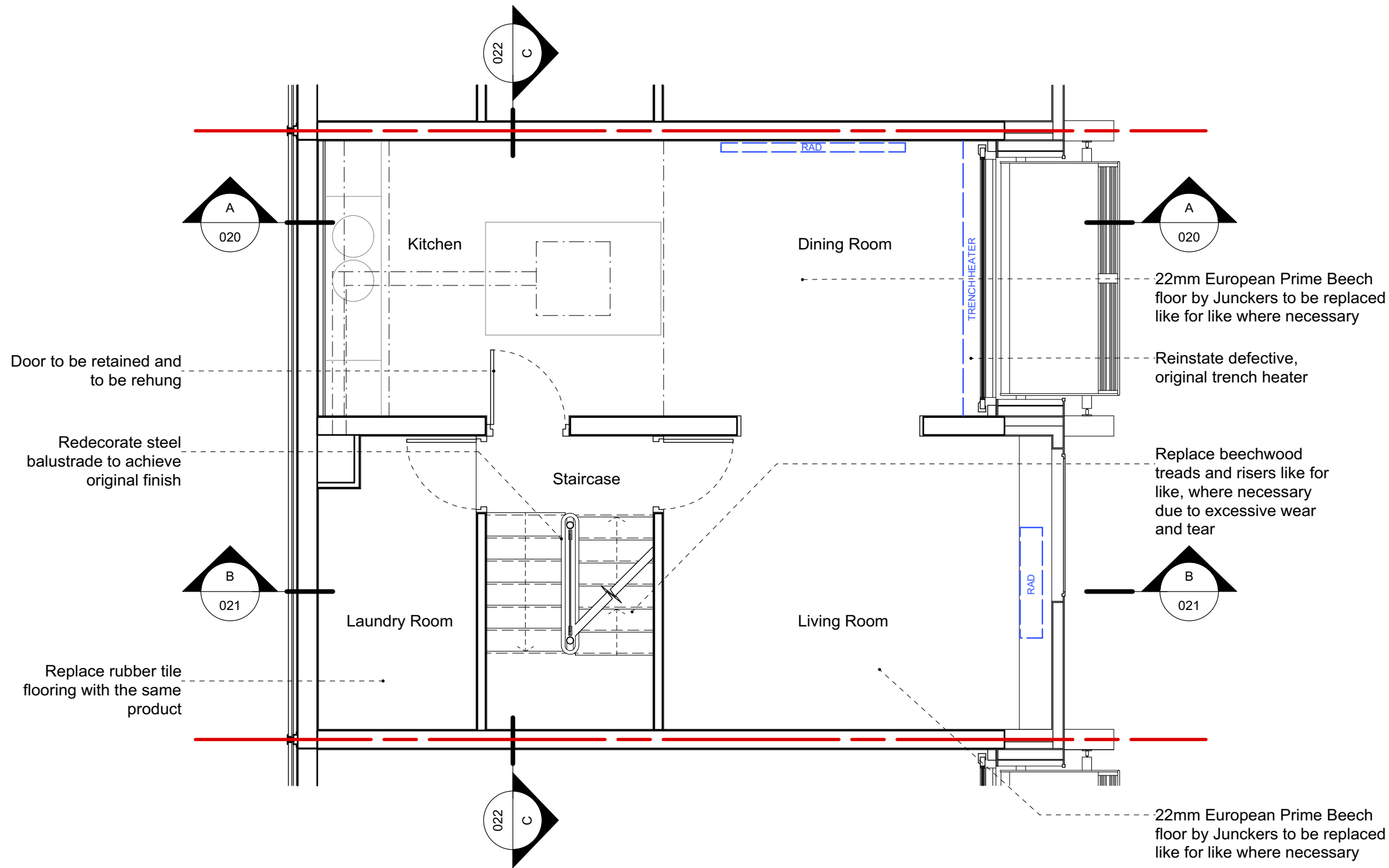
10 Grand Union Walk
 Proposed
 Ground Floor Plan
 1:50@A3 Jan 2020
 Drawn: TS Checked: TS
GUW10-P010(B)

General note:
 Replace all face fixed pipework and wiring with pipework and wiring concealed in walls and floors, as per the original design;
 tidy and clean up interior to re-instate original high-tech appearance where possible

General Notes
 Do not scale from this drawing
 All dimensions to be verified on site
 To be read in conjunction with all relevant documents
 In the event of discrepancy notify the Architect immediately
 This document is copyright of Hugh Cullum Architects Ltd

Issue Status

SK	Sketch	E	Existing Condition
D	Design	P	Permissions
T	Tender	C	Contract



22mm European Prime Beech floor by Junckers to be replaced like for like where necessary

Reinstate defective, original trench heater

Replace beechwood treads and risers like for like, where necessary due to excessive wear and tear

22mm European Prime Beech floor by Junckers to be replaced like for like where necessary

(B): Annotations revised; balustrade layout shown	29.06.20 /TS/TS)
(A): Annotations and kitchen layout revised	12.05.20 /TS/TS)
(): Revision Information	10.01.20 /TS/TS)



Proposed First Floor Plan

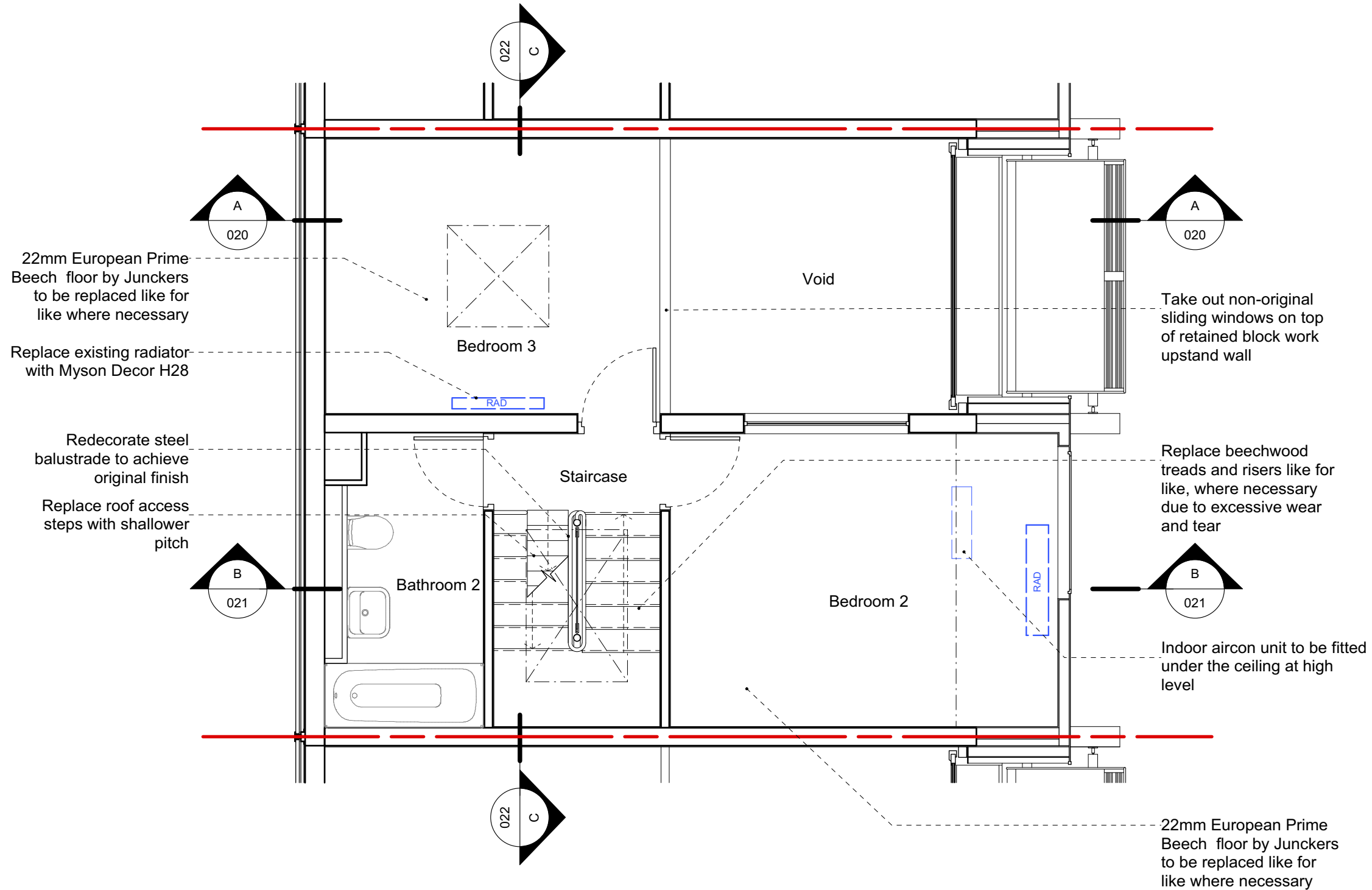
HUGH CULLUM ARCHITECTS LTD
 Bloomsbury Design
 61b Judd Street
 London WC1H 9QT
 t 020 7383 7647
 f 020 7387 7645
 mail@hughcullum.com

10 Grand Union Walk
 Proposed
 First Floor Plan
 1:50@A3 Jan 2020
 Drawn: TS Checked: TS
GUW10-P011(B)

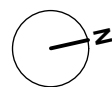
General note:
 Replace all face fixed pipework and wiring with pipework and wiring concealed in walls and floors, as per the original design;
 tidy and clean up interior to re-instate original high-tech appearance where possible

General Notes
 Do not scale from this drawing
 All dimensions to be verified on site
 To be read in conjunction with all relevant documents
 In the event of discrepancy notify the Architect immediately
 This document is copyright of Hugh Cullum Architects Ltd

Issue Status
 SK Sketch E Existing Condition
 D Design P Permissions
 T Tender C Contract



(C): Bathroom layout and blockwork upstand retained; annotations revised; stair balustrade shown	29.06.20 /TS/TS
(B): Annotations revised; internal balcony removed	12.05.20 /TS/TS
(A): Additional aircon information	05.02.20 /TS/TS
(): Issued for Planning	10.01.20 /TS/TS



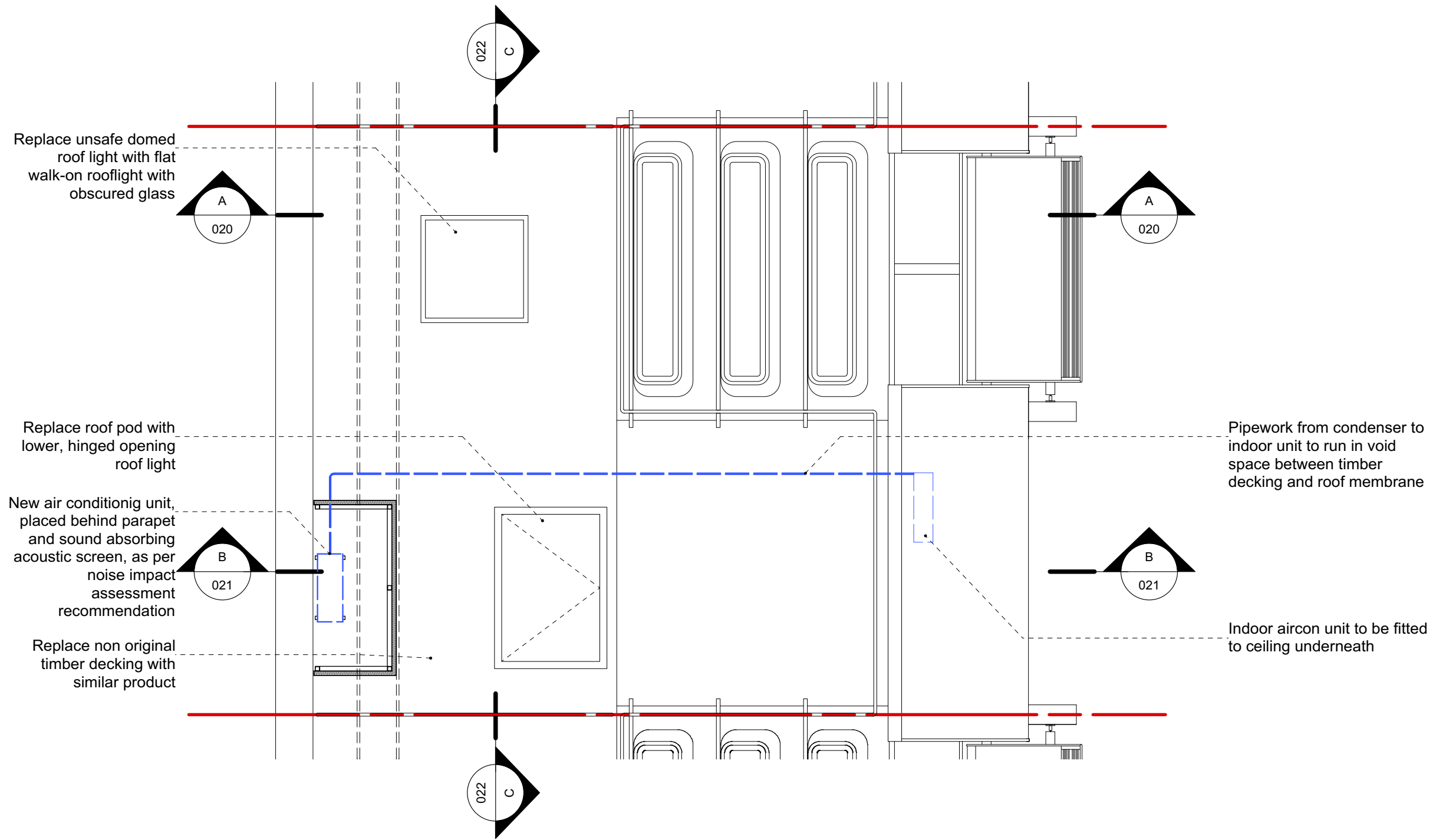
Proposed Second Floor Plan

HUGH CULLUM ARCHITECTS LTD
 Bloomsbury Design
 61b Judd Street
 London WC1H 9QT
 t 020 7383 7647
 f 020 7387 7645
 mail@hughcullum.com

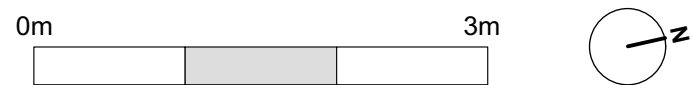
10 Grand Union Walk
 Proposed
 Second Floor Plan
 1:50@A3 Jan 2020
 Drawn: TS Checked: TS
GUW10-P012(C)

General Notes
 Do not scale from this drawing
 All dimensions to be verified on site
 To be read in conjunction with all relevant documents
 In the event of discrepancy notify the Architect immediately
 This document is copyright of Hugh Cullum Architects Ltd

Issue Status
 SK Sketch E Existing Condition
 D Design P Permissions
 T Tender C Contract



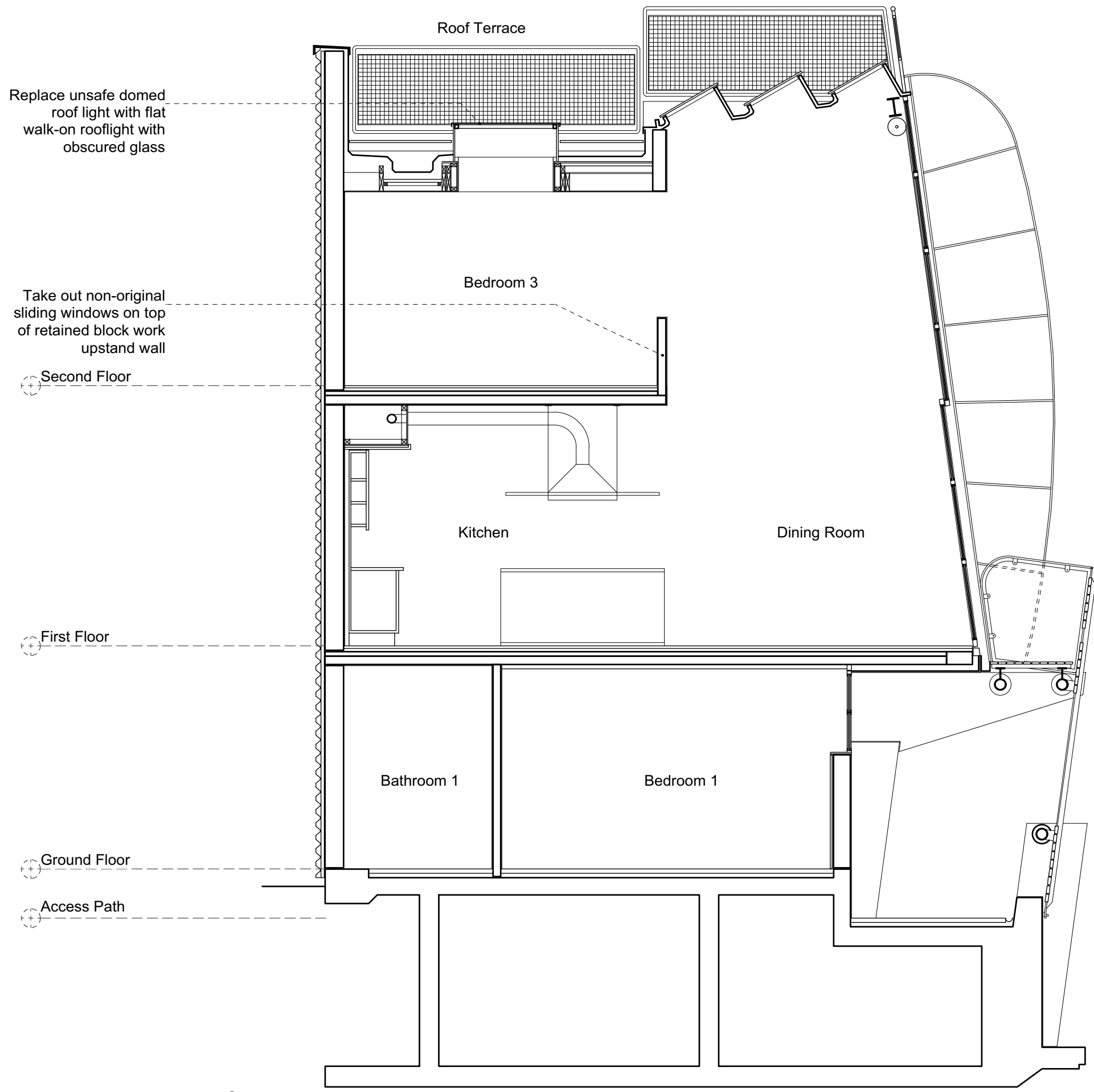
(A): Additional aircon information 05.02.20 /TS/TS
 (): Issued for Planning 10.01.20 /TS/TS



Proposed_Roof Plan

HUGH CULLUM ARCHITECTS LTD
 Bloomsbury Design
 61b Judd Street
 London WC1H 9QT
 t 020 7383 7647
 f 020 7387 7645
 mail@hughcullum.com

10 Grand Union Walk
 Proposed
 Roof Plan
 1:50@A3 Jan 2020
 Drawn: TS Checked: TS
GUW10-P013(A)



Replace unsafe domed roof light with flat walk-on rooflight with obscured glass

Take out non-original sliding windows on top of retained block work upstand wall

Second Floor

First Floor

Ground Floor

Access Path



Proposed_Section A-A

General Notes
 Do not scale from this drawing
 All dimensions to be verified on site
 To be read in conjunction with all relevant documents
 In the event of discrepancy notify the Architect immediately
 This document is copyright of Hugh Cullum Architects Ltd

Issue Status
 SK Sketch E Existing Condition
 D Design P Permissions
 T Tender C Contract

(B): Annotations revised; blockwork upstand retained 29.06.20 /TS/TS
 (A): Annotations and kitchen layout revised; internal balcony removed 12.05.20 /TS/TS
 (): Revision Information 10.01.20 /TS/TS

HUGH CULLUM ARCHITECTS LTD
 Bloomsbury Design
 61b Judd Street
 London WC1H 9QT
 t 020 7383 7647
 f 020 7387 7645
 mail@hughcullum.com

10 Grand Union Walk
 Proposed
 Section A-A
 1:50@A3 Jan 2020
 Drawn: TS Checked: TS
GUW10-P020(B)

New air conditioning unit, placed behind parapet and sound absorbing acoustic screen, as per noise impact assessment recommendation

Replace roof pod with lower, hinged opening roof light

New steel angle for stair balustrade support

Replace roof access steps with shallower pitch

Second Floor

Replace beechwood treads and risers like for like, where necessary due to excessive wear and tear

First Floor

Proposed access hatch into sub-basement for storage use

Ground Floor

Access Path

Roof Terrace

Bathroom 2

Bedroom 2

Laundry Room

Staircase

Living Room

Refuse/ Store/ Plantroom

Pipework from condenser to indoor unit to run in void space between timber decking and roof membrane

Indoor aircon unit at high level

General Notes

Do not scale from this drawing
All dimensions to be verified on site
To be read in conjunction with all relevant documents
In the event of discrepancy notify the Architect immediately
This document is copyright of Hugh Cullum Architects Ltd

Issue Status

SK	Sketch	E	Existing Condition
D	Design	P	Permissions
T	Tender	C	Contract

(C): Stair balustrade shown; annotations revised	29.06.20 /TS/TS
(B): Annotations revised; joinery unit in utility room added	12.05.20 /TS/TS
(A): Additional aircon information	05.02.20 /TS/TS
(): Revision Information	10.01.20 /TS/TS



Proposed_Section B-B

HUGH CULLUM ARCHITECTS LTD
Bloomsbury Design
61b Judd Street
London WC1H 9QT
t 020 7383 7647
f 020 7387 7645
mail@hughcullum.com

10 Grand Union Walk
Proposed
Section B-B
1:50@A3 Jan 2020
Drawn: TS Checked: TS
GUW10-P021(C)

Replace roof pod with lower, hinged opening roof light

New steel angle for stair balustrade support

Replace roof access steps with shallower pitch

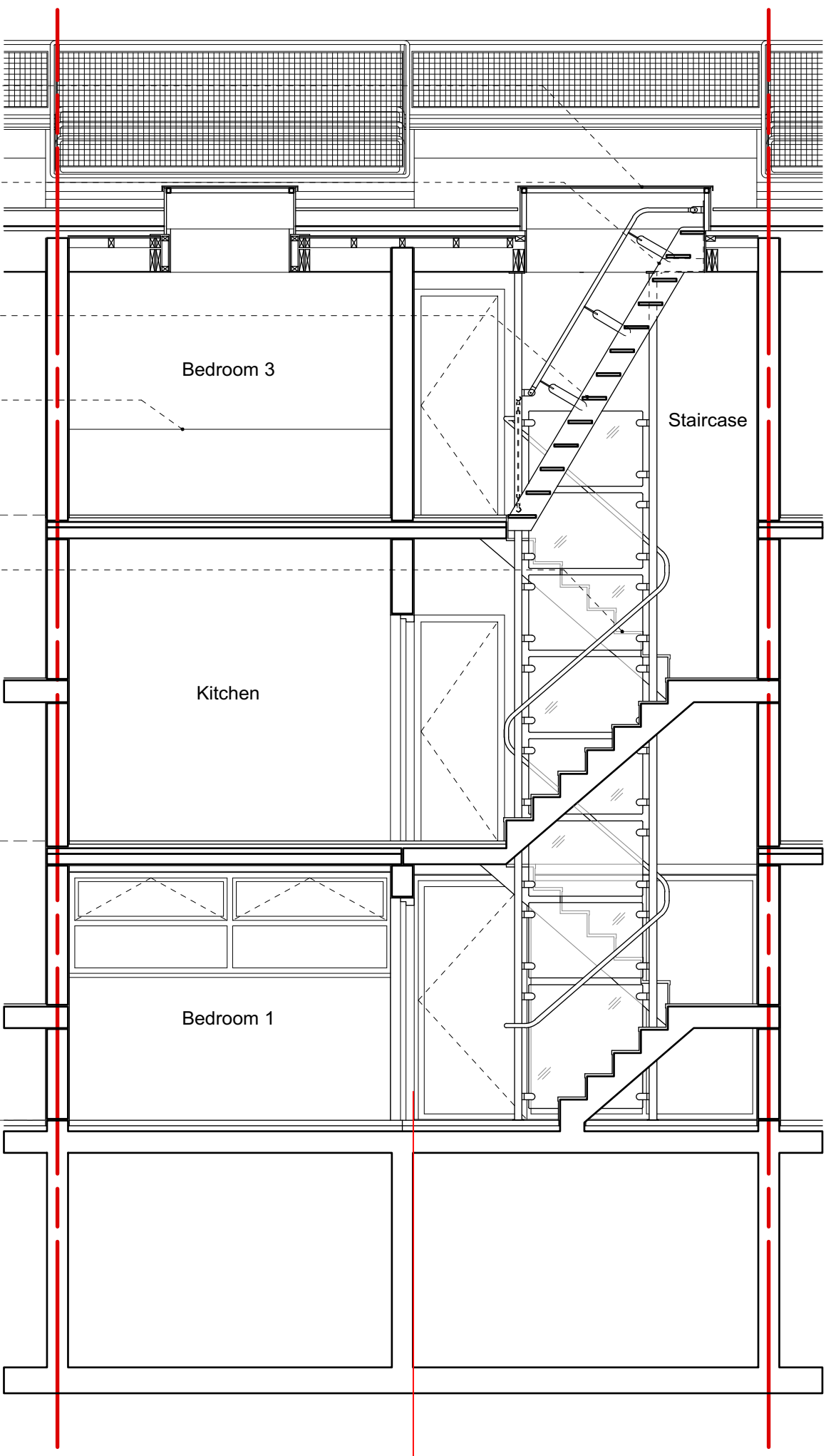
Take out non-original sliding windows on top of retained block work upstand wall

Second Floor

Replace beechwood treads and risers like for like, where necessary due to excessive wear and tear

First Floor

Ground Floor



General Notes
 Do not scale from this drawing
 All dimensions to be verified on site
 To be read in conjunction with all relevant documents
 In the event of discrepancy notify the Architect immediately
 This document is copyright of Hugh Cullum Architects Ltd

Issue Status
 SK Sketch E Existing Condition
 D Design P Permissions
 T Tender C Contract

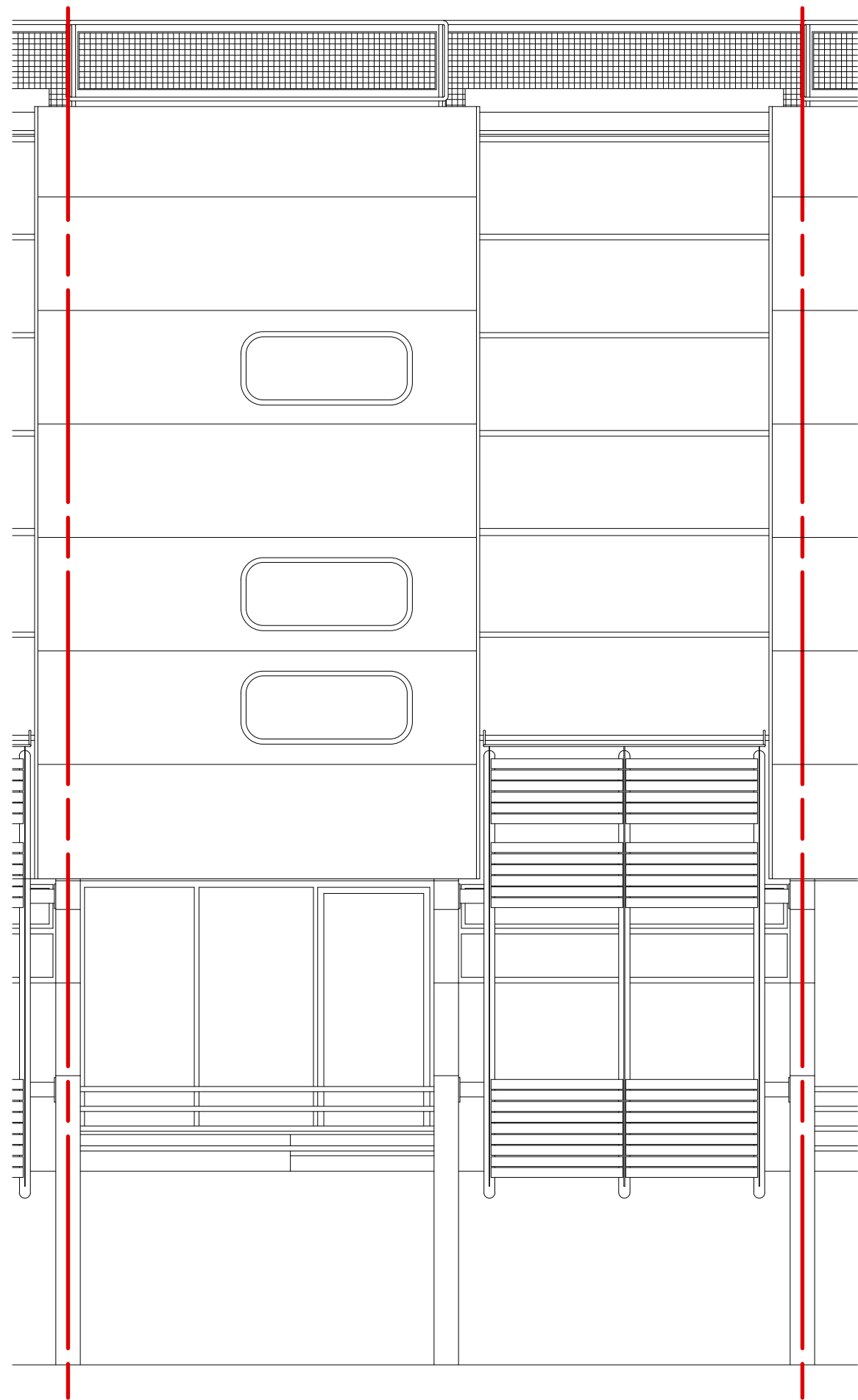
(B): Annotations revised; blockwork upstand retained; stair balustrade shown 29.06.20 /TS/TS
 (A): Annotations and balustrade revised 12.05.20 /TS/TS
 (): Revision Information 10.01.20 /TS/TS



Proposed_Section C-C

HUGH CULLUM ARCHITECTS LTD
 Bloomsbury Design
 61b Judd Street
 London WC1H 9QT
 t 020 7383 7647
 f 020 7387 7645
 mail@hughcullum.com

10 Grand Union Walk
 Proposed
 Section C-C
 1:50@A3 Jan 2020
 Drawn: TS Checked: TS
GUW10-P022(B)



Roof Terrace

Second Floor

First Floor

Ground Floor

Access Path



Proposed_North Elevation

General Notes
 Do not scale from this drawing
 All dimensions to be verified on site
 To be read in conjunction with all relevant documents
 In the event of discrepancy notify the Architect immediately
 This document is copyright of Hugh Cullum Architects Ltd

Issue Status
 SK Sketch E Existing Condition
 D Design P Permissions
 T Tender C Contract

(): Revision Information

10.01.20 /TS/TS)

HUGH CULLUM
 ARCHITECTS LTD
 Bloomsbury Design
 61b Judd Street
 London WC1H 9QT
 t 020 7383 7647
 f 020 7387 7645
 mail@hughcullum.com

10 Grand Union Walk
 Proposed
 North Elevation
 1:50@A3 Jan 2020
 Drawn: TS Checked: TS
GUW10-P030()

Outline of new air conditioning unit, placed behind parapet and sound absorbing acoustic screen, as per noise impact assessment recommendation

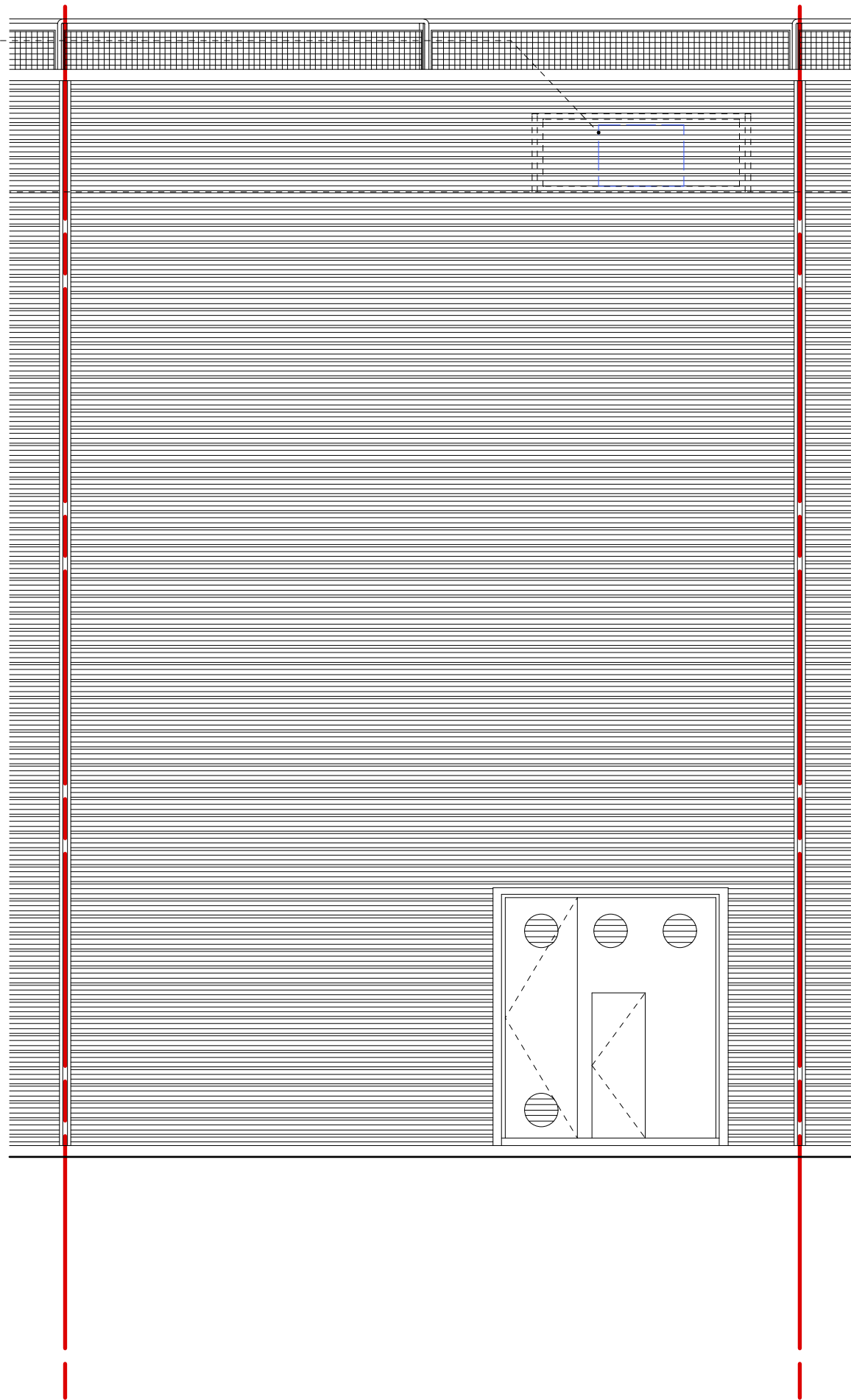
Roof Terrace

Second Floor

First Floor

Ground Floor

Access Path



General Notes
 Do not scale from this drawing
 All dimensions to be verified on site
 To be read in conjunction with all relevant documents
 In the event of discrepancy notify the Architect immediately
 This document is copyright of Hugh Cullum Architects Ltd

Issue Status
 SK Sketch E Existing Condition
 D Design P Permissions
 T Tender C Contract

(): Revision Information 10.01.20 /TS/TS)



Proposed_South Elevation

HUGH CULLUM ARCHITECTS LTD
 Bloomsbury Design
 61b Judd Street
 London WC1H 9QT
 t 020 7383 7647
 f 020 7387 7645
 mail@hughcullum.com

10 Grand Union Walk
 Proposed
 South Elevation
 1:50@A3 Jan 2020
 Drawn: TS Checked: TS
GUW10-P031()