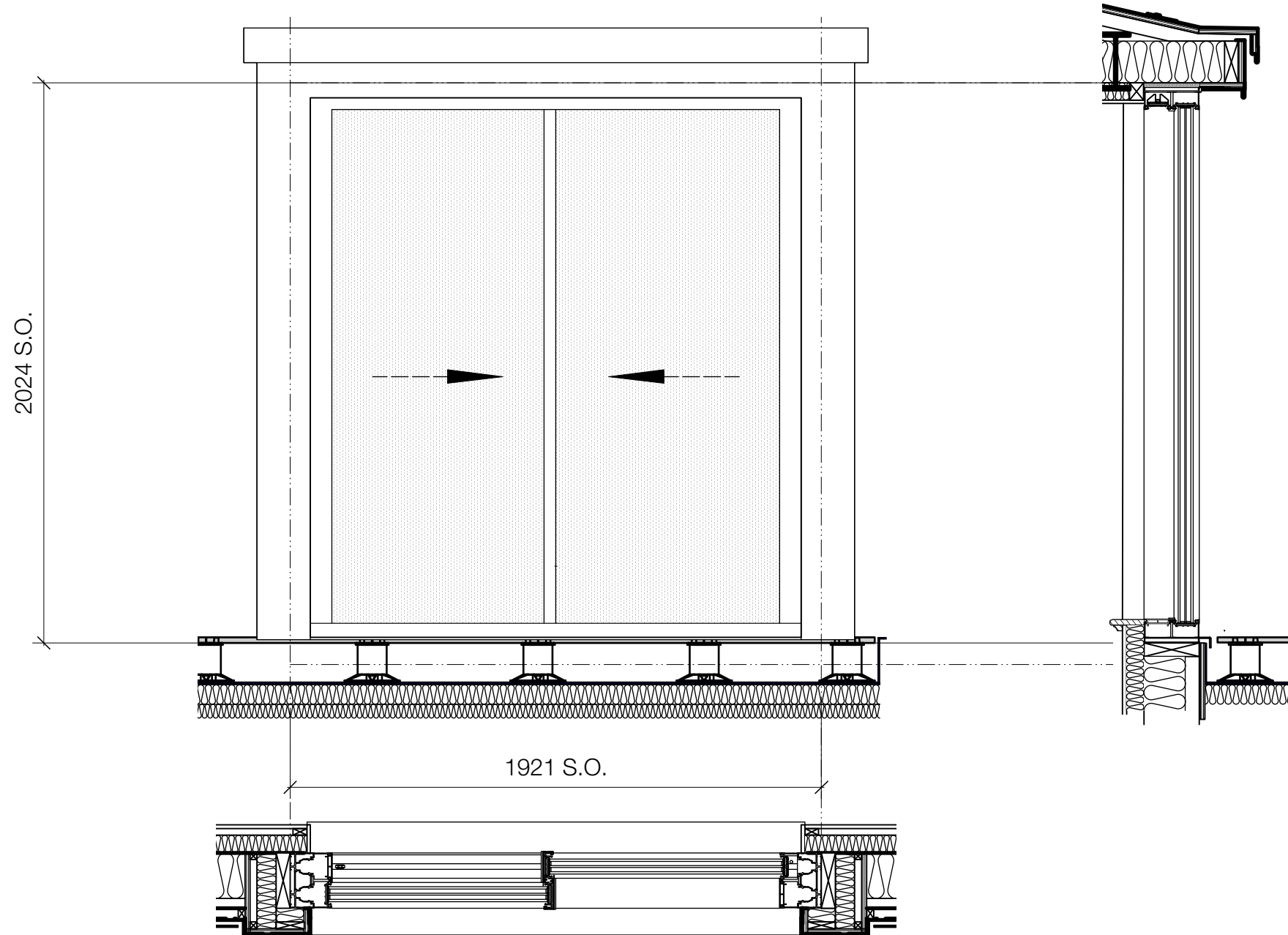


3 External Door Type 3
Flat doors

Double glazed polyester power coated aluminium sliding door.
 External colour TBC. Internal colour white.
 Door as NBS__
Min U-Value: 1.5W/m2K

Door type associated to Ironmongery Set 8



Window type applicable to: **D4-01**

GENERAL NOTES

- This drawing is the copyright of Haines Phillips Architects.
- Do not scale from this drawing. Use figured dimensions only.
- This drawing must not be used for land transfer purposes, or for construction purposes unless accompanied by an Architect's Instruction.

GENERAL NOTE:
 ALL DRAWINGS TO BE READ IN
 CONJUNCTION WITH DOOR
 SCHEDULE GA901

DRAWING ISSUE STATUS

ISSUE	STATUS	COMMENT
P	PRELIMINARY	For comment and review
PL	PLANNING	Planning/Listed Building Application
BR	BUILDING REGS	Building Regs Application
T	TENDER	For pricing purposes only
C	CONSTRUCTION	For procurement & construction
FC	FINAL CONSTRUCTION	Record drawings on completion
L	LEGAL	Conveyancing or other legal purposes

REVISIONS

REV	DATE	NOTES
P1	30/09/19	Application to discharge planning condition no.4

**HAINES
 PHILLIPS
 ARCHITECTS**

Tankerton Works
 12 Argyle Walk
 London WC1H 8HA
 t 020 7833 9324
 f 020 7837 2864
 e office@hainesphillips.co.uk

JOB TITLE

**9 Goodge Street,
 London W1T 2PE**
 DRAWING TITLE
External Door Types - Sheet 2

DRAWN	DATE	SCALE
CB	Feb 2018	1:10@A1
JOB NR	DRAWING - ISSUE - REVISION	
3931	DA402-P-1	