

Lighting Strategy Victoria House Heritage Areas



Table of Contents

1. Ground Floor Lift Lobby Approach	3
-------------------------------------	---

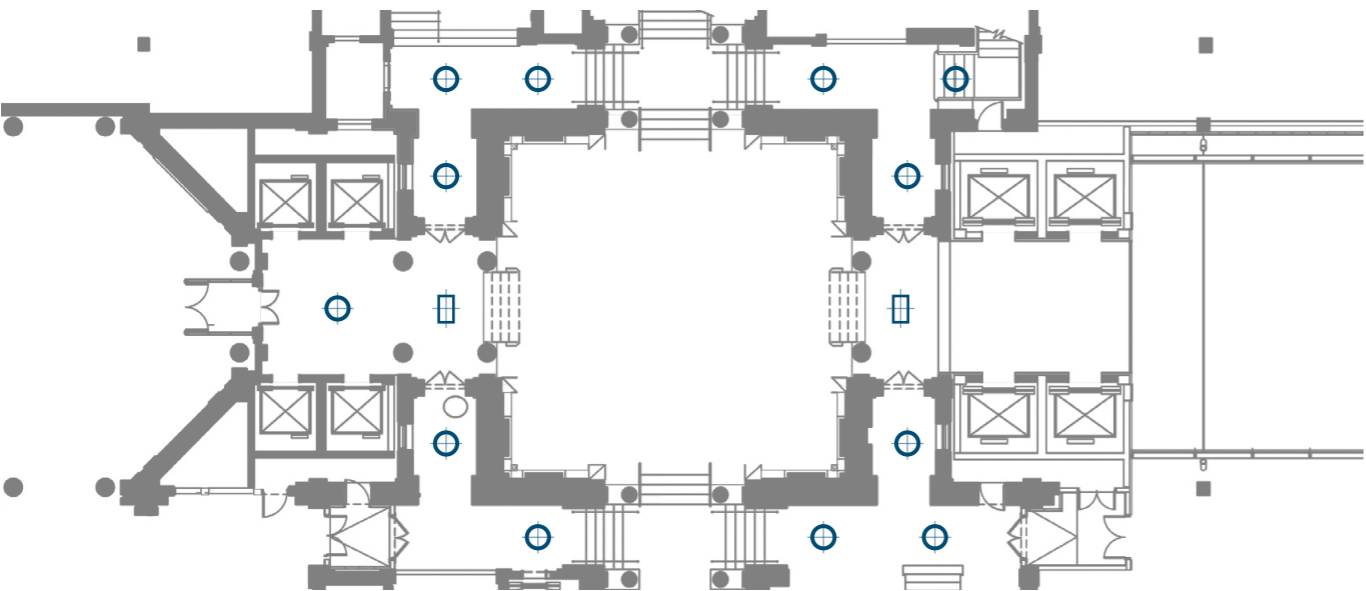
Issue Status: Heritage Planning Permission

Project Number: 0987

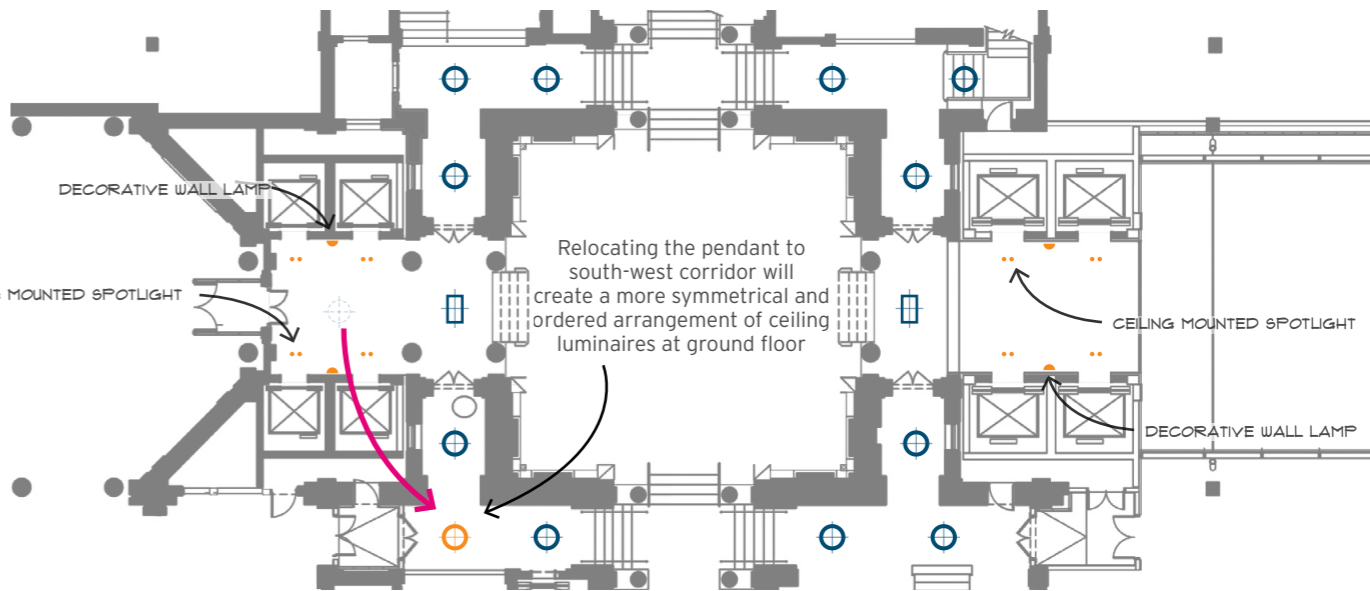
Date: 21/08/20

Client: LABS

1. Ground Floor Lift Lobby Approach



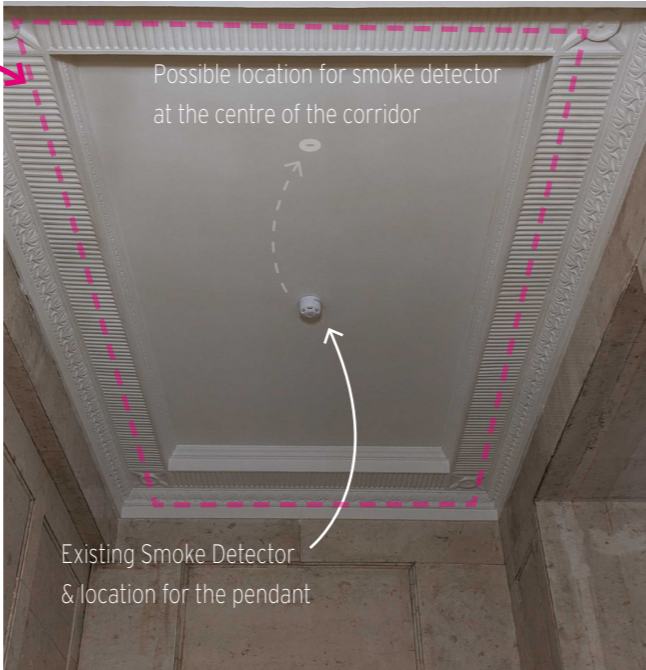
Current Ceiling Lighting layout



Proposed Ceiling Lighting layout



The pendant will be placed at its historic location improving the visual aesthetic of the corridor and creating a symmetry on both side of the circulation space. The Heritage luminaire will also help to improve the overall lighting level by providing soft ambient light to the corridor.



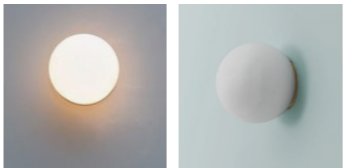
Existing ceiling smoke detector at the centre of the space where power could be taken to supply the heritage luminaire.

Additional work to the ceiling must be done in order to anchor the pendant at the middle of the soffit and at the same time to re-locate the smoke detector to centre of the hallway for safety purposes.

Proposed luminaires for lift lobby

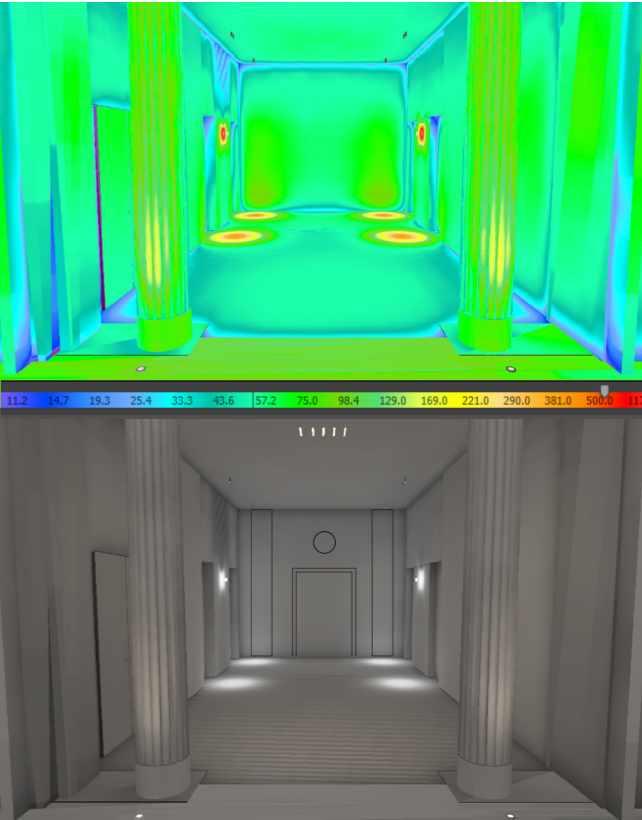


Description: Pair of ceiling spotlight in front each lift door.
- Location: North & South Ground Floor lift lobby
- Colour temperature: 2700K
- Wattage: 3.5W (310 lm)
- Beam Angle: 8 deg
Suggested Product:
Manufacturer: Reggiani
Product name: Yori surface Ø35mm - 0.FH51B.HWLO



New design to be approved
Description: Wall Mounted luminaire between lift door.
- Location: North & South Ground Floor lift lobby
- Colour temperature: 2000K-2800K
- Wattage: 11W (1000 lm) E14 Base
- Beam Angle: Diffuse
Suggested Product:
Manufacturer: Tala
Product name: Light Engine 1

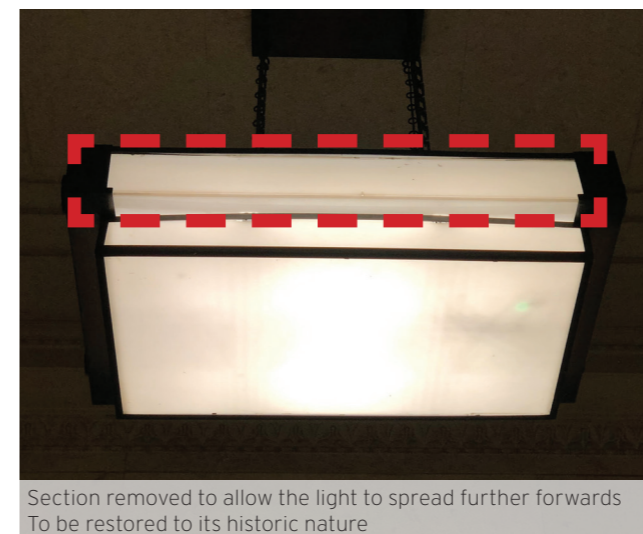
Lighting Calculations



1. Ground Floor Lift Lobby Approach



North Lift Lobby (Rectangular shape heritage pendant)



Section removed to allow the light to spread further forwards
To be restored to its historic nature



Rectangular Pendants North and South Ground Floor lift lobby

The existing heritage luminaires were initially refurbished were possible utilising modern LED light source in 2017. The new lighting scheme aim to improve/refurbish the historic luminaires in a general and minimal way focusing in the internal LED to provide a much better light quality to the space.

A simple and automated control system is proposed to ensure the lighting is set to the most efficient and effective levels throughout the day, giving the Central Hall further flexibility to create appropriate lighting scenes for the various functions that are held.

The front cast face of the metal frame has been cut away and a diffuser inserted, the removal of this section is crude and it has undermined the structural integrity of the fitting which accounts for the frame work appearing to be bent. This has been fitted with poor quality frosted acrylic. It is noted there are no safety cables fitted.

Improvements:

- A new cast section should be made to replace the section removed to restore the luminaire to its historic nature.
- The interior fixtures should be replaced with new 2700K LED striplights.
- The diffusers should be removed and fitted with a quality opal acrylic.

LIGHT BUREAU

Light Bureau Limited
7F Hewlett House
Havelock Terrace
London SW8 4AS
United Kingdom
Phone +44 (0)20 7498 6111
mail@lightbureau.com

Light Bureau
C/o AFRY
Lilleakerveien 8
0283 Oslo
Norway
Phone +47 454 78 101
mail@lightbureau.com

Please consider the environment before printing



© 2020 Light Bureau