

# LABS, Victoria House, Camden

Design & Access Statement: Ground Floor Lighting Amendments

August 2020



L A B S

HUTCHINSON & PARTNERS



Document Control:

Revision	Date	Notes	Initial
P01	21.08.2020	Issued for Planning	CL/JB

# Contents

01.00 Introduction	01
02.00 Design & Intervention: Lighting	03
03.00 Conclusion	15

01.00

# Introduction

01.01 Overview

02



# 01.01 Overview



Image of the Current Site from Bloomsbury Square

This document has been prepared by Hutchinson and Partners (the Architect) on behalf of LABS (the Applicant), in order to describe the design for the proposed refurbishment of the ground floors of their property, Victoria House at Bloomsbury Square, Camden, WC1B 4DA. The applicant (LABS) is outlining a proposal to relocate an existing light

within the norther lift lobby at ground floor level. This light is to be relocated to a corridor location within the passage that surrounds the Central Hall at the Upper Ground Floor Level.



Image of the Existing Building from Bloomsbury Square

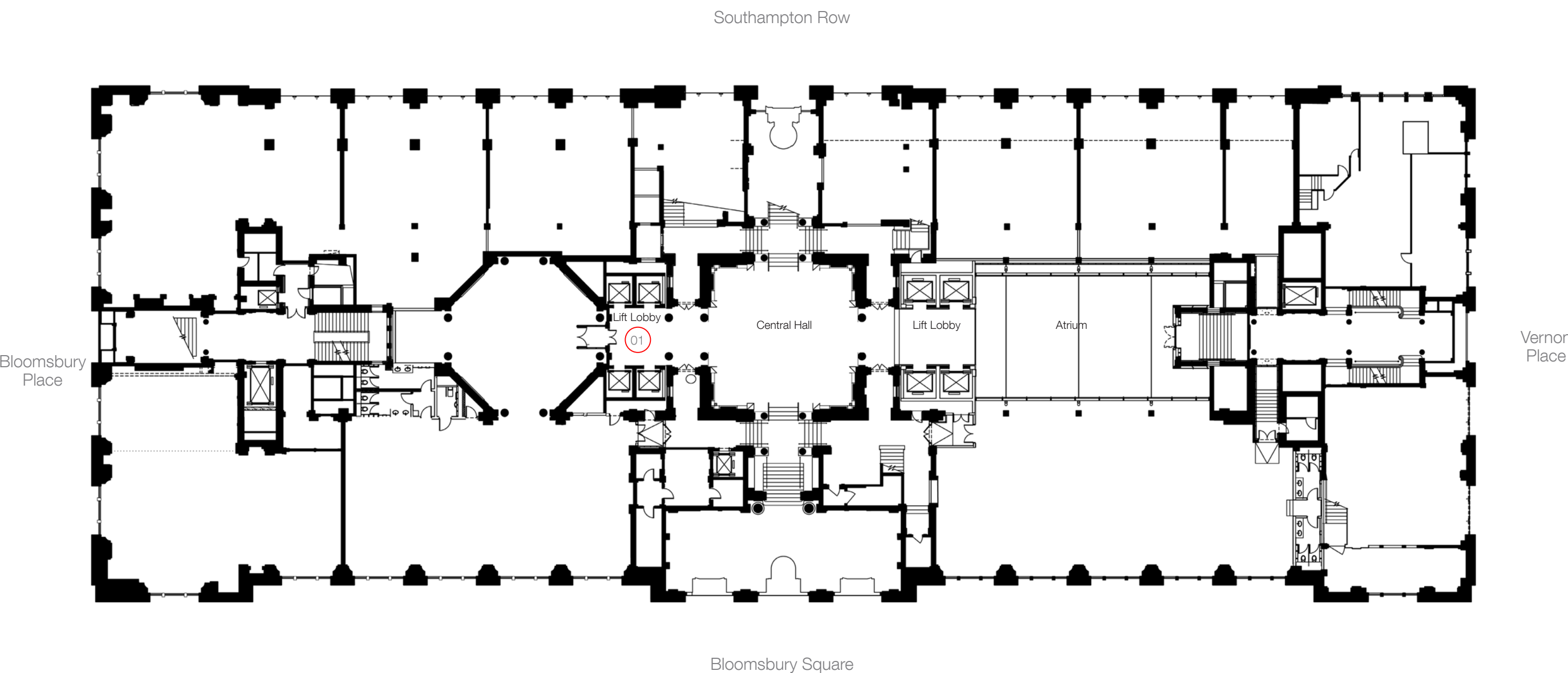


# 02.00

## Design & Intervention: Lighting

02.01 Existing Upper Ground Floor Layout	04
02.02 Existing Bowl Pendant Light In Northern Lift Lobby	05
02.03 Existing Northern Lift Lobby	06
02.04 Northern Lift Lobby	07
02.05 Northern Lift Lobby: Luminaires	08
02.06 Relocation of Existing Bowl Pendant Light	09
02.07 Section of Corridor with Existing Pendant Lights	10
02.08 Corridor with Existing Pendant Lights	11
02.09 Section of Corridor with Existing & Relocated Pendant Light	12
02.10 Proposed Power Connection To Pendant	13
02.11 Relocation of Bowl Pendant Light from Northern Lift Lobby	14

# 02.01 Existing Upper Ground Floor Layout



Existing Upper Ground Floor Plan

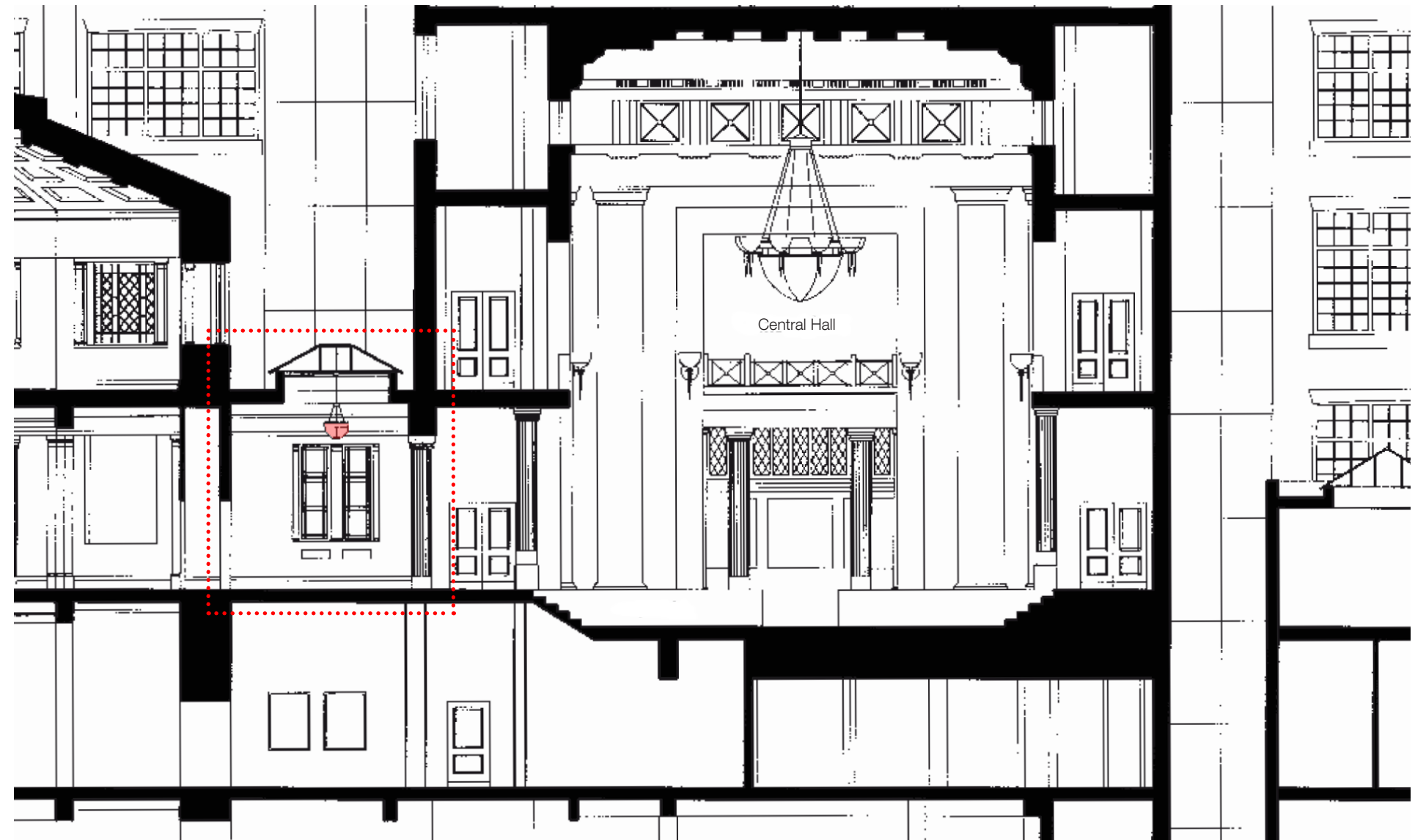
The light in question is an existing bowl pendant that is set within the northern lift lobby at the Upper Ground Floor Level. The spaces are being refurbished in line with the proposals previously permitted by Listed Building Consent Ref: 2020/2896/L.

01 Existing Bowl Pendant at Northern Lift Lobby

# 02.02 Existing Bowl Pendant Light In Northern Lift Lobby



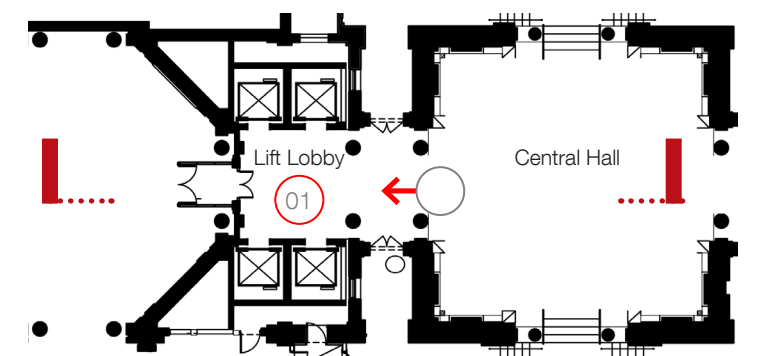
01: Existing photograph of Bowl Pendant at Northern Lift Lobby



Existing Section Taken from the 2003 Application

The light in question appears to be of the historic appearance, albeit that it may not be original. However, it is located on a newly designed ceiling and lift lobbies that was introduced during the 2003 refurbishment. As can be seen in the section above, the light, prior to the 2003 refurbishment, was originally located at a higher level within the historic space. In its new lower location, it now obscures the view

of the brass clockface that is located on the wall behind it. Furthermore, the light used to sit within the taller area created by the previously removed rooflight. However, currently it sits at a very low height within the space and is at odds with the naturally generous proportions of the upper ground floor spaces.





## 02.03 Existing Northern Lift Lobby

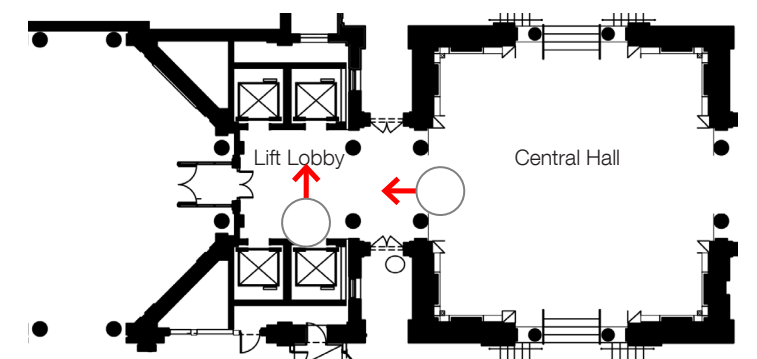


Visualisation of existing condition

The existing lift lobby is lined in polished plaster with a simple expression of the lift doors shrouded in a stainless steel surround. The floor is lined in a highly contrasting dark grey ceramic tile and low black skirting. The soffit of the space is a plasterboard ceiling that was introduced during the 2003 renovation of the building.



Visualisation of existing condition





## 02.04 Northern Lift Lobby



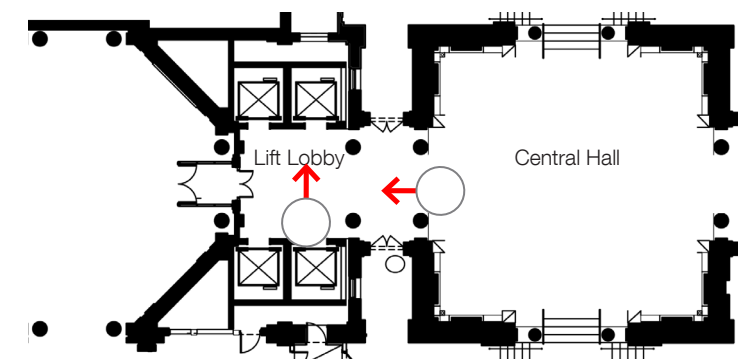
Proposed Visualisation

The recent consented lift lobby articulation (Ref: 2020/2896/L) is to be formed from jesmonite. The use of fluted panels to reference the inherent language of decoration within the historic elements of the building. The lift interface and signage is to be replaced, and the lighting updated to suit. The proportions of the lift openings are to be enhanced through the introduction of a portal feature that enhances the

verticality of the openings, and references the proportions of the historic doors to the passage that surrounds the Central Hall, and enhances their proportions in an elegant fashion.



Proposed Visualisation





# 02.05 Northern Lift Lobby: Luminaires



Image of Approved Surface Mounted Spotlight Luminaires



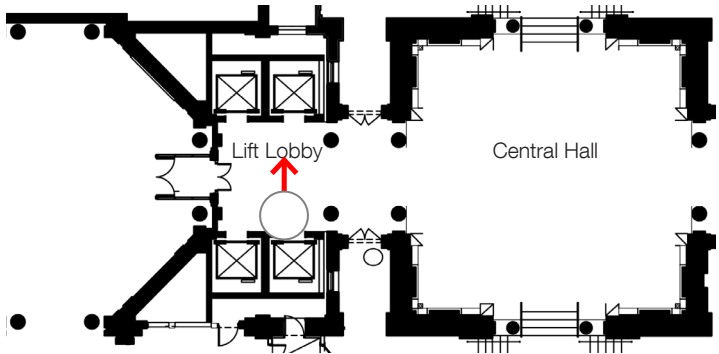
Image of Wall Mounted Globe Luminaire



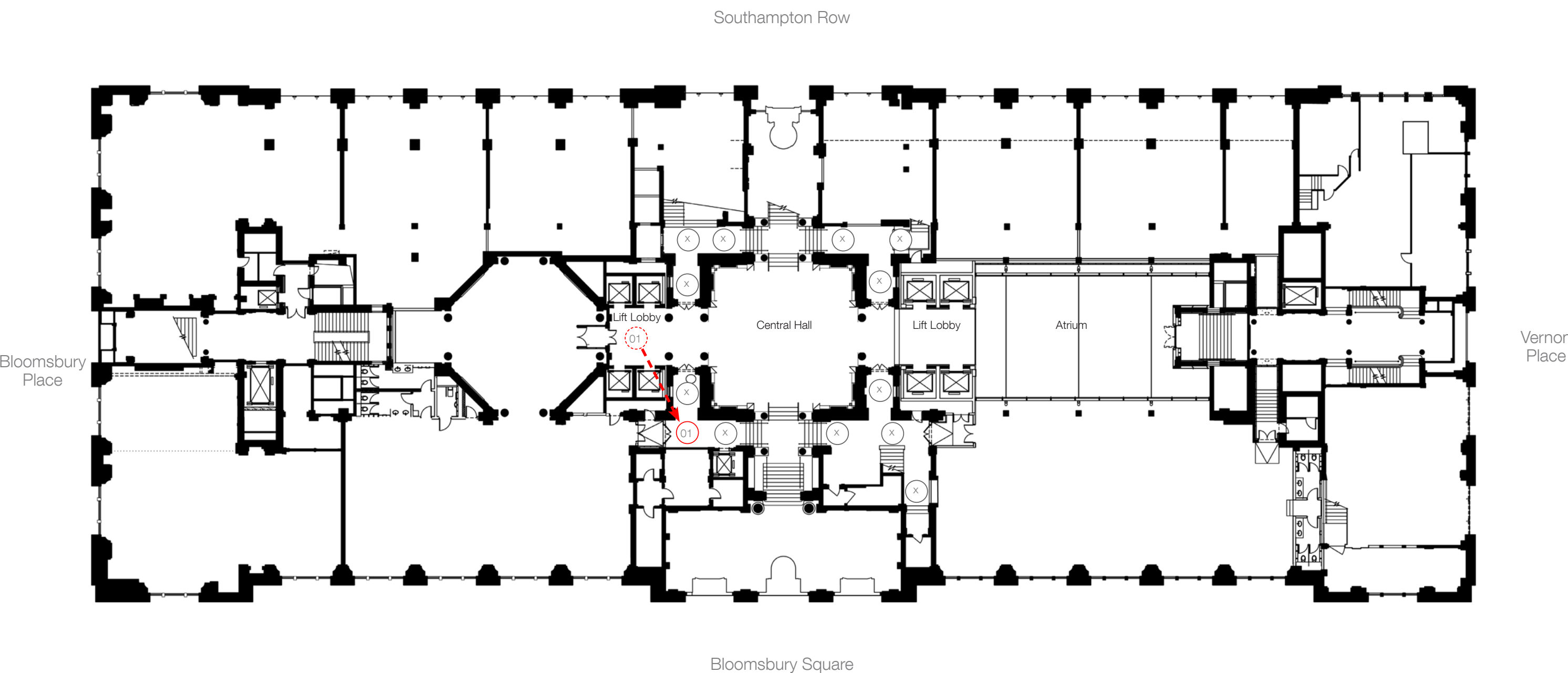
Proposed Visualisation

The recent approved design included the ceiling lighting which consists of a pair of surface mounted spotlight in front of each lift door. Combined with a newly introduction of one wall mounted globe luminaire adjacent to the lift door on each wall, this will improve the overall ambient lighting level of the lift lobby. The newly approved refurbishment of the ceiling will

rectify and repair over the existing anchor point following the relocation of bowl pendant.



# 02.06 Relocation of Existing Bowl Pendant Light



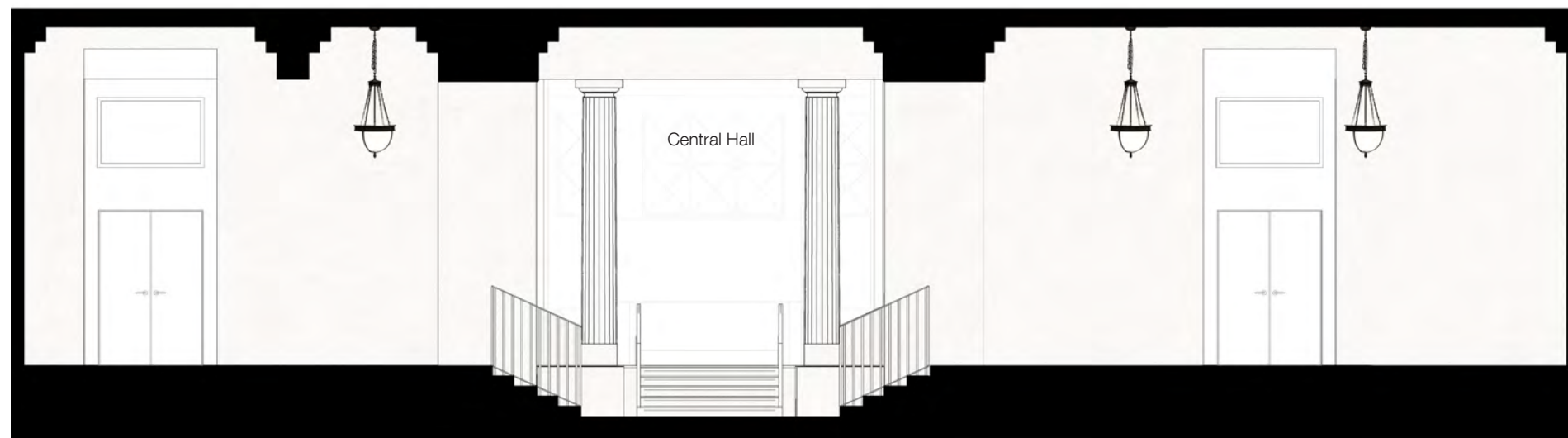
Existing Upper Ground Floor Plan

The proposal is to relocate the light into the corridor that surrounds the Central Hall. There are a number of identical pendants within this area. However, in every other corner there are three pendants. However, as there are currently only two pendants in the north west corner of the space, it is felt that the relocation would help to redress this balance.

- (X) Existing Surrounding Bowl Pendants
- (01) Proposed Relocation of Existing Bowl Pendant

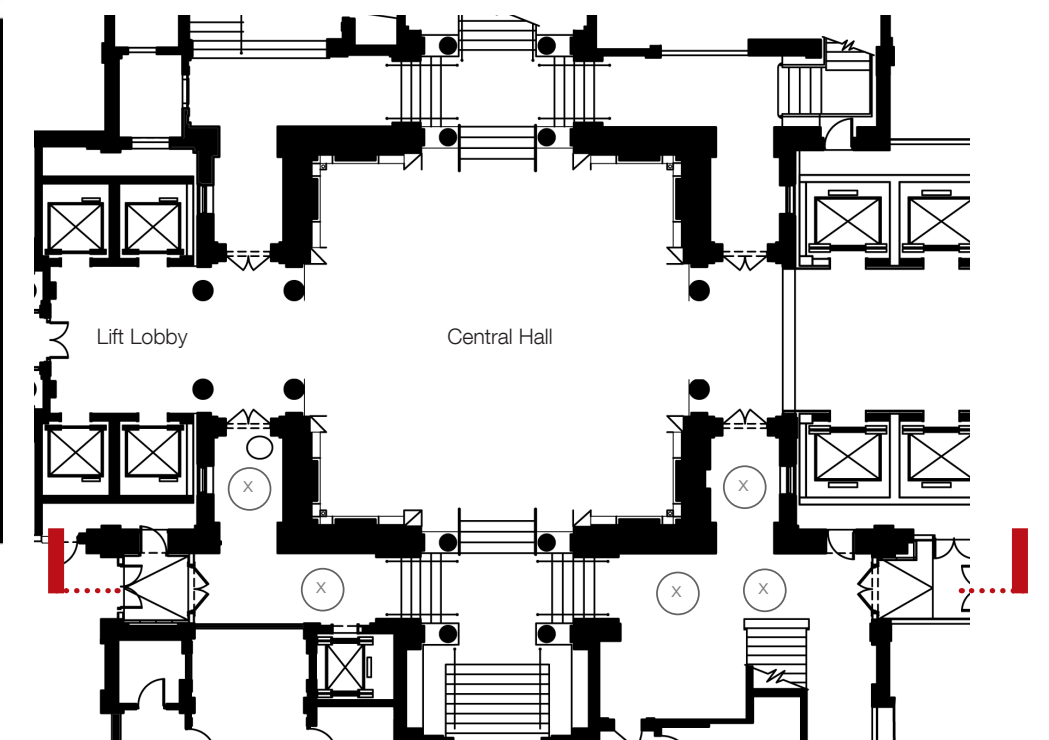


# 02.07 Section of Corridor with Existing Pendant Lights



Section of Existing Corridor

The section shows the unequal number of pendants within the corridor which does not relate to the strong symmetry that is inherent within this central space generally.



View Location Plan

(x) Existing Surrounding Bowl Pendants

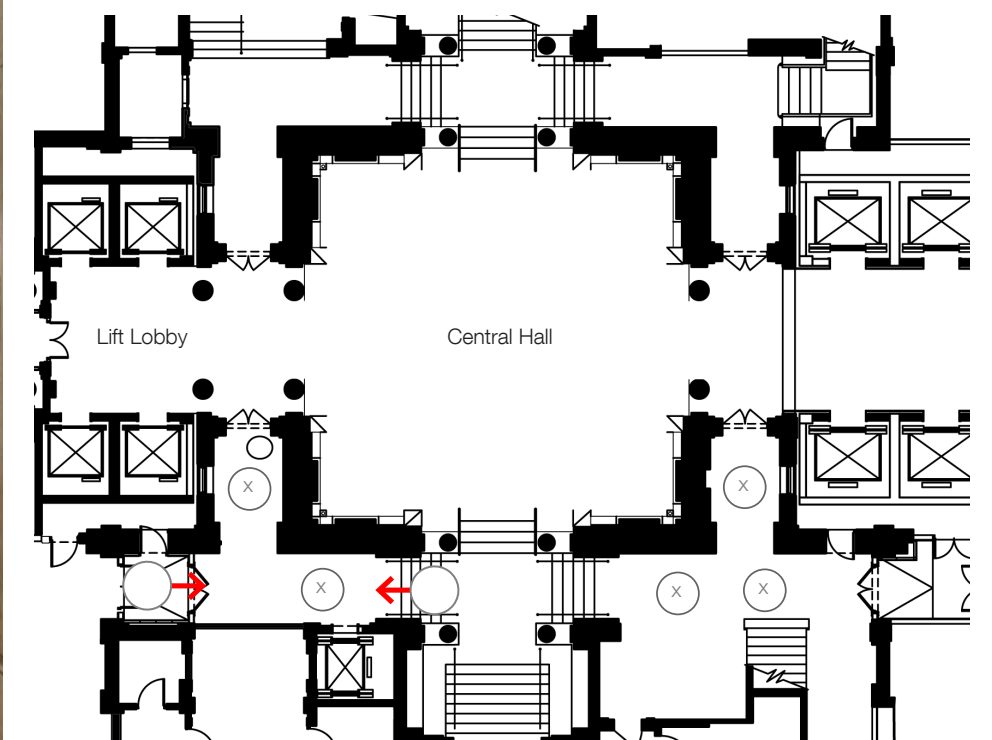
# 02.08 Corridor with Existing Pendant Lights



Photograph Looking North along Corridor



Photograph Looking South along Corridor



View Location Plan



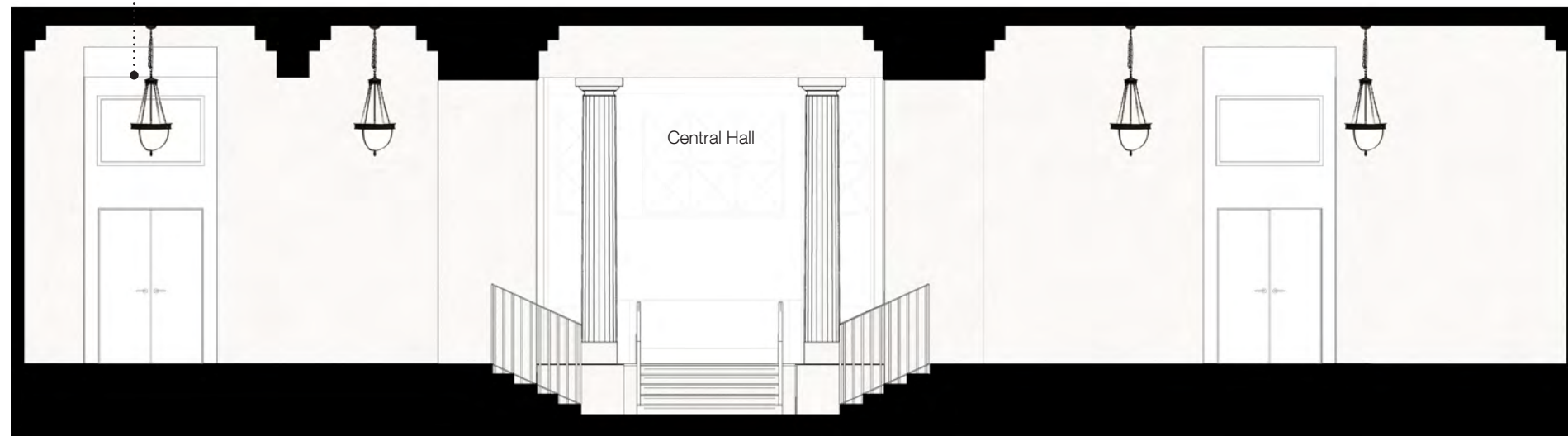
(X) Existing Surrounding Bowl Pendants

The above photographs show the location of the corridor into which the light is to be introduced. The first photograph looks north into the space, and we are only able to see a single light. However, if we look south, we see that the corridor on the other side of the stair has two lights. The relocated light will address this balance.



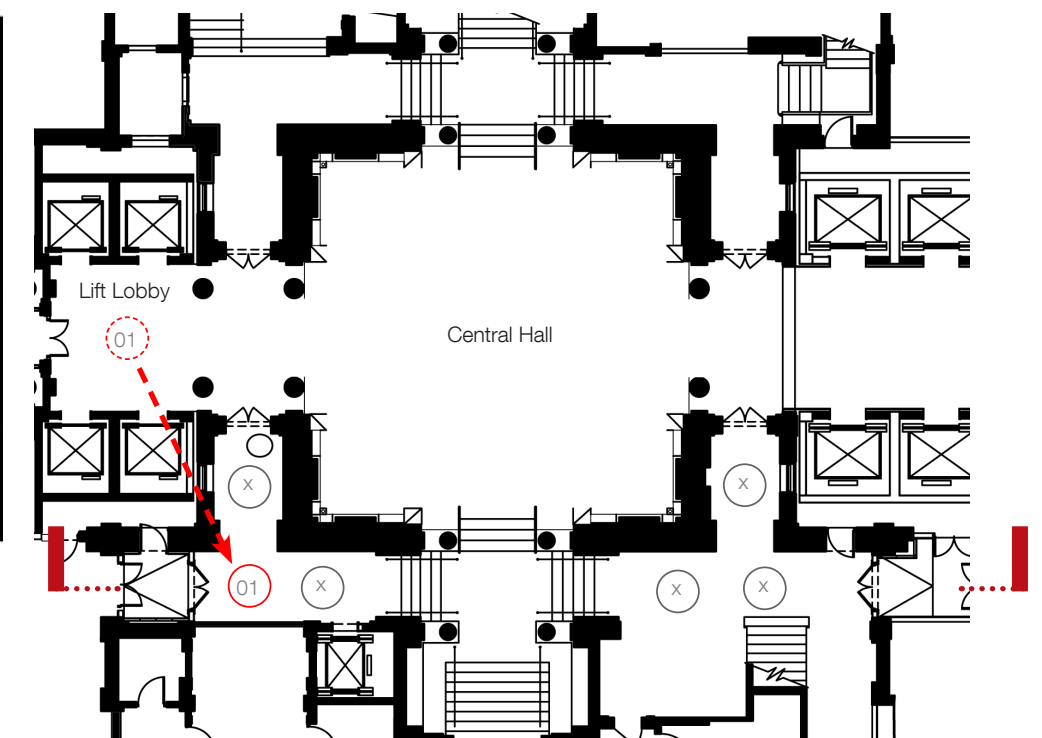
# 02.09 Section of Corridor with Existing & Relocated Pendant Light

Relocation of existing bowl pendant  
from Northern lift lobby



Section of Proposed Corridor

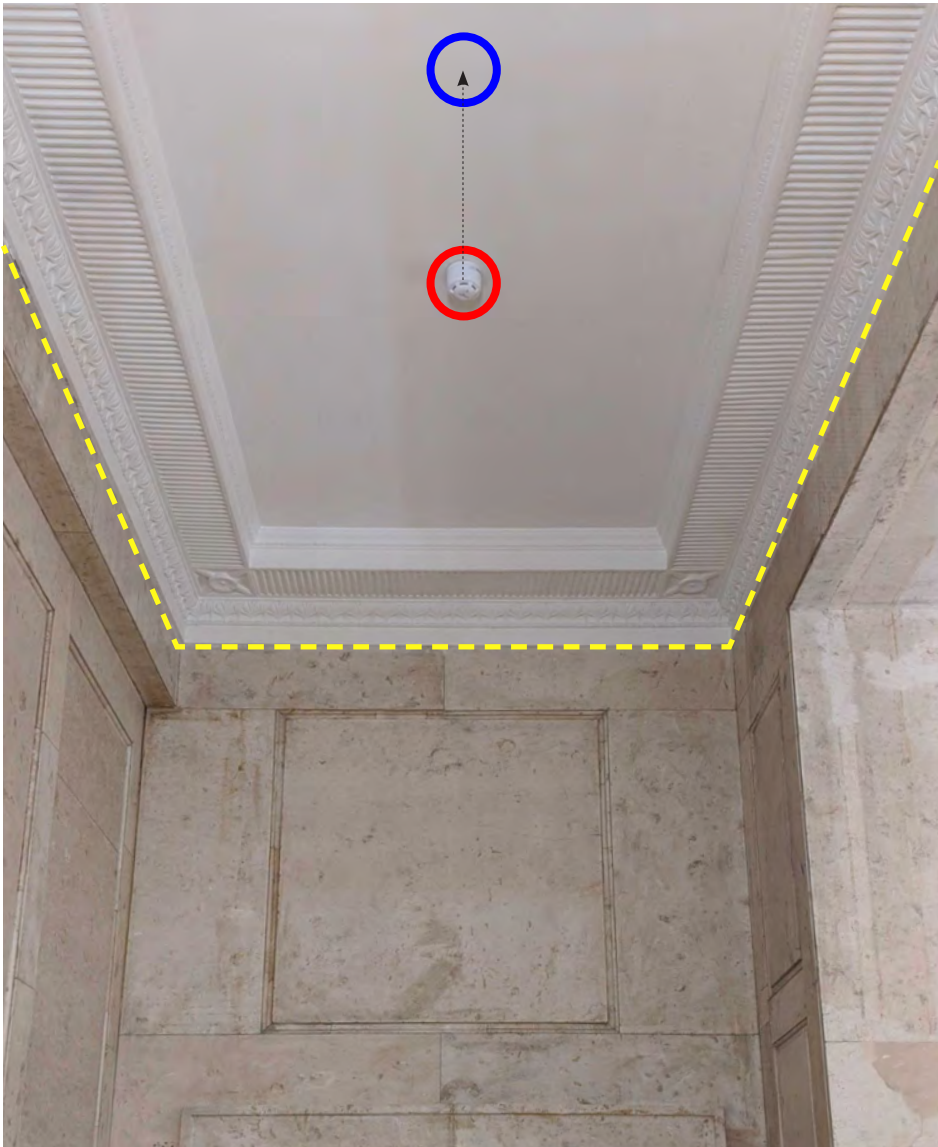
The proposed section shows the equal number of pendants on either side of the corridors by introducing the pendant from Northern lift lobby. This creates a sense of balance in which, the pendants also register the symmetrical of the columns leading towards Central Hall and beyond.



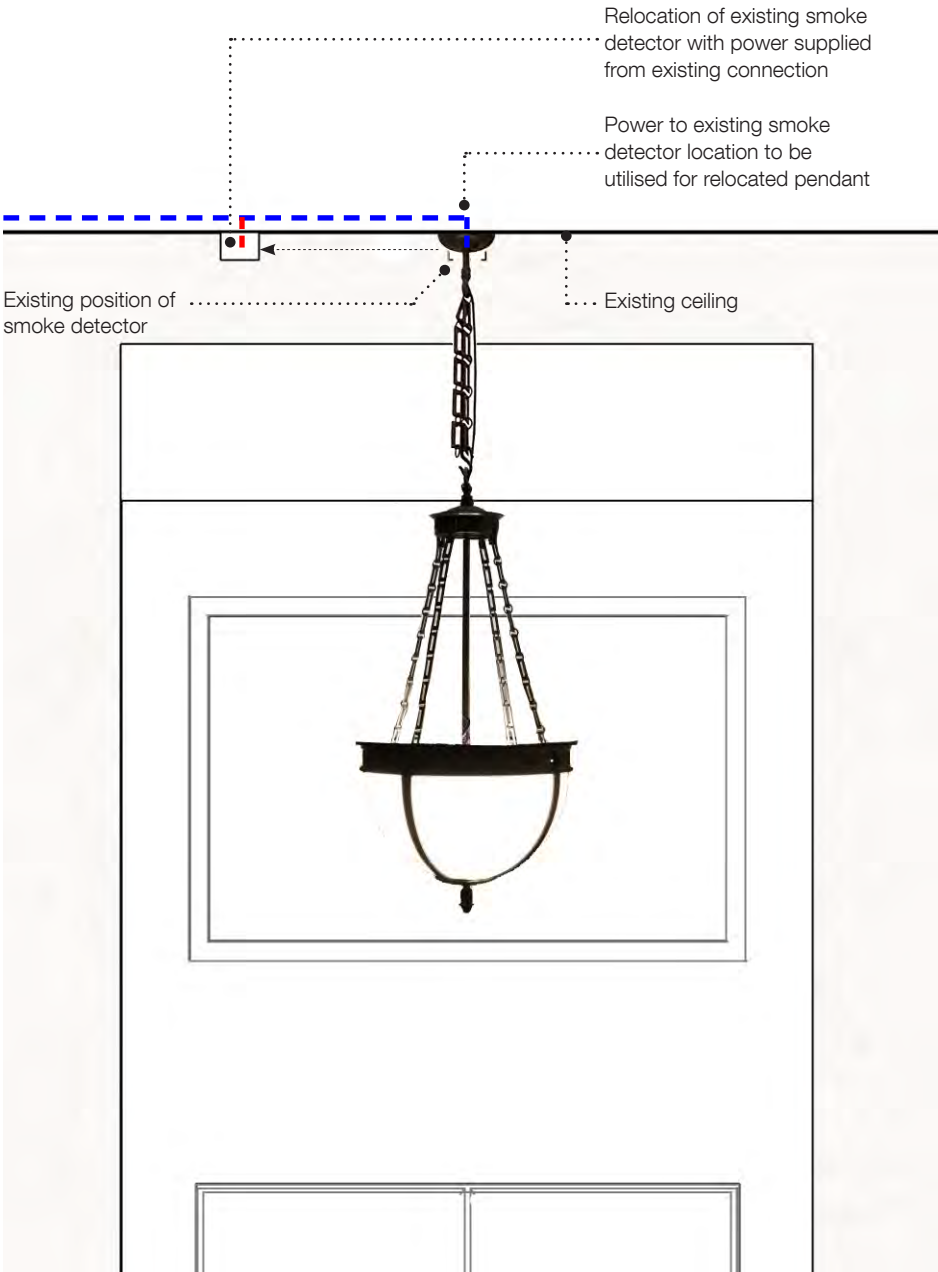
View Location Plan

- (X) Existing Surrounding Bowl Pendants
- (01) Relocation of Existing Bowl Pendant

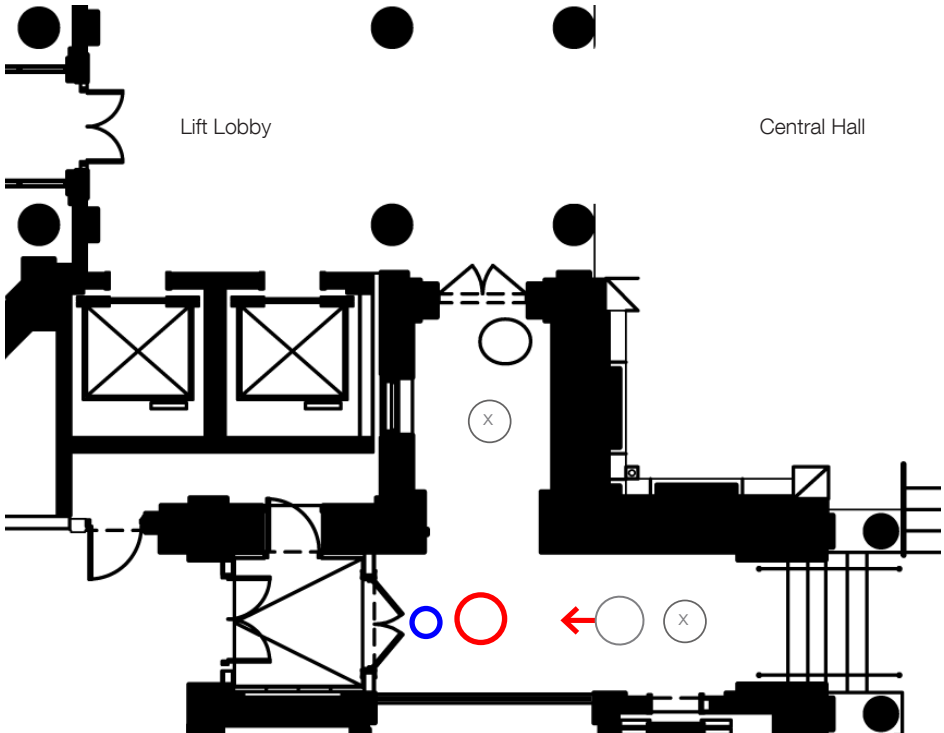
# 02.10 Proposed Power Connection To Pendant



Photograph Looking North along Corridor Ceiling Showing Existing Smoke Detector



Photograph Looking South along Corridor



View Location Plan

There is an existing smoke detector at the centre of the ceiling which the existing pendant will be relocated to. It is proposed that, the pendant will utilise power from the existing smoke detector. The smoke detector will be repositioned away from the pendant to avoid blinds spots and maintained coverage.

This will allow the pendant to sit centrally within the section of the ceiling in which it is proposed to be placed. As part of the overall heritage lighting refurbishment, the metal trays that support the light source will be repaired, the LEDs will be replaced, and a wireless dimmer will also be added.



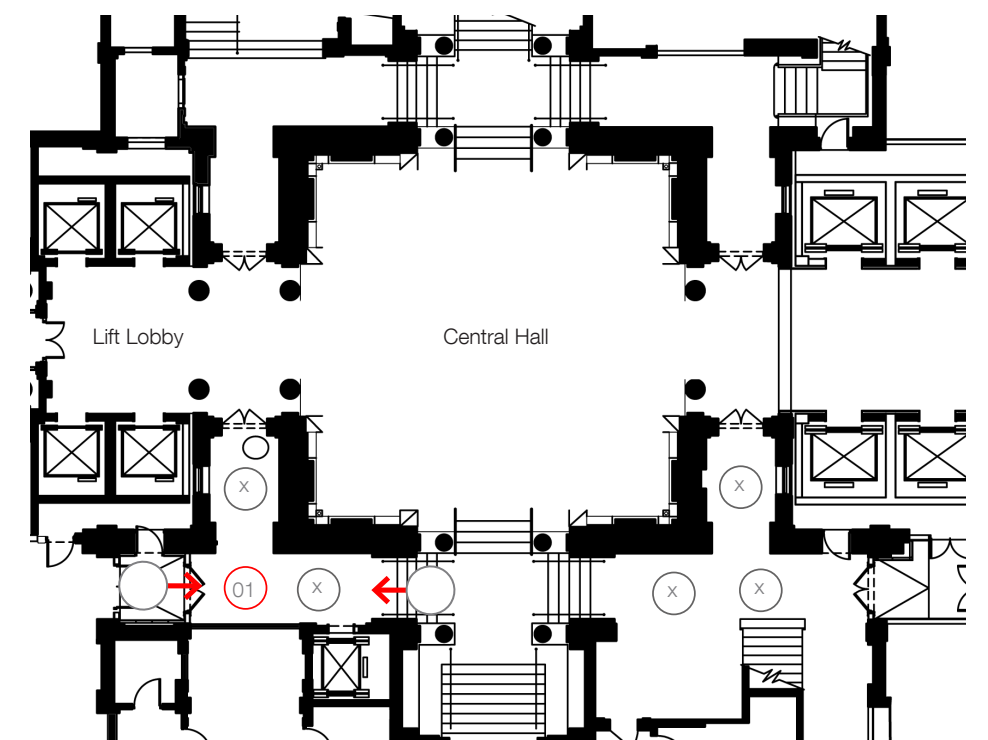
# 02.11 Relocation of Bowl Pendant Light from Northern Lift Lobby



Photograph Looking North along Corridor



Photograph Looking South along Corridor



View Location Plan

The relocation of the existing pendant from Northern lift lobby will be placed according to the historic layout of similar bowl pendants in the Ground Floor improving the visual aesthetic of the corridor and creating a symmetry on both side of the circulation space. The Heritage luminaire will also help to improve the overall lighting level by providing soft ambient light to the corridor.

- (x) Existing Surrounding Bowl Pendants
- (01) Relocation of Existing Bowl Pendant

# 03.00

## Conclusion

03.01 Summary of Proposal

16



# 03.01 Summary of Proposal



Image of the Existing Building from Bloomsbury Square

The proposal is for the relocation of one existing light to the ground floor of Victoria House at Bloomsbury Square, Camden. The proposal is for the relocation of the light from the contemporary plasterboard of the northern lift lobby, that is currently proposed as a newly refurbished space, to the historic corridors adjacent to the space. The relocated light

would aesthetically fit the new space of the corridor better due to the historic nature of both the light and the corridor space. Furthermore, the taller proportions of the corridor space, and amendments to adjust the pendant height, would ensure that the light is presented in the most suitable manner, that is befitting of its historic appearance. New complimentary



CGI of the Proposed Space

lighting is proposed in its stead within the Northern lift lobby to match that of the Southern lift lobby and ensure that there is a symmetrical relationship between the two spaces.