

51 FITZROY PARK

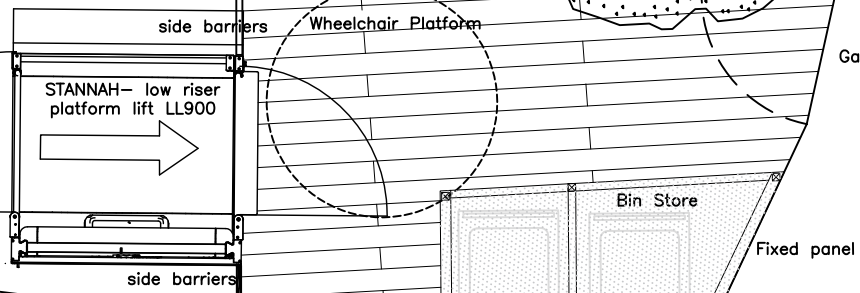
ASSUMED BOUNDARY LINE

existing panels to be extended as per agreement with no 51 FP, see section

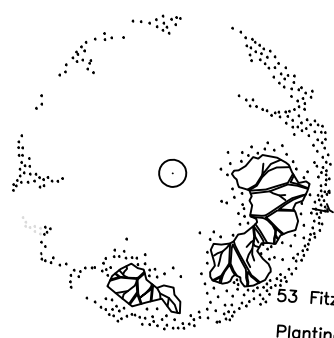
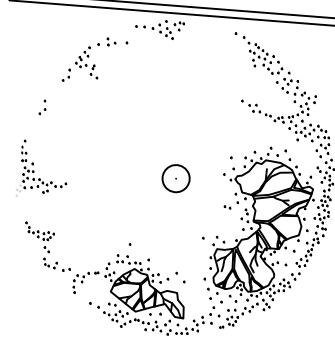
3rd, 2nd fence panel aligned with the existing 1st

WATER HOUSE

ASSUMED BOUNDARY LINE



FITZROY PARK



53 FITZROY PARK

53 Fitzroy Park Landscape
Planting as per drawings submitted to Discharge Planning Condition associated with the Planning Permission (subject to 106)

use taken from Planning drawings

General notes:
This drawing is copyright of KSR architects. This drawing must be read in conjunction with the Designer's Risk Assessment, specification and all other relevant documentation and drawings.
KSR architects accept no liability for any expense, loss or damage of whatsoever nature and however arising from any variation made to this drawing or in the execution of the work to which it relates which has not been referred to them and their approval obtained.
Do not scale from this drawing or the digital data, only figured dimensions are to be used. For Planning refer to linear scale.
Check all dimensions on site prior to carrying out any works - advise any discrepancy

Notes/Legends

C	Further details added	18/08/2018	
B	Planning Application	28/08/19	
A	Planning Application	18/04/19	

Rev	Description	Date	Check
0	KSR Architects		

PLANNING

Key Plan

KSRARCHITECTS
KSR Architects LLP
14 Grosvenor Street
London W1R 0ND
t: +44 (0)20 7682 9000
www.ksrarchitects.com

Project: THE WATER HOUSE

Title: Proposed Plan - External Platform Lift

Date: 17/04/19	Drawn By: GP	Checked: RM
----------------	--------------	-------------

Project Ref: 17007	Drawing No: 17007-P007	Revision: C
--------------------	------------------------	-------------



Scale 1:25 @ A1