

Living Green Wall Spec

The green wall proposal is to buy from proven company with 90yo experience, mobilane

1. The firm = <https://mobilane.com/en/>
2. Product selection = LivePanel Outdoor
3. Plant selection = Bergenia Eroica (Ouverture) S-W-E

Please refer to various tech spec;

1. Panel-A4-Factsheet-LivePanel-UKweb
2. Panel-Installation-Manual-LivePanel-Outdoor
3. Panel-ArchitectmapLivePanelENGUK
4. Panel-Mobilane-Brochure-Building-Green-UK-LR-web-front

LivePanel®

Indoor and outdoor green wall system

LivePanel is the innovative green wall system developed by Mobilane. LivePanel sustainably adds a warm, living surface to any learning, working or living environment. The modular green wall system consists of green profiles which work as a water tank and interchangeable plant cassettes with slots holding the plants. LivePanel can be affixed to new or existing walls in indoor or outdoor environments. The various sizes and creative plant options make LivePanel a flexible, space-saving green wall system with an unlimited range of applications.



Bergenia Eroica (Ouverture) S-W-E

Evergreen glossy green leaves turning red and copper from autumn. Beautiful magenta pink flowers in the spring.

4. Facade Greening with climbers

The scheme proposed to grow plant climbers mixed with the sedum on the edges of west and rear elevation. Allowing to climbers to climb down the cable wires installed on the brick facade. A touch of greenery to soften the brick facade. The climbers are restricted to the west and rear elevations and limited to the first storey only. The cable wires are 20cm apart, thus the foliage will only cover 50% of facade walls. The climbers will grow on the wooden pergola too. The subtle greenery will contribute to the overall Biodiversity of the site. Bring a good balance of climbers and brick detailing, resulting in an appealing architectural design.

Benefits of Climbers

Climbing plants are a beautiful addition to any garden and provide depth and complexity to simple urban spaces. These vertical wall spaces can be brought to life and become biologically active and be of high aesthetic values. Climbers in natural conditions cling to vertical supports, often beginning their growth in deep shadow. For this very reason, climbing plants exhibit a large tolerance to habitat conditions, including unfavourable conditions prevalent in cities. The benefits of climbers are improving the appearance of surroundings, cleaning the air, exhibiting biofiltration capabilities, reducing noise and vibrations, increasing biodiversity and protecting façades.

Facade Greening

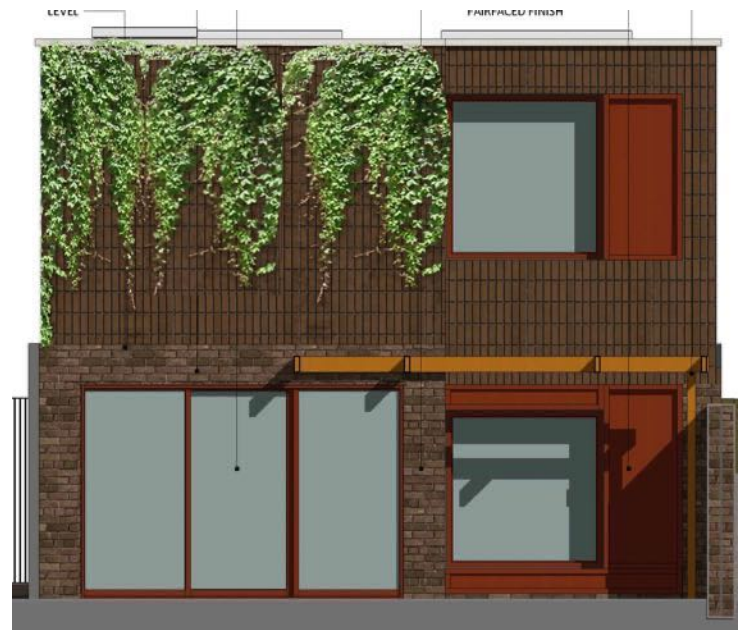
The façade greening method in the form of a vertical garden, whereby plants grow upwards from pots fastened to the facade or from a substrate on the roof. They do wonders for the local ecology. Densely built areas become a nicer place to work and live in. And they become prettier to look at. In addition, there is greater biodiversity, as plants and blossoms attract insects and birds which may even build their nests. Aesthetically, the variety of plants and the change of seasons replace the monotony of a naked facade by a change of colours and appearance. The facade of your building, partly or fully covered with plants, will be truly exclusive.



West Elevation with climbers, climbing down the cable wires

Climber Selection - Wisteria

Wisteria is probably one of the best-loved climbing plants. It is extremely versatile and can be trained against walls to form curtains of foliage and flowers or grown through pergolas where its pendant blooms can cascade overhead. It can even be trained to form impressive standards. This is a vigorous climber known for its beautiful cascades of perfumed flowers. The stems are twisted and wooded so will need to be supported by nails. They love the sun and flower in the spring.



Rear Elevation, the climbers will grow onto the pergola too.



Wisteria, in it's full beautiful glory, pleasing on the eyes



outdoor-terras-with-wisteria-pergola |

5. Installing Bird Boxes

The Importance of Bird Boxes

There are many bird house benefits, other than just giving visiting birds a place to roost. If you attract them to your yard by having bird friendly bird houses, and adding fresh clean water to the yard, the birds will help out in many ways in your garden. Bird Houses are often called nesting boxes because they provide a safe place for birds to build their nests, protected from the elements and predators. In the winter months, they give visiting birds a place to snuggle together for warmth away from the cold air.



Controlling pests. Since birds eat insects, they will help to eliminate unwanted pests in your yard and free you from needing to use otherwise harmful pesticides.

Weed control. Birds love to eat weed seeds. Gardeners do not like to weed. A Win win situation for all!

Flower pollination. There are many birds who love to sip nectar from flowers and help to pollinate. With the bee population diminishing, attracting birds who do this is sure to benefit your garden.

Conservation. Birds love native plants. If you grow these and then attract birds to your yard with bird friendly birdhouses, you will find that your gardening chores will diminish.

Property Values. A well maintained home with native landscaping that attracts birds has great curb appeal, which helps with property values.

Help with the housing shortage!

While it's true human resident of Camden faces an uphill battle to get onto the property ladder, consider a through for the local wildlife too. There are a lot of pressures on our native wildlife at present. New build houses are often impregnable to wildlife, lacking any gaps and crevices where animals may nest/roost which means that opportunities are reducing for many species. By doing something as putting up a box on your house or in your garden, can provide invaluable to our urban wildlife that is in desperate need of somewhere to live too.

The following Bird Boxes will be installed at Lidlington Place to attract wildlife to the site. A total of 12 Bird Boxes will be placed throughout the site suitable for certain types of bird. They will be installed on brick fence, on the green roof, on the facade wall and street trees. The scheme will do its part to promote the local wildlife and biodiversity.



1. [Schwegler 1B Nest Box](#)

- Made from: Woodcrete
- Entrance: 26mm, 32mm or Oval (29 x 55mm)
- Suitable for: 26mm – blue tits, coal tits, marsh tits, crested tits; 32mm – great tits, nuthatches, tree sparrows, house sparrows; Oval – redstart



2. [Traditional Wooden Bird Box](#)

- Made from: European redwood (FSC)
- Entrance: 25mm or 32mm
- Suitable for: 25mm – blue tits, coal tits, marsh tits, crested tits; 32mm – great tits, nuthatches, tree sparrows, house sparrows



7. [2GR Schwegler Nest Box](#)

- Made from: Woodcrete
- Entrance: Oval (30 x 45mm) or three hole (27mm)
- Suitable for: Oval – nuthatches, redstart, tree sparrows, house sparrows, pied flycatchers; Three hole – blue tits, marsh tits, great tits



8. [Tree Sparrow Nest Box](#)

- Made from: Exterior quality plywood (FSC)
- Entrance: 28mm
- Suitable for: Tree sparrows, great tits, blue tits, crested tits, pied flycatchers



9. [Robin and Wren FSC Nest Box](#)

- Made from: Softwood (FSC)
- Entrance: Open (80 x 60mm)
- Suitable for: Robins and wrens



10. [Starter Nest Box with 32mm Hole](#)

- Made from: Softwood (FSC)
- Entrance: 32mm
- Suitable for: Great tits, blue tits, house sparrows, nuthatches

Conclusion

With good architectural design and selected green initiatives, we have demonstrate that even a sad derelict site like Lidlington Place can be transform into a vibrant ilittle urban garden oasis. By installing bird boxes, greening the facade, greening the street, green roof and living green walls, these green initiatives will have a profound good on the biodiversity of the local area. All possible by having a first storey addition. Taking the amenities spaces to a higher dimension by filling the walls, fence, perloga, roof and street with beautiful foliage and colours, making the most of limited spaces while still contributing to the local ecosystem and biodiversity.