

APPENDIX F

Ground Investigation Results

Figure GI-01 Borehole & Trial Pit Location Plan

Oakland Site Investigation Ltd

- Windowless Sample Log – Borehole BH1
- Trial Pit Sketches – TP1 & TP2

Geolabs Ltd

Laboratory Test Results – (Ref: GEO/30889):

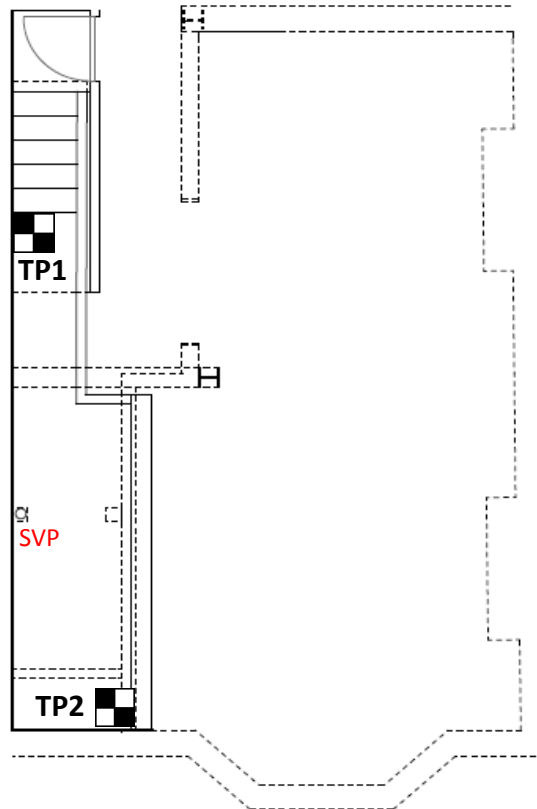
- Summary of Liquid & Plastic Limit Tests
- Summary of Chemical Tests on Soil

Project:

46 Agamemnon Road, London, NW6 1EN



GGC20807





Cellar Plan

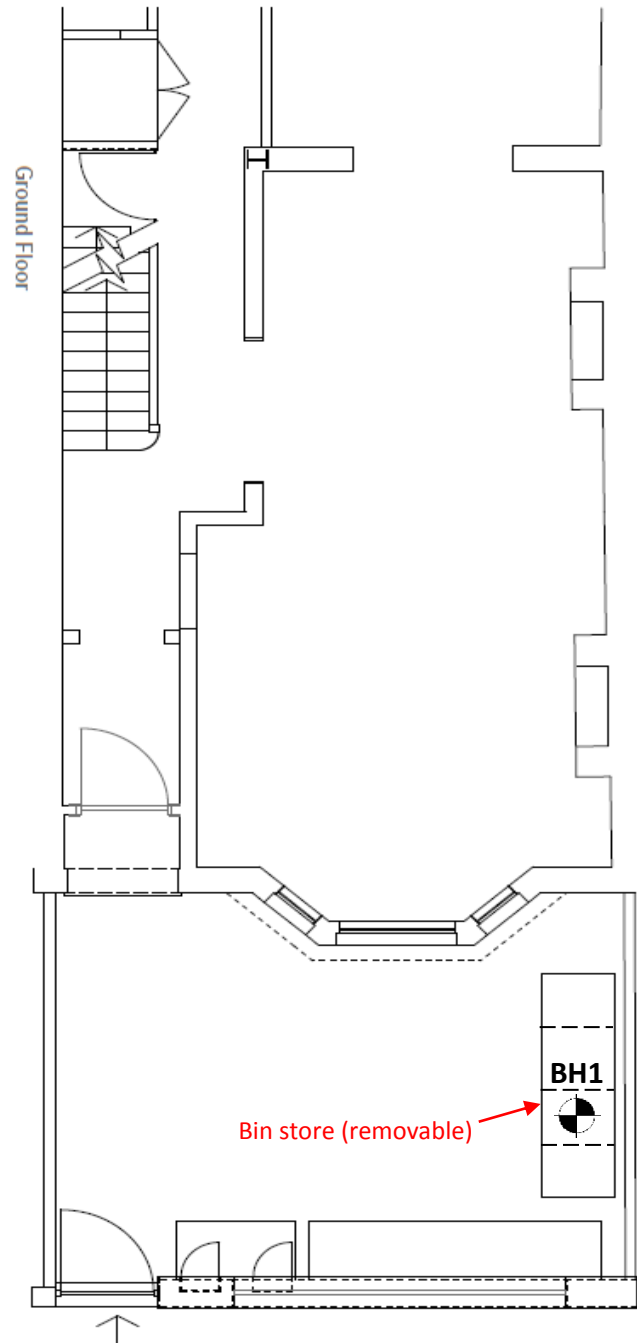
Notes:

1. BH1 installation is concealed under a paving slab.

Key:

 **BH1** Borehole location & number

 **TP1** Trial pit location & number



Agamemnon Road

Ground Floor Plan

Title: **Borehole and Trial Pit Location Plan**


Figure: **GI-01**

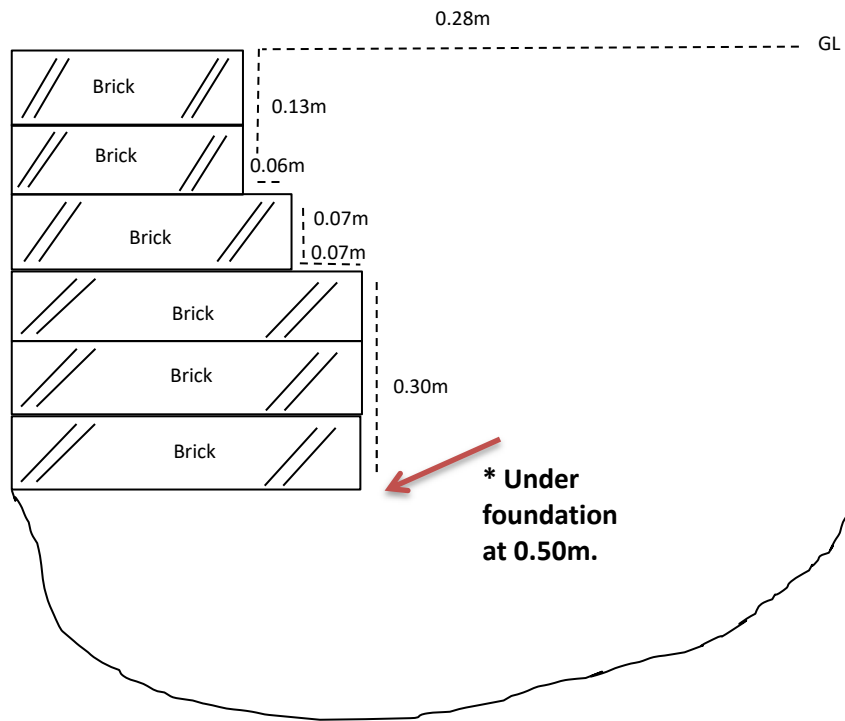
Date: March 2020

Checked: KRG

Approved: KRG

Scale: NTS

		Windowless Sample Log										Location No	
BH1													
Project:		Agamemnon Road										Date	
Project No:		4907										20/03/2020	
Location:		BH1										Logged By	
Client:		Josh Rosen										RS	
In Situ Testing									Hand Pen		Depth (m)	Stratum Description	
Depth (m)	Type	Seating		Main Drive				"N"					Depth (m)
		1	2	1	2	3	4						
1.0	SPT	1	2	2	2	2	3	9			0	Concrete slab	
2.0	SPT	2	1	2	2	3	3	10			0.04	0.04	CONCRETE
3.0	SPT	1	2	2	3	4	3	12					Fine to coarse fragments of angular to subrounded concrete and fine to medium fragments of round to subrounded brick.
4.0	SPT	2	4	4	5	5	6	20			MADE GROUND		
5.0	SPT	2	3	3	3	4	5	15				Course yellow sand with fine to medium fragments of round to subrounded brick.	
6.0	SPT	2	3	3	4	4	5	16			MADE GROUND		
7.0	SPT	3	3	4	4	5	6	19				Course yellow sand with fine to medium fragments of round to subrounded brick.	
8.0	SPT	3	4	4	4	4	5	17			MADE GROUND		
Sampling												0.20	MADE GROUND
Depth (m)		Type		Soil Type							0.20	Soft to firm brown very sandy gravelly clay with frequent roots (<4mm) and rootlets. Sand is medium to coarse. Gravel is composed of fine to medium fragments of brick and concrete.	
0.3		D		MADE GROUND							0.40	MADE GROUND	
0.5		D		MADE GROUND									
1.0		D		CLAY							0.40	Firm to stiff orangish brown slightly sandy CLAY with occasional blue mottling.	
1.5		D		CLAY									
2.0		D		CLAY							2.70	CLAY	
2.5		D		CLAY									
3.0		D		CLAY							3.05	Stiff orangish brown slightly sandy slightly gravelly CLAY with occasional blue mottling. Sand is fine. Gravel is fine to medium angular to subangular.	
3.5		D		CLAY									
4.0		D		CLAY							3.05	Stiff orangish brown slightly sandy CLAY with occasional blue mottling. Sand is fine. Occasional fine to medium selonite fragments.	
4.5		D		CLAY									
5.0		D		CLAY							5.00	CLAY	
5.5		D		CLAY									
6.0		D		CLAY							5.00	Very stiff orangish brown slightly sandy CLAY. Sand is fine. Orangish yellow sandy pocket at 5.55m.	
6.5		D		CLAY									
7.0		D		CLAY							7.30	CLAY	
7.5		D		CLAY									
8.0		D		CLAY					7.30	Very stiff bluish grey sandy CLAY. Sand is fine.			
Notes											8.00	End of borehole	
Hand dug pit to 1.20m.													
Backfilled with arisings to 4.5m. Bentonite seal between 4.5 - 4m. Install at 4m (1m Plain / 3m Slotted pipe). Hole dry.													

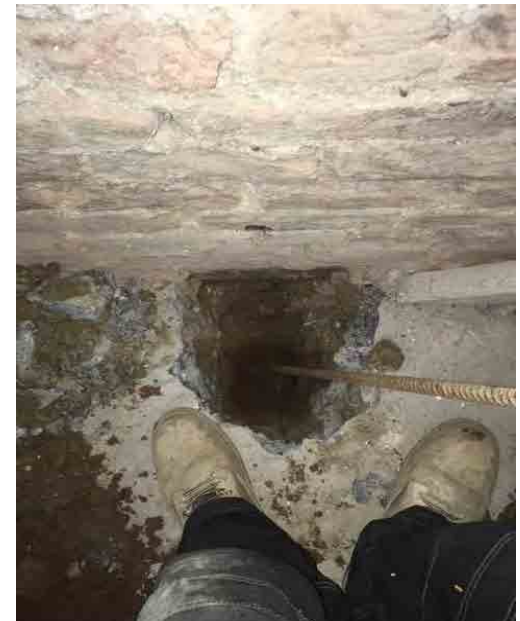



Log

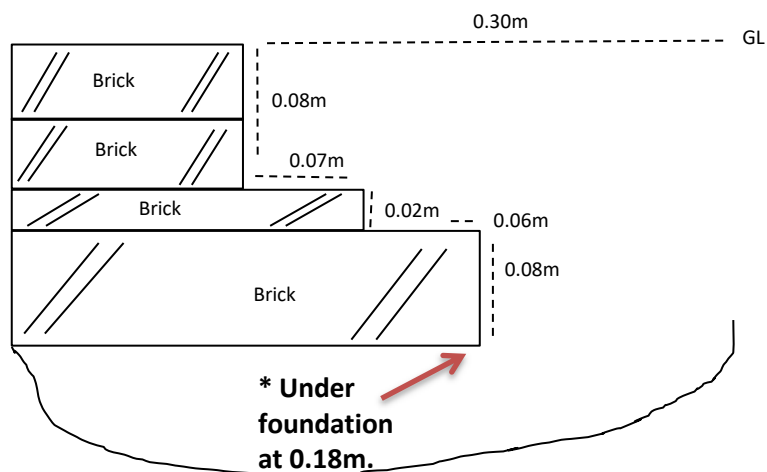
0.00 - 0.08m: Concrete (**CONCRETE**)

0.08 - 0.50m: soft to firm brown sandy clay with abundant fine to medium fragments of brick and concrete. Sand is coarse. (**MADE GROUND**)

Sample: Disturbed at 0.50m (**MADE GROUND**)



Project:	Agamemnon Road			Title	Trial Pit 1 Sketch	
Client:	Josh Rosen			<div>Unit 13, Firsland Park Estate, Henfield Road, Albourne, West Sussex, BN6 9JJ</div> <div><div>OAKLAND site investigation</div></div>		
Ref No:	4907	Revision:	1			
Drawn:	RS	Date:	31/03/2020			
Figure:	1	Scale:	Not to scale			




Log

0.00 - 0.08m: Concrete (**CONCRETE**)

0.08 - 0.50m: soft to firm brown sandy clay with abundant fine to medium fragments of brick and concrete. Sand is coarse. (**MADE GROUND**)

Sample: Disturbed at 0.18m (**MADE GROUND**)



Project:	Agamemnon Road			Title	Trial Pit 2 Sketch	
Client:	Josh Rosen			<div>Unit 13, Firsland Park Estate, Henfield Road, Albourne, West Sussex, BN6 9JJ</div> <div> <div>OAKLAND site investigation</div></div>		
Ref No:	4907	Revision:	1			
Drawn:	RS	Date:	31/03/2020			
Figure:	2	Scale:	Not to scale			

SUMMARY OF LIQUID AND PLASTIC LIMIT TESTS

Location	Depth m	Sample Ref	Sample Type	Description	Water Content BS EN ISO 17892-1 : 2014 %	Liquid Limit %	Plastic Limit %	Plasticity Index %	Percentage Passing 425µm %	Atterberg Classification	Test Type	Sample Condition
BH1	1.00		D	Brown mottled orangish brown and dark brown slightly fine sandy silty CLAY.	32.6	~	~	~	~	~	~	~
BH1	1.50		D	Brown mottled orangish brown slightly fine sandy silty CLAY.	29.2	70	27	43	99	CH	1	1
BH1	2.00		D	Brown mottled orangish brown slightly fine sandy silty CLAY.	29.8	~	~	~	~	~	~	~
BH1	2.50		D	Brown mottled orangish brown and grey slightly fine sandy silty CLAY with rare gypsum.	30.2	~	~	~	~	~	~	~
BH1	3.00		D	Brown mottled orangish brown and grey slightly fine sandy silty CLAY with rare gypsum.	29.6	~	~	~	~	~	~	~
BH1	3.50		D	Brown mottled orangish brown and grey slightly fine sandy silty CLAY with rare gypsum.	28.9	~	~	~	~	~	~	~
BH1	4.00		D	Brown mottled orangish brown and grey slightly fine sandy silty CLAY with rare gypsum.	29.5	76	28	48	99	CV	1	1
BH1	4.50		D	Brown mottled orangish brown and grey slightly fine sandy silty CLAY with rare gypsum.	29.7	~	~	~	~	~	~	~
BH1	5.00		D	Brown slightly fine sandy silty CLAY with rare fine gypsum.	29.0	~	~	~	~	~	~	~
BH1	6.00		D	Brown slightly fine sandy silty CLAY with rare fine gypsum.	29.7	81	30	51	99	CV	1	1
BH1	7.00		D	Brown mottled orangish brown slightly fine sandy silty CLAY with rare fine gypsum.	28.6	~	~	~	~	~	~	~
BH1	8.00		D	Dark brown slightly fine sandy silty CLAY.	26.2	68	27	41	99	CH	1	1

Test Type:

- 1 - 1 point 80g / 30° fall cone method.
 2 - 4 point 80g / 30° fall cone method.
 3 - Non plastic determination.

Sample condition:

- 1 - As Received
 2 - Air Dried
 3 - Washed & Air Dried

Checked and Approved by:



S Burke - Senior Technician
 06/04/2020

Project Number:

GEO / 30889

Project Name:

46 Agamemnon Road, London NW6 1EN
 GGC20807

GEOLABS®

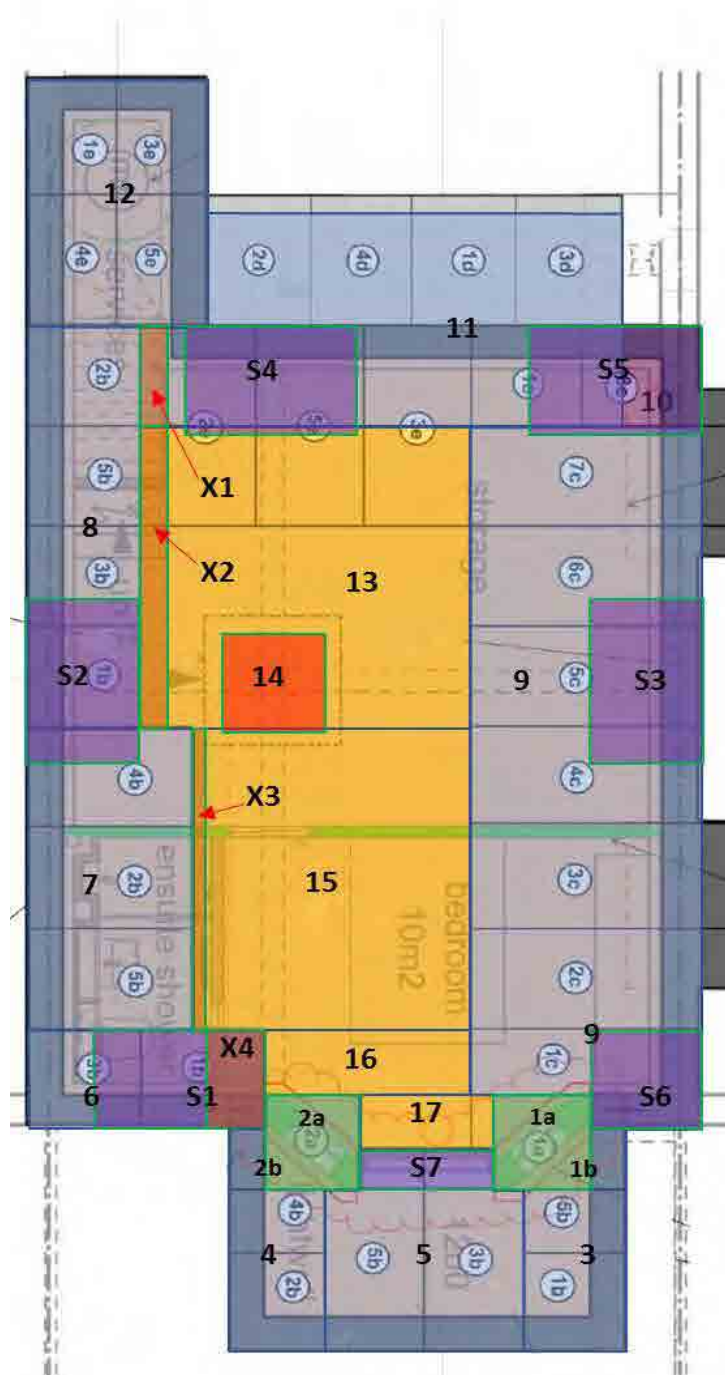


Tested by Chemtest Ltd : MCERTS / UKAS No 2183

GEOLABSPage 1 of 1
(Ref 1586862473)

APPENDIX G

PDISP Heave/Settlement Analysis Figures G1 – G6

**Key:**

Green zones (1a & 2a) = temporary (sacrificial) mass concrete underpins to front bay.

Blue zones (1b, 2b & 3 to 12) = underpins and RC retaining walls.

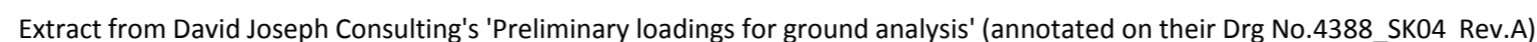
Orange zones = correction for varying depths of excavation, within a zone or straddling more than one zone.

Purple zones (S1 - S7) = Superimposed point loads and load from completed bay on Zone 5.

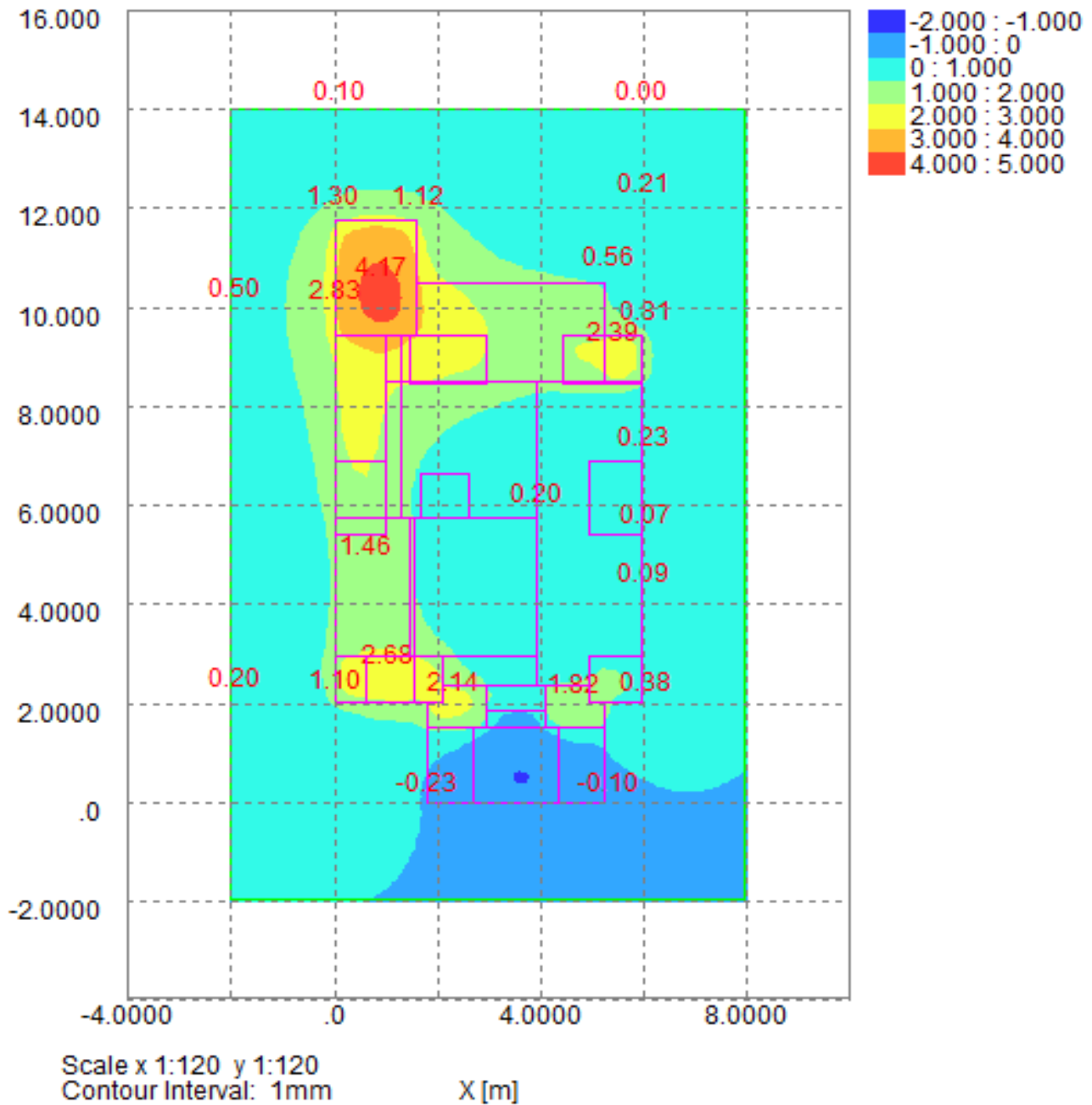
Red zone (14) = Existing pad footing to be removed.

Yellow zones = excavation and basement slab.

Notes: 1. Base drawing is from 'Proposed Preliminary Basement Floor Plan' (DJC's Drg No. 4388_SK04 Rev.A)



Settlement Contours : Grid 1 at -3.2000m

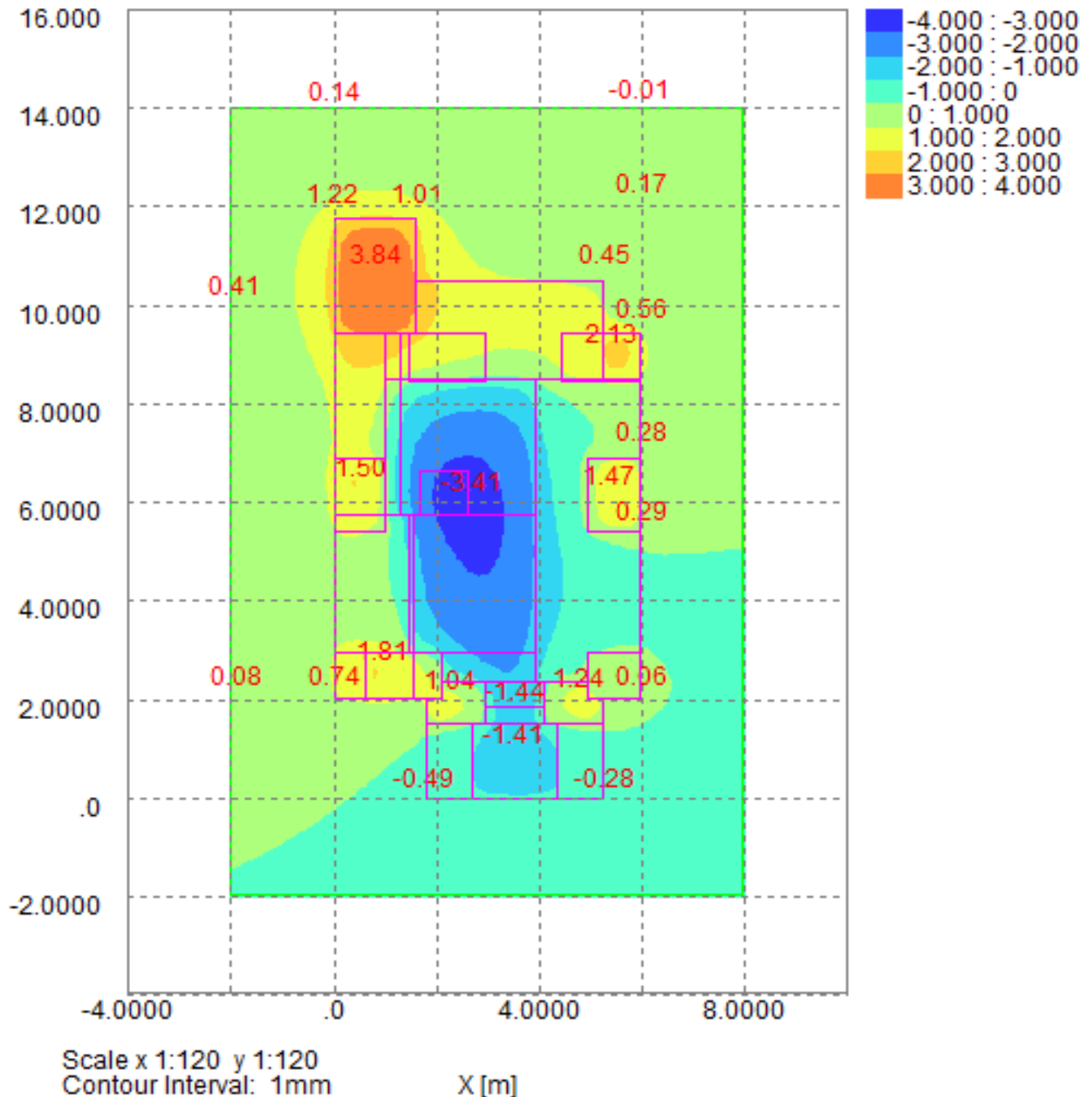


Project:

46 Agamemnon Road, London, NW6 1EN

GGC20807

Settlement Contours : Grid 1 at -3.2000m



Title: PDISP Output - Contour Plot for Stage 2

Figure: G4

Date: July 2020

Checked: KRG

Approved: KRG

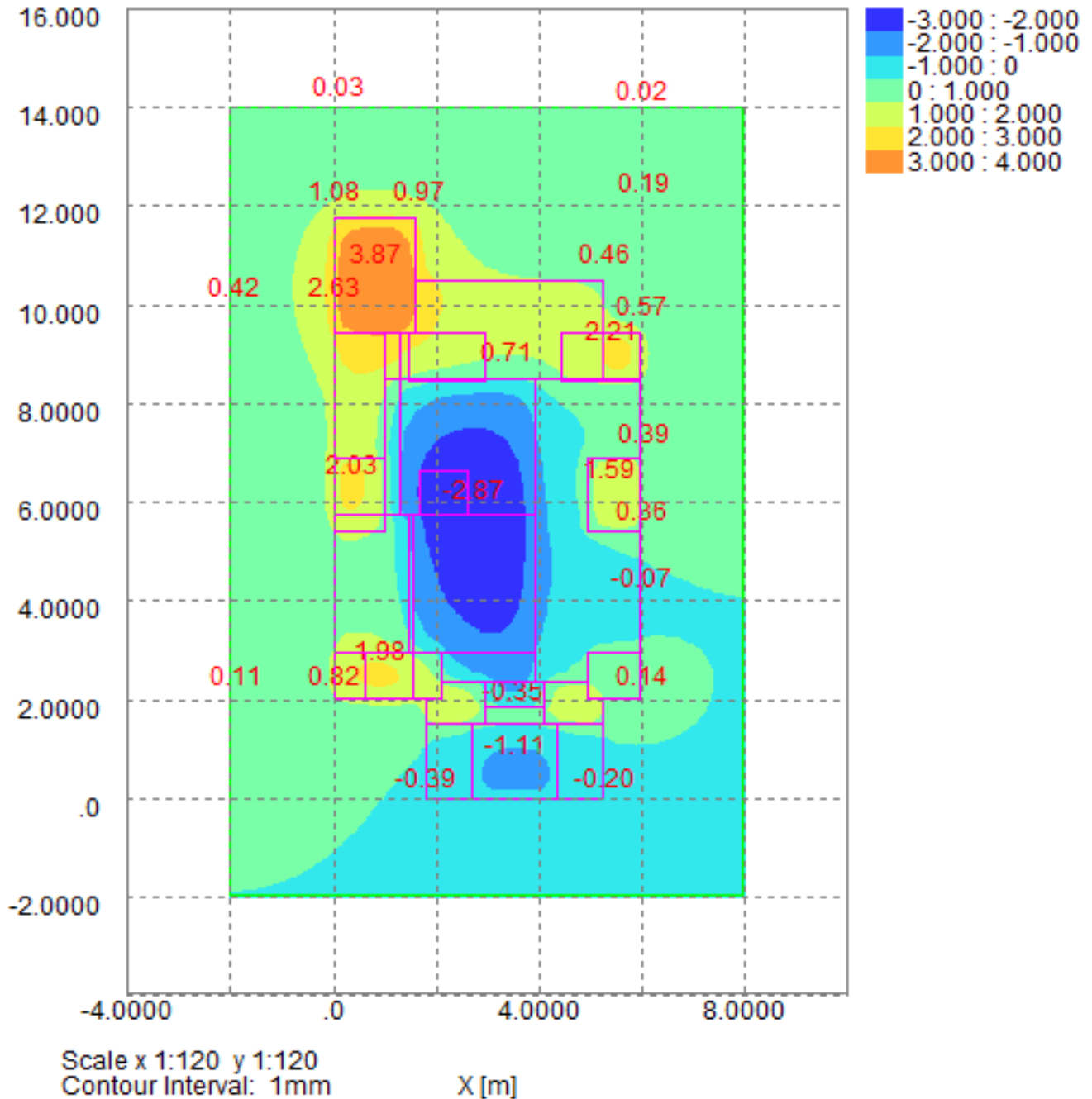
Scale: NTS

Project:

46 Agamemnon Road, London, NW6 1EN

GGC20807

Settlement Contours : Grid 1 at -3.2000m



Title: PDISP Output - Contour Plot for Stage 3

Figure: G5

Date: July 2020

Checked: KRG

Approved: KRG

Scale: NTS

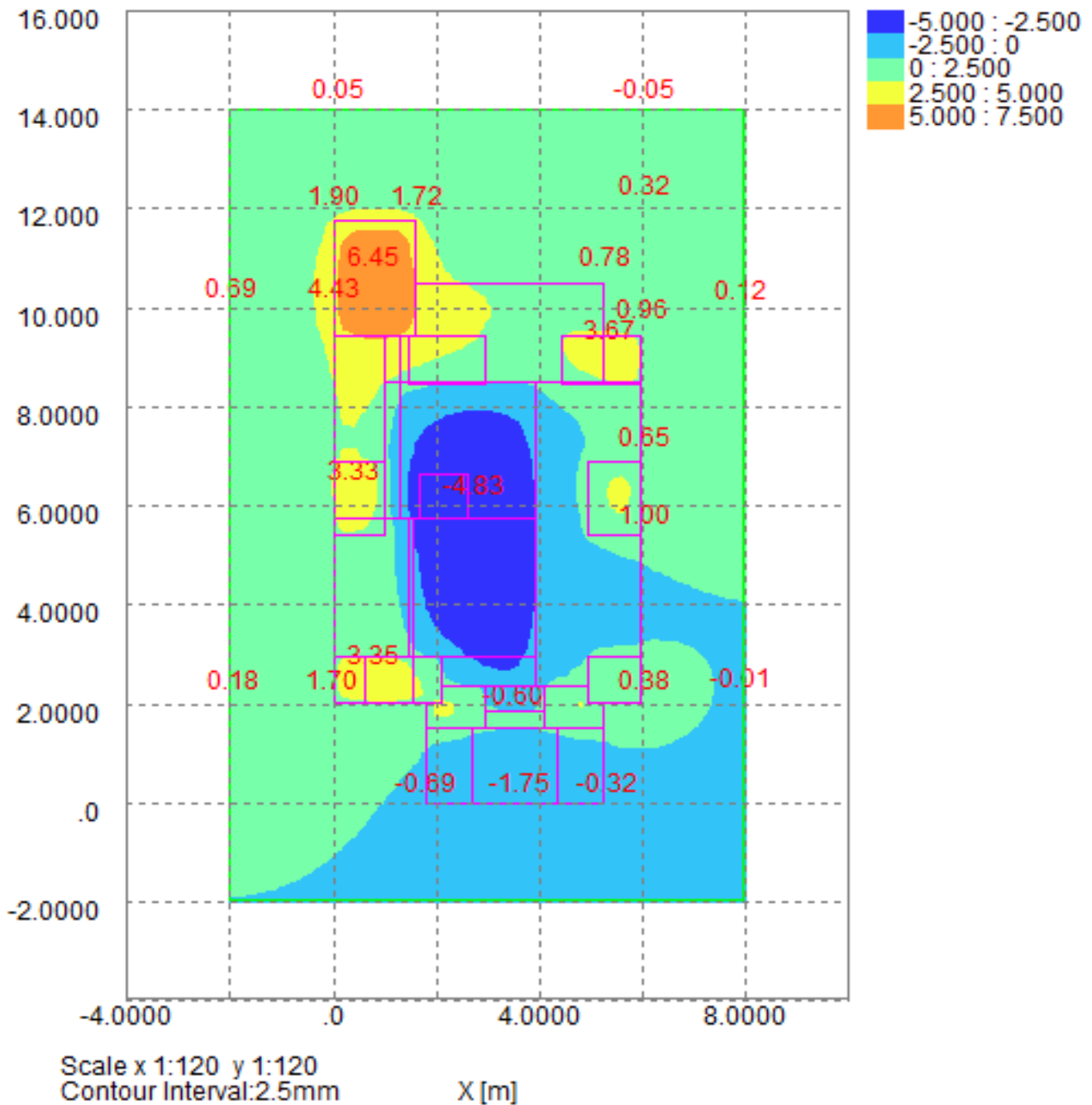
Project:

46 Agamemnon Road, London, NW6 1EN

GabrielGeo
Consulting

GGC20807

Settlement Contours : Grid 1 at -3.2000m



Title: PDISP Output - Contour Plot for Stage 4

Figure: G6

Date: July 2020

Checked: KRG

Approved: KRG

Scale: NTS