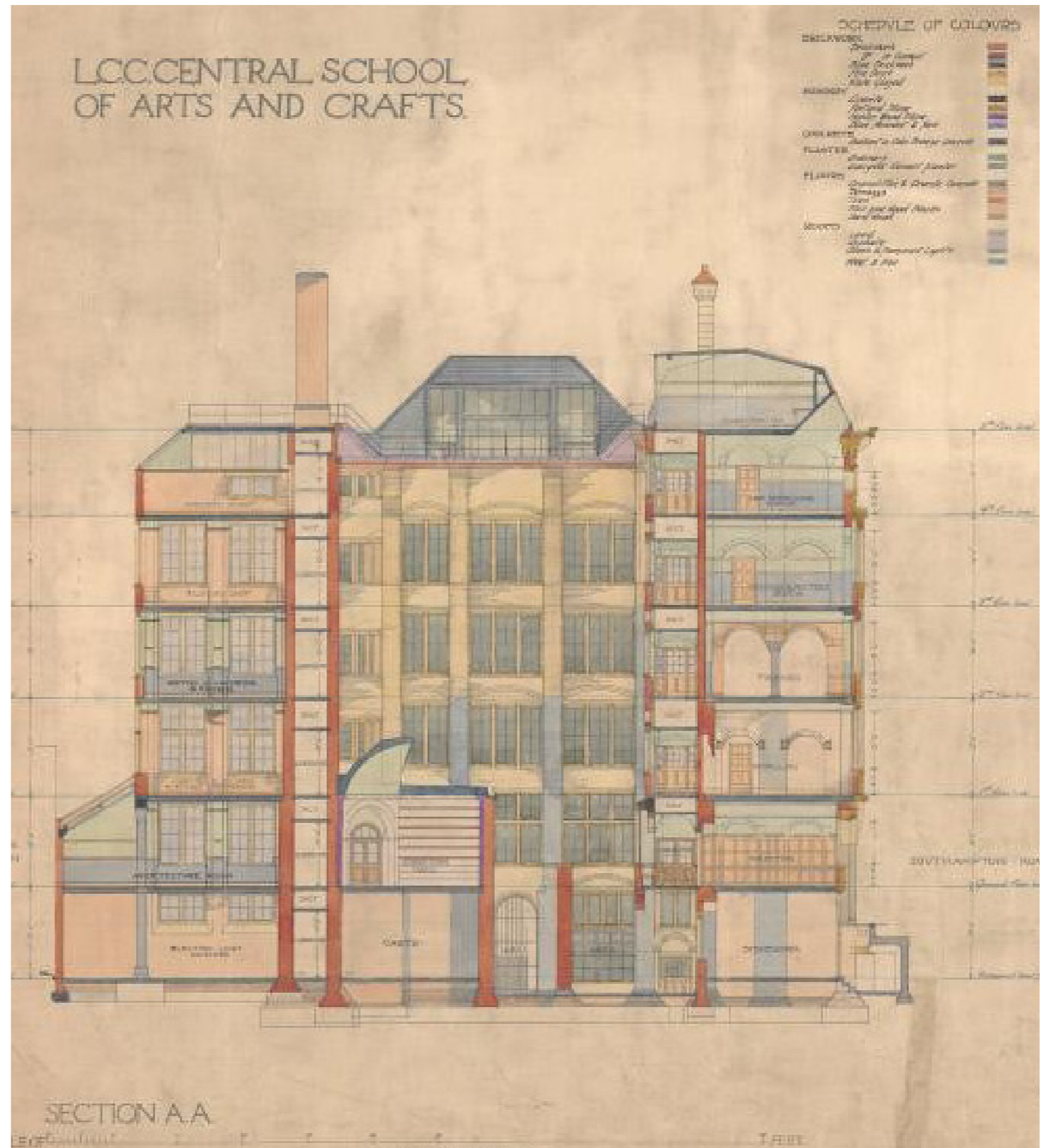


Project

The Former Central Saint Martin's Site

Title

DAS Update - Fisher Street Elevation



Project name	Orms project number	Project team code	File
The Former Central St Martin's Site	2233	GSM	GSM-ORM-XX-XX-RP-A-32003

Revision	Date	Description	Status	Created	Checked
P01	25.08.20	Planning Issue	PL - PLANNING	PG	SW

This Design and Access Statement addendum explains and illustrates the changes to the Fisher Street Elevation following review with Camden Planning Authority. This document has been prepared to capture updates relating to the Fisher Street Elevation after submission of the full Design and Access Statement.

# Fisher Street Elevation Update

## Elevation Update

During review of the application drawings, Camden Planning Authority provided some feedback relating to the design of the Fisher Street Elevation.

Camden's concerns specifically related to the elevation of the Red Lion building – particularly around the service bay. This elevation was considered to have a considerable extent of metal louvres/gates along the façade, which were to the detriment of the street environment.

Orms and Gerald Eve met with Camden Planning Authority on 13/08/20 to discuss the comments and concerns raised.

Following this meeting, Orms provided a revised design for the elevation. A second meeting took place between Orms and Camden Planning Authority on 20/08/20 to discuss the design updates, which were positively received and accepted.

The updated proposal includes:

1. Proposed timber louvres (rather than metal louvres) within four bays to 'soften' the visual impact of required louvred areas.
2. An updated design for the metal loading bay door. The updated design gives a greater vertical emphasis and carefully positions the angles of the metal louvres to create the appearance of three bays.
3. An updated the design for the entrance at the junction with the Lethaby Building. The design update includes adding a pre-cast concrete frame around the bay, adding a glazed vertical fin and updating the design of the metal louvres.



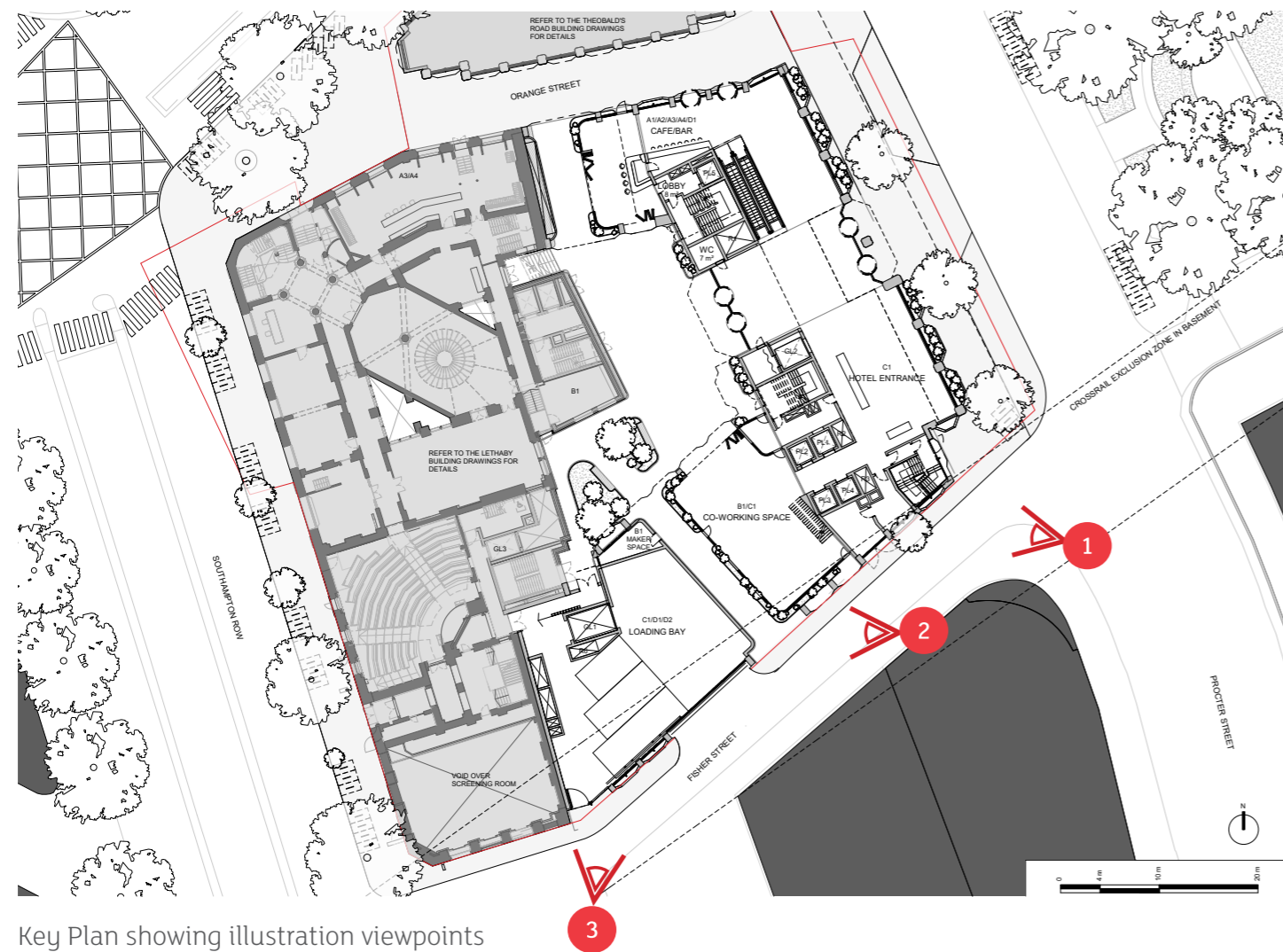
Initial design - Fisher Street Elevation (extract from drawing: GSM-ORM-ZZ-SO-DR-A-12602\_revP02).



Updated design - Fisher Street Elevation (extract from drawing: GSM-ORM-ZZ-SO-DR-A-12602\_revP03).

# Fisher Street Elevation Update

Illustrations of changes



Key Plan showing illustration viewpoints



View 01. Illustration of Initial design



View 01. Illustration of Updated design

# Fisher Street Elevation Update

Illustrations of changes



View 02. Illustration of Initial design



View 03. Illustration of Initial design



View 02. Illustration of Updated design



View 03. Illustration of Updated design