

2.6 Cycle Storage

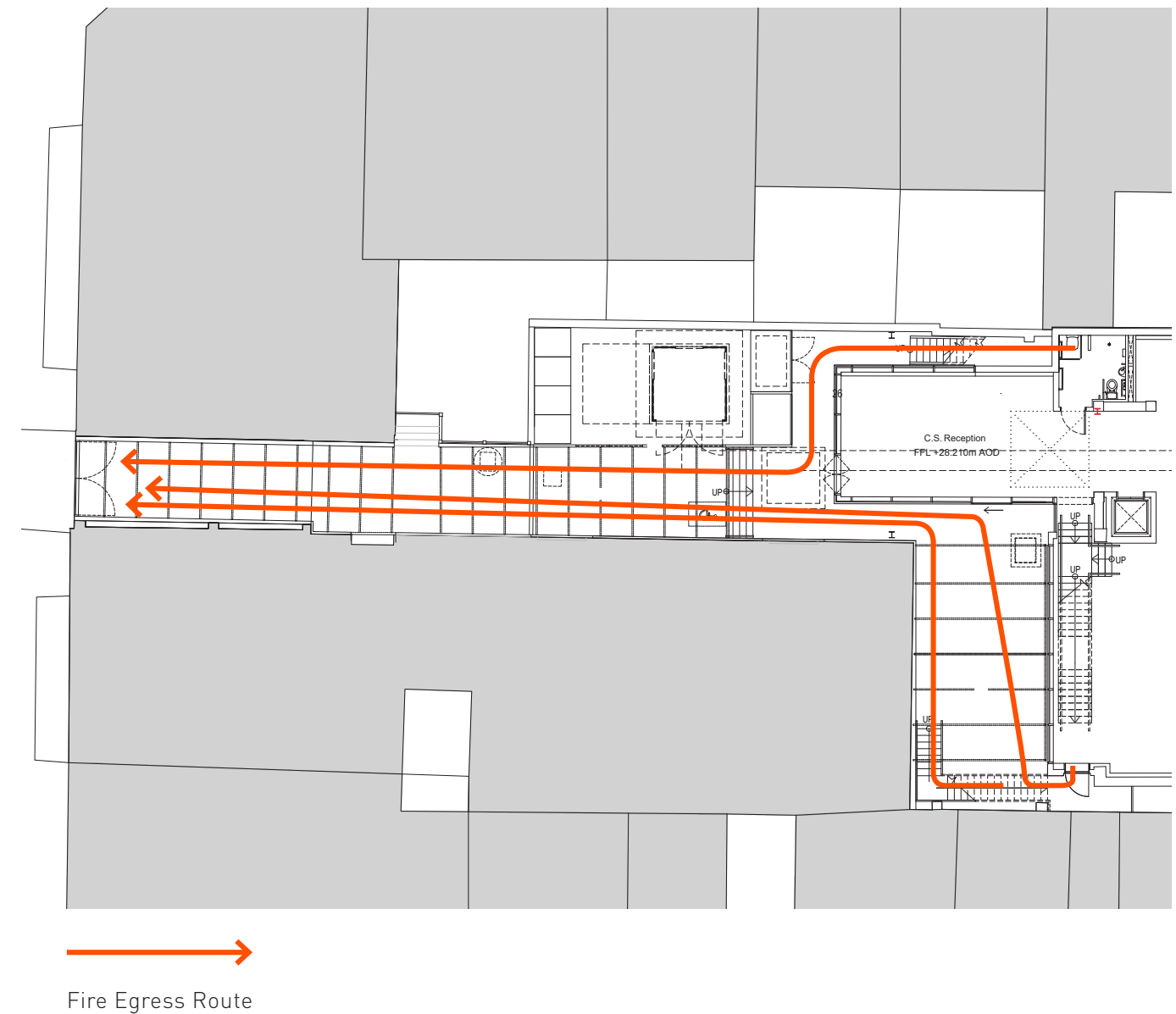
The consented proposals provided a total of 30 cycle storage spaces divided between the basement cycle storage and changing facility and the external space accessed from Charlotte Street.

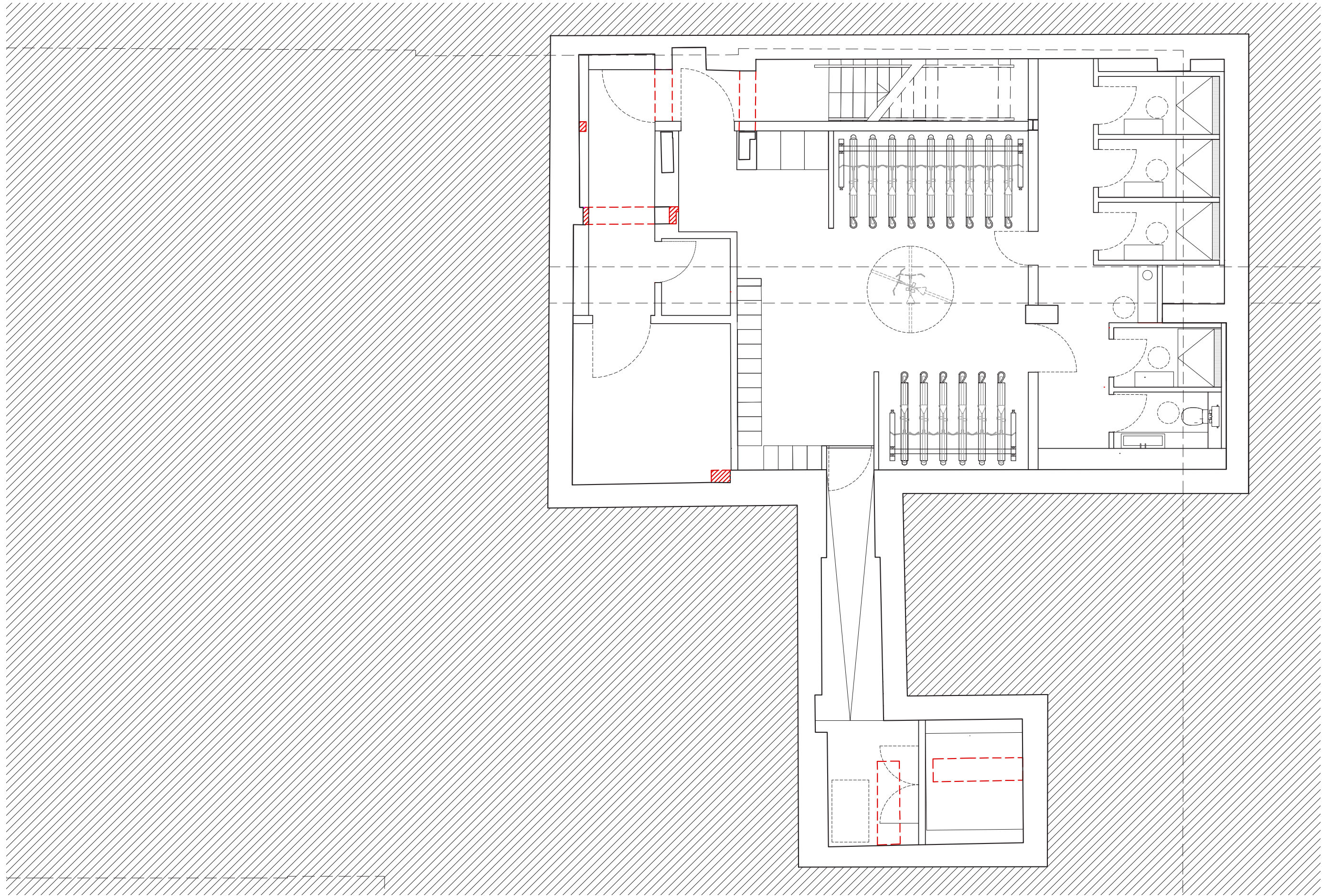
The external space has a number of constraints that limit the positioning of cycle storage. Three fire egress routes traverse through the area, a UKPN substation with strict servicing requirements is positioned here alongside the the building's refuse store, also with regular servicing.

Liaison with UKPN has resulted in a number of additional constraints on the external space than known during the development of the consented proposals. This has resulted in the removal of the storage provision as previously indicated.

It has been possible to revise the basement layout to accommodate the full 30-space provision alongside 6no. Brompton storage spaces.

The building is in close proximity to a number of public transport services (Goodge Street Underground station is a 1 minute walk from the building) and has a maximum PTAL rating of 6B.





Proposed cycle storage area

fletcher priest architects
london + köln + rīga

middlesex house
34/42 cleveland st
london W1T 4JE

t +44 (0)20 7034 2200
f +44 (0)20 7637 5347
e london@fletcherpriest.com
www.fletcherpriest.com

CES +
ISO 9001
ISO 14001
RIBA Chartered Practice
UKGBC