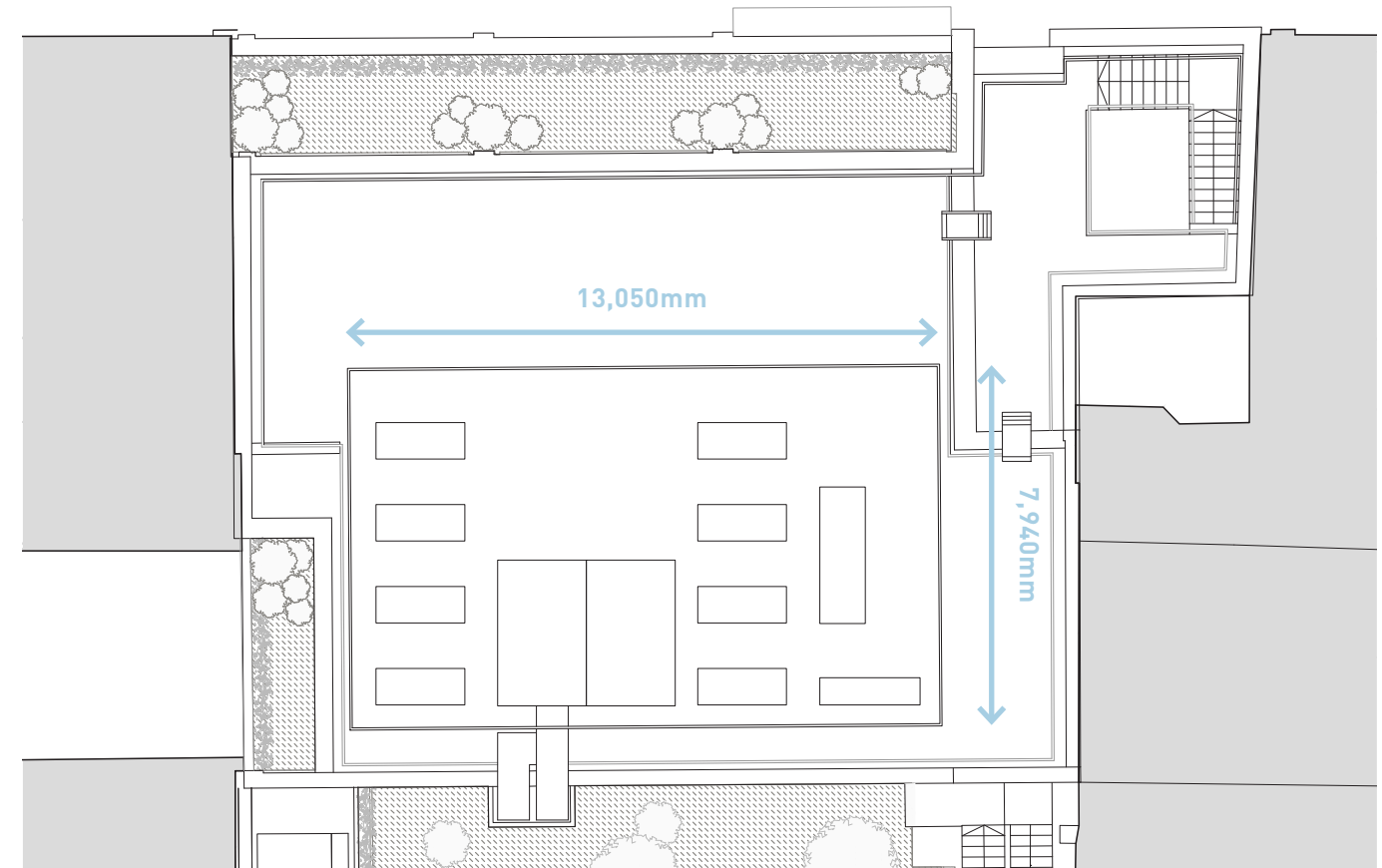


2.5 Rooftop Plant

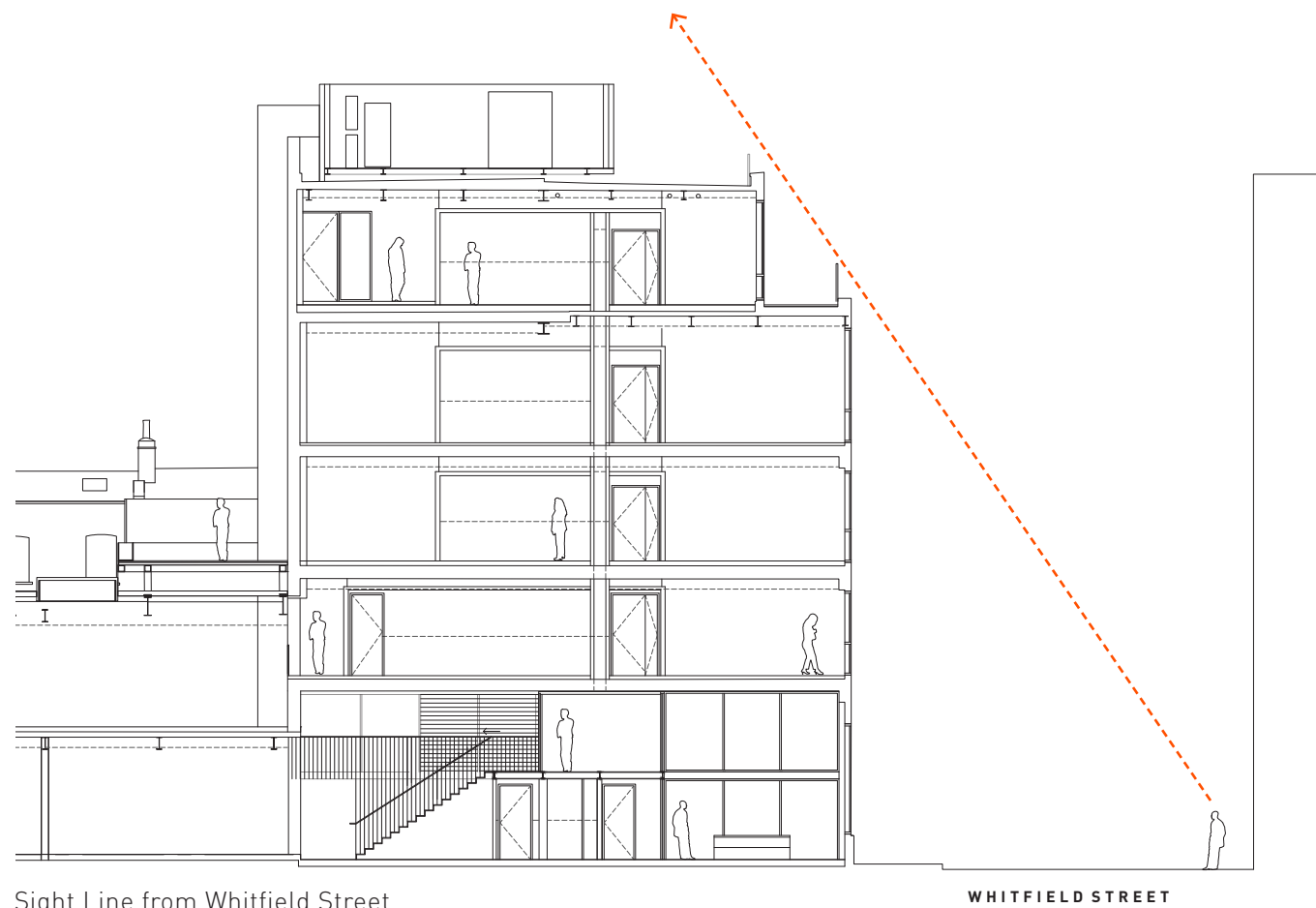
Further development of the arrangement of plant equipment at roof level has resulted in a number of units protruding above the level of the consented plant screen.

The proposed amendment looks to increase the height of the screen to completely conceal the plant equipment and to marginally alter the dimensions in plan in order to accommodate the required noise attenuation as illustrated on the adjacent drawings.

The screen will fully conceal all roofplant from the street and from the upper levels of neighbouring buildings.

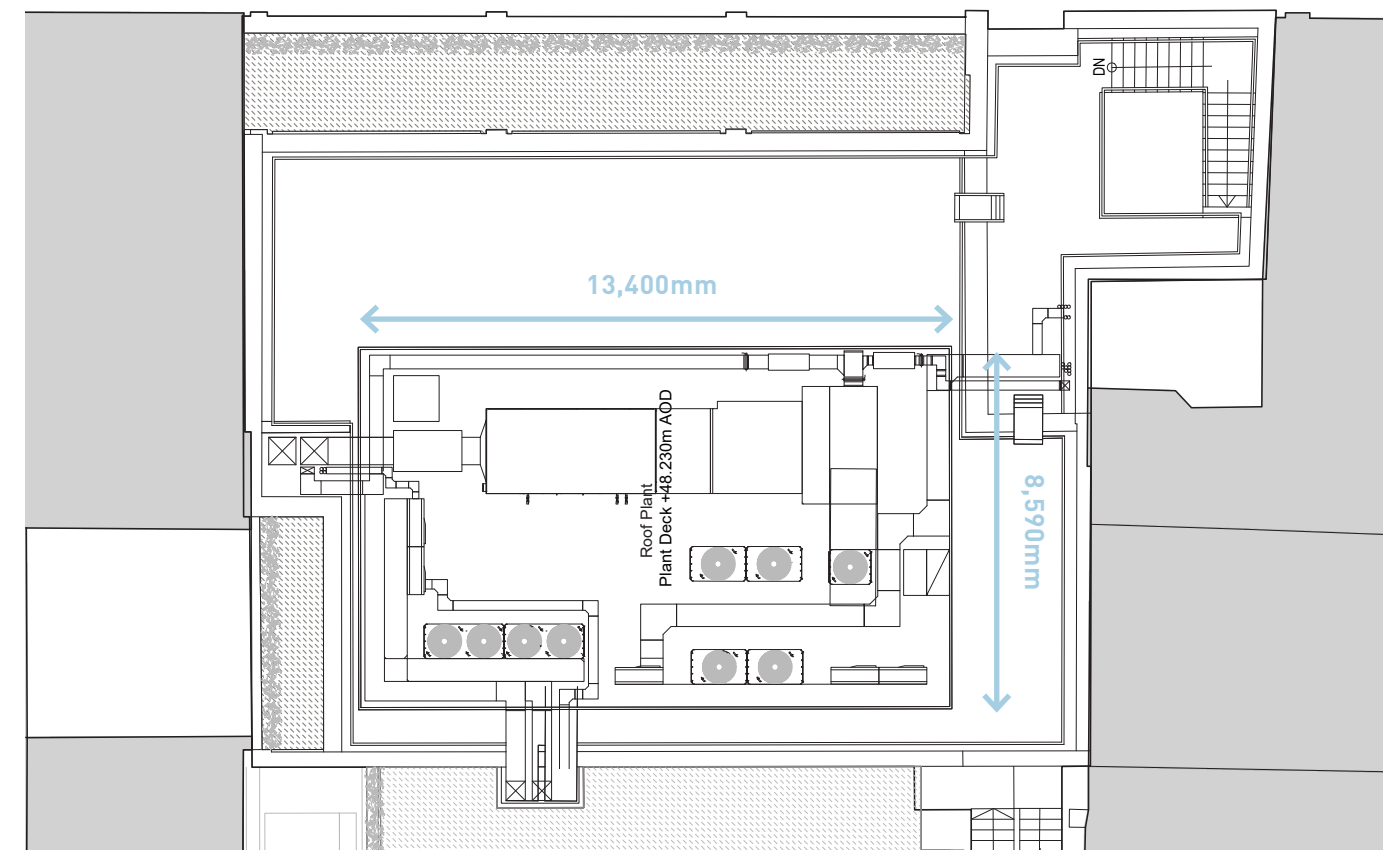


Consented Roof Plan



Sight Line from Whitfield Street

WHITFIELD STREET



Proposed Roof Plan