

2.1 Whitfield Street Elevation

The design of the Whitfield Street elevation has been developed to reinstate the position of the existing building entrance, thereby facilitating a more efficient internal reception layout and restoring the architectural order of the facade.

A new terracotta panel provides a textural and tonal quality at the building threshold to reference the internal clay pot and beam soffits, visible from street level through the glazing. The panel also offers the opportunity to incorporate building signage and a dry riser inlet.

- 1 Building entrance reinstated to existing position
- 2 Terracotta entrance and signage panel with integrated dry riser inlet



Existing Whitfield Street Elevation - Illustrative



Consented Whitfield Street Elevation - Illustrative



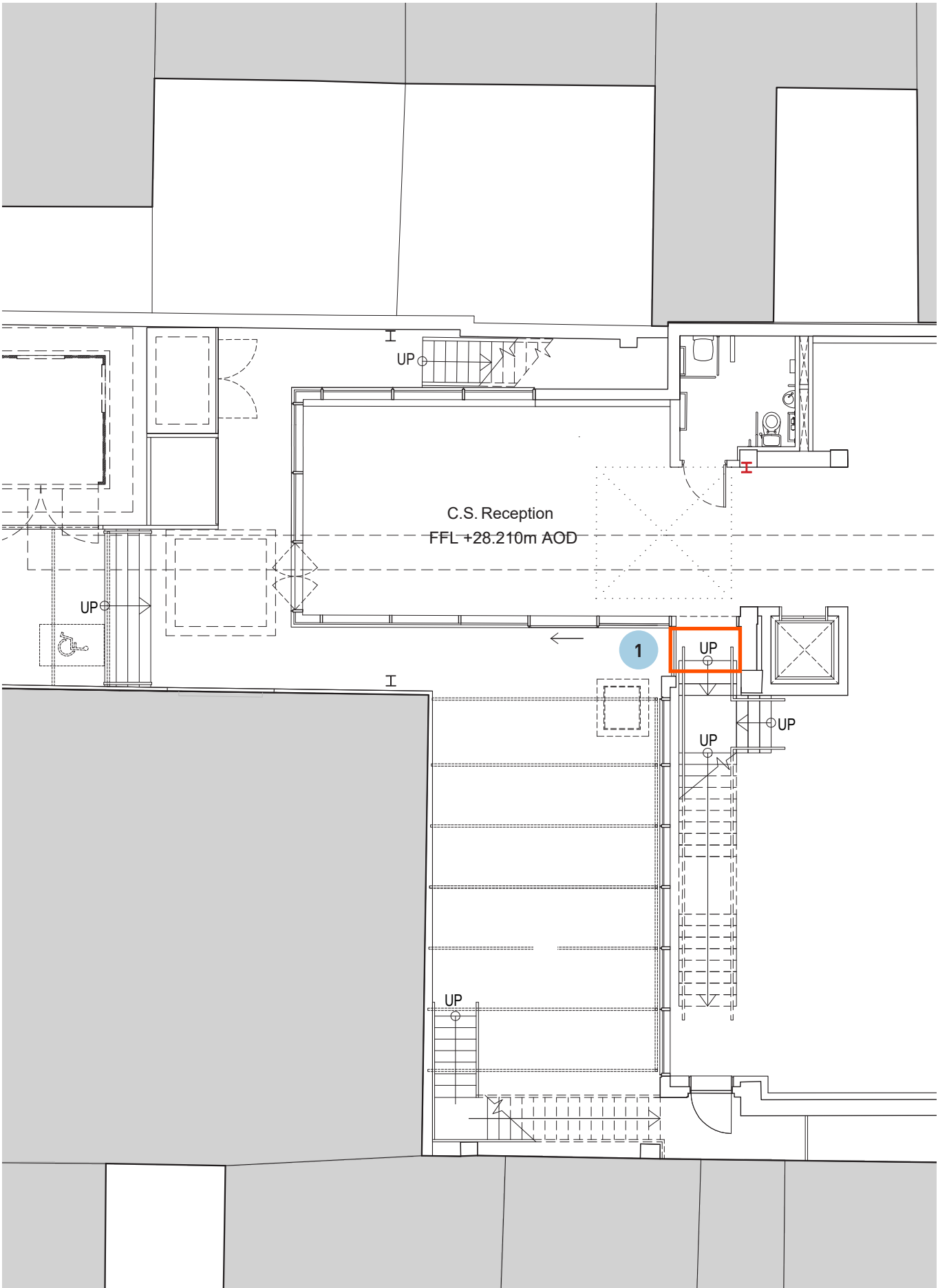
Proposed Whitfield Street Elevation - Illustrative

2.2 Envelope Infill

A minor extension of the building envelope, bridging the gap between the south west facing elements at ground floor, will allow access to an internal stair linking ground with first floor.

The extension will read as a continuation of the glazed frontage and will be detailed to match the existing envelope.

1 Envelope infill



 Extent of infill

Proposed Extent of Envelope Infill



Consented Charlotte Street Elevation - Illustrative

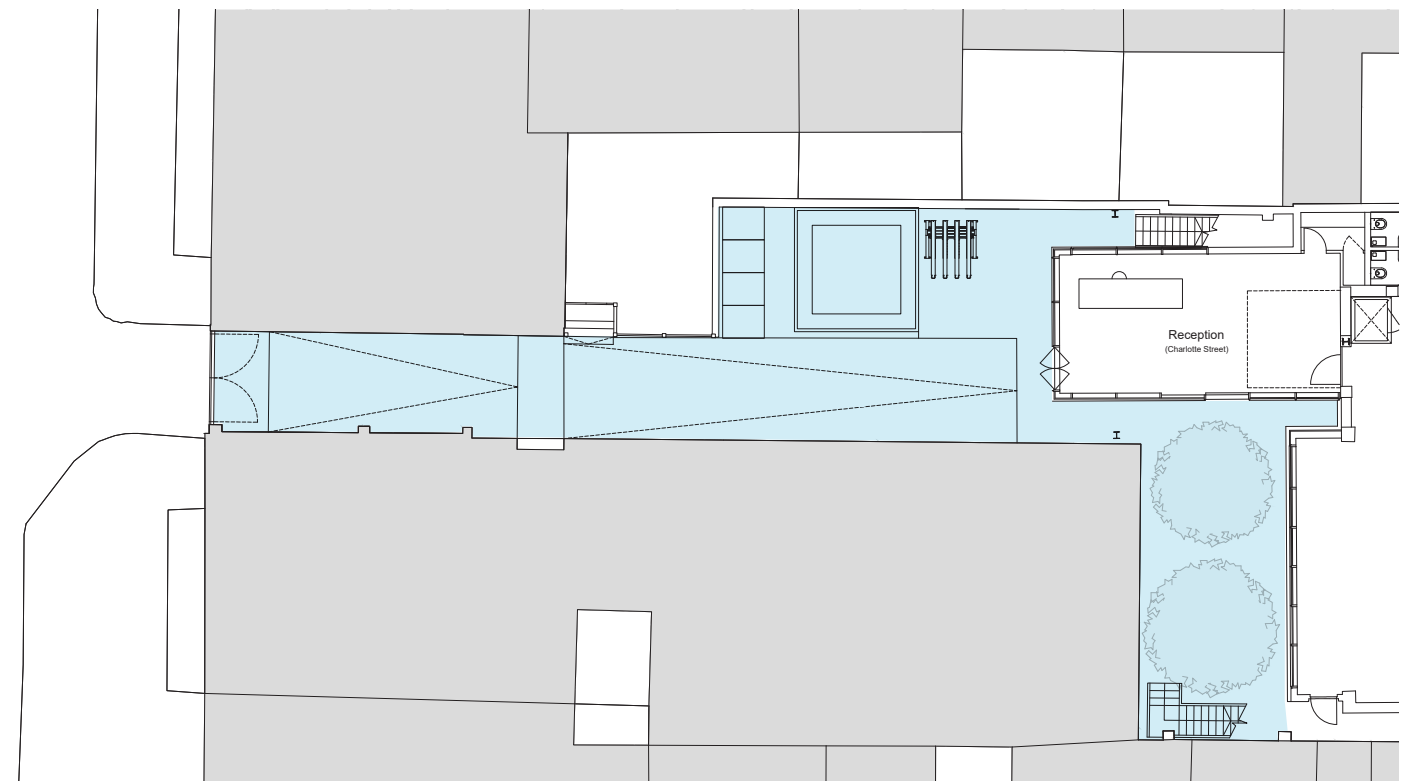


Proposed Infill Elevation - Illustrative

2.3 External Works

A number of design developments have influenced the layout and character of the external areas separating the building from its neighbours, highlighted on the adjacent plan.

- 1** The UKPN substation and refuse store have been adjusted in position and are contained within a single enclosure to provide an elemental simplicity to the passageway and a clear route to the street for maintenance.
- 2** The existing levels are significantly revised to form a new level approach to the building, minimising the number of steps required to reach the entrance doors. A concealed lift integrated into the stair provides a step-free route for wheelchair users in and out of the building.
- 3** The passageway is lined with planting hosted within bespoke planters. A lightweight structure extends the scale of the entrance tunnel to the building entrance whilst mediating the level of enclosure, providing an appropriate response to the arrival experience.
- 4** Painted metal mesh and vertical timber batons line the tunnel enclosure concealing lighting and the existing varied geometries of the soffit.
- 5** A similar lightweight structure proposed for the entrance sequence also extends into this area to unify the space and create a consistent feel. An awning feature is added for flexibility.
- 6** Escape stair replaced to provide adequate egress provision to align with current regulations.



Consented Plan - Scope of External Area



Proposed Plan - Scope of External Area