

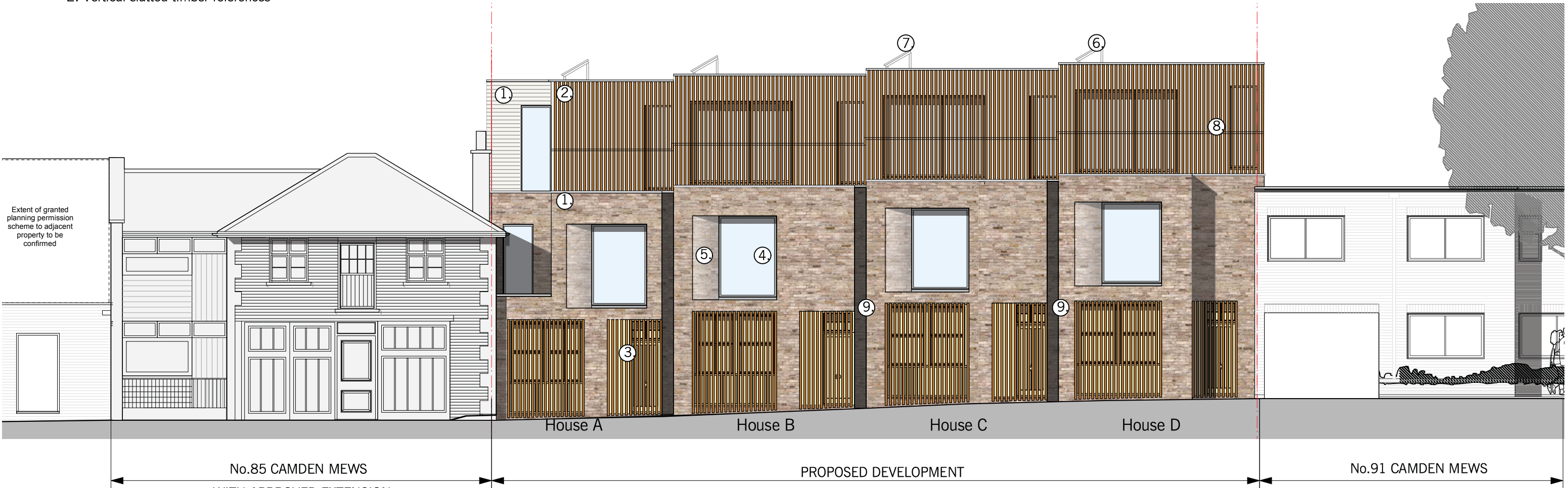
Material Examples



2. Vertical slatted timber references

Legend:

- 1. Facing brickwork
- 2. Vertical slatted timber cladding
- 3. Hardwood main entrance door and window & vertical slatted timber
- 4. Powder coated aluminium window
- 5. Splayed brick reveal
- 6. Biodiverse green roof
- 7. PV panels
- 8. 1.1m high railing
- 9. Recessed brickwork



Revision A:
Camden Mews street level indicated. Fenestration design revised. Laser cut steel panel balustrade introduced to top floor at Houses A&C. Roof profile revised between houses and slope to House A introduced.

Revision B:
Sliding hardwood screens replaced with stained hardwood panels. Fenestration design revised. Splayed brick reveal indicated to Houses A&C at first floor.

Revision C:
Houses A lowered by 430mm and House B lowered by 215mm, metal balustrade replaced with glass balustrade, extruded brick pattern and frameless bay window introduced to Houses B&D. Fenestration design revised.

Revision D:
Fenestration design revised. Introducing timber slat cladding. Adding recessed brickwork between dwellings. Access to units revised.

Revision E:
Timber slats for the front entrance follows the street gradient
1 x bat box added at the rear elevation

