



# VINE HILL LONDON

S73 DRAWINGS PACK

AUG 2020 | 8060\_L(00)216C

LeachRhodesWalker  
Architects

Project Title :

## VINE HILL - S73 APPLICATION



## REGISTER OF DRAWINGS AND ISSUE

Job No.		Code		Sheet No.		Day of issue		17	
8060		L(00)		1		Month of issue		08	
						Year of issue		20	
Dwg No	Title	Date	Type	Scale/Size	Revision :				
08	Proposed South Elevation	14.10.19	pdf	1:200@A3	E	F			
09	Proposed North Elevation	14.10.19	pdf	1:200@A3	E	F			
10	Proposed East Elevation	14.10.19	pdf	1:200@A3	E	E			
11	Proposed West Elevation	14.10.19	pdf	1:200@A3	E	E			
12	Proposed West Elevation	14.10.19	pdf	1:200@A3	E	F			
120	Proposed Section A-A	07.01.20	dwg	1:100@A1	A	B			
121	Proposed Section B-B	07.01.20	dwg	1:100@A1	A	B			
122	Proposed Section C-C	07.01.20	dwg	1:100@A1	/	A	B		
123	Proposed Section D-D	07.01.20	dwg	1:100@A1	B	C	D		
124	Proposed Section E-E	07.01.20	dwg	1:100@A1	B	B			
125	Proposed South Elevation	31.01.20	dwg	1:100@A1	B	C			
126	Proposed North Elevation	31.01.20	dwg	1:100@A1	B	C			
127	Proposed East Elevation	31.01.20	dwg	1:100@A1	B	B			
128	Proposed West Elevation	31.01.20	dwg	1:100@A1	B	B			
129	Proposed West Elevation	31.01.20	dwg	1:100@A1	B	C			
220	Hotel & Affordable Accomodation Roofscape Plan GA	19.02.20	dwg	1:100@A1	/	/			
500	Consolidated Plan_H Grd-Off Lwr Grd	16.06.20	dwg	1:100@A1		A			
501	Consolidated Plan_H Void-Off Upper Grd	16.06.20	dwg	1:100@A1		B			
502	Consolidated Plan_H 1st_Off Upper Grd Mezz	16.06.20	dwg	1:100@A1		A			
503	Consolidated Plan_H 2nd-Off 1st	16.06.20	dwg	1:100@A1		B			
504	Consolidated Plan_H 3rd-Off 1st Mezz	16.06.20	dwg	1:100@A1		A			
505	Consolidated Plan_H 4th-Off 2nd	16.06.20	dwg	1:100@A1		B			
506	Consolidated Plan_H 5th-Off 2nd Mezz	16.06.20	dwg	1:100@A1		B			
507	Consolidated Plan_H 6th-Off Roof	16.06.20	dwg	1:100@A1		A			
508	Consolidated Plan_H 7th-Off Roof	16.06.20	dwg	1:100@A1		A			
509	Consolidated Plan_H Roof-Off Roof	16.06.20	dwg	1:100@A1		A			
Consented Piercy & Co Drawings									
13548-A LXX 04 101	Proposed West Elevation Office Block	26.10.18	dwg	1:100@A1	A				
13548-A LXX 04 102	Proposed North Elevation Affordable & Office Block	26.10.18	dwg	1:100@A1	A				
13548-A LXX 04 104	Proposed East Elevation Hotel & Affordable Block	26.10.18	dwg	1:100@A1	A				
13548-A LXX 04 105	Proposed West Elevation Hotel & Affordable Block	26.10.18	dwg	1:100@A1	A				
13548-A LXX 05 101	Proposed Section A-A	26.10.18	dwg	1:100@A1	A				
13548-A LXX 05 102	Proposed Section B-B	26.10.18	dwg	1:100@A1	A				
13548-A LXX 04 103	Proposed Section C-C	26.10.18	dwg	1:100@A1	A				
13548-A LXX 04 105	Proposed Section E-E	26.10.18	dwg	1:100@A1	A				
13548-A LUG 00 099	Proposed Hotel/ Affordable - Ground FI Plan, Proposed Office - Lower Ground FI Plan	26.10.18	dwg	1:100@A1		A			
13548-A LUG 00 100	Proposed Hotel/ Affordable - Void, Proposed Office - Upper Ground FI Plan	26.10.18	dwg	1:100@A1		A			
13548-A L01 00 101	Proposed Hotel/ Affordable - First FI Plan, Proposed Office - UG FI Mezz	26.10.18	dwg	1:100@A1		B			
13548-A L02 00 102	Proposed Hotel/ Affordable - Second FI Plan, Proposed Office - 1st FI Plan	26.10.18	dwg	1:100@A1		B			
13548-A L03 00 103	Proposed Hotel/ Affordable - Third FI Plan, Proposed Office - 1st FI Mezz	26.10.18	dwg	1:100@A1		B			
13548-A L04 00 104	Proposed Hotel/ Affordable - Fourth FI Plan, Proposed Office - 2nd FI Plan	26.10.18	dwg	1:100@A1		C			
13548-A L05 00 105	Proposed Hotel/ Affordable - Fifth FI Plan, Proposed Office - 2nd FI Mezz	26.10.18	dwg	1:100@A1		B			
13548-A L06 00 106	Proposed Hotel/ Affordable - Sixth FI Plan, Proposed Office - Third FI Plan	26.10.18	dwg	1:100@A1		B			
13548-A L07 00 107	Proposed Hotel/ Affordable - Seventh FI Plan, Proposed Office - Roof Plan	26.10.18	dwg	1:100@A1		B			
13548-A LRF 00 110	Proposed Hotel/ Affordable - Roof Plan, Proposed Office - Roof Plan	26.10.18	dwg	1:100@A1	/				
Distribution					* Drg Issued Electronically (PDF) # Drg Issued Electronically (DWG)				
Client - Clerkenwell Lifestyle(UK) Ltd (Geneva Management Group)									
Project Manager - Avison Young									
Planning Consultant - DP9									
Planning Consultant - SM Planning									
Quantity Surveyor -									
Contractor - HG Constuction									
Collaboration Site - Dochosting									

# LRW Proposed Drawings





#### OFFICE:

1. Red multi textured brick
2. Precast concrete banding, colour to match red brickwork
3. Double glazed door
4. Double glazed opening into existing facade
5. Double glazed rooflight/window
6. Bronze colour metal balustrade
7. 1 hour fire rated double glazed window
8. London stock brick to match existing brickwork
9. Louvres to match brickwork

#### HOTEL/AFFORDABLE BLOCK:

- A. Dark warm brown colour metal frame double glazed windows
- B. Light warm tone glass reinforced concrete
- C. Dark tone glass reinforced concrete
- D. Roof plant louvred metal screen
- E. Double glazed panel
- F. Metal louvred door to match dark tone panel
- G. Dark warm brown colour patterned metal panel
- H. Light tone rustic brickwork
- I. Dark warm brown colour metal balustrade
- J. Dark warm brown colour tilt and turn double glazed window
- K. Dark warm brown colour metal frame window with patterned metal panels
- L. Double glazed door
- M. Light warm tone glass reinforced concrete banding



#### OFFICE:

1. Red multi textured brick
2. Precast concrete banding, colour to match red brickwork
3. Double glazed door
4. Double glazed opening into existing facade
5. Double glazed rooflight/window
6. Bronze colour metal balustrade
7. 1 hour fire rated double glazed window
8. London stock brick to match existing brickwork
9. Louvres to match brickwork
10. Charred Larch timber plant screen

#### HOTEL/AFFORDABLE BLOCK:

- A. Dark warm brown colour metal frame double glazed windows
- B. Light warm tone glass reinforced concrete
- C. Dark tone glass reinforced concrete
- D. Roof plant louvred metal screen
- E. Double glazed panel
- F. Metal louvred door to match dark tone panel
- G. Dark warm brown colour patterned metal panel
- H. Light tone rustic brickwork
- I. Dark warm brown colour metal balustrade
- J. Dark warm brown colour tilt and turn double glazed window
- K. Dark warm brown colour metal frame window with patterned metal panels
- L. Double glazed door
- M. Light warm tone glass reinforced concrete banding





#### OFFICE:

1. Red multi textured brick
2. Precast concrete banding, colour to match red brickwork
3. Double glazed door
4. Double glazed opening into existing facade
5. Double glazed rooflight/window
6. Bronze colour metal balustrade
7. 1 hour fire rated double glazed window
8. London stock brick to match existing brickwork
9. Louvres to match brickwork

#### HOTEL/AFFORDABLE BLOCK:

- A. Dark warm brown colour metal frame double glazed windows
- B. Light warm tone glass reinforced concrete
- C. Dark tone glass reinforced concrete
- D. Roof plant louvred metal screen
- E. Double glazed panel
- F. Metal louvred door to match dark tone panel
- G. Dark warm brown colour patterned metal panel
- H. Light tone rustic brickwork
- I. Dark warm brown colour metal balustrade
- J. Dark warm brown colour tilt and turn double glazed window
- K. Dark warm brown colour metal frame window with patterned metal panels
- L. Double glazed door
- M. Light warm tone glass reinforced concrete banding







#### OFFICE:

1. Red multi textured brick
2. Precast concrete banding, colour to match red brickwork
3. Double glazed door
4. Double glazed opening into existing facade
5. Double glazed rooflight/window
6. Bronze colour metal balustrade
7. 1 hour fire rated double glazed window
8. London stock brick to match existing brickwork
9. Louvres to match brickwork

#### HOTEL/AFFORDABLE BLOCK:

- A. Dark warm brown colour metal frame double glazed windows
- B. Light warm tone glass reinforced concrete
- C. Dark tone glass reinforced concrete
- D. Roof plant louvred metal screen
- E. Double glazed panel
- F. Metal louvred door to match dark tone panel
- G. Dark warm brown colour patterned metal panel
- H. Light tone rustic brickwork
- I. Dark warm brown colour metal balustrade
- J. Dark warm brown colour tilt and turn double glazed window
- K. Dark warm brown colour metal frame window with patterned metal panels
- L. Double glazed door
- M. Light warm tone glass reinforced concrete banding





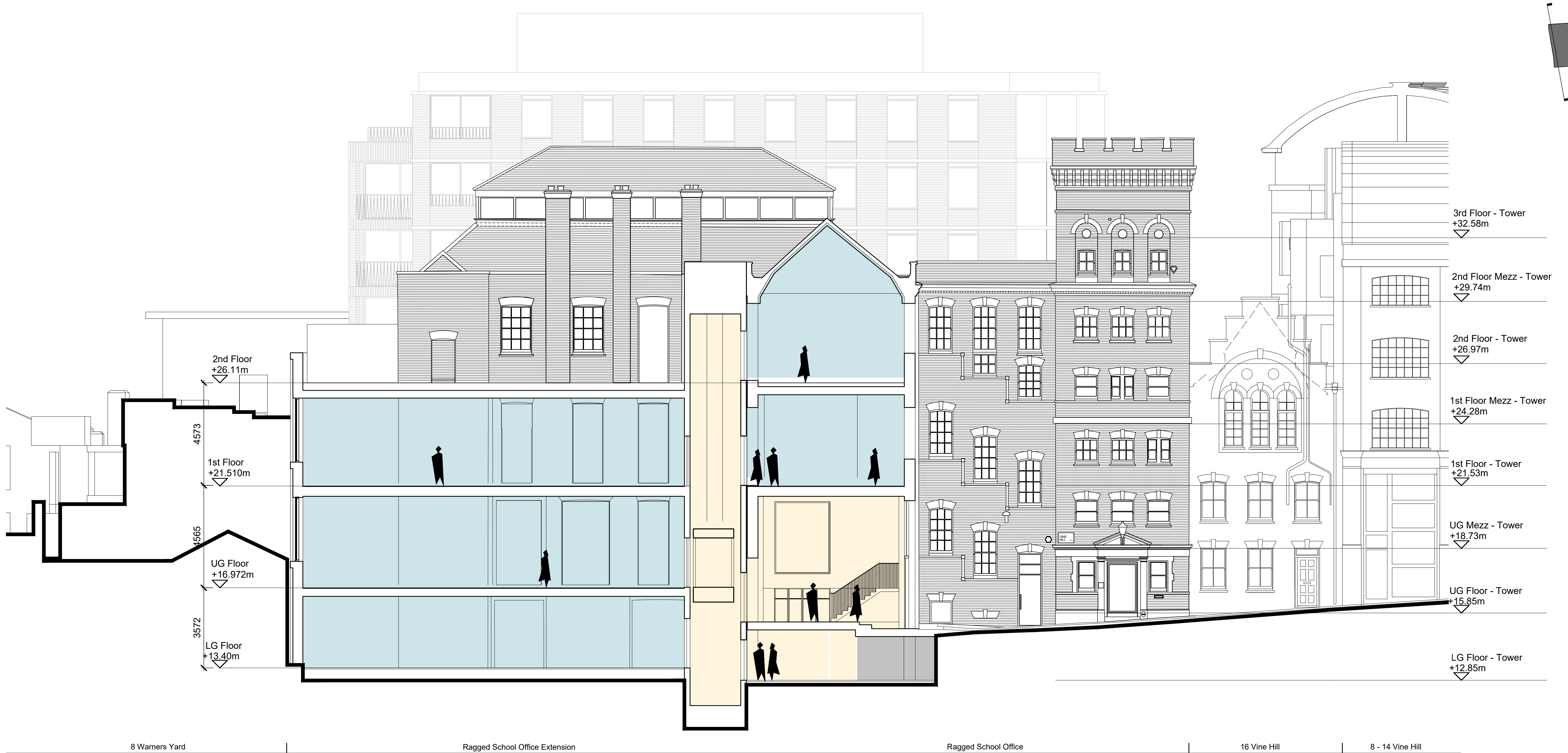
#### OFFICE:

1. Red multi textured brick
2. Precast concrete banding, colour to match red brickwork
3. Double glazed door
4. Double glazed opening into existing facade
5. Double glazed rooflight/window
6. Bronze colour metal balustrade
7. 1 hour fire rated double glazed window
8. London stock brick to match existing brickwork
9. Louvres to match brickwork
10. Charred Larch timber plant screen

#### HOTEL/AFFORDABLE BLOCK:

- A. Dark warm brown colour metal frame double glazed windows
- B. Light warm tone glass reinforced concrete
- C. Dark tone glass reinforced concrete
- D. Roof plant louvred metal screen
- E. Double glazed panel
- F. Metal louvred door to match dark tone panel
- G. Dark warm brown colour patterned metal panel
- H. Light tone rustic brickwork
- I. Dark warm brown colour metal balustrade
- J. Dark warm brown colour tilt and turn double glazed window
- K. Dark warm brown colour metal frame window with patterned metal panels
- L. Double glazed door
- M. Light warm tone glass reinforced concrete banding





GENERAL NOTES:

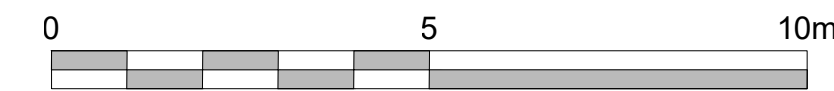
B	OFFICE SECTION AMENDED TO INCLUDE PLANT ENCLOSURE	SJM	SJM	14.08.20
A	MEP ENCLOSURE REDUCED	MM	PL	12.02.20
rev	description	drawn	auth	date

DO NOT SCALE OFF THIS DRAWING © LEACH RHODES WALKER 2001

LeachRhodesWalker  
Architects

info@lrw.co.uk | www.lrw.co.uk  
50 Dearmans Place Manchester M3 5LH  
Manchester London Bucharest  
+44 (0)161 833 0211 +44 (0)207 993 1363 +40 (21)650 4026

client			
CLERKENWELL LIFESTYLE UK			
project			
VINE HILL			
project no		drawing no	
8060		L(00)120	
rev		B	
description -			
PROPOSED SECTION A-A			
scale		date drawn	
1:100@ A1		07.01.20	
drawn by		authorised by	
MM		PL	
purpose of issue			
<input type="radio"/> planning <input type="radio"/> building regn <input type="radio"/> tender <input type="radio"/> comment <input type="radio"/> approval <input type="radio"/> construction			





## GENERAL NOTES:

B	LEVELS AMENDED TO OMIT RAISED FLOOR FROM UG & 1ST FLOORS			SJM	SJM	14.08.20
	rev	description	drawn	auth	date	
A	MEP ENCLOSURE REDUCED			MM	PL	12.02.20

DO NOT SCALE OFF THIS DRAWING © LEACH RHODES WALKER 2001

**LeachRhodesWalker**  
Architects

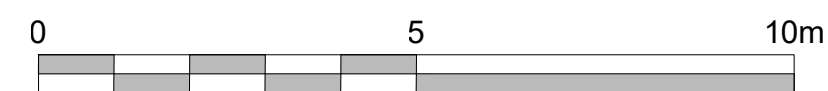
info@lrw.co.uk | www.lrw.co.uk  
50 Dearmans Place Manchester M3 5LH  
**Manchester** +44 (0)161 833 0211 **London** +44 (0)207 993 1363 **Bucharest** +40 (21)650 4026

client CLERKENWELL LIFESTYLE UK		
project VINE HILL		
project no 8060	drawing no L(00)121	rev B
description - PROPOSED SECTION B-B		
scale 1:100@ A1	date drawn 07.01.20	drawn by MM
authorised by PL		
purpose of issue planning <input type="radio"/> building regs <input type="radio"/> tender <input type="radio"/> comment <input type="radio"/> approval <input type="radio"/> construction <input type="radio"/>		





12 Rosebery Avenue Offices    12 Rosebery Avenue service route    Ragged School Office    Courtyard    Hotel Block    Eyre Street Hill



GENERAL NOTES:

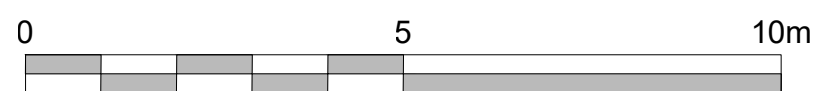
B		LEVELS AMENDED TO OMIT RAISED FLOOR FROM UG & 1ST FLOORS	SJM	SJM	14.08.20
rev	description	drawn	auth	date	

DO NOT SCALE OFF THIS DRAWING © LEACH RHODES WALKER 2001

LeachRhodesWalker  
Architects

info@lrw.co.uk | www.lrw.co.uk  
50 Dearmans Place Manchester M3 5LH  
Manchester London Bucharest  
+44 (0)161 833 0211 +44 (0)207 993 1363 +40 (0)21 650 4026

client			
CLERKENWELL LIFESTYLE UK			
project			
VINE HILL			
project no	drawing no	rev	
8060	L(00)122	B	
description -			
PROPOSED SECTION C-C			
scale	date drawn	drawn by	authorised by
1:100 @ A1	07.01.20	MM	PL
purpose of issue			
<input type="radio"/> planning <input type="radio"/> building regs <input type="radio"/> tender <input type="radio"/> comment <input type="radio"/> approval <input type="radio"/> construction <input type="radio"/>			



## GENERAL NOTES:

rev	description	drawn	auth	date
D	LEVELS AMENDED TO OMIT RAISED FLOOR FROM UG & 1ST FLOORS	SJM	SJM	14.08.20

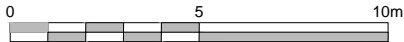
LeachRhodesWalker  
Architects

info@lrw.co.uk | www.lrw.co.uk  
50 Dearmans Place Manchester M3 5LH

Manchester London Bucharest  
+44 (0)161 833 0211 +44 (0)207 993 1363 +44 (0)21 650 4026

client				CLERKENWELL LIFESTYLE UK			
project				VINE HILL			
project no		drawing no		rev			
8060		L(00)123				D	
description -							
PROPOSED SECTION D-D							
scale		date drawn		drawn by		authorised by	
1:100@ A1		07.01.20		MM		PL	
				check/issue			
purpose of issue							
planning <input type="radio"/> building regs <input type="radio"/> tender <input type="radio"/> comment <input type="radio"/> approval <input type="radio"/> construction <input type="radio"/>							





## GENERAL NOTES:

rev	description	mm	PL	12.02.20
A	MEP ENCLOSURE REDUCED			

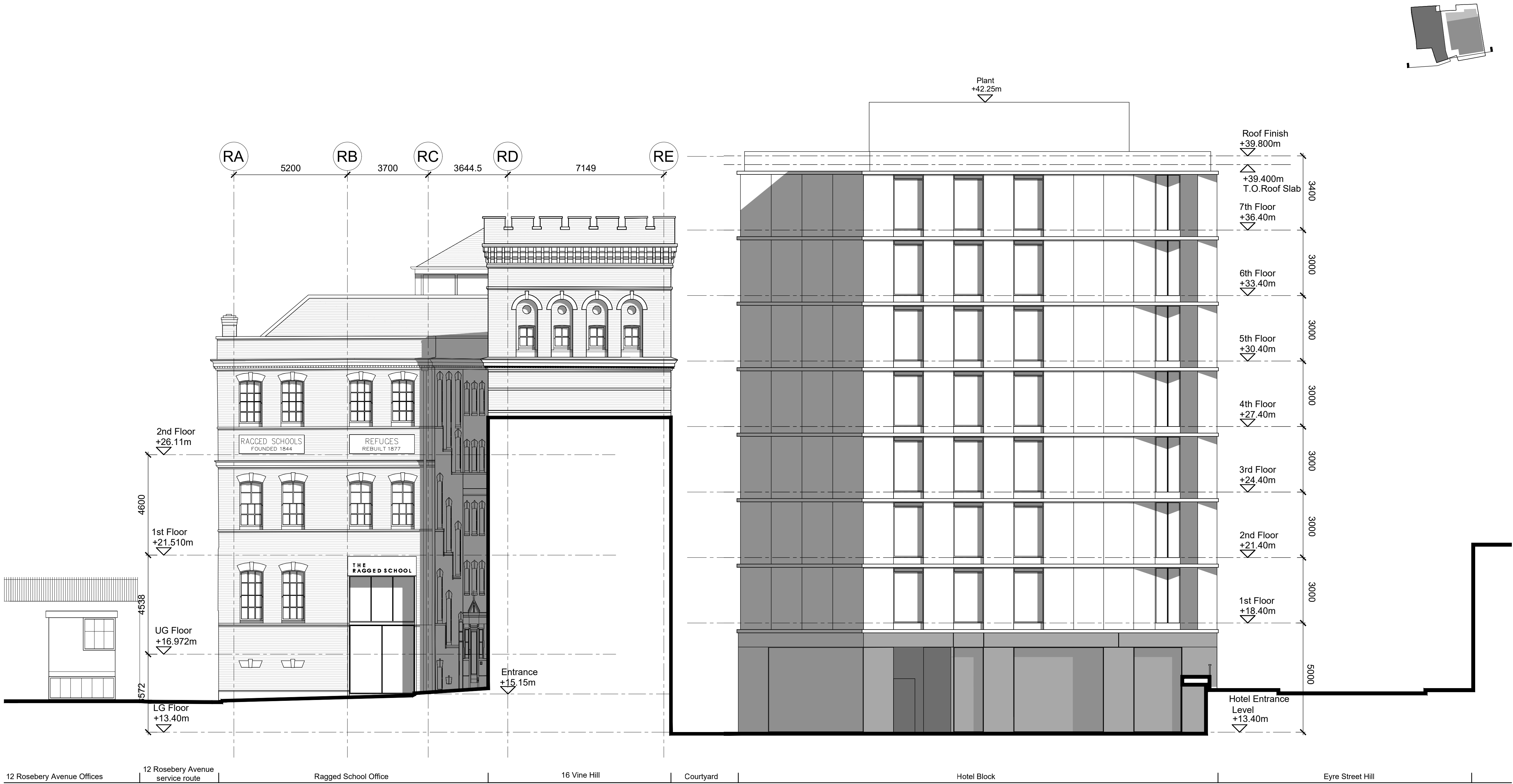
DO NOT SCALE OFF THIS DRAWING

© LEACH RHODES WALKER 2001

**LeachRhodesWalker**  
Architects

info@lrw.co.uk | www.lrw.co.uk  
50 Dearmans Place Manchester M3 5LH  
Manchester London Bucharest  
+44 (0)161 833 0211 +44 (0)207 993 1363 +40 (21)650 4026

client CLERKENWELL LIFESTYLE UK		
project VINE HILL		
project no 8060	drawing no L(00)124	rev B
description - PROPOSED SECTION E-E		
scale 1:100 @ A1	date drawn 07.01.20	drawn by MM
purpose of issue planning <input type="radio"/> building regs <input type="radio"/> tender <input type="radio"/> comment <input type="radio"/> approval <input type="radio"/> construction <input type="radio"/>		authorised by PL



## GENERAL NOTES:

C	LEVELS AMENDED TO OMIT RAISED FLOOR FROM UG & 1ST FLOORS	SJM	SJM	14.08.20
B	UPDATED PLANT ROOM	OM	PL	18.02.20
A	MEP ENCLOSURE REDUCED	MM	PL	12.02.20
rev	description	drawn	auth	date

DO NOT SCALE OFF THIS DRAWING © LEACH RHODES WALKER 2001

**LeachRhodesWalker**  
Architects

info@lrw.co.uk | www.lrw.co.uk  
50 Dearmans Place Manchester M3 5LH  
**Manchester** **London** **Bucharest**  
+44 (0)161 833 0211 +44 (0)207 993 1363 +40 (21)650 4026

ent			
CLERKENWELL LIFESTYLE UK			
object			
VINE HILL			
project no	drawing no		rev
8060	L(00)125		C
description -			
PROPOSED SOUTH ELEVATION			
scale	date drawn	drawn by	authorised by
1:100 @ A1	31.01.20	MS	PL
to be used in the following way: <input type="checkbox"/> J100, J101, J2, J3, J4, J5, J6, J7, J8, J9, J10, J11, J12, J13, J14, J15, J16, J17, J18, J19, J20, J21, J22, J23, J24, J25, J26, J27, J28, J29, J30, J31, J32, J33, J34, J35, J36, J37, J38, J39, J40, J41, J42, J43, J44, J45, J46, J47, J48, J49, J50, J51, J52, J53, J54, J55, J56, J57, J58, J59, J60, J61, J62, J63, J64, J65, J66, J67, J68, J69, J70, J71, J72, J73, J74, J75, J76, J77, J78, J79, J80, J81, J82, J83, J84, J85, J86, J87, J88, J89, J90, J91, J92, J93, J94, J95, J96, J97, J98, J99, J100, J101, J102, J103, J104, J105, J106, J107, J108, J109, J110, J111, J112, J113, J114, J115, J116, J117, J118, J119, J120, J121, J122, J123, J124, J125, J126, J127, J128, J129, J130, J131, J132, J133, J134, J135, J136, J137, J138, J139, J140, J141, J142, J143, J144, J145, J146, J147, J148, J149, J150, J151, J152, J153, J154, J155, J156, J157, J158, J159, J160, J161, J162, J163, J164, J165, J166, J167, J168, J169, J170, J171, J172, J173, J174, J175, J176, J177, J178, J179, J180, J181, J182, J183, J184, J185, J186, J187, J188, J189, J190, J191, J192, J193, J194, J195, J196, J197, J198, J199, J200, J201, J202, J203, J204, J205, J206, J207, J208, J209, J210, J211, J212, J213, J214, J215, J216, J217, J218, J219, J220, J221, J222, J223, J224, J225, J226, J227, J228, J229, J230, J231, J232, J233, J234, J235, J236, J237, J238, J239, J240, J241, J242, J243, J244, J245, J246, J247, J248, J249, J250, J251, J252, J253, J254, J255, J256, J257, J258, J259, J260, J261, J262, J263, J264, J265, J266, J267, J268, J269, J270, J271, J272, J273, J274, J275, J276, J277, J278, J279, J280, J281, J282, J283, J284, J285, J286, J287, J288, J289, J290, J291, J292, J293, J294, J295, J296, J297, J298, J299, J300, J301, J302, J303, J304, J305, J306, J307, J308, J309, J310, J311, J312, J313, J314, J315, J316, J317, J318, J319, J320, J321, J322, J323, J324, J325, J326, J327, J328, J329, J330, J331, J332, J333, J334, J335, J336, J337, J338, J339, J340, J341, J342, J343, J344, J345, J346, J347, J348, J349, J350, J351, J352, J353, J354, J355, J356, J357, J358, J359, J360, J361, J362, J363, J364, J365, J366, J367, J368, J369, J370, J371, J372, J373, J374, J375, J376, J377, J378, J379, J380, J381, J382, J383, J384, J385, J386, J387, J388, J389, J390, J391, J392, J393, J394, J395, J396, J397, J398, J399, J400, J401, J402, J403, J404, J405, J406, J407, J408, J409, J410, J411, J412, J413, J414, J415, J416, J417, J418, J419, J420, J421, J422, J423, J424, J425, J426, J427, J428, J429, J430, J431, J432, J433, J434, J435, J436, J437, J438, J439, J440, J441, J442, J443, J444, J445, J446, J447, J448, J449, J450, J451, J452, J453, J454, J455, J456, J457, J458, J459, J460, J461, J462, J463, J464, J465, J466, J467, J468, J469, J470, J471, J472, J473, J474, J475, J476, J477, J478, J479, J480, J481, J482, J483, J484, J485, J486, J487, J488, J489, J490, J491, J492, J493, J494, J495, J496, J497, J498, J499, J500, J501, J502, J503, J504, J505, J506, J507, J508, J509, J510, J511, J512, J513, J514, J515, J516, J517, J518, J519, J520, J521, J522, J523, J524, J525, J526, J527, J528, J529, J530, J531, J532, J533, J534, J535, J536, J537, J538, J539, J540, J541, J542, J543, J544, J545, J546, J547, J548, J549, J550, J551, J552, J553, J554, J555, J556, J557, J558, J559, J560, J561, J562, J563, J564, J565, J566, J567, J568, J569, J570, J571, J572, J573, J574, J575, J576, J577, J578, J579, J580, J581, J582, J583, J584, J585, J586, J587, J588, J589, J590, J591, J592, J593, J594, J595, J596, J597, J598, J599, J600, J601, J602, J603, J604, J605, J606, J607, J608, J609, J610, J611, J612, J613, J614, J615, J616, J617, J618, J619, J620, J621, J622, J623, J624, J625, J626, J627, J628, J629, J630, J631, J632, J633, J634, J635, J636, J637, J638, J639, J640, J641, J642, J643, J644, J645, J646, J647, J648, J649, J650, J651, J652, J653, J654, J655, J656, J657, J658, J659, J660, J661, J662, J663, J664, J665, J666, J667, J668, J669, J670, J671, J672, J673, J674, J675, J676, J677, J678, J679, J680, J681, J682, J683, J684, J685, J686, J687, J688, J689, J690, J691, J692, J693, J694, J695, J696, J697, J698, J699, J700, J701, J702, J703, J704, J705, J706, J707, J708, J709, J710, J711, J712, J713, J714, J715, J716, J717, J718, J719, J720, J721, J722, J723, J724, J725, J726, J727, J728, J729, J730, J731, J732, J733, J734, J735, J736, J737, J738, J739, J740, J741, J742, J743, J744, J745, J746, J747, J748, J749, J750, J751, J752, J753, J754, J755, J756, J757, J758, J759, J760, J761, J762, J763, J764, J765, J766, J767, J768, J769, J770, J771, J772, J773, J774, J775, J776, J777, J778, J779, J780, J781, J782, J783, J784, J785, J786, J787, J788, J789, J790, J791, J792, J793, J794, J795, J796, J797, J798, J799, J800, J801, J802, J803, J804, J805, J806, J807, J808, J809, J810, J811, J812, J813, J814, J815, J816, J817, J818, J819, J820, J821, J822, J823, J824, J825, J826, J827, J828, J829, J830, J831, J832, J833, J834, J835, J836, J837, J838, J839, J840, J841, J842, J843, J844, J845, J846, J847, J848, J849, J850, J851, J852, J853, J854, J855, J856, J857, J858, J859, J860, J861, J862, J863, J864, J865, J866, J867, J868, J869, J870, J871, J872, J873, J874, J875, J876, J877, J878, J879, J880, J881, J882, J883, J884, J885, J886, J887, J888, J889, J890, J891, J892, J893, J894, J895, J896, J897, J898, J899, J900, J901, J902, J903, J904, J905, J906, J907, J908, J909, J910, J911, J912, J913, J914, J915, J916, J917, J918, J919, J920, J921, J922, J923, J924, J925, J926, J927, J928, J929, J930, J931, J932, J933, J934, J935, J936, J937, J938, J939, J940, J941, J942, J943, J944, J945, J946, J947, J948, J949, J950, J951, J952, J953, J954, J955, J956, J957, J958, J959, J960, J961, J962, J963, J964, J965, J966, J967, J968, J969, J970, J971, J972, J973, J974, J975, J976, J977, J978, J979, J980, J981, J982, J983, J984, J985, J986, J987, J988, J989, J990, J991, J992, J993, J994, J995, J996, J997, J998, J999, J1000, J1001, J1002, J1003, J1004, J1005, J1006, J1007, J1008, J1009, J1010, J1011, J1012, J1013, J1014, J1015, J1016, J1017, J1018, J1019, J1020, J1021, J1022, J1023, J1024, J1025, J1026, J1027, J1028, J1029, J1030, J1031, J1032, J1033, J1034, J1035, J1036, J1037, J1038, J1039, J1040, J1041, J1042, J1043, J1044, J1045, J1046, J1047, J1048, J1049, J1050, J1051, J1052, J1053, J1054, J1055, J1056, J1057, J1058, J1059, J1060, J1061, J1062, J1063, J1064, J1065, J1066, J1067, J1068, J1069, J1070, J1071, J1072, J1073, J1074, J1075, J1076, J1077, J1078, J1079, J1080, J1081, J1082, J1083, J1084, J1085, J1086, J1087, J1088, J1089, J1090, J1091, J1092, J1093, J1094, J1095, J1096, J1097, J1098, J1099, J1100, J1101, J1102, J1103, J1104, J1105, J1106, J1107, J1108, J1109, J1110, J1111, J1112, J1113, J1114, J1115, J1116, J1117, J1118, J1119, J1120, J1121, J1122, J1123, J1124, J1125, J1126, J1127, J1128, J1129, J1130, J1131, J1132, J1133, J1134, J1135, J1136, J1137, J1138, J1139, J1140, J1141, J1142, J1143, J1144, J1145, J1146, J1147, J1148, J1149, J1150, J1151, J1152, J1153, J1154, J1155, J1156, J1157, J1158, J1159, J1160, J1161, J1162, J1163, J1164, J1165, J1166, J1167, J1168, J1169, J1170, J1171, J1172, J1173, J1174, J1175, J1176, J1177, J1178, J1179, J1180, J1181, J1182, J1183, J1184, J1185, J1186, J1187, J1188, J1189, J1190, J1191, J1192, J1193, J1194, J1195, J1196, J1197, J1198, J1199, J1200, J1201, J1202, J1203, J1204, J1205, J1206, J1207, J1208, J1209, J1210, J1211, J1212, J1213, J1214, J1215, J1216, J1217, J1218, J1219, J1220, J1221, J1222, J1223, J1224, J1225, J1226, J1227, J1228, J1229, J1230, J1231, J1232, J1233, J1234, J1235, J1236, J1237, J1238, J1239, J1240, J1241, J1242, J1243, J1244, J1245, J1246, J1247, J1248, J1249, J1250, J1251, J1252, J1253, J1254, J1255, J1256, J1257, J1258, J1259, J1260, J1261, J1262, J1263, J1264, J1265, J1266, J1267, J1268, J1269, J1270, J1271, J1272, J1273, J1274, J1275, J1276, J1277, J1278, J1279, J1280, J1281, J1282, J1283, J1284, J1285, J1286, J1287, J1288, J1289, J1290, J1291, J1292, J1293, J1294, J1295, J1296, J1297, J1298, J1299, J1300, J1301, J1302, J1303, J1304, J1305, J1306, J1307, J1308, J1309, J1310, J1311, J1312, J1313, J1314, J1315, J1316, J1317, J1318, J1319, J1320, J1321, J1322, J1323, J1324, J1325, J1326, J1327, J1328, J1329, J1330, J1331, J1332, J1333, J1334, J1335, J1336, J1337, J1338, J1339, J1340, J1341, J1342, J1343, J1344, J1345, J1346, J1347, J1348, J1349, J1350, J1351, J1352, J1353, J1354, J1355, J1356, J1357, J1358, J1359, J1360, J1361, J1362, J1363, J1364, J1365, J1366, J1367, J1368, J1369, J1370, J1371, J1372, J1373, J1374, J1375, J1376, J1377, J1378, J1379, J1380, J1381, J1382, J1383, J1384, J1385, J1386, J1387, J1388, J1389, J1390, J1391, J1392, J1393, J1394, J1395, J1396, J1397, J1398, J1399, J1400, J1401, J1402, J1403, J1404, J1405, J1406, J1407, J1408, J1409, J1410, J1411, J1412, J1413, J1414, J1415, J1416, J1417, J1418, J1419, J1420, J1421, J1422, J1423, J1424, J1425, J1426, J1427, J1428, J1429, J1430, J1431, J1432, J1433, J1434, J1435, J1436, J1437, J1438, J1439, J1440, J1441, J1442, J1443, J1444, J1445, J1446, J1447, J1448, J1449, J1450, J1451, J1452, J1453, J1454, J1455, J1456, J1457, J1458, J1459, J1460, J1461, J1462, J1463, J1464, J1465, J1466, J1467, J1468, J1469, J1470, J1471, J1472, J1473, J1474, J1475, J1476, J1477, J1478, J1479, J1480, J1481, J1482, J1483, J1484, J1485, J1486, J1487, J1488, J1489, J1490, J1491, J1492, J1493, J1494, J1495, J1496, J1497, J1498, J1499, J1500, J1501, J1502, J1503, J1504, J1505, J1506, J1507, J1508, J1509, J1510, J1511, J1512, J1513, J1514, J1515, J1516, J1517, J1518, J1519, J1520, J1521, J1522, J1523, J1524, J1525, J1526, J1527, J1528, J1529, J1530, J1531, J1532, J1533, J1534, J1535, J1536, J1537, J1538, J1539, J1540, J1541, J1542, J1543, J1544, J1545, J1546, J1547, J1548, J1549, J1550, J1551, J1552, J1553, J1554, J1555, J1556, J1557, J1558, J1559, J1560, J1561, J1562, J1563, J1564, J1565, J1566, J1567, J1568, J1569, J1570, J1571, J1572, J1573, J1574, J1575, J1576, J1577, J1578, J1579, J1580, J1581, J1582, J1583, J1584, J1585, J1586, J1587, J1588, J1589, J1590, J1591, J1592, J1593, J1594, J1595, J1596, J1597, J1598, J1599, J1600, J1601, J1602, J1603, J1604, J1605, J1606, J1607, J1608, J1609, J1610, J1611, J1612, J1613, J1614, J1615, J1616, J1617, J1618, J1619, J1620, J1621, J1622, J1623, J1624, J1625, J1626, J1627, J1628, J1629, J1630, J1631, J1632, J1633, J1634, J1635, J1636, J1637, J1638, J1639, J1640, J1641, J1642, J1643, J1644, J1645, J1646, J1647, J1648, J1649, J1650, J1651, J1652, J1653, J1654, J1655, J1656, J1657, J1658, J1659, J1660, J1661, J1662, J1663, J1664, J1665, J1666, J1667, J1668, J1669, J1670, J1671, J1672, J1673, J1674, J1675, J1676, J1677, J1678, J1679, J1680, J1681, J1682, J1683, J1684, J1685, J1686, J1687, J1688, J1689, J1690, J1691, J1692, J1693, J1694, J1695, J1696, J1697, J1698, J1699, J1700, J1701, J1702, J1703, J1704, J1705, J1706, J1707, J1708, J1709, J1710, J1711, J1712, J1713, J1714, J1715, J1716, J1717, J1718, J1719, J1720, J1721, J1722, J1723, J1724, J1725, J1726, J1727, J1728, J1729, J1730, J1731, J1732, J1733, J1734, J1735, J1736, J1737, J1738, J1739, J1740, J1741, J1742, J1743, J1744, J1745, J1746, J1747, J1748, J1749, J1750, J1751, J1752, J1753, J1754, J1755, J1756, J1757, J1758, J1759, J1760, J1761, J1762, J1763, J1764, J1765, J1766, J1767, J1768, J1769, J1770, J1771, J1772, J1773, J1774, J1775, J1776, J1777, J1778, J1779, J1780, J1781, J1782, J1783, J1784, J1785, J1786, J1787, J1788, J1789, J1790, J1791, J1792, J1793, J1794, J1795, J1796, J1797, J1798, J1799, J1800, J1801, J1802, J1803, J1804, J1805, J1806, J1807, J1808, J1809, J1810, J1811, J1812, J1813, J1814, J1815, J1816, J1817, J1818, J1819, J1820, J1821, J1822, J1823, J1824, J1825, J1826, J1827, J1828, J1829, J1830, J1831, J1832, J1833, J1834, J1835, J1836, J1837, J1838, J1839, J1840, J1841, J1842, J1843, J1844, J1845, J1846, J1847, J1848, J1849, J1850, J1851, J1852, J1853, J1854, J1855, J1856, J1857, J1858, J1859, J1860, J1861, J1862, J1863, J1864, J1865, J1866, J1867, J1868, J1869, J1870, J1871, J1872, J1873, J1874, J1875, J1876, J1877, J1878, J1879, J1880, J1881, J1882, J1883, J1884, J1885, J1886, J1887, J1888, J1889, J1890, J1891, J1892, J1893, J1894, J1895, J1896, J1897, J1898, J1899, J1900, J1901, J1902, J1903, J1904, J1905, J1906, J1907, J1908, J1909, J1910, J1911, J1912, J1913, J1914, J1915, J1916, J1917, J1918, J1919, J1920, J1921, J1922, J1923, J1924, J1925, J1926, J1927, J1928, J1929, J1930, J1931, J1932, J1933, J1934, J1935, J1936, J1937, J1938, J1939, J1940, J1941, J1942, J1943, J1944, J1945, J1946, J1947, J1948, J1949, J1950, J1951, J1952, J1953, J1954, J1955, J1956, J1957, J1958, J1959, J1960, J1961, J1962, J1963, J1964, J1965, J1966, J1967, J1968, J1969, J1970, J1971, J1972, J1973, J1974, J1975, J1976, J1977, J1978, J1979, J1980, J1981, J1982, J1983, J1984, J1985, J1986, J1987, J1988, J1989, J1990, J1991, J1992, J1993, J1994, J1995, J1996, J1997, J1998, J1999, J2000, J2001, J2002, J2003, J2004, J2005, J2006, J2007, J2008, J2009, J2010, J2011, J2012, J2013, J2014, J2015, J2016, J2017, J2018, J2019, J2020, J2021, J2022, J2023, J2024, J2025, J2026, J2027, J2028, J2029, J2030, J2031, J2032, J2033, J2034, J2035, J2036, J2037, J2038, J2039, J2040, J2041, J2042, J2043, J2044, J2045, J2046, J2047, J2048, J2049, J2050, J2051, J2052, J2053, J2054, J2055, J2056, J2057, J2058, J2059, J2060, J2061, J2062, J2063, J2064, J2065, J2066, J2067, J2068, J2069, J2070, J2071, J2072, J2073, J2074, J2075, J2076, J2077, J2078, J2079, J2080, J2081, J2082, J2083, J2084, J2085, J2086, J2087, J2088, J2089, J2090, J2091, J2092, J2093, J2094, J2095, J2096, J2097, J2098, J2099, J2100, J2101, J2102, J2103, J2104, J2105, J2106, J2107, J2108, J2109, J2110, J2111, J2112, J2113, J2114, J2115, J2116, J2117, J2118, J2119, J2120, J2121, J2122, J2123, J2124, J2125, J2126, J2127, J2128, J2129, J2130, J2131, J2132, J2133, J2134, J2135, J2136, J2137, J2138, J2139, J2140, J2141, J2142, J2143, J2144, J2145, J2146, J2147, J2148, J2149, J2150, J2151, J2152, J2153, J2154, J2155, J2156, J2157, J2158, J2159, J2160, J2161, J2162, J2163, J2164, J2165, J2166, J2167, J2168, J2169, J2170, J2171, J2172, J2173, J2174, J2175, J2176, J2177, J2178, J2179, J2180, J2181, J2182, J2183, J2184, J2185, J2186, J2187, J2188, J2189, J2190, J2191, J2192, J2193, J2194, J2195, J2196, J2197, J2198, J2199, J2200, J2201, J2202, J2203, J2204, J2205			





## GENERAL NOTES:

B	PLANT ROOM ENCLOSURE REVISED	OM	PL	18.02.20
A	MEP ENCLOSURE REDUCED	MM	PL	12.02.20
rev	description	drawn	auth	date

DO NOT SCALE OFF THIS DRAWING

© LEACH RHODES WALKER 2001

**LeachRhodesWalker**  
Architects

info@lrw.co.uk | www.lrw.co.uk  
50 Deamans Place Manchester M3 5LH

**Manchester** **London** **Bucharest**  
+44 (0)161 833 0211 +44 (0)207 993 1363 +40 (21)650 4026

Client CLERKENWELL LIFESTYLE UK		
Project VINE HILL		
Project no 8060	Drawing no L(00)126	Rev B
Description PROPOSED NORTH ELEVATION		
Scale 1:100 @ A1	Date drawn 31.01.20	Drawn by MS
Purpose of issue planning <input type="radio"/> building regs <input type="radio"/> tender <input type="radio"/> comment <input type="radio"/> approval <input type="radio"/> construction <input type="radio"/>		Authorised by PL