
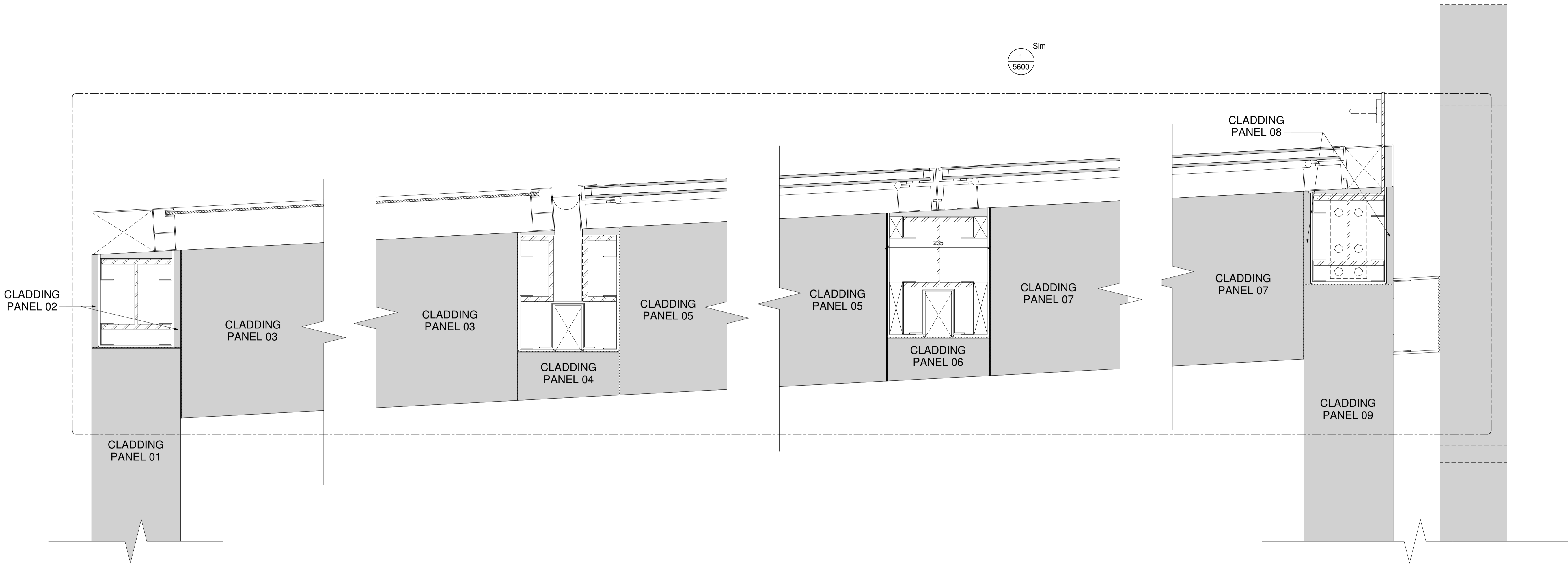
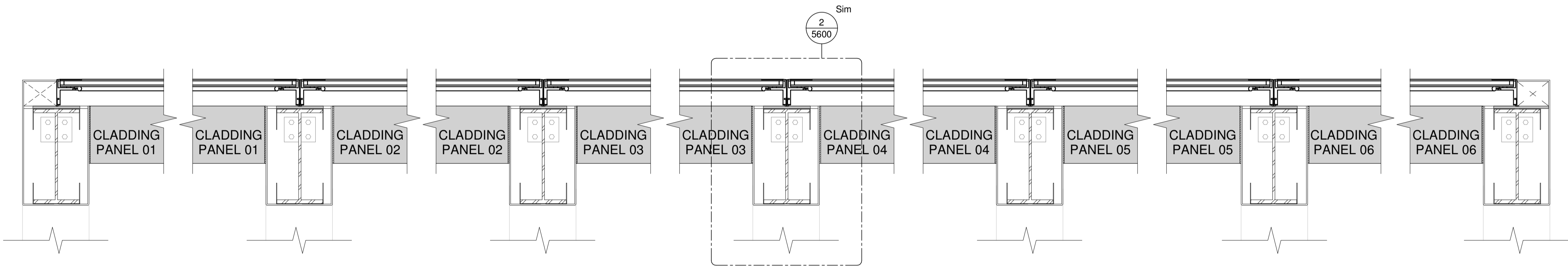


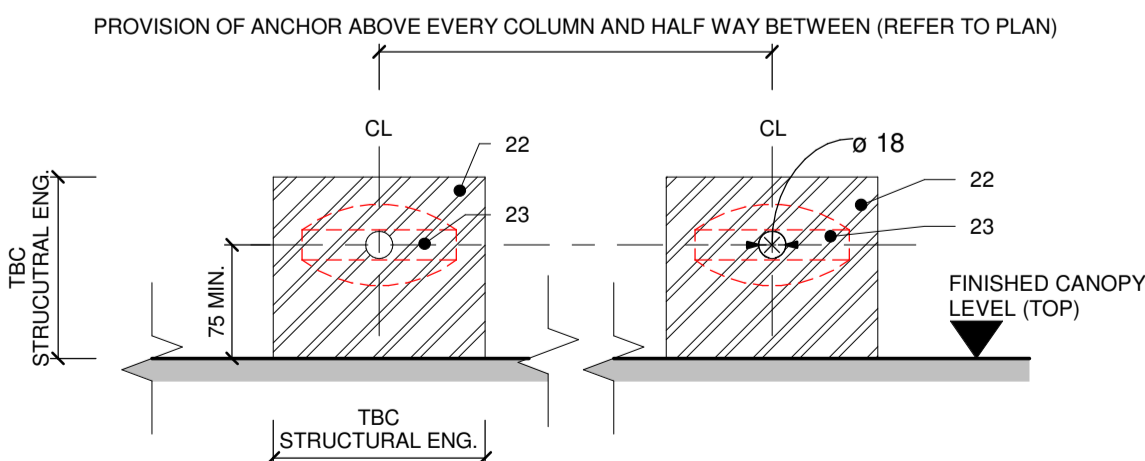
Drawing Status							
Information							
Approval							
Tender							
Contract							
Record Drawing							
Key Diagram							
				Notes		DETAIL ANNOTATION	
				1.	STRUCTURAL COLUMN (REFER TO RAMBOLL SPECIFICATION)		
				2.	STRUCTURAL BEAM(REFER TO RAMBOLL SPECIFICATION)		
				3.	PFC SECTIONS (REFER TO RAMBOLL SPECIFICATION)		
				4.	SPRINKLER PIPEWORK (REFER TO MEP STAGE 4 DOCUMENTATION FOR LAYOUT)		
				5.	ELECTRICAL CABLEING - TO BE WITHIN PROTECTIVE HOUSING FROM WET PIPEWORK (REFER TO MEP STAGE 4 DOCUMENTATION FOR CABLEING ROUTES)		
				6.	DRAINAGE PIPEWORK		
				7.	STEEL "C" STUD (FOR CLADDING APPLICATION)		
				8.	STEEL L1 BRACKET (FOR CLADDING APPLICATION)		
				9.	COLUMN/BEAM CLADDING		
					A. CLADDING TO COMPRISE OF 2x L1 PLATES, MECHANICAL FIXING TO METAL STUDWORK AND PATTERESS		
					B. CLADDING TO COMPRISE OF CONTINUOUS FOLDED U-SHAPE, MECHANICAL FIXINGS TO METAL STUDWORK AND PATTERESS		
				10.	CANOPY GLAZING: 2X10MM TXD W/ SGP LAM. SN 7035, HST. LOW MAINTENANCE WITH BESPOKE CERAMIC FRIT PATTERN FOR SLIP RESISTANCE. GLASS THICKNESS: 110) MM. GLASS UNIT WEIGHT: 6640 KG APPROX. UG VALUE: N/A. LOADING REQUIREMENTS: MAINTENANCE LOADING		
				11.	CANOPY STEEL METAL MESH FLATTENED DIAMOND. PANEL: SKU Range: P01281 PATTERN: 1281F FINISH: MILL FINISH.		
				12.	SIDEWALL SPRINKLER HEAD - MOUNTED TO SIDE CLADDING OF BEAM		
				13.	PATTERESS		
				14.	RECESSED LINEAR LIGHTING		
				15.	MOUNTING BRACKET		
				16.	WEATHER RESISTANT RUBBER GASKET (FOR SECURE FIXING FROM CLADDING TO LIGHT)		
				17.	EXTERNAL FACADE (CAT A INSTALLATION)		
				18.	SPRINKLER CONNECTION TO FACADE - (XXXX) FINISH SLEEVE DETAIL TO RUN FROM REAR COLUMN TO FACADE, WITH SILICONE END CAP CONNECTION		
				19.	WEATHERPROOF BOXING DETAIL		
				20.	SUB-CONTRACTOR TO ALLOW FOR CENTRALISED MECHANICAL FIXING OF GLAZING TO BEAM AND WEATHER PROOFING DETAIL		
				21.	RUBBER GASKET SEAL TO PANEL EDGES (CORNER JUNCTION DETAIL)		
				22.	STEEL L-BRACKET, WELDING TO STRUCTURAL BEAM AND COLUMNS (ADDITIONAL CONCEALED FLANGE WELDING TO BEAMS IF REQUIRED) - 18MM DIA. HOLE SET 75MM MIN. ABOVE FINISHED CANOPY LEVEL FOR STEEL LUG CONNECTION		
				23.	STEEL D-RING ANCHOR- HEAVY DUTY (LATCHWAY 85016 HEAVY DUTY D-RING OR SIMILAR - TO COMPLY WITH BS EN 795 & BS EN 353:1) - REFER TO PLAN (SHEET A-3033) FOR SETTING OUT		
				Rev	Date	Description	By Chk
							
Client: NIKE WORKPLACE DESIGN & CONNECTIVITY							
Project: NIKE - LONDON HQ KINGS CROSS S1 HANDYSIDE STREET							
Title: CANOPY DETAILS							
Scale: As indicated @A1		Date: 06/29/20					
Drawn By: SB		Checked By: MJ					
Drawing No: 0676_BDG_XX_110_DR_A_5601		Revision:					
East Studio Riverside Walk, Sea Containers, 18 Upper ground, London SE1 9PD Tel 020 7559 7400 E: info@bdg-a-d.com W: www.bdg-a-d.com							
NOTE: Dimensions are not to be scaled from this drawing except for planning application purposes only. Contractors must verify all dimensions before commencing. Construction coordination is the responsibility of the principle contractor. Any variations or discrepancies to be reported to BDG architecture+design. manufacturing drawings are to be provided for approval by BDG architecture+design for all bespoke items. This drawing is the property of BDG architecture+design and terms & conditions apply. Full terms & conditions are available on request.							



1 CANOPY DETAIL - PANELISATION DETAIL - SECTION 01
1 : 5



2 CANOPY DETAIL - PANELISATION BREAKDOWN - SECTION 02
1 : 10



3 CANOPY DETAILS - ANCHOR ELEVATION
1 : 5