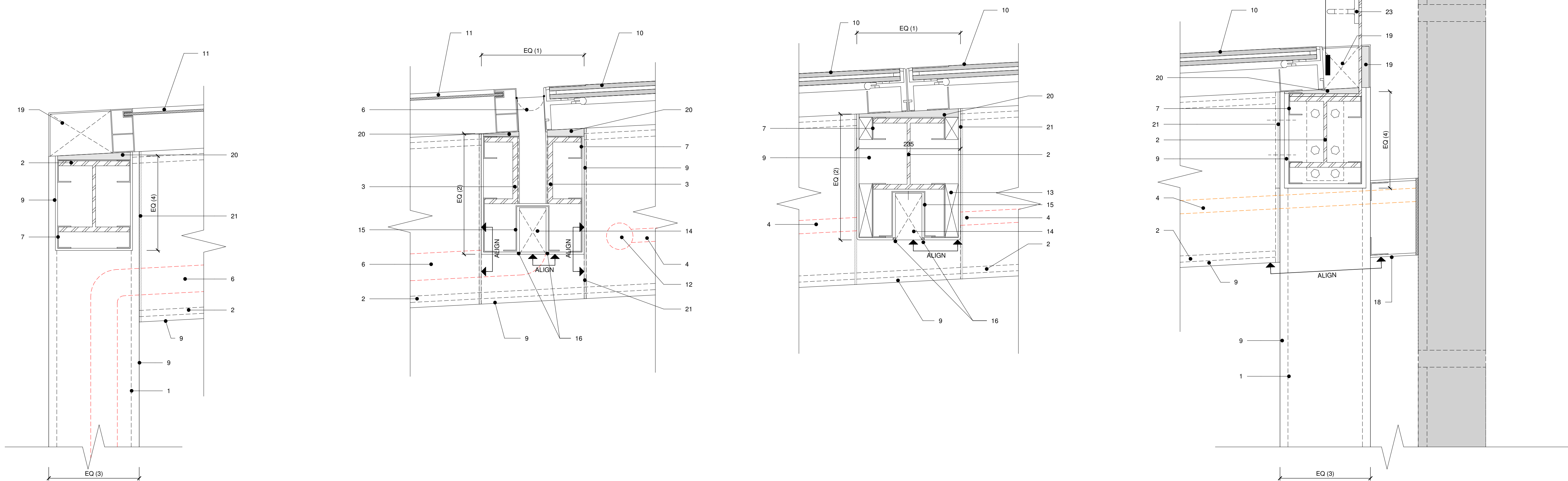



1 : 5



1 : 5

Drawing Status				
Information				
Approval				
Tender				
Contract				
Record Drawing				
Key Diagram				
DETAIL ANNOTATION				
Notes	STRUCTURAL COLUMN (REFER TO RAMBOLL SPECIFICATION)			
2.	STRUCTURAL BEAM(REFER TO RAMBOLL SPECIFICATION)			
3.	PFC SECTIONS (REFER TO RAMBOLL SPECIFICATION)			
4.	SPRINKLER PIPEWORK (REFER TO MEP STAGE 4 DOCUMENTATION FOR LAYOUT)			
5.	ELECTRICAL CABLING - TO BE WITHIN PROTECTIVE HOUSING FROM WET PIPEWORK (REFER TO MEP STAGE 4 DOCUMENTATION FOR CABLING ROUTES)			
6.	DRAINAGE PIPEWORK			
7.	STEEL "C" STUD (FOR CLADDING APPLICATION)			
8.	STEEL "L" BRACKET (FOR CLADDING APPLICATION)			
9.	COLUMN/BEAM CLADDING			
	A. CLADDING TO COMPRISE OF 2x L-PLATES, MECHANICAL FIXING TO METAL STUDWORK AND PATRESS			
	B. CLADDING TO COMPRISE OF CONTINUOUS FOLDED U-SHAPE, MECHANICAL FIXINGS TO METAL STUDWORK AND PATRESS			
10.	CANOPY GLAZING: 2X10MM TxD W/ SGP LAM, SN 70/35, HST, LOW MAINTENANCE WITH BESPOKE CERAMIC FRIT PATTERN FOR SLIP RESISTANCE. GLASS THICKNESS: [10] MM. GLASS UNIT WEIGHT: 6540 KG APPROX. UV VALUE: N/A. LOADING REQUIREMENTS: MAINTENANCE LOADING			
11.	CANOPY STEEL METAL MESH FLATTENED DIAMOND PANEL. SKU RANGE: P01281 PATTERN: 1281F FINISH: MILL FINISH			
12.	SIDEWALL SPRINKLER HEAD - MOUNTED TO SIDE SLIDING OF BEAM			
13.	PATRESS			
14.	RECESSED LINEAR LIGHTING			
15.	MOUNTING BRACKET			
16.	WEATHER RESISTANT RUBBER GASKET (FOR SECURE FIXING FROM CLADDING TO LIGHT)			
17.	EXTERNAL FACADE (CAT A INSTALLATION)			
18.	SPRINKLER CONNECTION TO FACADE - (XXXXX) FINISH SLEEVE DETAIL TO RUN FROM REAR COLUMN TO FACADE, WITH SILICONE END CAP CONNECTION)			
19.	WEATHERPROOF BOXING DETAIL			
20.	SUB-CONTRACTOR TO ALLOW FOR CENTRALISED MECHANICAL FIXING OF GLAZING TO BEAM AND WEATHER PROOFING DETAIL			
21.	RUBBER GASKET SEAL TO PANEL EDGES (CORNER JUNCTION DETAIL)			
22.	STEEL L-BRACKET, WELDING TO STRUCTURAL BEAM AND COLUMNS (ADDITIONAL CONCEALED FLANGE WELDING TO BEAMS IF REQUIRED) - 18MM DIA. HOLE SET 75MM MIN. ABOVE FINISHED CANOPY LEVEL FOR STEEL LUG CONNECTION			
23.	STEEL D-RING ANCHOR- HEAVY DUTY (LATCHWAY 85016 HEAVY DUTY D-RING OR SIMILAR - TO COMPLY WITH BS EN 755 & BS EN 10645) - REFER TO PLAN (SHEET A-3033) FOR SETTING OUT			
T1	10.07.20	STAGE 4 INTERIM SUBMISSION	SB NK	
Rev	Date	Description	By	Chk
				
Client: NIKE WORKPLACE DESIGN & CONNECTIVITY				
Project: NIKE - LONDON HQ KINGS CROSS S1 HANDYSIDE STREET				
Title: CANOPY DETAILS				
Scale: As indicated @A1		Date: 06/24/20		
Drawn By: SB		Checked By: MJ		
Drawing No: 0676_BDG_XX_110_DR_A_5600		Revision: T1		
East Studio Riverside Walk, Sea Containers, 18 Upper ground, London SE1 3RD Tel 020 7559 7400 E: info@bdg-a-d.com W: www.bdg-a-d.com				
NOTE: Dimensions are not to be scaled from this drawing except for planning application purposes only. Contractors must verify all dimensions before commencing. Construction coordination is the responsibility of the principle contractor. Any variations or discrepancies to be reported to BDG architecture+design. Manufacturing drawings are to be reported for approval by BDG architecture+design for all bespoke items. This drawing is the property of BDG architecture+design and terms & conditions apply. Full terms & conditions are available on request.				