

Information:

- OFFICES
- RESTAURANT / BAR
- ROOF TERRACE / GREEN ROOF
- CIRCULATION
- PLANT / SERVICES RISERS
- PHOTOVOLTAIC PANELS / SLATES

PRINCIPLE ENTRANCE

SECONDARY ENTRANCE

F.E. SECONDARY ENTRANCE

PLANNING APPLICATION BOUNDARY

CUSTOMER JOURNEY

DRAWING AND COMMENTS BY OTHERS AS PER ORIGINAL PLANNING APPLICATION

design research studio

The Coal Office
1 Bagley Walk
Kings Cross
London N1C 4PQ

telephone: +44 (0) 20 3848 6100

contact@designresearchstudio.net
www.designresearchstudio.net

General Terms and Conditions as amended by appointment letter of DRS apply. This drawing shows design intent, it is not a construction drawing. Any discrepancies, omissions or errors should be reported to DRS by or through the executive architect. The drawing represents only the available information from the project consultants at the time of issue. This drawing should be read in conjunction with this preamble and the relevant specifications and associated information. This drawing supersedes all previous issues, unless otherwise indicated on the drawing. All quantities and specifications must be checked against the construction drawings and consultant's information by executive architect. Do not scale from this drawing. All dimensions to be checked on site. Do not reproduce drawing. Copyright: design research studio

STANDARDS COMPLIANCE
For projects in the United Kingdom, the executive architect will ensure all design intent supplied shall comply with the relevant BS, EN and IEC requirements, and be capable of installation in accordance with the manufacturer's instructions and all statutory and local authority requirements. DRS is not responsible for checking the design intent against the above requirements. The executive architect, the consultants and manufacturers shall remain responsible for ensuring the accuracy of the information shown on the drawings and that it remains true to the design intent.

Revisions		
Rev.	Date	Notes

job no.: EST002_CDB
project: FISH & COAL BUILDING, KINGS CROSS
dwg. no.: 001
scale: 1:250 @ A3
date: 10/08/2020
issue: PLANNING
drawn by: OTHERS
checked by: _

dwg title:
EXISTING GROUND FLOOR PLAN

The Coal Office
1 Bagley Walk
Kings Cross
London N1C 4PQ

The Coal Office
1 Bagley Walk
Kings Cross
London N1C 4PQ

telephone: +44 (0) 20 3848 6100

contact@designresearchstudio.net
www.designresearchstudio.net

General Terms and Conditions as amended by appointment letter of DRS apply.

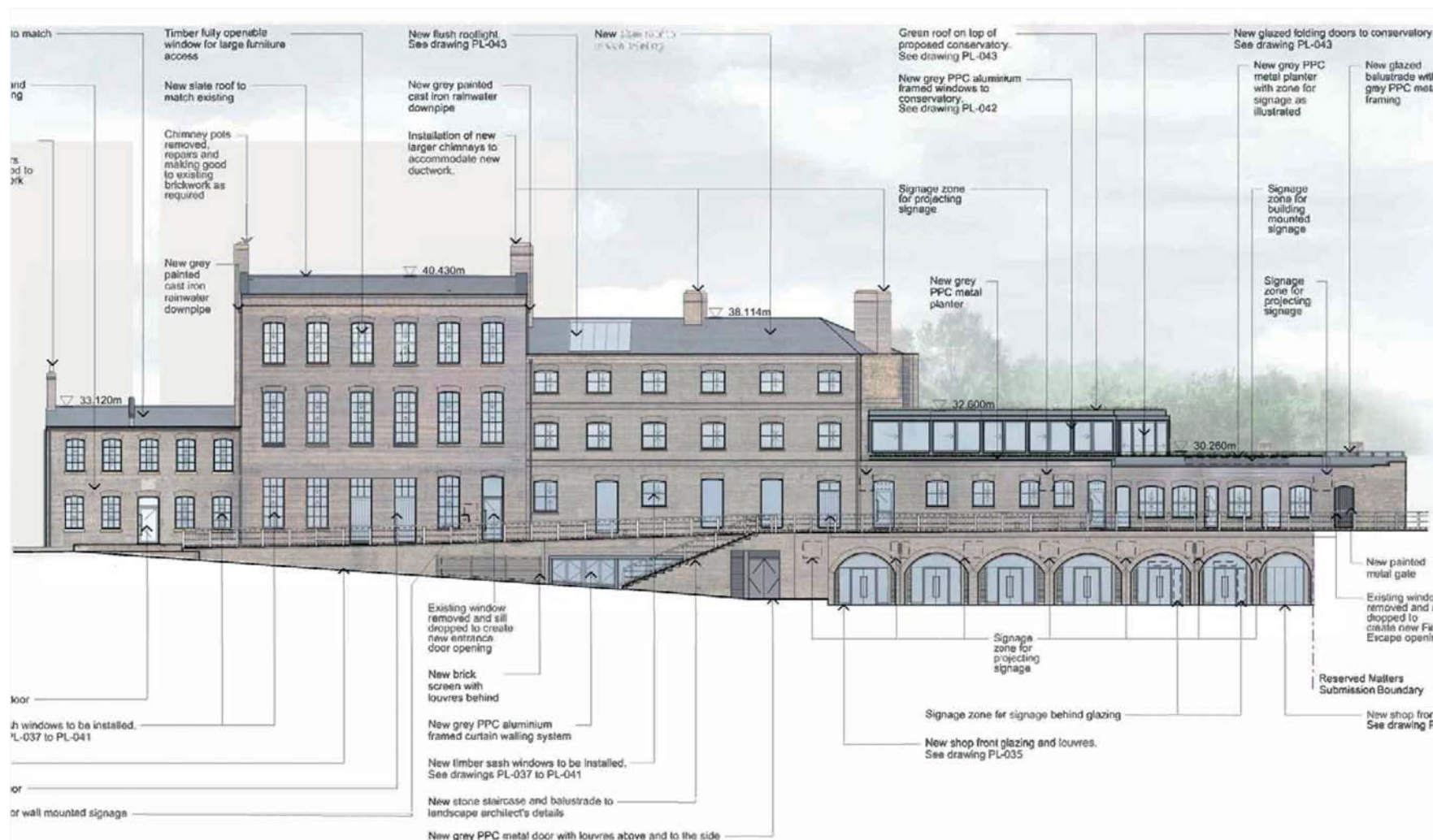
This drawing shows design intent. It is not a construction drawing. Any discrepancies, omissions or errors should be reported to DRS by or through the executive architect. The drawing represents only the available information at the time of preparation of the drawing. This drawing should be read in conjunction with the preamble and the relevant specifications and associated information. This drawing supersedes all previous issues, unless otherwise indicated on the drawing. All quantities and specifications must be checked against the construction drawings and consultant's information by executive architect. Do not scale from this drawing. All dimensions to be checked on site. Do not reproduce drawing. Copyright: design research studio

STANDARDS COMPLIANCE
For projects in the United Kingdom, the executive architect will ensure all design intent supplied shall comply with the relevant BS, EN and IEC requirements, and be capable of installation in accordance with the manufacturers' instructions and all statutory and local authority requirements. DRS is not responsible for checking the design intent against the above requirements. The executive architect, the consultants and manufacturers shall remain responsible for ensuring the accuracy of the information shown on the drawings and that it remains true to the design intent.

[illegible]

job no.: EST002_CDB
project: FISH & COAL BUILDING, KINGSCROSS
dwg. no.: 004
scale: 1:250 @ A3
date: 10/08/2020
issue: PLANNING
drawn by: LKY
checked by: —

dwg title:
EXISTING NORTH ELEVATION



01
1:250

NORTH
ELEVATION



NORTH
ELEVATION

[illegible]

job no.: EST002_CDB
project: FISH & COAL BUILDING, KINGSCROSS
dwg. no.: 200
scale: 1:250 @ A3
date: 10/08/2020
issue: PLANNING
drawn by: LKY
checked by: _

dwg title:
PROPOSED NORTH ELEVATION

Information:

The Coal Office
1 Bagley Walk
Kings Cross
London N1C 4PQ

telephone: +44 (0) 20 3848 6100

contact@designresearchstudio.net
www.designresearchstudio.net

telephone: +44 (0) 20 3848 6100

General Terms and Conditions as amended by appointment letter of DRSP apply. This drawing shows design intent, it is not a construction drawing. Any discrepancies, omissions or errors should be reported to DRSP by or through the executive architect. The drawing represents only the available information from the project consultants at the time of issue. This drawing should be read in conjunction with this preamble and the relevant specifications and associated information. This drawing supersedes all previous issues, unless otherwise indicated on the drawing. All quantities and specifications must be checked against the construction drawings and consultant's information by executive architect. Do not scale from this drawing. All dimensions to be checked on site. Do not reproduce drawing. Copyright design research studio

STANDARDS COMPLIANCE
For projects in the United Kingdom, the executive architect will ensure all design intent supplied shall comply with the relevant BS, EN and IEC requirements, and be capable of installation in accordance with the manufacturers' instructions and all statutory and local authority requirements. DRS is not responsible for checking the design intent against the above requirements. The executive architect, the consultants and manufacturers shall remain responsible for ensuring the accuracy of the information shown on the drawings and that it remains true to the design intent.

job no.: EST002_CDB
project: FISH & COAL BUILDING, KINGSCROSS
dwg. no.: 201
scale: 1:100 @ A3
date: 10/08/2020
issue: PLANNING
drawn by: LKY
checked by: _

dwg title:
PROPOSED NORTH ENLARGED ELEVATION

ATING WITH
H EXISTING.
UT HEAVILY
LAGSTONES

02
501

3600

1070

1000

Cool Drops



01 NORTH
1:100 ENLARGED ELEVATION

Information:

The Coal Office
1 Bagley Walk
Kings Cross
London N1C 4PQ

telephone: +44 (0) 20 3846 6100

contact@designresearchstudio.net
www.designresearchstudio.net

General Terms and Conditions as appended by appointment letter of DRIS apply.
This drawing shows design intent. It is not a construction drawing. Any discrepancies, omissions or errors should be reported to DRIS or by through the executive architect. The client and DRIS shall be responsible for the coordination of the project consultants at the time of issue. This drawing should be read in conjunction with this preamble and the relevant specifications and associated information. This drawing supersedes all previous issues, unless otherwise indicated on this drawing. All quantities and specifications must be checked against the construction drawings and consultant's information by executive architect. Do not scale from this drawing. All dimensions to be checked on site. Do not reproduce without the Copyright design research studio

STANDARDS COMPLIANCE
For projects in the United Kingdom, the executive architect will ensure all design intent supplied shall comply with the relevant BS, EN and EC regulations, and be capable of integration with the relevant building codes, standards, instructions and statutory and local authority requirements. DRIS is not responsible for checking the design intent against the relevant building codes, standards, instructions and manufacturers data. DRIS shall remain responsible for ensuring the accuracy of the information shown on the drawings and that it remains true to the design intent.

telephone: +44 (0) 20 3848 6100

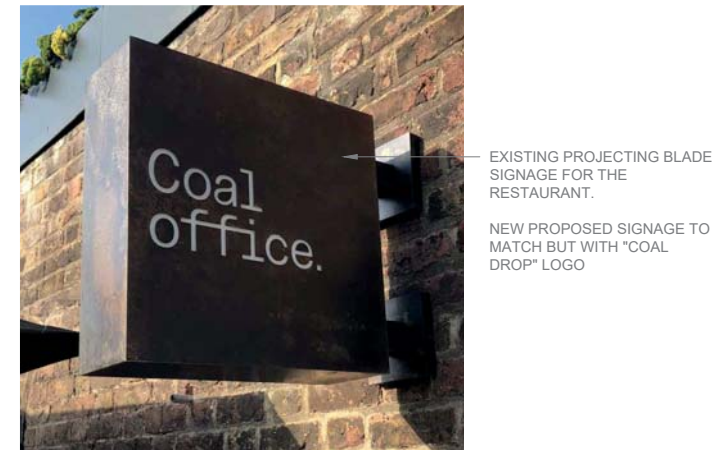
General Terms and Conditions as amended by appointment letter of DR5 apply. This drawing show design intent, it is not a construction drawing. Any discrepancies, omissions or errors should be reported to DRS by or through the executive architect. The drawing represents only the available information from the project consultants at the time of issue. This drawing should be read in conjunction with this preamble and the relevant specifications and associated information. This drawing supersedes all previous issues, unless otherwise indicated on the drawing. All quantities and specifications must be checked against the construction drawings and consultant's information by executive architect. Do not scale from this drawing. All dimensions to be checked on site. Do not reproduce drawing. Copyright design research studio

[illegible]

job no.: EST002_CDB
project: FISH & COAL BUILDING, KINGSCROSS
dwg. no.: 500
scale: 1:10 @ A3
date: 10/08/2020
issue: PLANNING
drawn by: LKY
checked by: _

dwg title:
PROJECTING SIGNAGE DETAIL

dwg title:
PROJECTING SIGNAGE DETAIL



design
research
studio

The Coal Office
1 Bagley Walk
Kings Cross
London N1C 4PQ

telephone: +44 (0) 20 3848 6100

contact@designresearchstudio.net
www.designresearchstudio.net

General Terms and Conditions as amended by appointment letter of DRS apply.
This drawing shows design intent. It is not a construction drawing. Any discrepancies, omissions or errors should be reported to DRS by or through the executive architect. The drawing represents only the available information from the project consultants at the time of issue. This drawing should be read in conjunction with this preamble and the relevant specifications and associated information. This drawing supersedes all previous issues, unless otherwise indicated on the drawing. All quantities and specifications must be checked against the construction drawings and consultants' information by executive architect. Do not scale from this drawing. All dimensions to be checked on site. Do not reproduce drawing. Copyright: design research studio

STANDARDS COMPLIANCE
For projects in the United Kingdom, the executive architect will ensure all design intent supplied shall comply with the relevant BS, EN and IEC requirements, and be capable of installation in accordance with the manufacturer's instructions and all statutory and local authority requirements. DRS is not responsible for checking the design intent against the above requirements. The executive architect, the consultants and manufacturers shall remain responsible for ensuring the accuracy of the information shown on the drawings and that it remains true to the design intent.

Revisions		
Rev.	Date	Notes

job no.: EST002_CDB
project: FISH & COAL BUILDING, KINGSCROSS
dwg. no.: 501
scale: 1:20 @ A3
date: 10/08/2020
issue: PLANNING
drawn by: LKY
checked by: _

dwg title:
NEON SIGNAGE DETAIL

