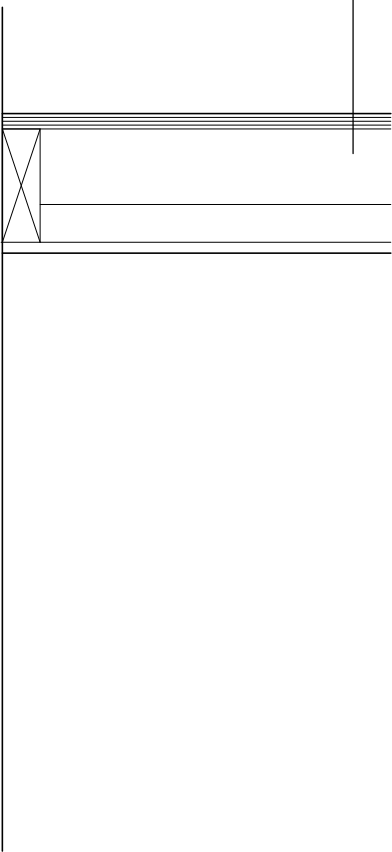


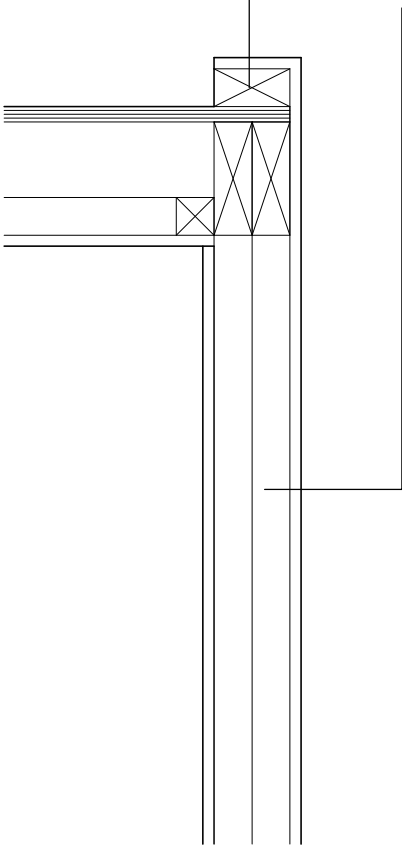
Continuous 150x50mm SW wall plate, plugged and screwed to existing structural wall supporting 150x50mm SW ceiling joists at 400mm c/cs

15mm ply boarding over joists as ceiling capping with 15mm plasterboard taped and jointed soffit 50mm thick continuous interlayer of acoustic mineral quilt



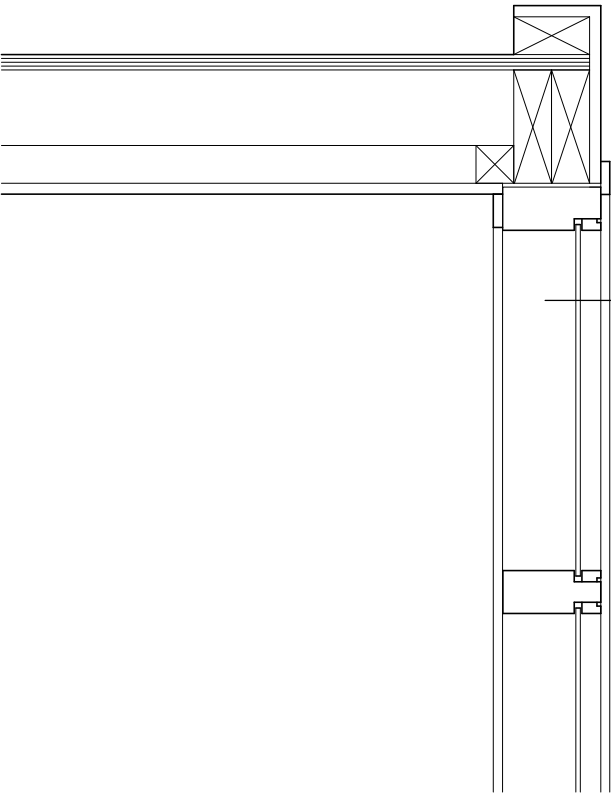
Continuous doubled up 150x50mm SW trimmers, supporting SW ceiling joists with continuous 100x50mm SW capping over

15mm plasterboard taped and jointed finish to 100x50mm SW stud partition with thick continuous interlayer of acoustic mineral quilt



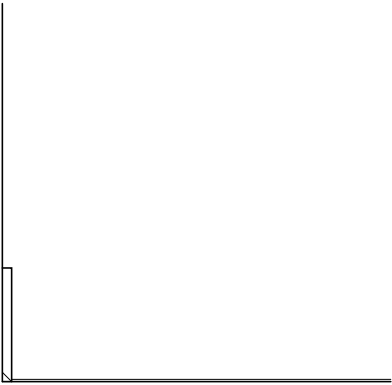
Partition glazed panels of 130x44mm fin SW head, cill and jambs, with 6mm clear float glazing, fixed with 20x15mm HW beading all round.

44x12mm MDF architraves to head and jambs



100x50mm SW sole plate under SW stud partition.

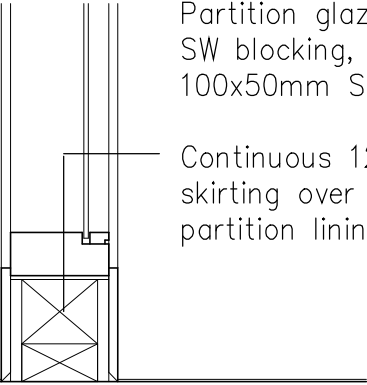
Continuous 12x150mm fin. MDF skirting over 15mm plasterboard partition linings.



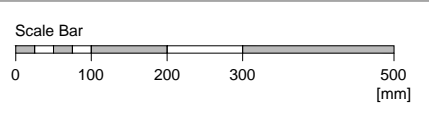
Typical section of proposed partitioning

Partition glazed panels supported on SW blocking, with continuous 100x50mm SW sole plate under.

Continuous 12x150mm fin. MDF skirting over 15mm plasterboard partition linings.



Typical section of proposed glazed panels



Do not scale from this drawing
All dimensions are to be checked on site
Any discrepancies are to be reported immediately to the Architect or Main Contractor

COPYRIGHT © 2020
ALL RIGHTS DESCRIBED IN THE CHAPTER IV OF THE COPYRIGHT
DESIGN AND PATENTS ACT 1988, HAVE BEEN GENERALLY ASSERTED

Notes.

P01	11.08.20	Planning Issue	FM
Rev.	Date	Comment	By

Client
CFBL
87 Holmes Road
London NW5 3AX

Project
CFBL Office Alterations

Drawing
Details
Proposed

Project No.	Drawing No.	Issue	Status
095	020	P01	Planning

Scale	Date	Drawn By	Checked By
1:10@A3	Aug 2020	FM	RB