

Report For:

A2 Dominion

West End Lane

Air Quality Monitoring - July 2020

Status: Final

Date: 07.08.2020

Overview

Continuous particulate monitoring is being carried out using Osiris monitors at two locations on the 156 West End Lane construction site. The locations are WEL/AA01 and WEL/AA02.

For information purposes, the measured pollutant concentrations (raw data) are compared to the appropriate UK Air Quality Objectives over the reporting period. Total suspended particles (TSP) and PM_{2.5} are recorded by the monitors, but there are no trigger values for these.

There were no moderate or high particulate episodes reported during this monthly monitoring period by the London Air Quality Network (LAQN).

The closest LAQN monitoring locations to West End Road are Swiss Cottage – LB Camden (kerbside, 1.1km south-east). The closest Urban Background sites are North Ken FIDAS2 – Kensington and Chelsea (3.5km south west), Bloomsbury – LB Camden (5.3km south-east) and Arsenal – LB Islington (5.8km east). The annual mean was not exceeded at any of the LAQN monitoring sites, with the highest recorded pollutant concentration being 20.6µg/m³ at Islington – Arsenal.

Figure 1 - Monitoring Locations

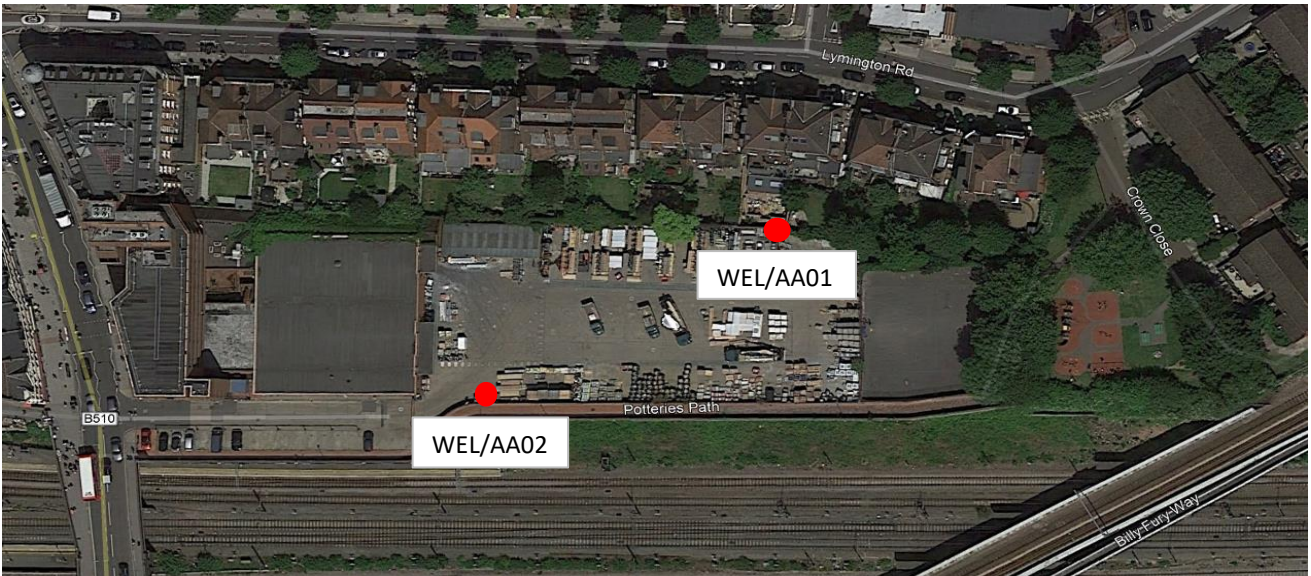


Figure 2 - LAQN Monitoring Locations

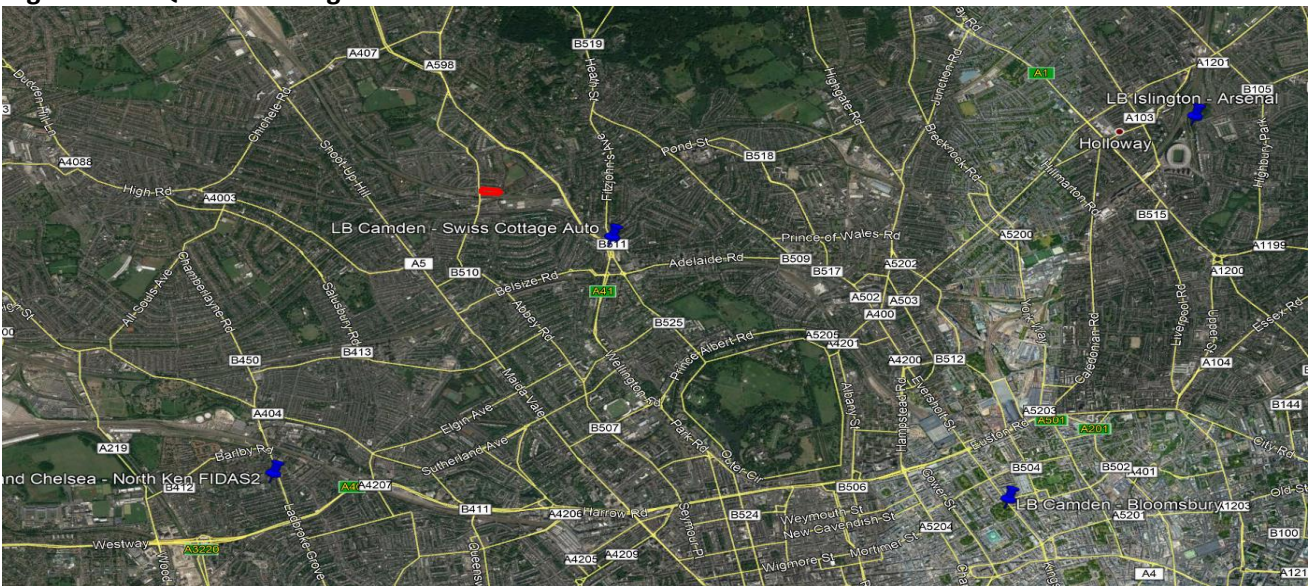


Figure 3 - Position of WEL/AA01



Figure 4 - Position of WEL/AA02



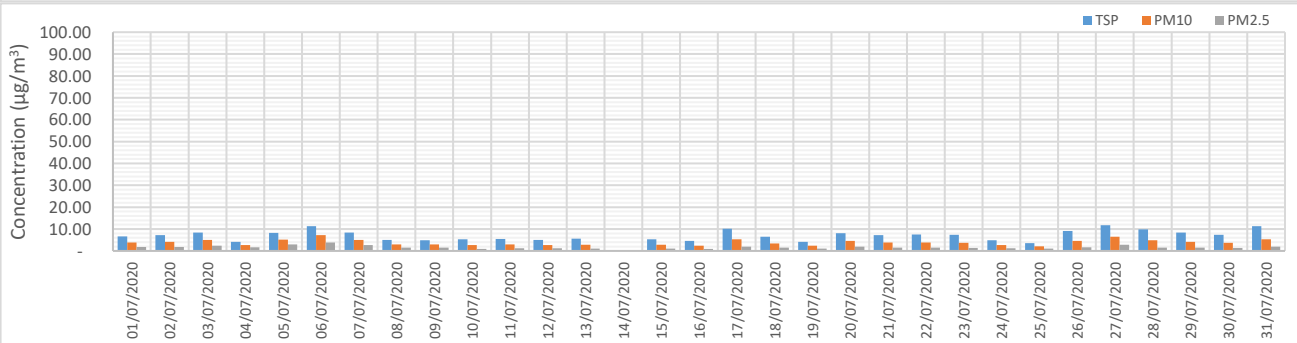
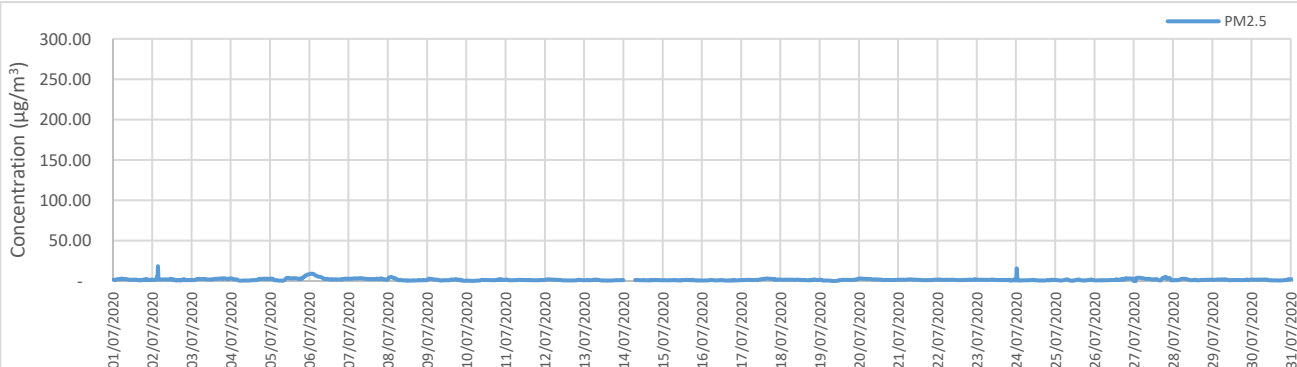
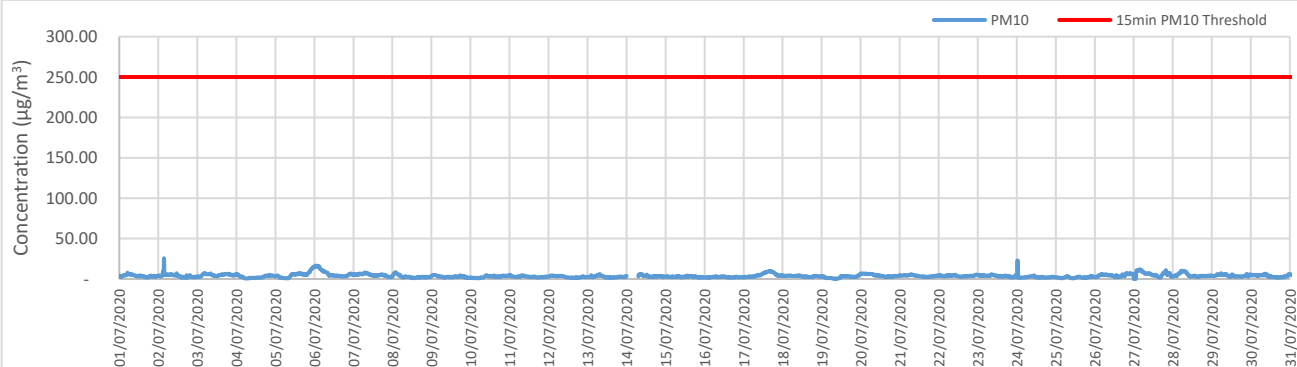
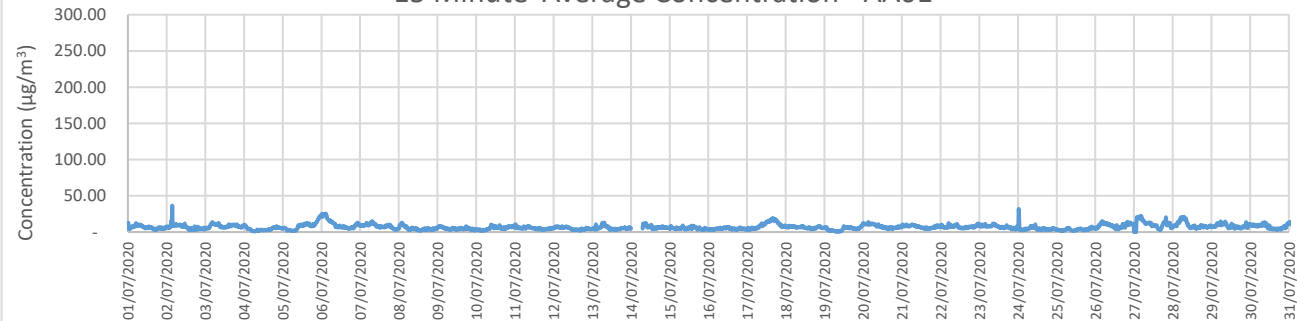
Results Summary

Table 1 - PM₁₀ Results

Monitor	Data Capture	Number of exceedances		Number of reported 24-hr PM ₁₀ alerts in the last 12 months	Comments
		24-hr PM ₁₀	15 min PM ₁₀		
		50µg/m ³	250µg/m ³		
WEL/AA01	95.48%	0	0	0	Limited amount of site works which has included the removal of the main roof finishing and the removal of the cladding from the open shed within the Travis Perkins yard. 30th July - start of cut line for the exclusion zone located to the north of the southern boundary wall. These activities with appropriate mitigation were not anticipated to result in significant emissions of particulates.
WEL/AA02	95.47%	0	0	0	Limited amount of site works which has included the removal of the main roof finishing and the removal of the cladding from the open shed within the Travis Perkins yard. 30th July - start of cut line for the exclusion zone located to the north of the southern boundary wall. These activities with appropriate mitigation were not anticipated to result in significant emissions of particulates.

Worksite:	West End Lane		Location:	AA01
Data Capture:	95.48%			WEL AA01 - Fixed to post on northern boundary
Instrument:	Osiris TNO 4382		Period	Start 01/07/2020 End 01/08/2020
Calibration:	10/03/2020			

15 Minute Average Concentration - AA01



Worksite:	West End Lane		Location:	AA02
Data Capture:	95.47%		WEL AA02 - Fixed to post on southern boundary	
Instrument:	Osiris TNT3707		Period	Start 01/07/2020 End 01/08/2020
Calibration:	20/03/2020			

15 Minute Average Concentration - AA02

