

ACCESS AND SUSTANABILITY  
CYCLE STORAGE DETAILS

Cycle parking spaces have been provided by Sheffield Cycle Stands and the requirement for cycle storage is set out below:

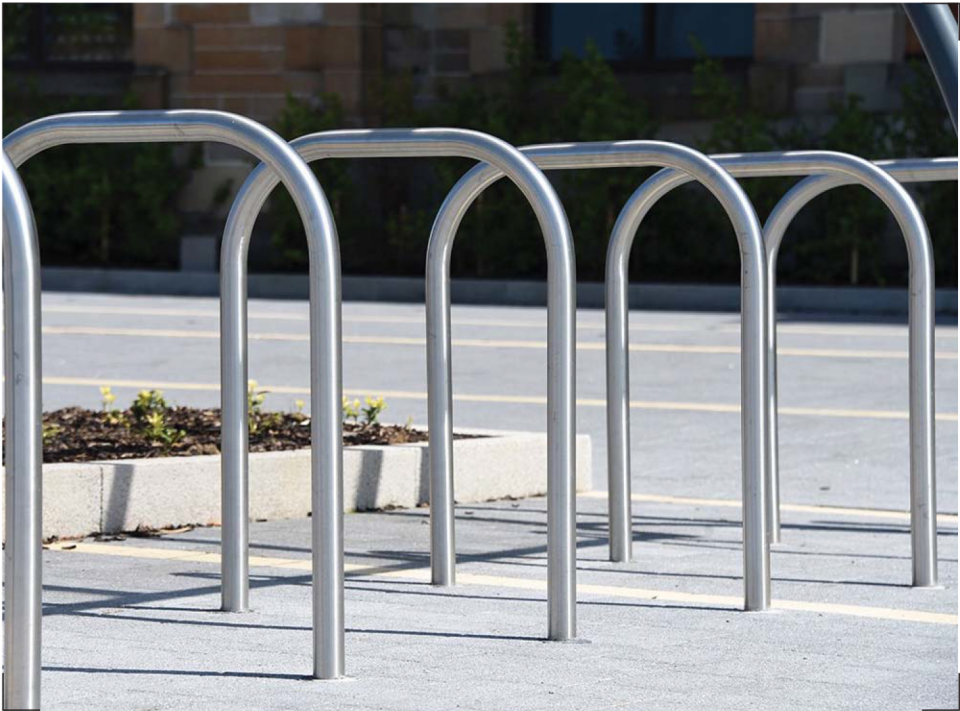
The provision for the number of cycles is in line with the London Plan - Chapter Six 'Cycle Parking'. The plan states that there should be 2 Nos. Cycle spaces for all dwellings including two or more bedrooms. We are, therefore, proposing 4Nos. cycle spaces, which will be provided using a similar Sheffield Cycle Stand product identified below.

Key

- 1. 1 Nos. Stainless Steel 'Sheffield Cycle Stands' by Ollerton to provide 2 Nos. Cycle parking spaces

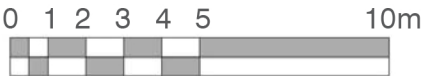
Features of the Proposed Cycle Stand:

- Made form stainless steel material, which is hot dip galvanised and, therefore, provides excellent weathering qualities
- Powder coated finish available in a full range of standard RAL colours
- Manufactured from grade 316L stainless steel, meaning that they offer excellent corrosion resistance
- Require very little maintenance to retain their original contemporary appearance

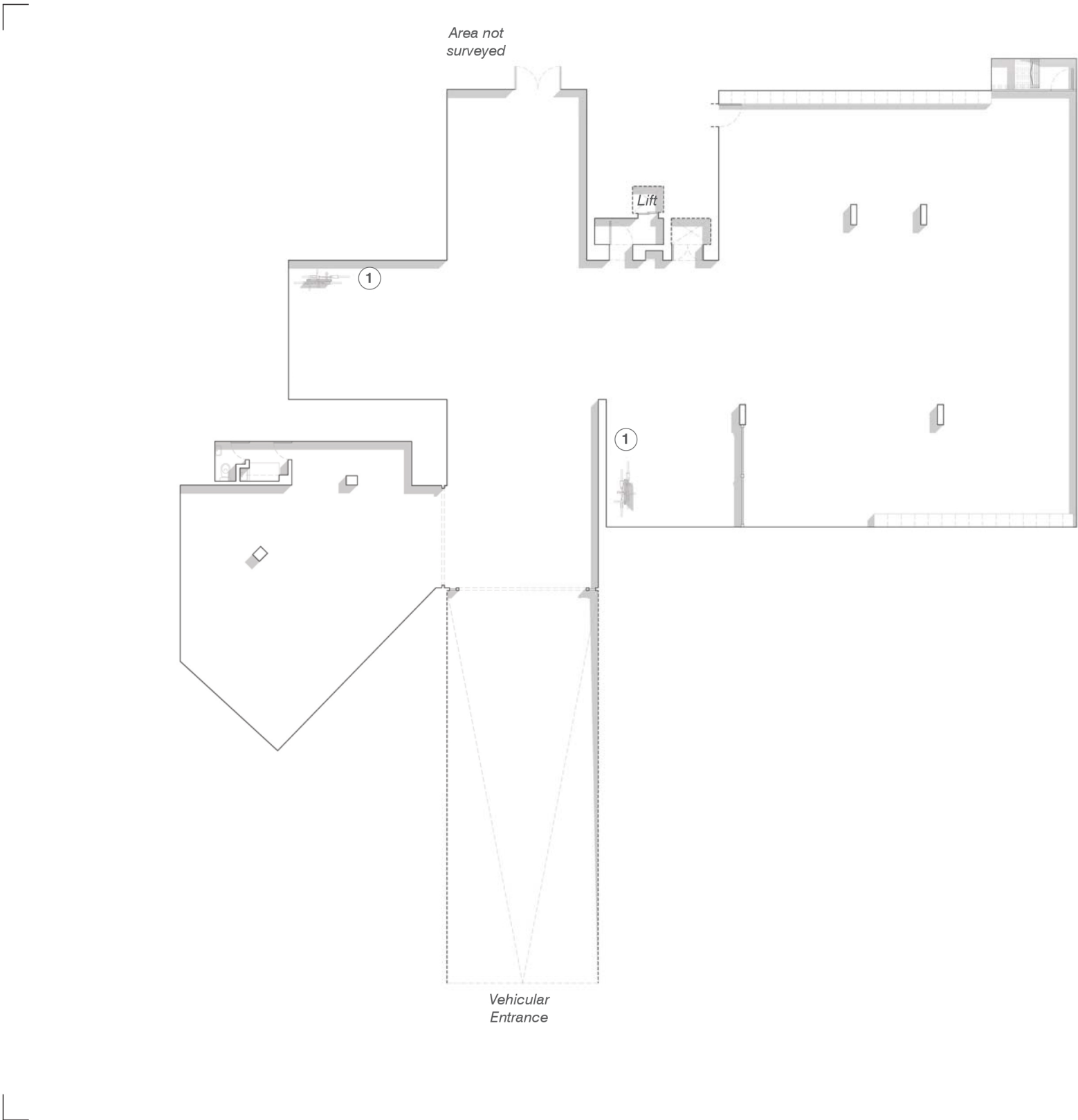


Indicative images above of proposed Cycle Parking System

**BASEMENT PLAN.** DRAWING no. 4000B. 1:200@A3 Revision A



MOUNT TYNDAL. SPANIARDS ROAD. LONDON. NW3 7JH



Existing Basement Plan showing location of Proposed Cycle Parking spaces