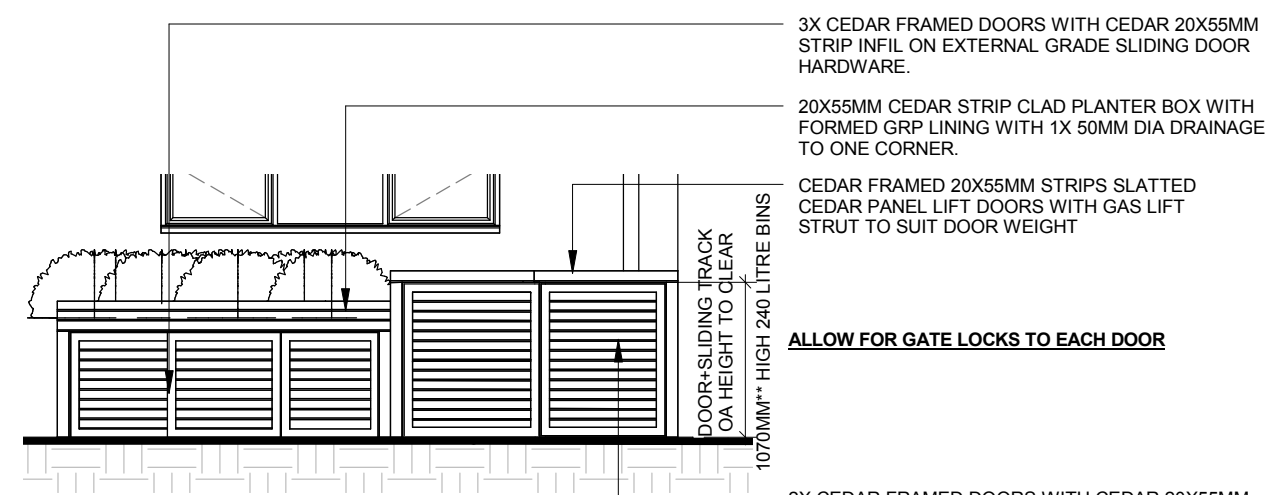


**© COPYRIGHT**  
The copyright in this drawing is vested in oculus architects and no licence or assignment of any kind has been or is granted to any third party whether by provision of copies or originals of the drawings or otherwise unless otherwise agreed in writing.

**FOR ELECTRONIC DATA ISSUE**  
Electronic data drawings are issued as "read only" and should not be interrogated for measurement. All dimensions and levels should be read, only from those values stated in text, on the drawing.

**AREA MEASUREMENT**  
The areas are approximate and can only be verified by a detailed dimensional survey of the completed building. Any decisions to be made on the basis of these conditions, whether as to project viability, pre-letting, lease agreements or the like, should include due allowance for the increases and decreases inherent in the design development and building processes. Figures relate to the built area of the building at the current state of the design and using the Gross External Area (GEA) / Gross Internal Area (GIA) / Net Internal Area (NIA) method of measurement from the Code of Measuring Practice, 8th Edition (RICS Code of Practice). All areas are subject to Town Planning and Conservation Area Consent, and detailed Rights to Light analysis.



3X CEDAR FRAMED DOORS WITH CEDAR 20X55MM STRIP INFIL ON EXTERNAL GRADE SLIDING DOOR HARDWARE.

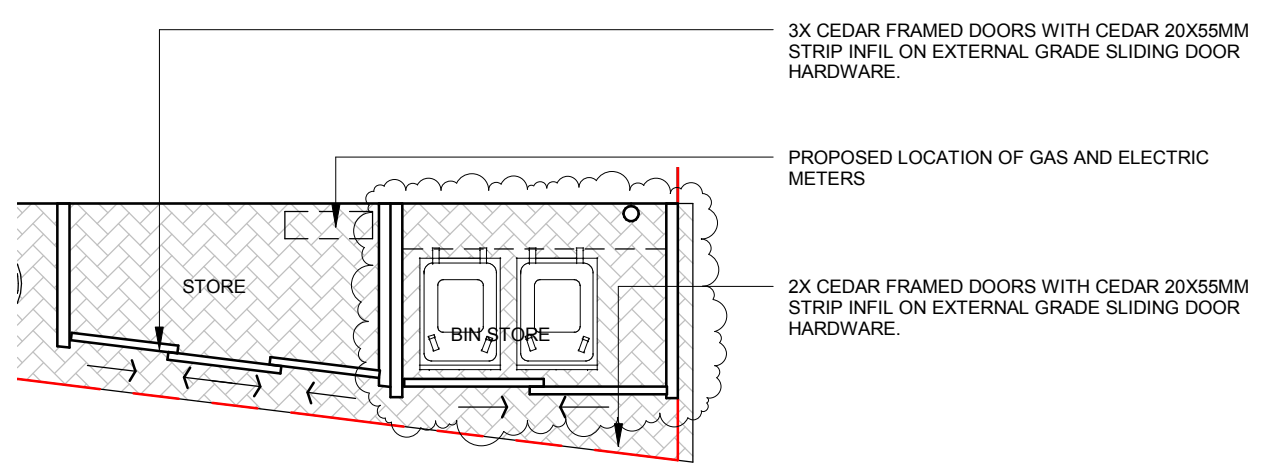
20X55MM CEDAR STRIP CLAD PLANTER BOX WITH FORMED GRP LINING WITH 1X 50MM DIA DRAINAGE TO ONE CORNER.

CEDAR FRAMED 20X55MM STRIPS SLATTED CEDAR PANEL LIFT DOORS WITH GAS LIFT STRUT TO SUIT DOOR WEIGHT

**ALLOW FOR GATE LOCKS TO EACH DOOR**

2X CEDAR FRAMED DOORS WITH CEDAR 20X55MM STRIP INFIL ON EXTERNAL GRADE SLIDING DOOR HARDWARE.

**3** **DETAIL ELEVATION - BIN STORES AND PLANTER BOX**  
1 : 50

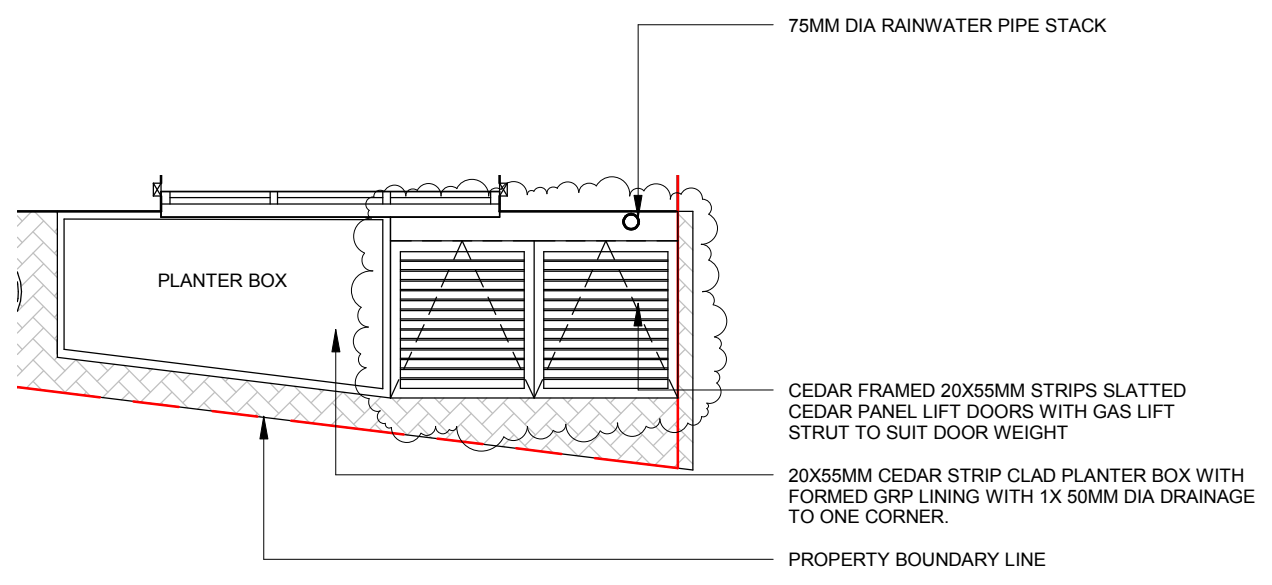


3X CEDAR FRAMED DOORS WITH CEDAR 20X55MM STRIP INFIL ON EXTERNAL GRADE SLIDING DOOR HARDWARE.

PROPOSED LOCATION OF GAS AND ELECTRIC METERS

2X CEDAR FRAMED DOORS WITH CEDAR 20X55MM STRIP INFIL ON EXTERNAL GRADE SLIDING DOOR HARDWARE.

**2** **DETAIL PLAN - BIN STORES AND PLANTER BOX - INDICATIVE LAYOUT**  
1 : 50



75MM DIA RAINWATER PIPE STACK

CEDAR FRAMED 20X55MM STRIPS SLATTED CEDAR PANEL LIFT DOORS WITH GAS LIFT STRUT TO SUIT DOOR WEIGHT

20X55MM CEDAR STRIP CLAD PLANTER BOX WITH FORMED GRP LINING WITH 1X 50MM DIA DRAINAGE TO ONE CORNER.

PROPERTY BOUNDARY LINE

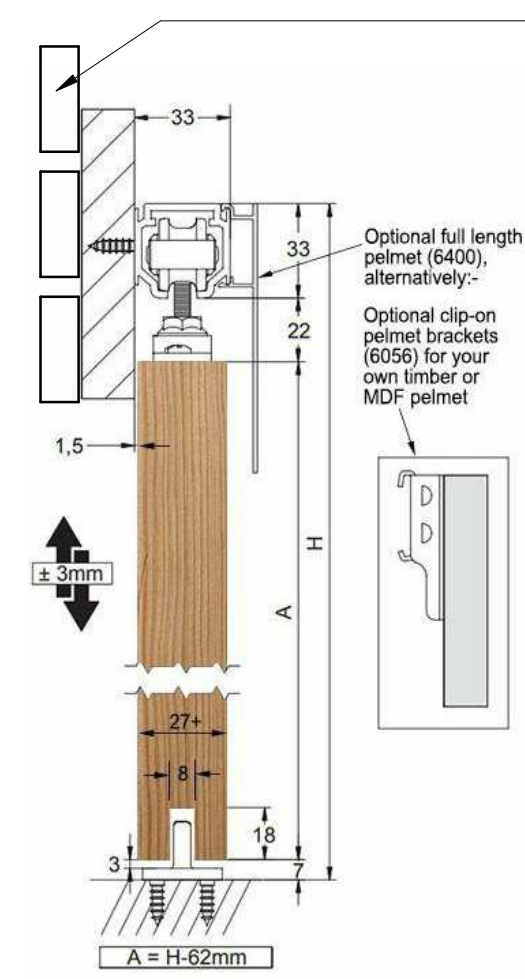
**1** **DETAIL PLAN - BIN STORES AND PLANTER BOX**  
1 : 50

**\*\*CONFIRM 240L BIN DIMENSIONS WITH LB CAMDEN**

**REFERENCE HARDWARES**



LOCKING LONG THROW GATE LOCKS



CLAD TIMBER PELMET WITH 20X55MM CEDAR STRIPS

EXTERNAL GRADE STAINLESS STEEL GRADE 316 SLIDING DOOR TRACK



EXTERNAL GRADE GAS LIFT STRUTS TO SUIT

**REFERENCE VISUALS**



CEDAR FRAMED LIFT DOORS WITH SLATTED CEDAR STRIP INFILS



CEDAR CLAD PLANTER BOX

A	2020.08.13	BINS STORE UPDATE
REV	DATE	AMENDMENT

TITLE  
**20 ALBERT TERRACE MEWS  
LONDON  
NW1 7TA**

**oculus architects Ltd**

155 Regent's Park Road London NW1 8BB  
Chalk Farm www.oarch.co.uk

DRAWING TITLE  
**BIN STORE AND PLANTER BOX  
DETAILS**

SCALE	1 : 50@ A3	DRAWN BY	
DATE	2019.06.26	CHECKED BY	
JOB No.	1080A	DWT	450-105
STAGE		REV.	A
INFORMATION			