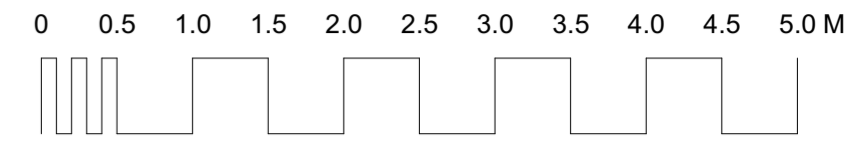
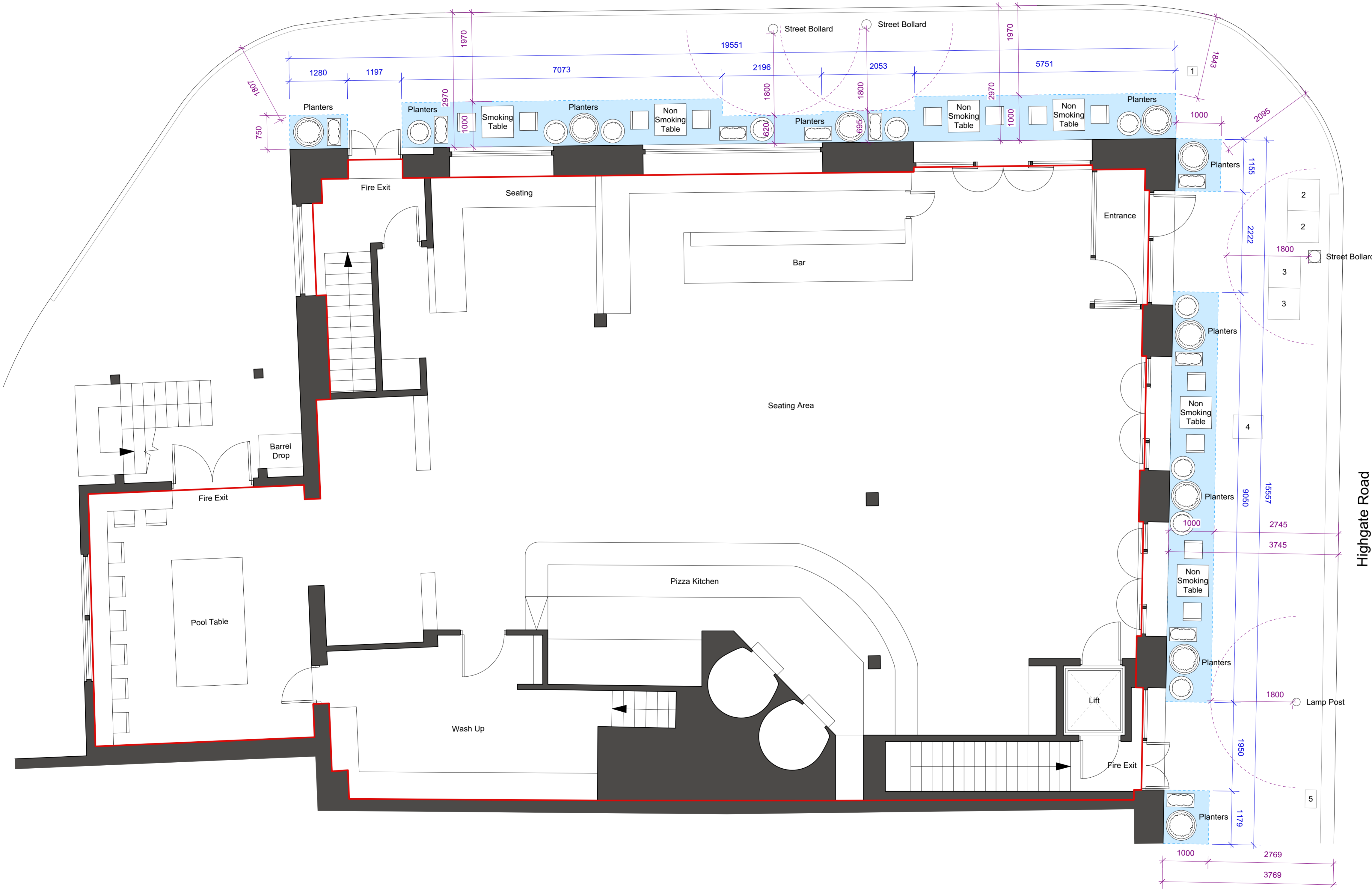


This drawing is the copyright of Axiom Architects. It is for planning application purposes only and may not be reproduced in whole or in part without permission. Drawings lodged for planning approval may be reproduced by the Planning Authority in accordance with the 'Copyright (Material Open to Public Inspection) (Marking of Copies of Plans and Drawings) Order 1990' and must carry the relevant copyright restriction note. Scaling from this drawing should only be carried out from a print at the scale and size specified within the title block. Responsibility for ensuring correct size reproduction remains with the reader.



Sanderson Close



- EXISTING PAVEMENT FEATURES**
1. INSPECTION CHAMBER (WATER) - 210 X 210mm
 2. INSPECTION CHAMBER (FOUL WATER) - 700 X 700mm
 3. INSPECTION CHAMBER (TELEVISION) - 700 X 700mm
 4. INSPECTION CHAMBER (ELECTRICITY) - 520 X 660mm
 5. INSPECTION CHAMBER (WATER) - 250 X 400mm

- KEY**
- Area to be occupied by amenities
 - Table dimensions 700 x 700mm
 - Chair dimensions 400 x 400mm
 - Planters of various sizes
 - Area used for licensable activities

Rev	Date	Description	By	Chk
A	10/08/20	Smoking areas designated.		RM

AXIOM ARCHITECTS
 Aviation House 125 Kingsway London WC2B 6NH
 Tel. 020 7421 8866 www.axiomarchitects.co.uk

Client
 Urban Leisure Group

Project
 Never For Ever
 79 Highgate Road, Kentish Town
 London NW5 1TL

Drawing
 External Furniture Layout

Scale	Status	Date	Drawn	Checked
1:50	Planning	31/07/20	RM	

Drawing No. **5543/L/02** Revision **A**