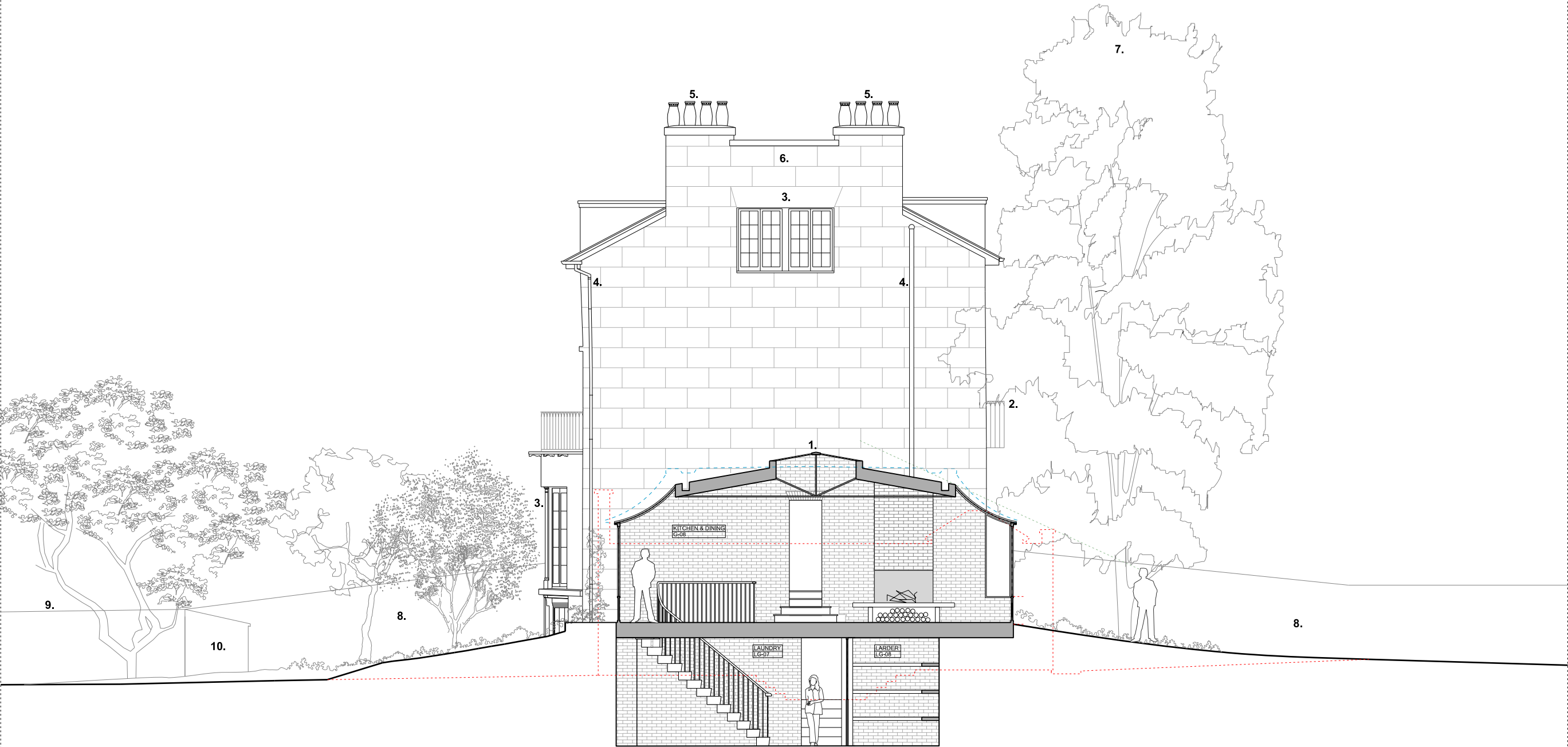


- KEY:
- NEW FABRIC
 - OUTLINE OF EXISTING GARAGE EXTENSION
 - OUTLINE OF PRE-APP SCHEME
 - SIGHT LINES

- SUMMARY OF KEY ALTERATIONS:
- NEW REPLACEMENT EXTENSION
 - REINSTATED CURVED WROUGHT IRON RAILINGS: WITH APPROPRIATE DETAILING.
 - NEW TIMBER FRAMED SINGLE GLAZED WINDOWS OF HISTORICALLY APPROPRIATE DETAILING.
 - EXTERNAL SERVICES IN CAST IRON & ROUTES RATIONALISED.
 - REINSTATED TERRACOTTA CHIMNEY POTS TO MATCH KEATS HOUSE.
 - SCORED RENDER REINSTATED TO MATCH KEATS HOUSE.
 - EXISTING LIME TREE RETAINED & PROTECTED.
 - SIMPLIFIED GARDEN DESIGNS.



NB: ORIGINAL DESIGN & NOTES
BY CHRIS DYSON ARCHITECTS
(PLANNING APPROVAL
REF: 2019/5443/P)

:PLANNING

PROJECT: : 12 KEATS GROVE, HAMPSTEAD, LONDON, NW3 2RN	DRAWING: :KEA_12 007_ ISSUE FOR: PLANNING SCALE: 1:100@A3 1:50@A1 DATE: AUG20	:REVISION :Revision	0 1 2 3 4 Meters	milk:studio 29 REDAN STREET LONDON W14 0AB o2mal@mlkstudio.net w: www.milkstudio.net	 MAX DEWDNEY ARCHITECTS
PROJECT: :KEA_12	DRAWN BY: :CDA	CHECKED BY: :N/A	:EXISTING SECTION A-A - THROUGH KITCHEN EXTENSION		