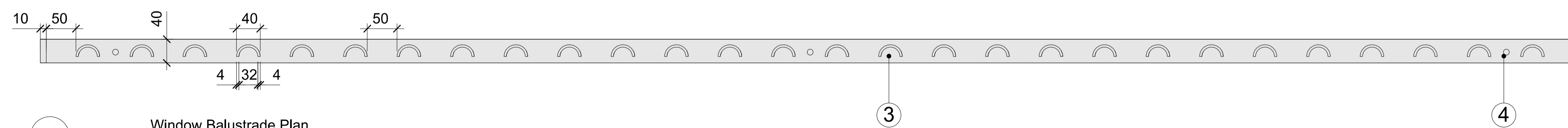
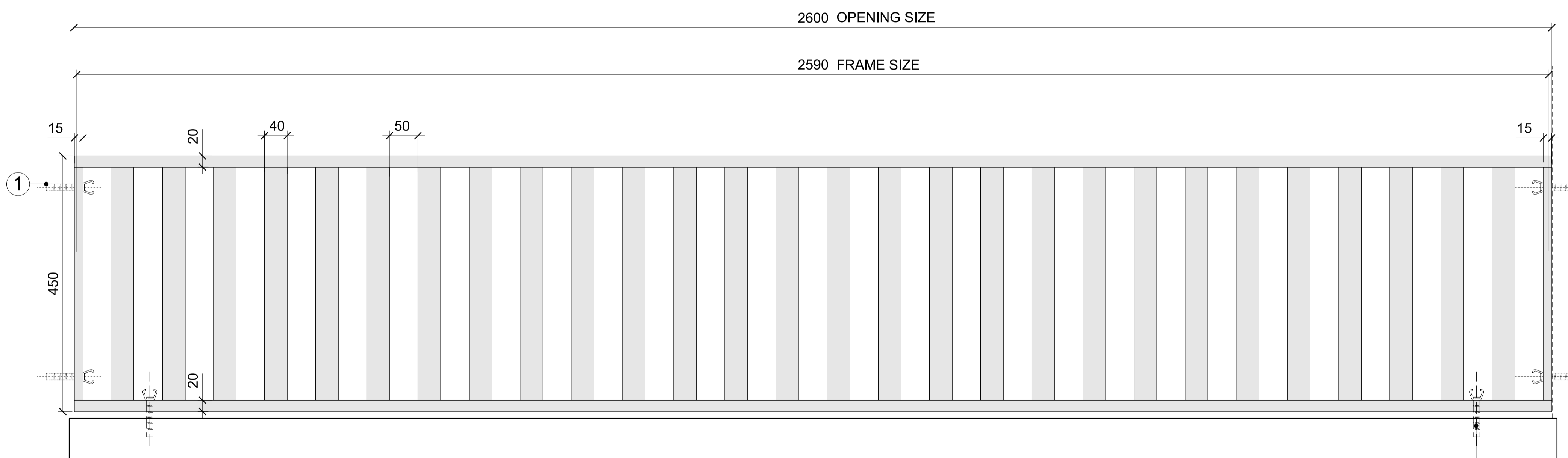
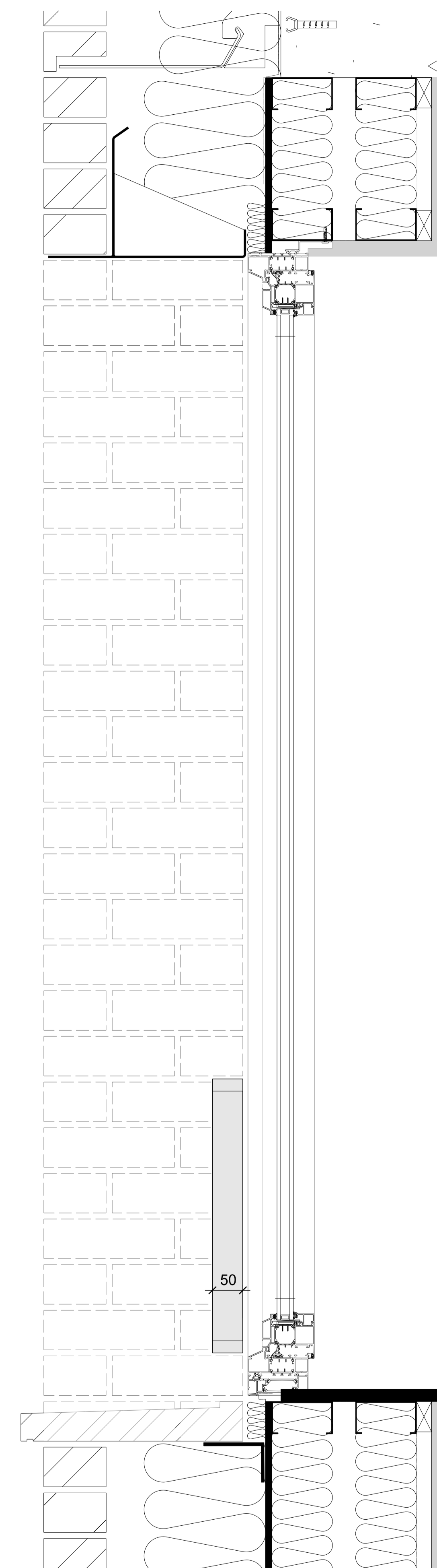
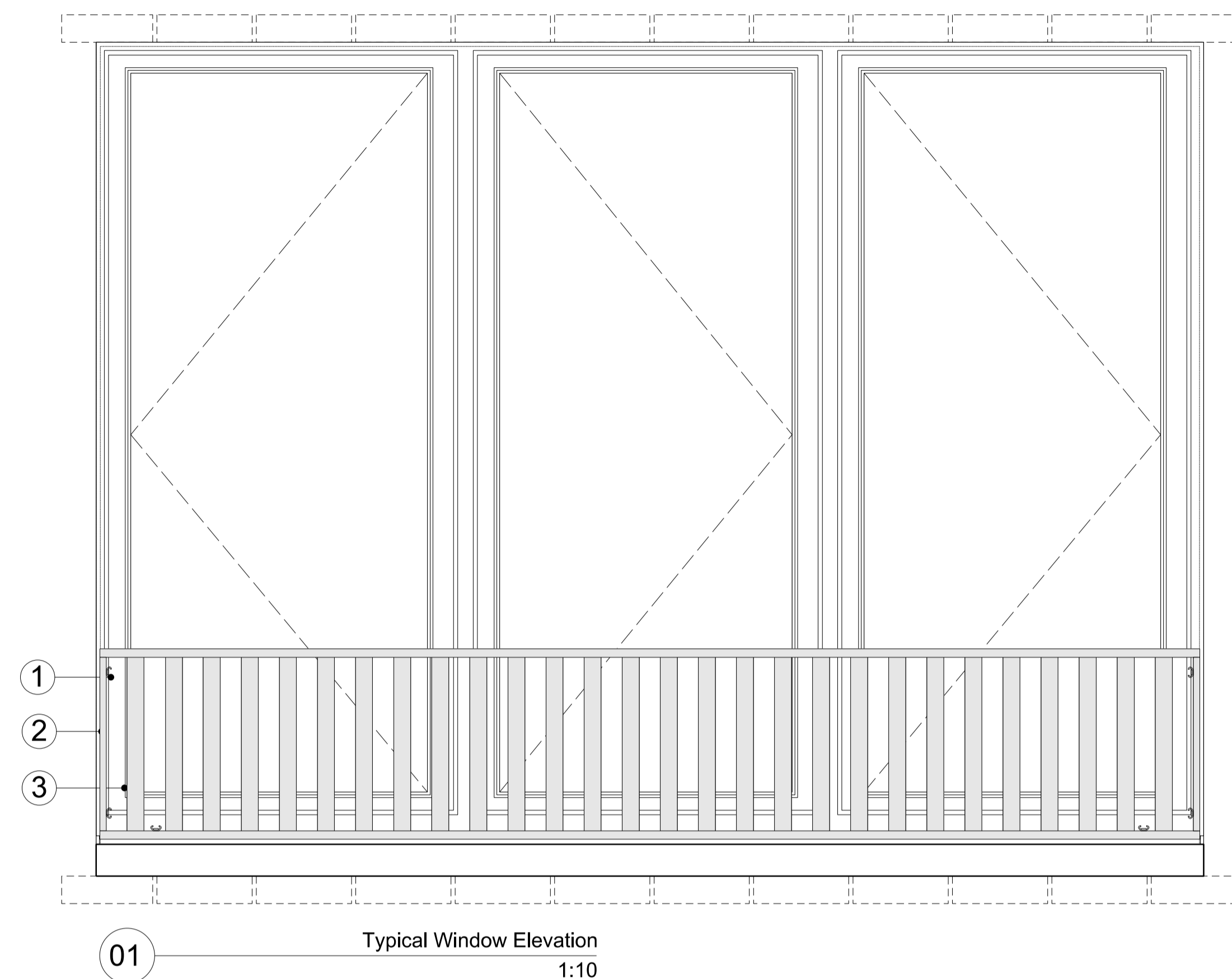


General Notes
 The drawing is copyright of Vabel LTD. All rights reserved. No reproduction in any material form is permitted without consent. Do not scale from this drawing. All dimensions are in mm unless stated otherwise. Dimensions, levels, sizes and location of particulars are to be verified by the contractor on site prior to engaging in works. This drawing may incorporate information from other professionals. Vabel LTD cannot accept responsibility for the integrity and accuracy of such information.
 DO NOT SCALE

General Notes:

1. Side Brackets fixing into brickwork reveal. To be powder coated to match balustrade. Fixing Method to be reviewed by Structural Engineer.
2. 15mm Balustrade End Frame to house balustrade verticals and provide overall frame rigidity. Powder Coated Adapta Crystal Patina RW-8285-XW (Bronze)
3. Vertical Semi-Circular Bronze Effect- Powder Coated Adapta Crystal Patina RW-8285-XW (Bronze)
4. Brackets fixing down into Reconstituted Stone Cill as required to support wider window opening frames



04 Window Balustrade Section

Rev	Date	Reason for Issue	Chk
A	03/08/20	Condition 3	NE

VABEL
LONDON

531 Highgate Studios, 53-79 Highgate Road, London NW5 1TL
 Tel +44 (0)20 7183 6405 Email contact@vabel.co.uk

Project
 18-22 Haverstock Hill, NW3

Title
 Window Balustrade
 Design Intent

Date	Scale @ A1	Drawn	Checked
03/08/20	1:5	MB	NE

Status
 Information

Drawing Number	Revision
AP_XX_S_170	A