







Key

-  Load bearing walls
-  Services / fixed furniture / tanks
-  Modern partition wall and boxing out
-  Floor finish (flag stones to be set aside for reuse)

01 Basement Plan
5000 1:100 @ A3

Scale 1:100 m

Purpose of Issue:
FOR_COMMENT

Notes

- Any dwg format drawing is to be read in conjunction with and at the scale of the accompanying pdf.
- Where colours other than black or grey are used, the drawing must be plotted in colour.
- For status 'C' (Construction) drawings all dimensions are to be checked on site by the contractor, scaling is for Local Authority purposes only.
- Unless otherwise indicated, all dimensions are in millimeters.
- All information on this drawing is to be read in conjunction with the relevant Donald Insall Associates specification and trade contractors' drawings and information by specialists.
- In the event of any discrepancy, please contact us immediately.
- This drawing may contain survey information by others and is to be used solely for the purposes for which it was issued.
- These are uncontrolled documents issued for information purposes only. If you have any queries regarding the drawings, please contact DIA immediately.
- Please note DIA cannot be held responsible for any errors arising from changes made to an uncontrolled dwg file.

© 2019 DONALD INSALL ASSOCIATES LTD

Rev	Date	Dwn	Auth	Revision
2	31-01-20	-	TOB	Cost Estimate
1	27-01-20	JXL	TOB	Revised design
0	24-10-19	EKN	TOB	Initial Issue

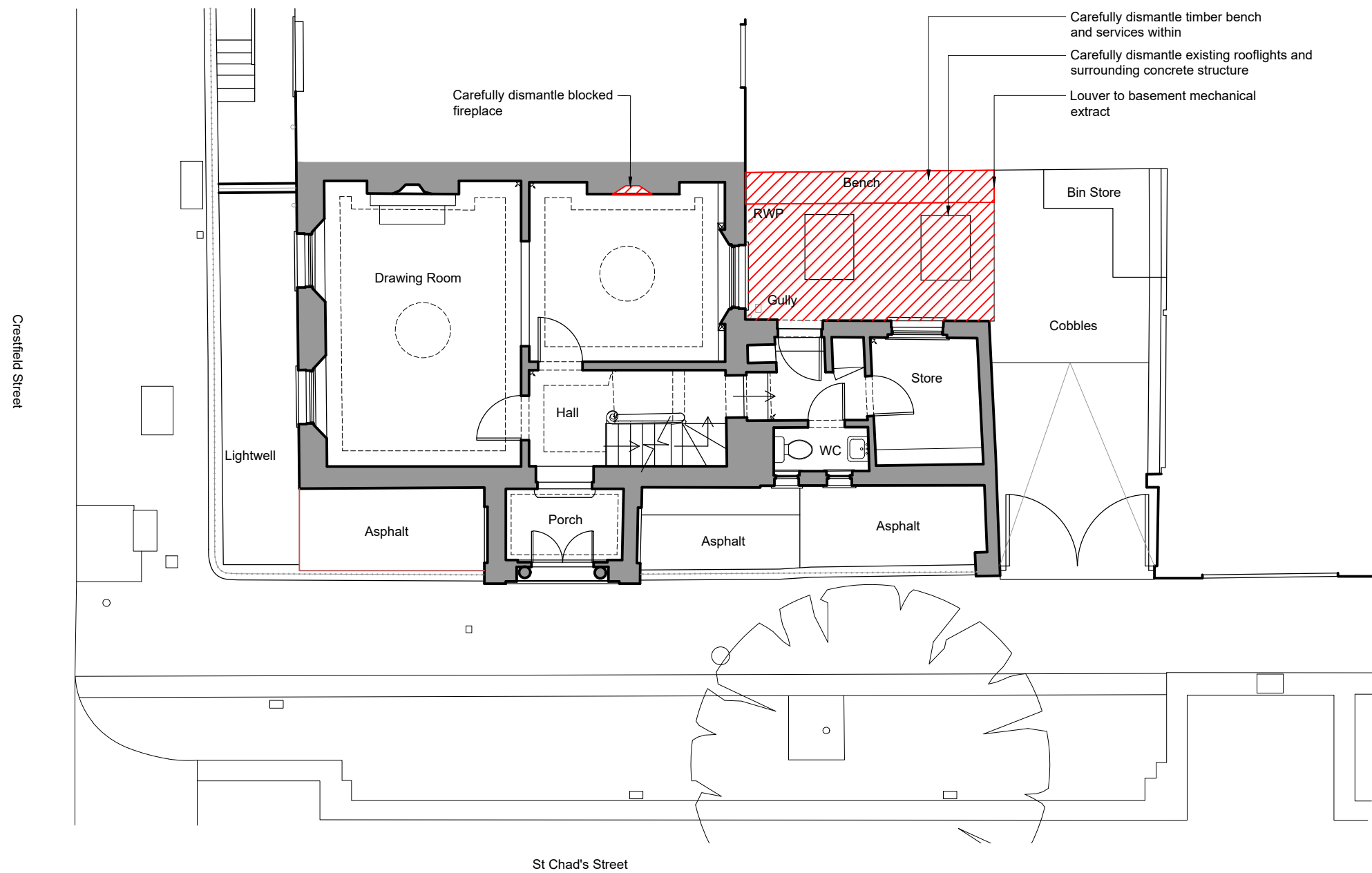
Donald Insall Associates
Chartered Architects and Historic Building Consultants

12 Devonshire Street
London W1G 7AB
(+44) 020 7245 9888
london@insall-architects.co.uk

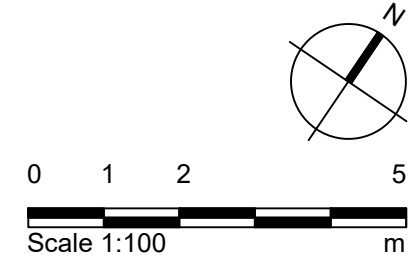
1 Crestfield Street

Project	CS1.01	No	5000
Scale (A3)	1:100	Status	P
		Revision	2

Basement Floor Plan
Demolition



01 Ground Floor Plan
5001 1:100 @ A3



Purpose of Issue:
FOR_COMMENT

- Notes**
- Any dwg format drawing is to be read in conjunction with and at the scale of the accompanying pdf.
 - Where colours other than black or grey are used, the drawing must be plotted in colour.
 - For status 'C' (Construction) drawings all dimensions are to be checked on site by the contractor, scaling is for Local Authority purposes only.
 - Unless otherwise indicated, all dimensions are in millimeters.
 - All information on this drawing is to be read in conjunction with the relevant Donald Insall Associates specification and trade contractors' drawings and information by specialists.
 - In the event of any discrepancy, please contact us immediately.
 - This drawing may contain survey information by others and is to be used solely for the purposes for which it was issued.
 - These are uncontrolled documents issued for information purposes only. If you have any queries regarding the drawings, please contact DIA immediately.
 - Please note DIA cannot be held responsible for any errors arising from changes made to an uncontrolled dwg file.

Rev	Date	Dwn	Auth	Revision
1	31-01-20	-	TOB	Cost Estimate
0	24-10-19	EKN	TOB	Initial Issue

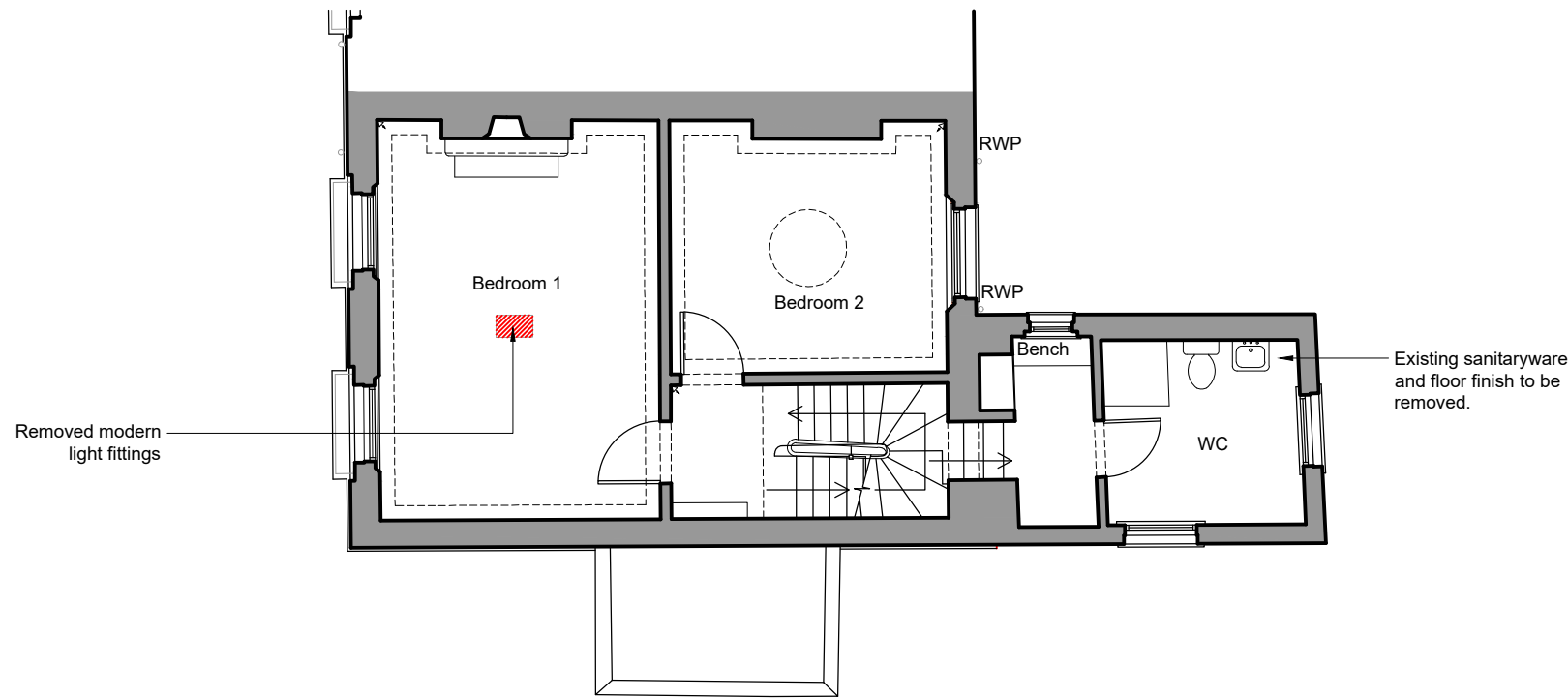
Donald Insall Associates
Chartered Architects and Historic Building Consultants

12 Devonshire Street
London W1G 7AB
(+44) 020 7245 9888
london@insall-architects.co.uk

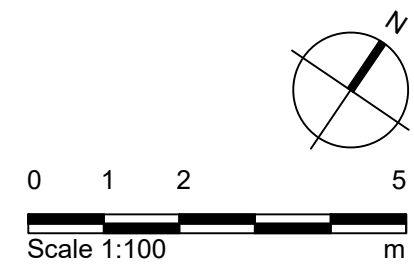
1 Crestfield Street

Project	CS1.01	No	5001
Scale (A3)	1:100	Status	P
		Revision	1

Ground Floor Plan
Demolition



01 First Floor Plan
5002 1:100 @ A3



Purpose of Issue:
FOR_COMMENT

- Notes**
- Any dwg format drawing is to be read in conjunction with and at the scale of the accompanying pdf.
 - Where colours other than black or grey are used, the drawing must be plotted in colour.
 - For status 'C' (Construction) drawings all dimensions are to be checked on site by the contractor, scaling is for Local Authority purposes only.
 - Unless otherwise indicated, all dimensions are in millimeters.
 - All information on this drawing is to be read in conjunction with the relevant Donald Insall Associates specification and trade contractors' drawings and information by specialists.
 - In the event of any discrepancy, please contact us immediately.
 - This drawing may contain survey information by others and is to be used solely for the purposes for which it was issued.
 - These are uncontrolled documents issued for information purposes only. If you have any queries regarding the drawings, please contact DIA immediately.
 - Please note DIA cannot be held responsible for any errors arising from changes made to an uncontrolled dwg file.

Drawing Status

F	Feasibility
S	Sketch Design
P	Planning
B	Building Control
D	Design Development
M	Measurement
T	Tender
C	Construction
R	Record

Rev	Date	Dwn	Auth	Revision
1	31-01-20	-	TOB	Cost Estimate
0	24-10-19	EKN	TOB	Initial Issue

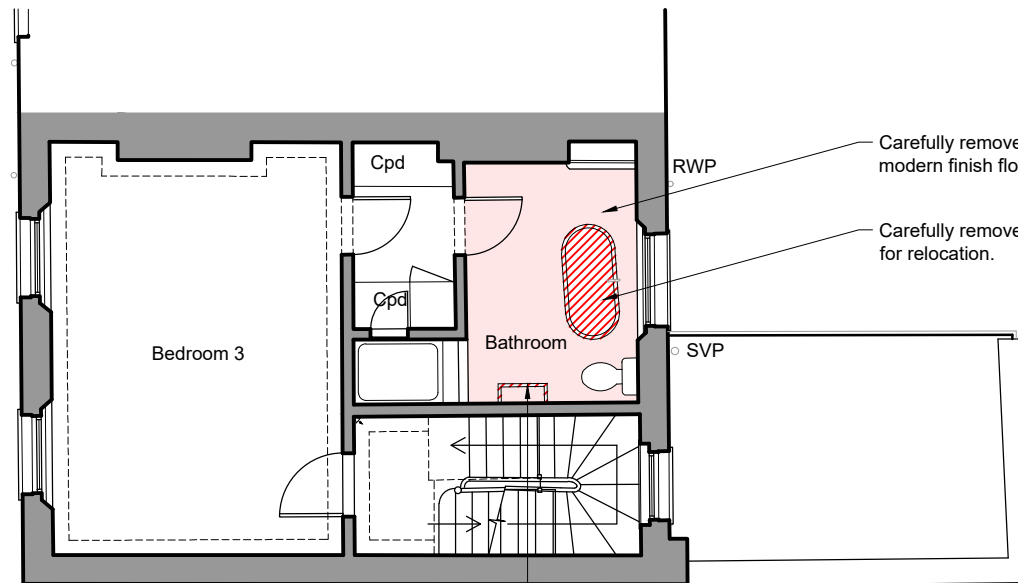
Donald Insall Associates
Chartered Architects and Historic Building Consultants

12 Devonshire Street
London W1G 7AB
(+44) 020 7245 9888
london@insall-architects.co.uk

1 Crestfield Street



Project	CS1.01	No	5002
Scale (A3)	1:100	Status	P
		Revision	1

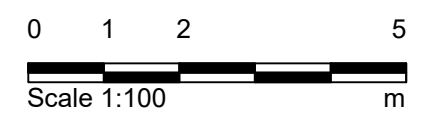
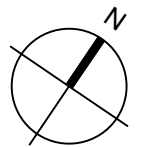
First Floor Plan
Demolition



01 Second Floor Plan
5003 1:100 @ A3

Key

-  Modern partition wall and boxing out
-  Floor finish (flag stones to be set aside for reuse)



Purpose of Issue:
FOR_COMMENT

Notes

- Any dwg format drawing is to be read in conjunction with and at the scale of the accompanying pdf.
- Where colours other than black or grey are used, the drawing must be plotted in colour.
- For status 'C' (Construction) drawings all dimensions are to be checked on site by the contractor, scaling is for Local Authority purposes only.
- Unless otherwise indicated, all dimensions are in millimeters.
- All information on this drawing is to be read in conjunction with the relevant Donald Insall Associates specification and trade contractors' drawings and information by specialists.
- In the event of any discrepancy, please contact us immediately.
- This drawing may contain survey information by others and is to be used solely for the purposes for which it was issued.
- These are uncontrolled documents issued for information purposes only. If you have any queries regarding the drawings, please contact DIA immediately.
- Please note DIA cannot be held responsible for any errors arising from changes made to an uncontrolled dwg file.

© 2019 DONALD INSALL ASSOCIATES LTD

Drawing Status					Revision				
Rev	Date	Dwn	Auth	Revision	Rev	Date	Dwn	Auth	Revision
					0	29-05-2020	EKN	TOB	Initial Issue

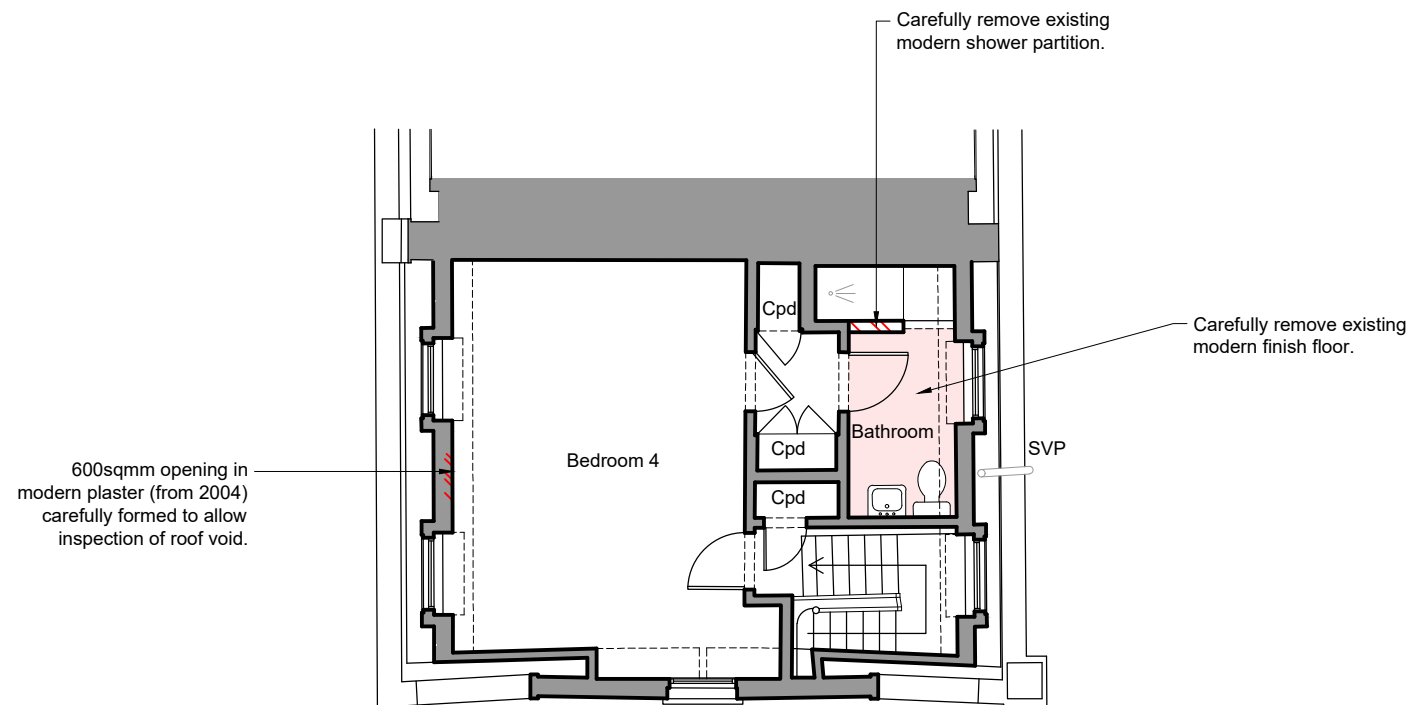
Donald Insall Associates
Chartered Architects and Historic Building Consultants

12 Devonshire Street
London W1G 7AB
(+44) 020 7245 9888
london@insall-architects.co.uk




1 Crestfield Street

Project	CS1.01	No	5003
Scale (A3)	1:100	Status	P
		Revision	0

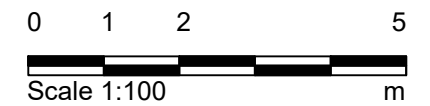
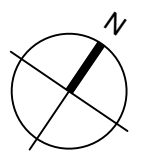
Second Floor Plan
Demolition



Key

-  Services / fixed furniture / tanks
-  Modern partition walls, plaster, and boxing out
-  Floor finish (flag stones to be set aside for reuse)

01 Third Floor Plan
5004 1:100 @ A3



Purpose of Issue:
FOR_COMMENT

Notes

- Any dwg format drawing is to be read in conjunction with and at the scale of the accompanying pdf.
- Where colours other than black or grey are used, the drawing must be plotted in colour.
- For status 'C' (Construction) drawings all dimensions are to be checked on site by the contractor, scaling is for Local Authority purposes only.
- Unless otherwise indicated, all dimensions are in millimeters.
- All information on this drawing is to be read in conjunction with the relevant Donald Insall Associates specification and trade contractors' drawings and information by specialists.
- In the event of any discrepancy, please contact us immediately.
- This drawing may contain survey information by others and is to be used solely for the purposes for which it was issued.
- These are uncontrolled documents issued for information purposes only. If you have any queries regarding the drawings, please contact DIA immediately.
- Please note DIA cannot be held responsible for any errors arising from changes made to an uncontrolled dwg file.

© 2019 DONALD INSALL ASSOCIATES LTD

Rev	Date	Dwn	Auth	Revision
0	29-05-2020	EKN	TOB	Initial Issue

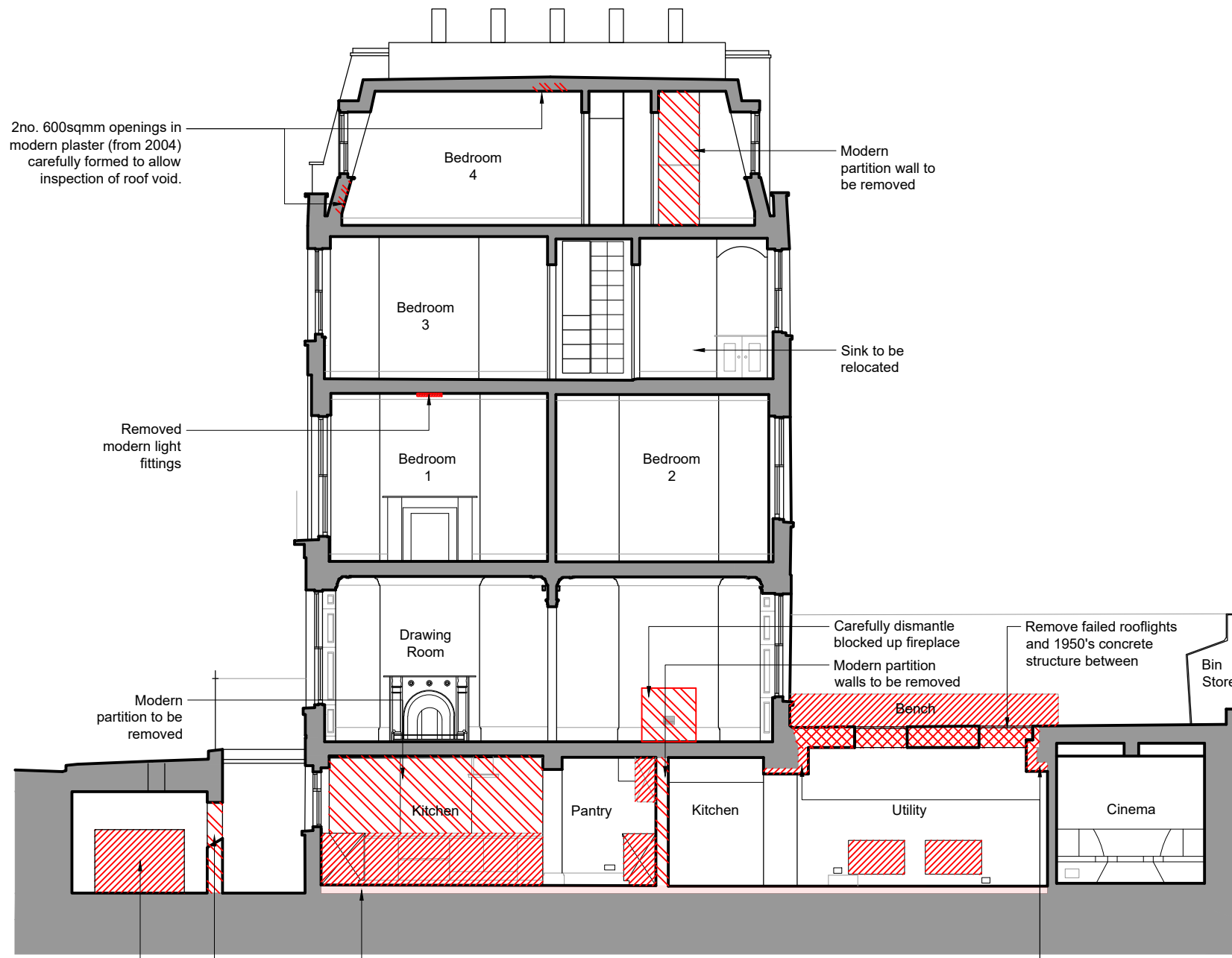
Donald Insall Associates
Chartered Architects and Historic Building Consultants

12 Devonshire Street
London W1G 7AB
(+44) 020 7245 9888
london@insall-architects.co.uk

1 Crestfield Street

Project	CS1.01	No	5004
Scale (A3)	1:100	Status	P
		Revision	0

Third Floor Plan
Demolition



2no. 600sqmm openings in modern plaster (from 2004) carefully formed to allow inspection of roof void.

Modern partition wall to be removed

Sink to be relocated

Removed modern light fittings

Carefully dismantle blocked up fireplace
Modern partition walls to be removed

Remove failed rooflights and 1950's concrete structure between

Modern partition to be removed

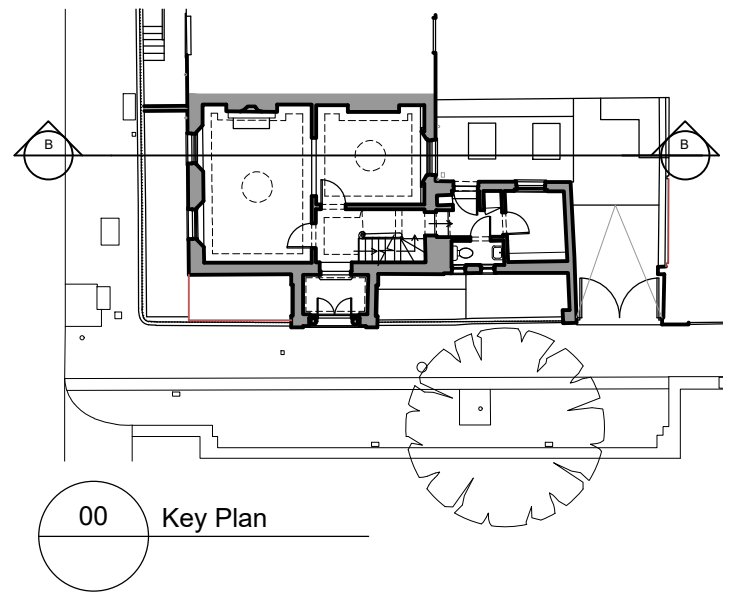
Bin Store

Remove asbestos, oil, oil tanks and carryout second environmental report to test for contamination.

Modern infill to vault doors to be carefully removed

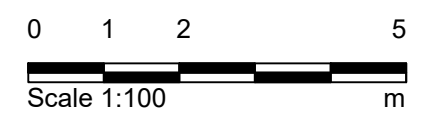
Floor finish and slab to be removed to allow for new underfloor heating system. Existing flag stones to be set aside for reuse.

Boxed out services to be removed



00 Key Plan

- Key
- Load bearing walls
 - Services / fixed furniture / tanks
 - Modern partition walls, plaster, and boxing out
 - Floor finish



01 Section BB
5101 1:100 @ A3

Purpose of Issue:
FOR_COMMENT

Notes

- Any dwg format drawing is to be read in conjunction with and at the scale of the accompanying pdf.
- Where colours other than black or grey are used, the drawing must be plotted in colour.
- For status 'C' (Construction) drawings all dimensions are to be checked on site by the contractor, scaling is for Local Authority purposes only.
- Unless otherwise indicated, all dimensions are in millimeters.
- All information on this drawing is to be read in conjunction with the relevant Donald Insall Associates specification and trade contractors' drawings and information by specialists.
- In the event of any discrepancy, please contact DIA immediately.
- This drawing may contain survey information by others and is to be used solely for the purposes for which it was issued.
- These are uncontrolled documents issued for information purposes only. If you have any queries regarding the drawings, please contact DIA immediately.
- Please note DIA cannot be held responsible for any errors arising from changes made to an uncontrolled dwg file.

© 2019 DONALD INSALL ASSOCIATES LTD

Rev	Date	Dwn	Auth	Revision
1	27-01-20	JXL	TOB	Initial Issue
0	24-10-19	EKN	TOB	Initial Issue

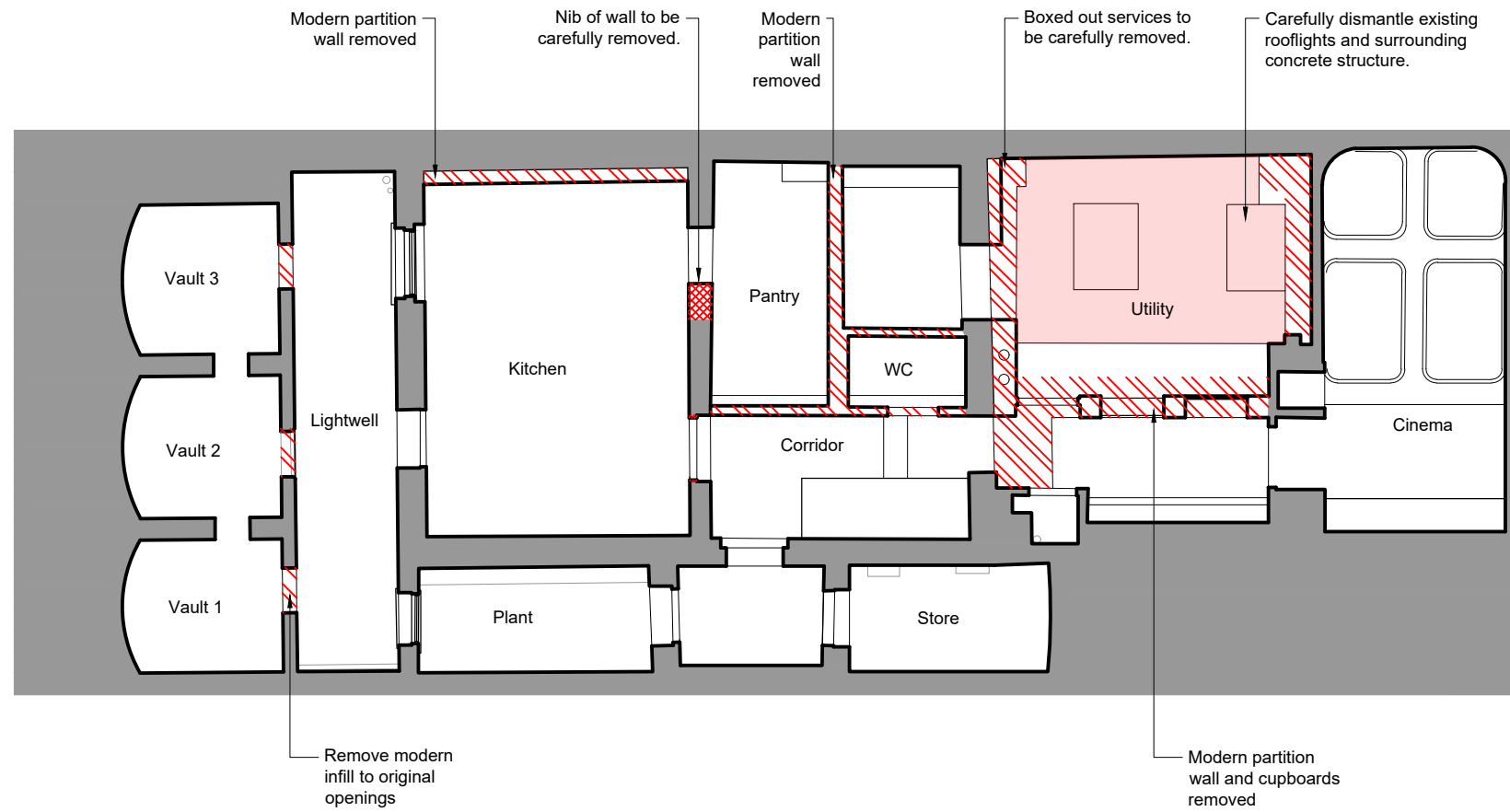
Donald Insall Associates
Chartered Architects and Historic Building Consultants

12 Devonshire Street
London W1G 7AB
(+44) 020 7245 9888
london@insall-architects.co.uk

1 Crestfield Street

Project	CS1.01	No	5101
Scale (A3)	1:100	Status	P
		Revision	1

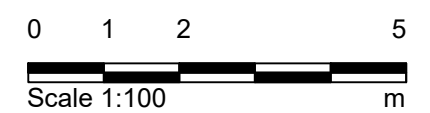
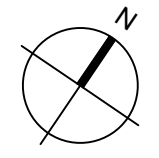
Section BB
Demolition



Key

- Load bearing walls to be removed
- Modern partition wall and boxing out to be removed
- Roof structure to be removed

01 Basement Reflected Ceiling Plan
5500 1:100 @ A3



Purpose of Issue:
FOR_COMMENT

Notes

1. Any dwg format drawing is to be read in conjunction with and at the scale of the accompanying pdf.
2. Where colours other than black or grey are used, the drawing must be plotted in colour.
3. For status 'C' (Construction) drawings all dimensions are to be checked on site by the contractor, scaling is for Local Authority purposes only.
4. Unless otherwise indicated, all dimensions are in millimeters.
5. All information on this drawing is to be read in conjunction with the relevant Donald Insall Associates specification and trade contractors' drawings and information by specialists.
6. In the event of any discrepancy, please contact us immediately.
7. This drawing may contain survey information by others and is to be used solely for the purposes for which it was issued.
8. These are uncontrolled documents issued for information purposes only. If you have any queries regarding the drawings, please contact DIA immediately.
9. Please note DIA cannot be held responsible for any errors arising from changes made to an uncontrolled dwg file.

© 2019 DONALD INSALL ASSOCIATES LTD

Rev	Date	Dwn	Auth	Revision
2	31-01-20	-	TOB	Cost Estimate
1	27-01-20	JXL	TOB	Revised design
0	24-10-19	EKN	TOB	Initial Issue

Donald Insall Associates
Chartered Architects and Historic Building Consultants

12 Devonshire Street
London W1G 7AB
(+44) 020 7245 9888
london@insall-architects.co.uk

1 Crestfield Street

Project	CS1.01	No	5500
Scale (A3)	1:100	Status	P
		Revision	2

Basement Reflected Ceiling Plan
Demolition