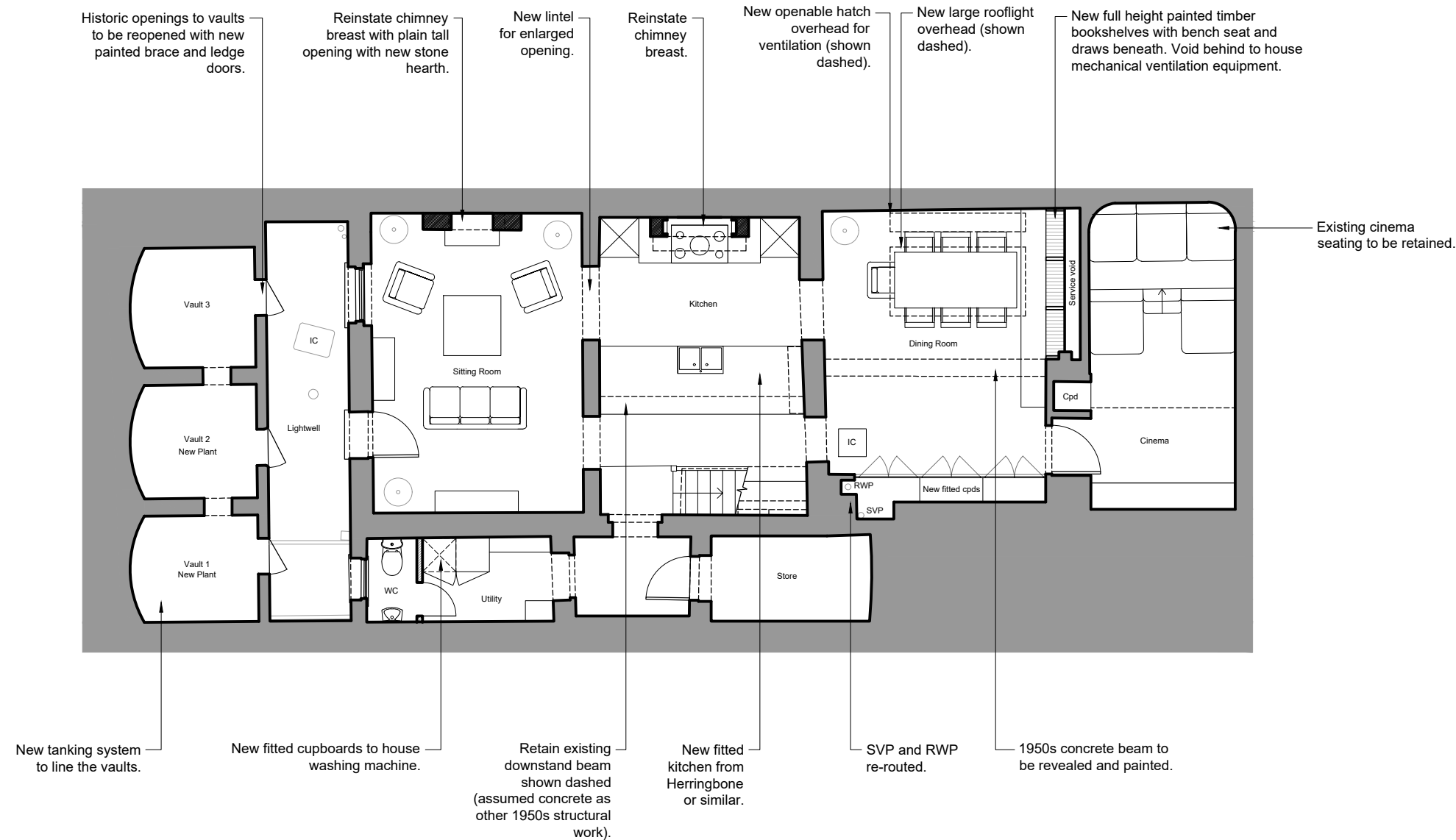
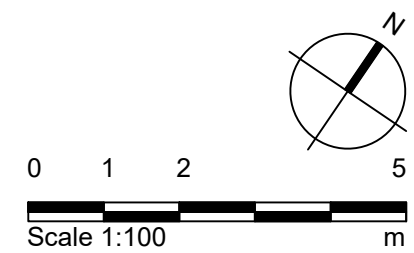


NOTES:

- Existing flag stones to be lifted and set aside for reuse.
- New underfloor heating system to sitting room, kitchen and dining room.
- Relay flag stone floor finish to sitting room, kitchen and dining room reusing existing flag stones were possible.
- Cinema room to be retained and protected.



01 Basement Plan
2000 1:100 @ A3



Purpose of Issue:
FOR_COMMENT

Notes

- Any dwg format drawing is to be read in conjunction with and at the scale of the accompanying pdf.
- Where colours other than black or grey are used, the drawing must be plotted in colour.
- For status 'C' (Construction) drawings all dimensions are to be checked on site by the contractor, scaling is for Local Authority purposes only.
- Unless otherwise indicated, all dimensions are in millimeters.
- All information on this drawing is to be read in conjunction with the relevant Donald Insall Associates specification and trade contractors' drawings and information by specialists.
- In the event of any discrepancy, please contact us immediately.
- This drawing may contain survey information by others and is to be used solely for the purposes for which it was issued.
- These are uncontrolled documents issued for information purposes only. If you have any queries regarding the drawings, please contact DIA immediately.
- Please note DIA cannot be held responsible for any errors arising from changes made to an uncontrolled dwg file.

Rev	Date	Dwn	Auth	Revision
3	31-01-20			TOB Cost Estimate
2	06-01-20	JXL	TOB	Updates to openings following Pre-App
1	24-10-19	EKN	TOB	Initial for Pre-App
0	02-08-19	JXL	TOB	Initial Issue

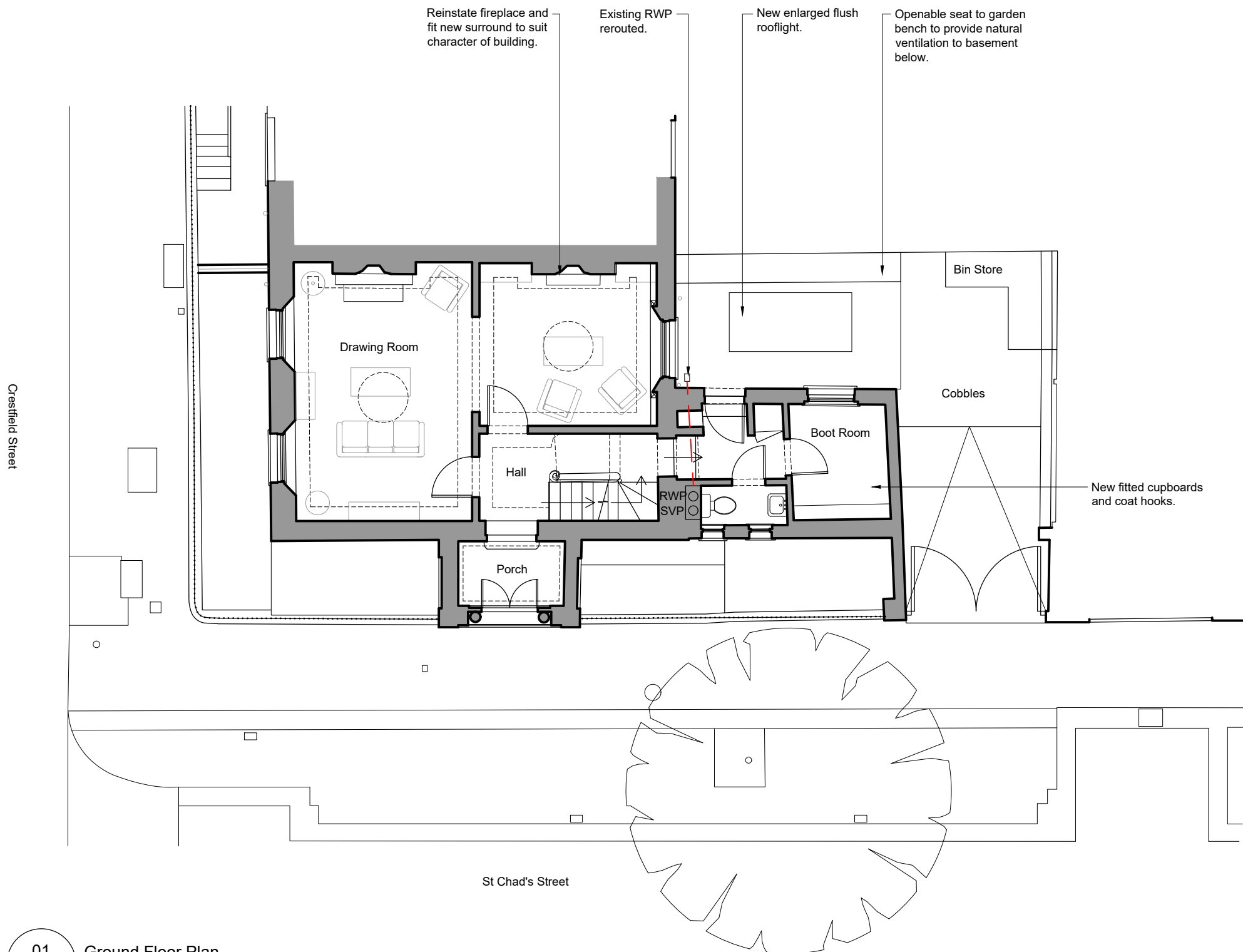
Donald Insall Associates
Chartered Architects and Historic Building Consultants

12 Devonshire Street
London W1G 7AB
(+44) 020 7245 9888
london@insall-architects.co.uk

1 Crestfield Street

Project	CS1.01	No	2000
Scale (A3)	1:100	Status	P
		Revision	3

Basement Floor Plan
Proposed



01 Ground Floor Plan
2001 1:100 @ A3

0 1 2 5
Scale 1:100 m

Purpose of Issue:
FOR_COMMENT

- Notes**
- Any dwg format drawing is to be read in conjunction with and at the scale of the accompanying pdf.
 - Where colours other than black or grey are used, the drawing must be plotted in colour.
 - For status 'C' (Construction) drawings all dimensions are to be checked on site by the contractor, scaling is for Local Authority purposes only.
 - Unless otherwise indicated, all dimensions are in millimeters.
 - All information on this drawing is to be read in conjunction with the relevant Donald Insall Associates specification and trade contractors' drawings and information by specialists.
 - In the event of any discrepancy, please contact us immediately.
 - This drawing may contain survey information by others and is to be used solely for the purposes for which it was issued.
 - These are uncontrolled documents issued for information purposes only. If you have any queries regarding the drawings, please contact DIA immediately.
 - Please note DIA cannot be held responsible for any errors arising from changes made to an uncontrolled dwg file.

Rev	Date	Dwn	Auth	Revision
1	31-01-20	-	TOB	Cost Estimate
0	02-08-19	JXL	TOB	Initial Issue

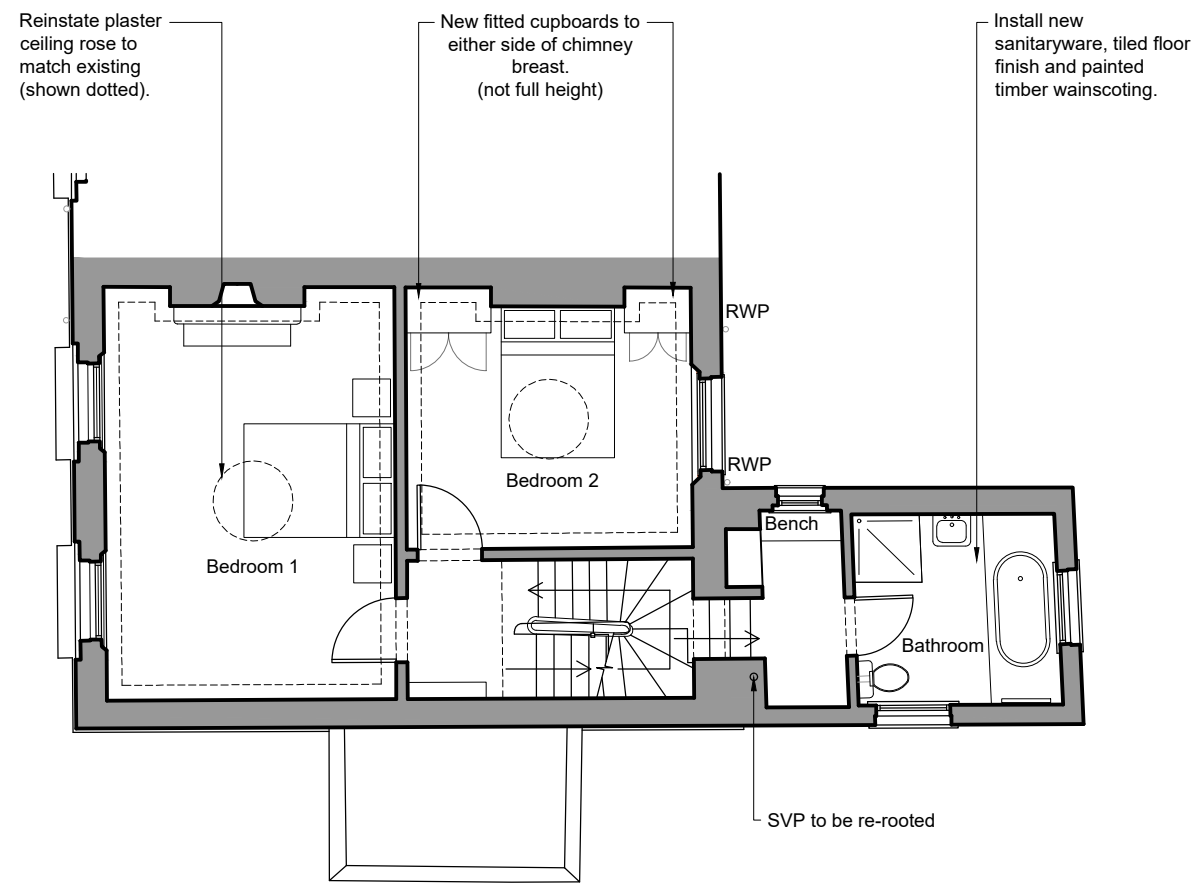
Donald Insall Associates
Chartered Architects and Historic Building Consultants

12 Devonshire Street
London W1G 7AB
(+44) 020 7245 9888
london@insall-architects.co.uk

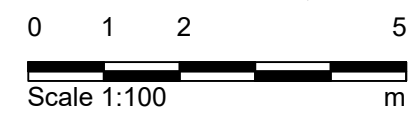
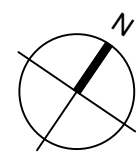
1 Crestfield Street

Project	CS1.01	No	2001
Scale (A3)	1:100	Status	P
		Revision	1

Ground Floor Plan
Proposed



01 First Floor Plan
2002 1:100 @ A3



Purpose of Issue:
FOR_COMMENT

Notes

- Any dwg format drawing is to be read in conjunction with and at the scale of the accompanying pdf.
- Where colours other than black or grey are used, the drawing must be plotted in colour.
- For status 'C' (Construction) drawings all dimensions are to be checked on site by the contractor, scaling is for Local Authority purposes only.
- Unless otherwise indicated, all dimensions are in millimeters.
- All information on this drawing is to be read in conjunction with the relevant Donald Insall Associates specification and trade contractors' drawings and information by specialists.
- In the event of any discrepancy, please contact us immediately.
- This drawing may contain survey information by others and is to be used solely for the purposes for which it was issued.
- These are uncontrolled documents issued for information purposes only. If you have any queries regarding the drawings, please contact DIA immediately.
- Please note DIA cannot be held responsible for any errors arising from changes made to an uncontrolled dwg file.

© 2019 DONALD INSALL ASSOCIATES LTD

Rev	Date	Dwn	Auth	Revision
1	31-01-20	-	TOB	Cost Estimate
0	02-08-19	JXL	TOB	Initial Issue

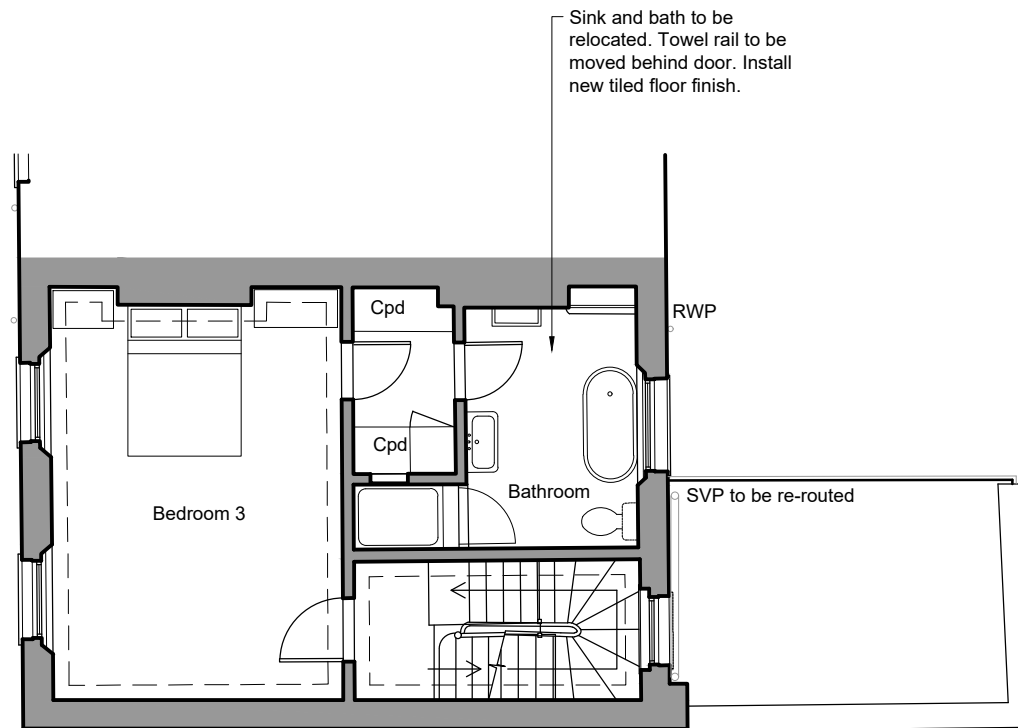
Donald Insall Associates
Chartered Architects and Historic Building Consultants

12 Devonshire Street
London W1G 7AB
(+44) 020 7245 9888
london@insall-architects.co.uk

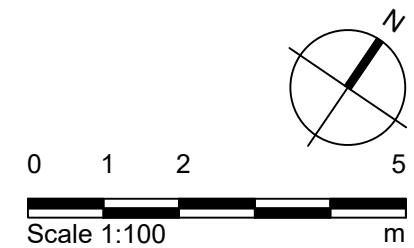
1 Crestfield Street

Project	CS1.01	No	2002
Scale (A3)	1:100	Status	P
		Revision	1

First Floor Plan
Proposed



01 Second Floor Plan
2003 1:100 @ A3



Purpose of Issue:
FOR_COMMENT

Notes

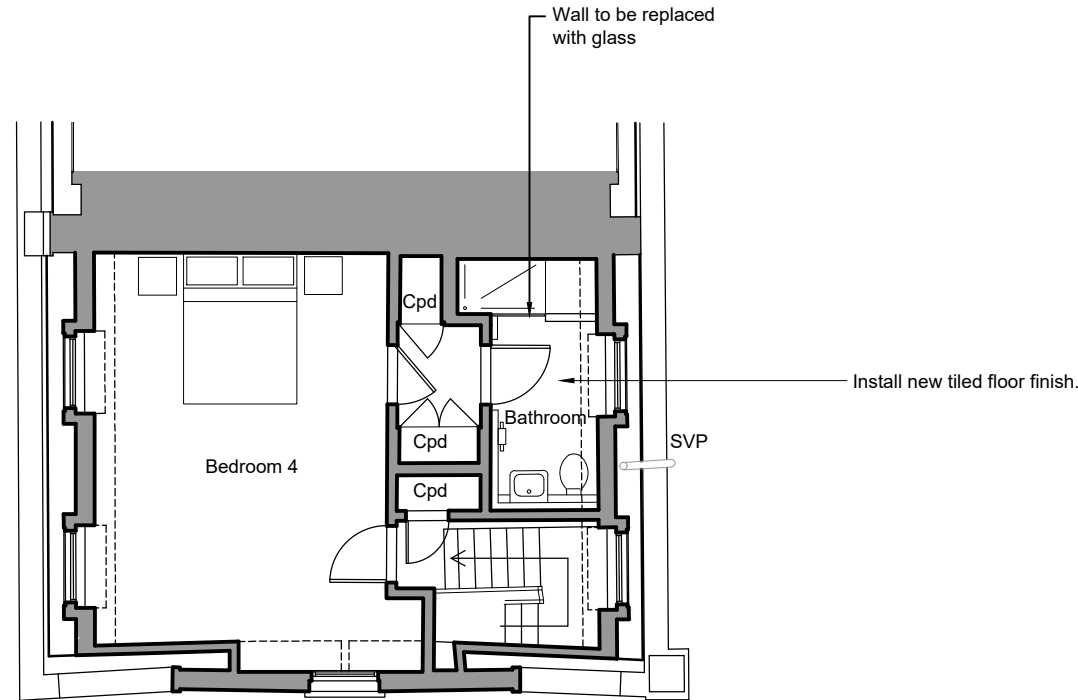
- Any dwg format drawing is to be read in conjunction with and at the scale of the accompanying pdf.
- Where colours other than black or grey are used, the drawing must be plotted in colour.
- For status 'C' (Construction) drawings all dimensions are to be checked on site by the contractor, scaling is for Local Authority purposes only.
- Unless otherwise indicated, all dimensions are in millimeters.
- All information on this drawing is to be read in conjunction with the relevant Donald Insall Associates specification and trade contractors' drawings and information by specialists.
- In the event of any discrepancy, please contact us immediately.
- This drawing may contain survey information by others and is to be used solely for the purposes for which it was issued.
- These are uncontrolled documents issued for information purposes only. If you have any queries regarding the drawings, please contact DIA immediately.
- Please note DIA cannot be held responsible for any errors arising from changes made to an uncontrolled dwg file.

Drawing Status

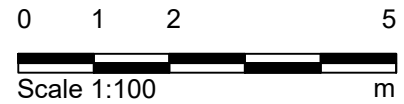
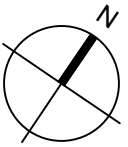
- F Feasibility
- S Sketch Design
- P Planning
- B Building Control
- D Design Development
- M Measurement
- T Tender
- C Construction
- R Record

Rev	Date	Dwn	Auth	Revision	Rev	Date	Dwn	Auth	Revision
					1	31-01-20	-	TOB	Cost Estimate
					0	02-08-19	JXL	TOB	Initial Issue

Donald Insall Associates Chartered Architects and Historic Building Consultants		12 Devonshire Street London W1G 7AB (+44) 020 7245 9888 london@insall-architects.co.uk	
		1 Crestfield Street	
Second Floor Plan Proposed		Project CS1.01	No 2003
Scale (A3) 1:100	Status P	Revision 1	



01 Third Floor Plan
2004 1:100 @ A3



Purpose of Issue:
FOR_COMMENT

Notes

- Any dwg format drawing is to be read in conjunction with and at the scale of the accompanying pdf.
- Where colours other than black or grey are used, the drawing must be plotted in colour.
- For status 'C' (Construction) drawings all dimensions are to be checked on site by the contractor, scaling is for Local Authority purposes only.
- Unless otherwise indicated, all dimensions are in millimeters.
- All information on this drawing is to be read in conjunction with the relevant Donald Insall Associates specification and trade contractors' drawings and information by specialists.
- In the event of any discrepancy, please contact us immediately.
- This drawing may contain survey information by others and is to be used solely for the purposes for which it was issued.
- These are uncontrolled documents issued for information purposes only. If you have any queries regarding the drawings, please contact DIA immediately.
- Please note DIA cannot be held responsible for any errors arising from changes made to an uncontrolled dwg file.

© 2019 DONALD INSALL ASSOCIATES LTD

Rev	Date	Dwn	Auth	Revision
1	31-01-20	-	TOB	Cost Estimate
0	02-08-19	JXL	TOB	Initial Issue

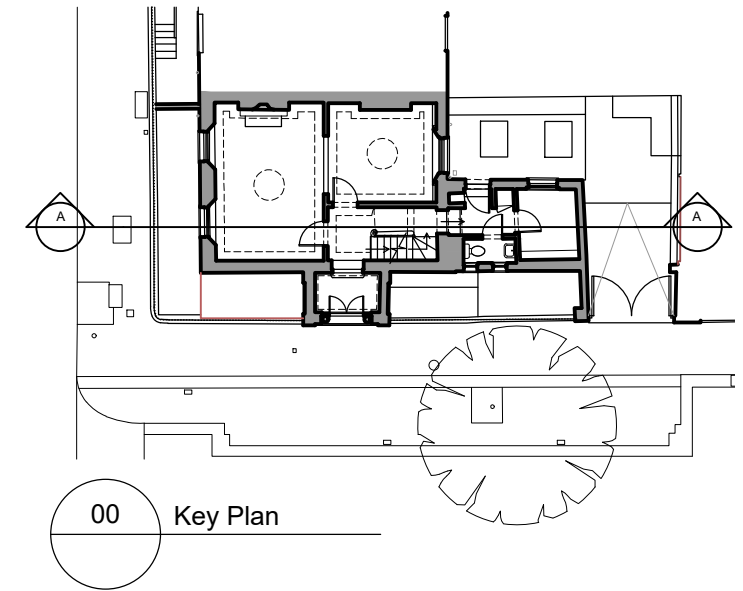
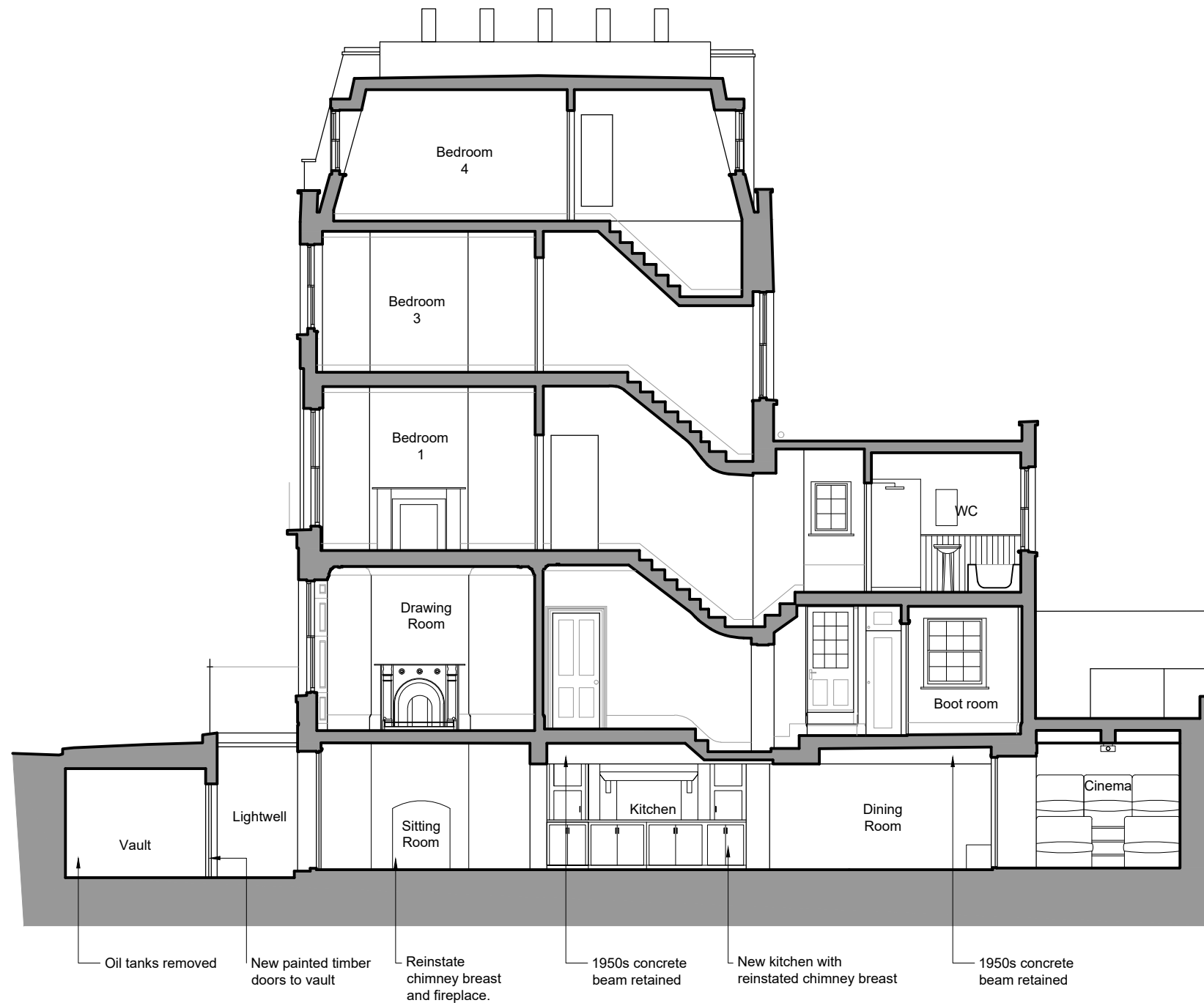
Donald Insall Associates
Chartered Architects and Historic Building Consultants

12 Devonshire Street
London W1G 7AB
(+44) 020 7245 9888
london@insall-architects.co.uk

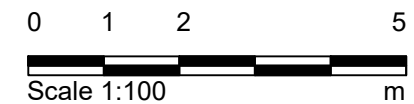
1 Crestfield Street

Project	CS1.01	No	2004
Scale (A3)	1:100	Status	P
		Revision	1

Third Floor Plan
Proposed



01 Section AA
2100 1:100 @ A3



Purpose of Issue:
FOR_COMMENT

- Notes**
- Any dwg format drawing is to be read in conjunction with and at the scale of the accompanying pdf.
 - Where colours other than black or grey are used, the drawing must be plotted in colour.
 - For status 'C' (Construction) drawings all dimensions are to be checked on site by the contractor, scaling is for Local Authority purposes only.
 - Unless otherwise indicated, all dimensions are in millimeters.
 - All information on this drawing is to be read in conjunction with the relevant Donald Insall Associates specification and trade contractors' drawings and information by specialists.
 - In the event of any discrepancy, please contact us immediately.
 - This drawing may contain survey information by others and is to be used solely for the purposes for which it was issued.
 - These are uncontrolled documents issued for information purposes only. If you have any queries regarding the drawings, please contact DIA immediately.
 - Please note DIA cannot be held responsible for any errors arising from changes made to an uncontrolled dwg file.

Drawing Status

F Feasibility
S Sketch Design
P Planning
B Building Control
D Design Development
M Measurement
T Tender
C Construction
R Record

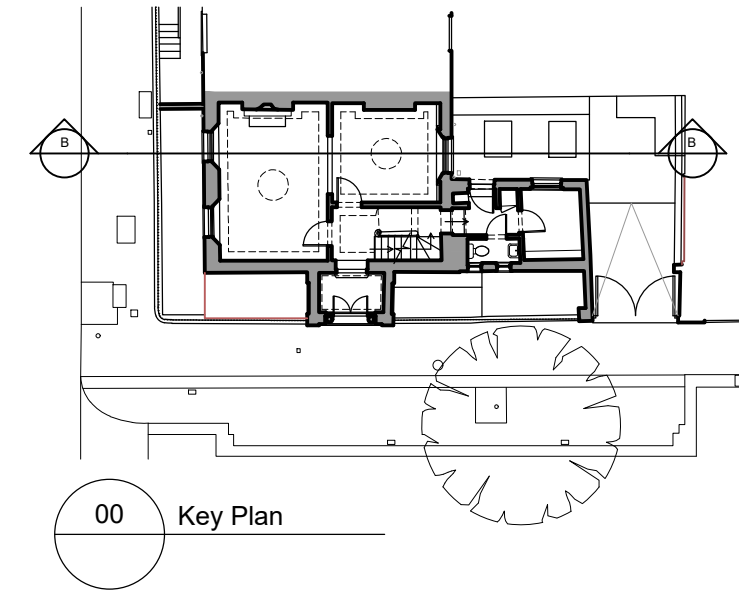
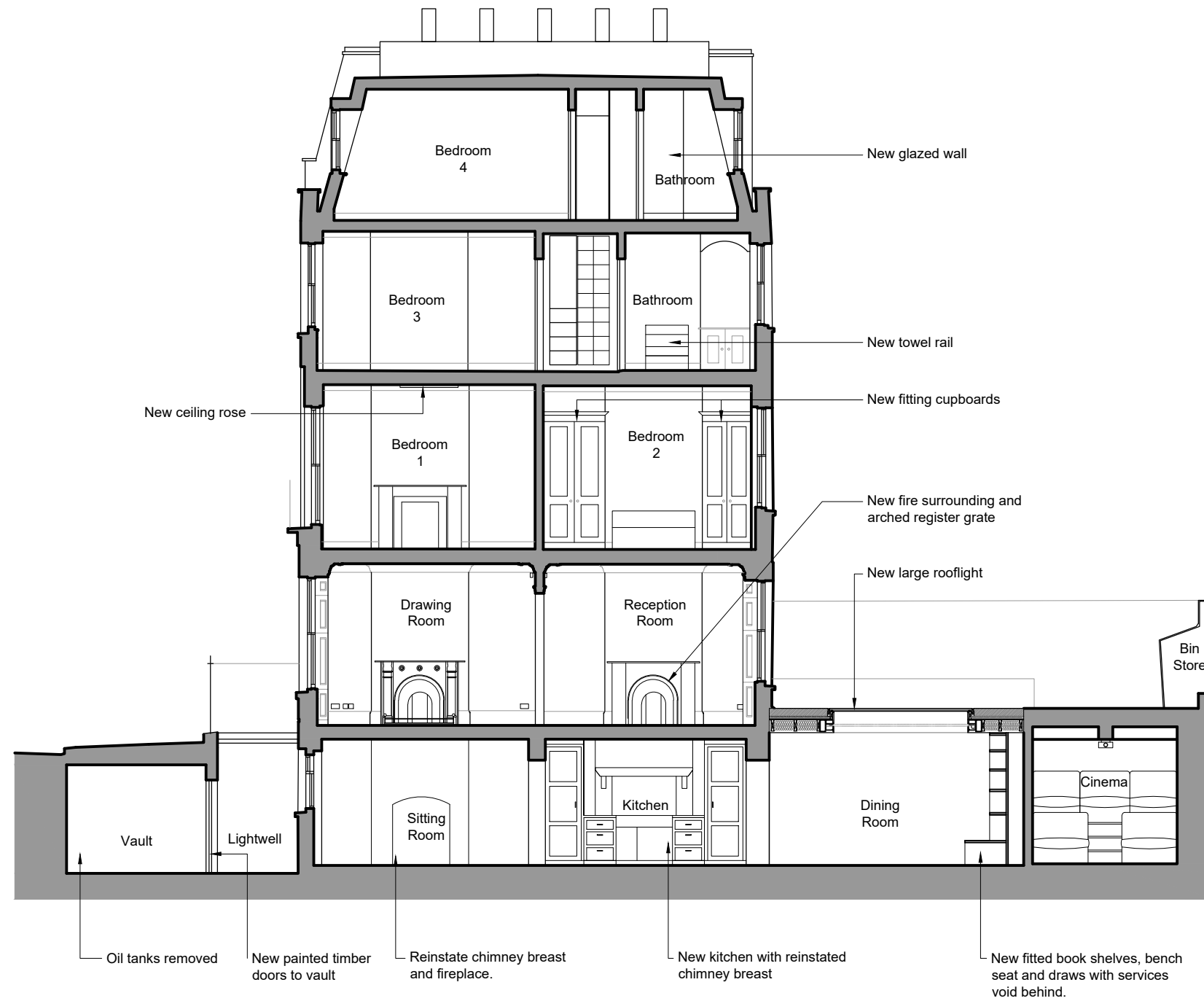
Rev	Date	Dwn	Auth	Revision	Rev	Date	Dwn	Auth	Revision
					2	31-01-20	-	TOB	Cost Estimate
					1	27-01-20	JXL	TOB	Initial Issue
					0	24-10-19	EKN	TOB	Initial Issue

Donald Insall Associates
Chartered Architects and Historic Building Consultants

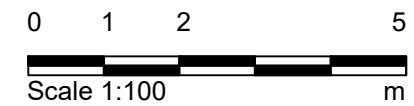
12 Devonshire Street
London W1G 7AB
(+44) 020 7245 9888
london@insall-architects.co.uk

1 Crestfield Street

Section AA Proposed	Project CS1.01	No 2100
	Scale (A3) 1:100	Status P
		Revision 2



01 Section BB
2101 1:100 @ A3



Purpose of Issue:
FOR_COMMENT

- Notes**
- Any dwg format drawing is to be read in conjunction with and at the scale of the accompanying pdf.
 - Where colours other than black or grey are used, the drawing must be plotted in colour.
 - For status 'C' (Construction) drawings all dimensions are to be checked on site by the contractor, scaling is for Local Authority purposes only.
 - Unless otherwise indicated, all dimensions are in millimeters.
 - All information on this drawing is to be read in conjunction with the relevant Donald Insall Associates specification and trade contractors' drawings and information by specialists.
 - In the event of any discrepancy, please contact us immediately.
 - This drawing may contain survey information by others and is to be used solely for the purposes for which it was issued.
 - These are uncontrolled documents issued for information purposes only. If you have any queries regarding the drawings, please contact DIA immediately.
 - Please note DIA cannot be held responsible for any errors arising from changes made to an uncontrolled dwg file.

Rev	Date	Dwn	Auth	Revision
2	31-01-20	-	TOB	Cost Estimate
1	27-01-20	JXL	TOB	Revised design
0	24-10-19	EKN	TOB	Initial Issue

Donald Insall Associates
Chartered Architects and Historic Building Consultants

12 Devonshire Street
London W1G 7AB
(+44) 020 7245 9888
london@insall-architects.co.uk

1 Crestfield Street

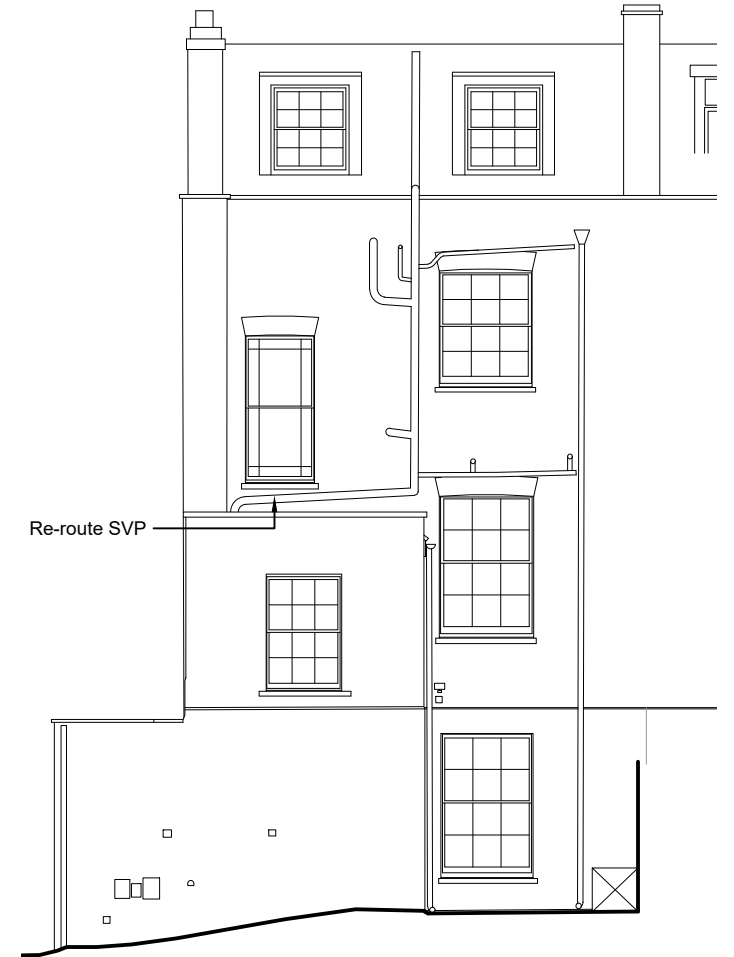
Section BB Proposed	Project CS1.01	No 2101
	Scale (A3) 1:100	Status P
		Revision 1



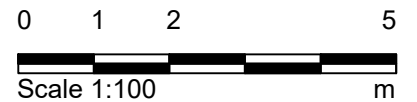
01 West Elevation
2200 1:100 @ A3



02 South Elevation
2200 1:100 @ A3



03 East Elevation
2200 1:100 @ A3



Purpose of Issue:
FOR_COMMENT

- Notes**
- Any dwg format drawing is to be read in conjunction with and at the scale of the accompanying pdf.
 - Where colours other than black or grey are used, the drawing must be plotted in colour.
 - For status 'C' (Construction) drawings all dimensions are to be checked on site by the contractor, scaling is for Local Authority purposes only.
 - Unless otherwise indicated, all dimensions are in millimeters.
 - All information on this drawing is to be read in conjunction with the relevant Donald Insall Associates specification and trade contractors' drawings and information by specialists.
 - In the event of any discrepancy, please contact us immediately.
 - This drawing may contain survey information by others and is to be used solely for the purposes for which it was issued.
 - These are uncontrolled documents issued for information purposes only. If you have any queries regarding the drawings, please contact DIA immediately.
 - Please note DIA cannot be held responsible for any errors arising from changes made to an uncontrolled dwg file.

- Drawing Status**
- F Feasibility
 - S Sketch Design
 - P Planning
 - B Building Control
 - D Design Development
 - M Measurement
 - T Tender
 - C Construction
 - R Record

Rev	Date	Dwn	Auth	Revision
1	31-01-20	-	TOB	Cost Estimate
0	24-10-19	EKN	TOB	Initial Issue

Donald Insall Associates
Chartered Architects and Historic Building Consultants

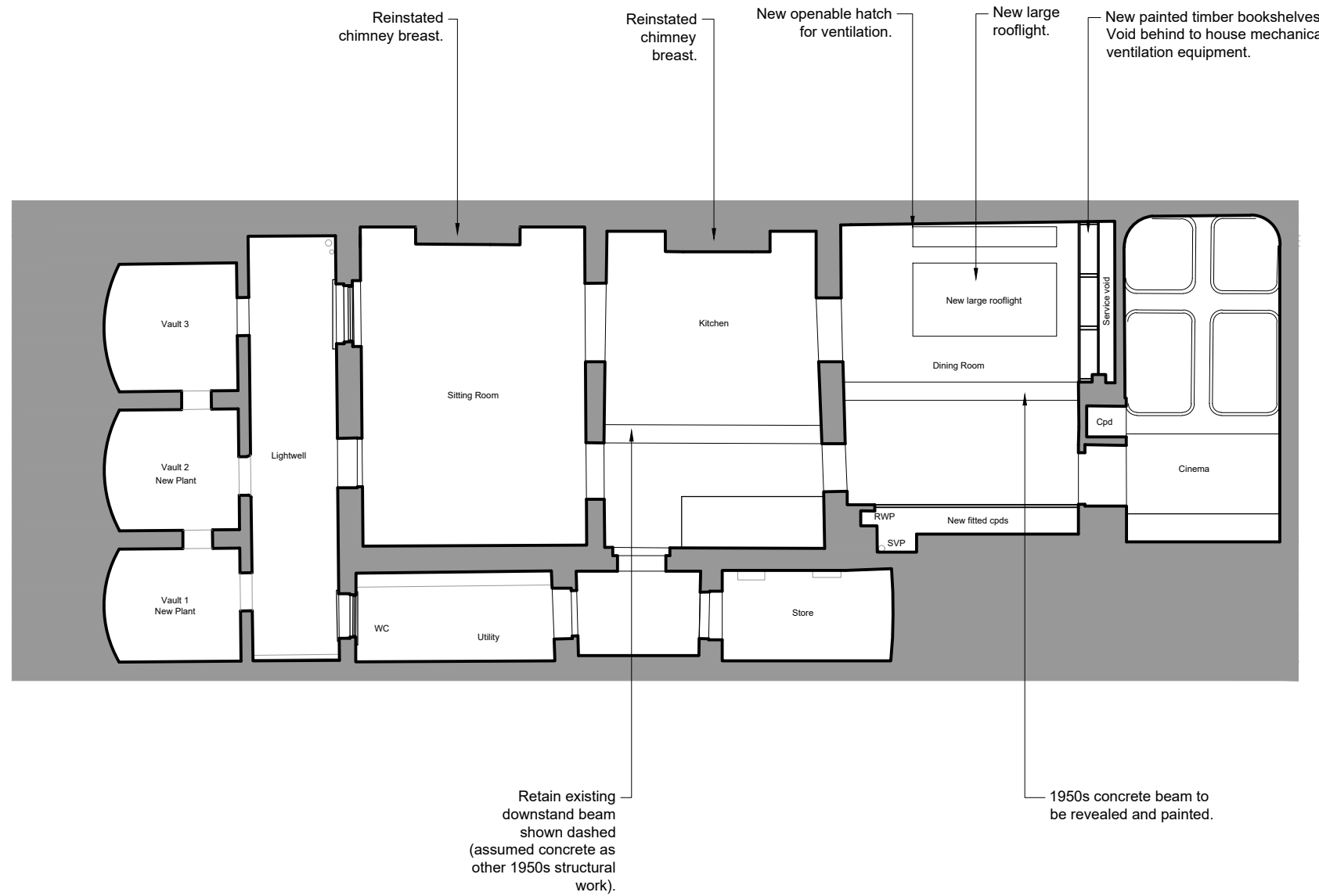
12 Devonshire Street
London W1G 7AB
(+44) 020 7245 9888
london@insall-architects.co.uk

1 Crestfield Street

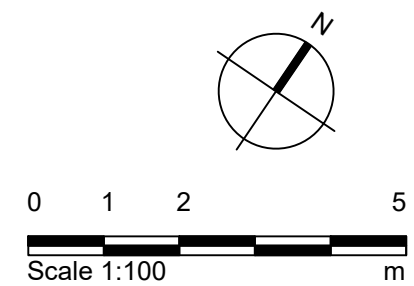
Elevations Proposed	Project	CS1.01	No	2200
	Scale (A3)	1:100	Status	P
			Revision	1

NOTES:

- Cinema room to be retained and protected.



01 Basement Reflected Ceiling Plan
2500 1:100 @ A3



Notes

1. Any dwg format drawing is to be read in conjunction with and at the scale of the accompanying pdf.
2. Where colours other than black or grey are used, the drawing must be plotted in colour.
3. For status 'C' (Construction) drawings all dimensions are to be checked on site by the contractor, scaling is for Local Authority purposes only.
4. Unless otherwise indicated, all dimensions are in millimeters.
5. All information on this drawing is to be read in conjunction with the relevant Donald Insall Associates specification and trade contractors' drawings and information by specialists.
6. In the event of any discrepancy, please contact DIA immediately.
7. This drawing may contain survey information by others and is to be used solely for the purposes for which it was issued.
8. These are uncontrolled documents issued for information purposes only. If you have any queries regarding the drawings, please contact DIA immediately.
9. Please note DIA cannot be held responsible for any errors arising from changes made to an uncontrolled dwg file.

© 2019 DONALD INSALL ASSOCIATES LTD

Rev	Date	Dwn	Auth	Revision
0	24-10-19	EKN	TOB	Initial Issue

Purpose of Issue:
FOR_PLANNING

Donald Insall Associates
Chartered Architects and Historic Building Consultants

12 Devonshire Street
London W1G 7AB
(+44) 020 7245 9888
london@insall-architects.co.uk

1 Crestfield Street

Project	CS1.01	No	2500
Scale (A3)	1:100	Status	P
		Revision	0

Basement Reflected Ceiling Plan
Proposed