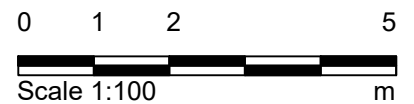
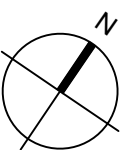


01 Basement Plan
1000 1:100 @ A3



Purpose of Issue:
FOR_COMMENT

- Notes**
- Any dwg format drawing is to be read in conjunction with and at the scale of the accompanying pdf.
 - Where colours other than black or grey are used, the drawing must be plotted in colour.
 - For status 'C' (Construction) drawings all dimensions are to be checked on site by the contractor, scaling is for Local Authority purposes only.
 - Unless otherwise indicated, all dimensions are in millimeters.
 - All information on this drawing is to be read in conjunction with the relevant Donald Insall Associates specification and trade contractors' drawings and information by specialists.
 - In the event of any discrepancy, please contact us immediately.
 - This drawing may contain survey information by others and is to be used solely for the purposes for which it was issued.
 - These are uncontrolled documents issued for information purposes only. If you have any queries regarding the drawings, please contact DIA immediately.
 - Please note DIA cannot be held responsible for any errors arising from changes made to an uncontrolled dwg file.

Drawing Status

F Feasibility
S Sketch Design
P Planning
B Building Control
D Design Development
M Measurement
T Tender
C Construction
R Record

Rev	Date	Dwn	Auth	Revision
1	31-01-20	-	TOB	Cost Estimate
0	24-10-19	EKN	TOB	Initial Issue

Donald Insall Associates
Chartered Architects and Historic Building Consultants

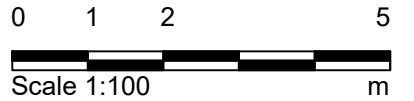
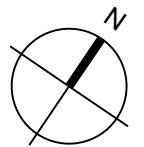
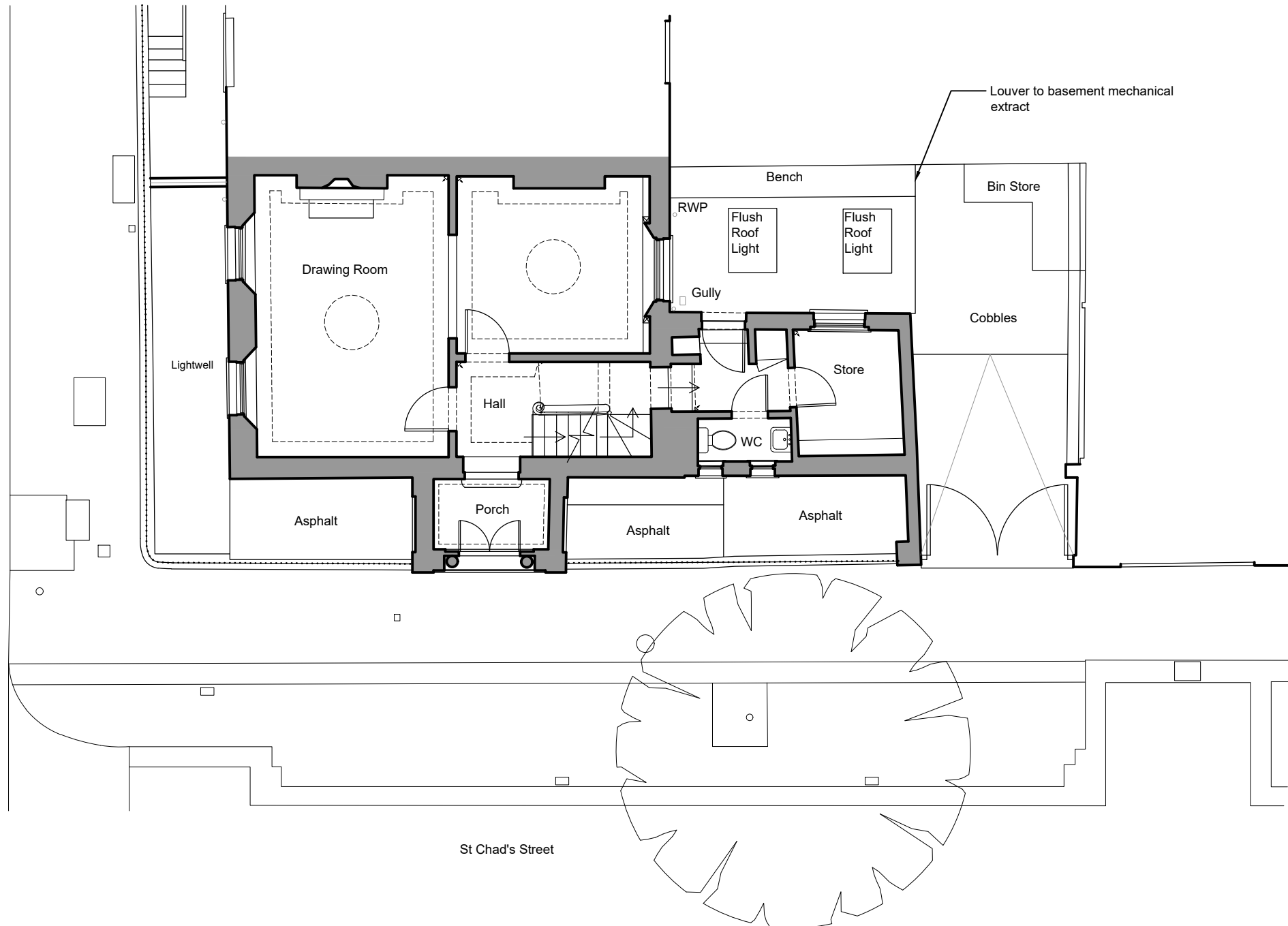
12 Devonshire Street
London W1G 7AB
(+44) 020 7245 9888
london@insall-architects.co.uk

1 Crestfield Street

Project	CS1.01	No	1000
Scale (A3)	1:100	Status	P
		Revision	1

Basement Floor Plan
Existing

Crestfield Street



01 Ground Floor Plan
1001 1:100 @ A3

Purpose of Issue:
FOR_COMMENT

- Notes**
- Any dwg format drawing is to be read in conjunction with and at the scale of the accompanying pdf.
 - Where colours other than black or grey are used, the drawing must be plotted in colour.
 - For status 'C' (Construction) drawings all dimensions are to be checked on site by the contractor, scaling is for Local Authority purposes only.
 - Unless otherwise indicated, all dimensions are in millimeters.
 - All information on this drawing is to be read in conjunction with the relevant Donald Insall Associates specification and trade contractors' drawings and information by specialists.
 - In the event of any discrepancy, please contact us immediately.
 - This drawing may contain survey information by others and is to be used solely for the purposes for which it was issued.
 - These are uncontrolled documents issued for information purposes only. If you have any queries regarding the drawings, please contact DIA immediately.
 - Please note DIA cannot be held responsible for any errors arising from changes made to an uncontrolled dwg file.

Drawing Status

F	Feasibility
S	Sketch Design
P	Planning
B	Building Control
D	Design Development
M	Measurement
T	Tender
C	Construction
R	Record

Rev	Date	Dwn	Auth	Revision

Rev	Date	Dwn	Auth	Revision
1	31-01-20	-	TOB	Cost Estimate
0	24-10-19	EKN	TOB	Initial Issue

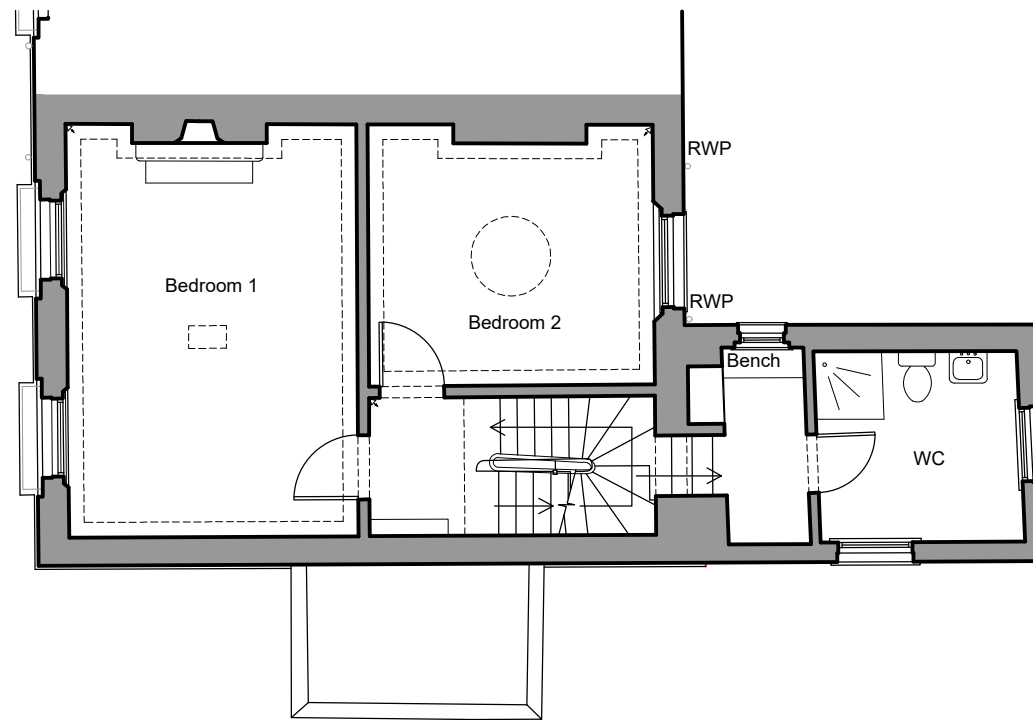
Donald Insall Associates
Chartered Architects and Historic Building Consultants

12 Devonshire Street
London W1G 7AB
(+44) 020 7245 9888
london@insall-architects.co.uk

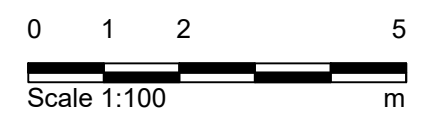
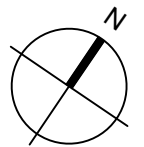
1 Crestfield Street

Project	CS1.01	No	1001
Scale (A3)	1:100	Status	P
		Revision	1

Ground Floor Plan
Existing



01 First Floor
1002 1:100 @ A3



Purpose of Issue:
FOR_COMMENT

Notes

- Any dwg format drawing is to be read in conjunction with and at the scale of the accompanying pdf.
- Where colours other than black or grey are used, the drawing must be plotted in colour.
- For status 'C' (Construction) drawings all dimensions are to be checked on site by the contractor, scaling is for Local Authority purposes only.
- Unless otherwise indicated, all dimensions are in millimeters.
- All information on this drawing is to be read in conjunction with the relevant Donald Insall Associates specification and trade contractors' drawings and information by specialists.
- In the event of any discrepancy, please contact us immediately.
- This drawing may contain survey information by others and is to be used solely for the purposes for which it was issued.
- These are uncontrolled documents issued for information purposes only. If you have any queries regarding the drawings, please contact DIA immediately.
- Please note DIA cannot be held responsible for any errors arising from changes made to an uncontrolled dwg file.

Drawing Status

F Feasibility
S Sketch Design
P Planning
B Building Control
D Design Development
M Measurement
T Tender
C Construction
R Record

Rev	Date	Dwn	Auth	Revision
1	31-01-20	-	TOB	Cost Estimate
0	24-10-19	EKN	TOB	Initial Issue

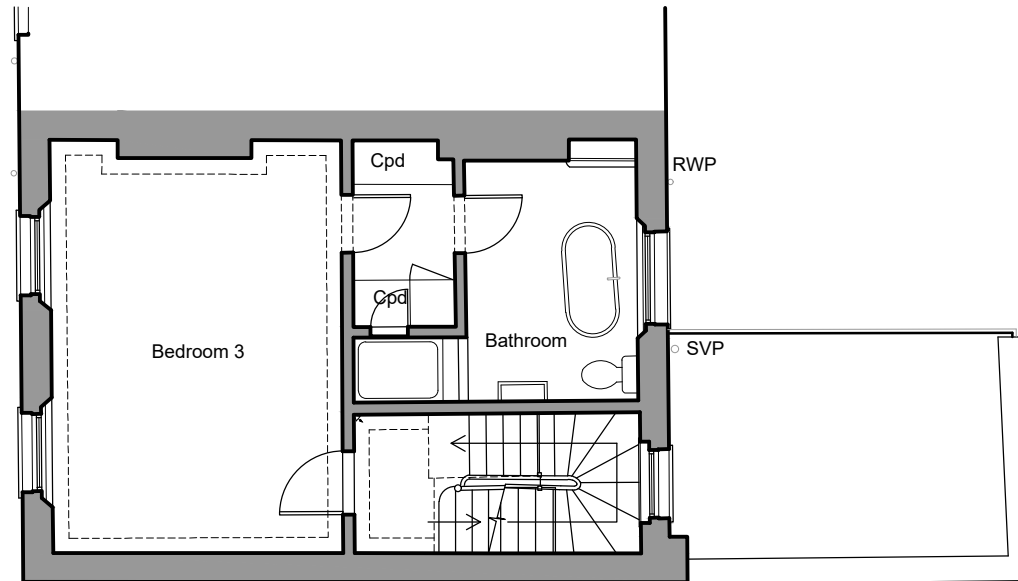
Donald Insall Associates
Chartered Architects and Historic Building Consultants

12 Devonshire Street
London W1G 7AB
(+44) 020 7245 9888
london@insall-architects.co.uk

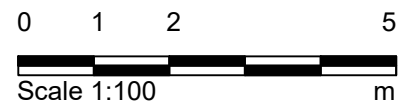
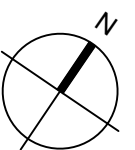
1 Crestfield Street

Project	CS1.01	No	1002
Scale (A3)	1:100	Status	P
		Revision	1

First Floor Plan
Existing



01 Second Floor Plan
1003 1:100 @ A3



Purpose of Issue:
FOR_COMMENT

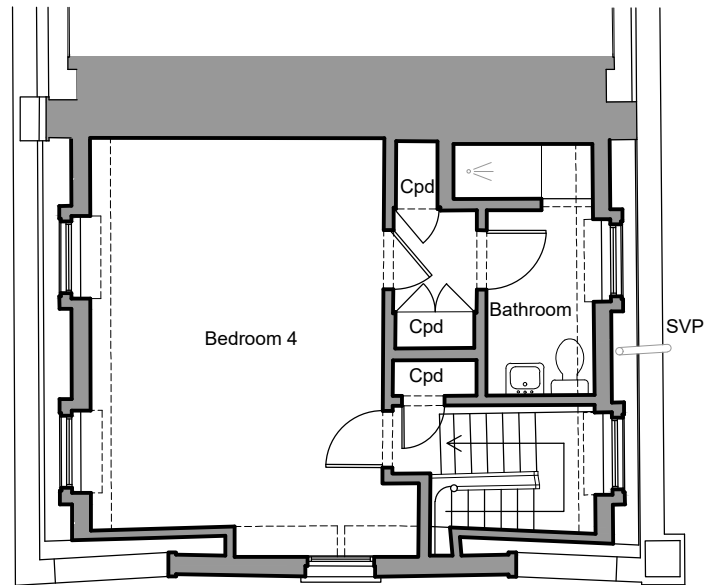
Notes

- Any dwg format drawing is to be read in conjunction with and at the scale of the accompanying pdf.
- Where colours other than black or grey are used, the drawing must be plotted in colour.
- For status 'C' (Construction) drawings all dimensions are to be checked on site by the contractor, scaling is for Local Authority purposes only.
- Unless otherwise indicated, all dimensions are in millimeters.
- All information on this drawing is to be read in conjunction with the relevant Donald Insall Associates specification and trade contractors' drawings and information by specialists.
- In the event of any discrepancy, please contact us immediately.
- This drawing may contain survey information by others and is to be used solely for the purposes for which it was issued.
- These are uncontrolled documents issued for information purposes only. If you have any queries regarding the drawings, please contact DIA immediately.
- Please note DIA cannot be held responsible for any errors arising from changes made to an uncontrolled dwg file.

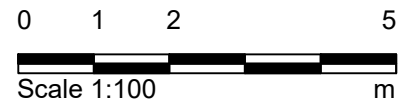
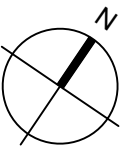
© 2019 DONALD INSALL ASSOCIATES LTD

Rev	Date	Dwn	Auth	Revision
1	31-01-20	-	TOB	Cost Estimate
0	24-10-19	EKN	TOB	Initial Issue

Donald Insall Associates <small>Chartered Architects and Historic Building Consultants</small>		12 Devonshire Street London W1G 7AB (+44) 020 7245 9888 london@insall-architects.co.uk	
1 Crestfield Street		Project CS1.01	No 1003
Second Floor Plan Existing		Scale (A3) 1:100	Status P
		Revision 1	



01 Third Floor Plan
1004 1:100 @ A3



Purpose of Issue:
FOR_COMMENT

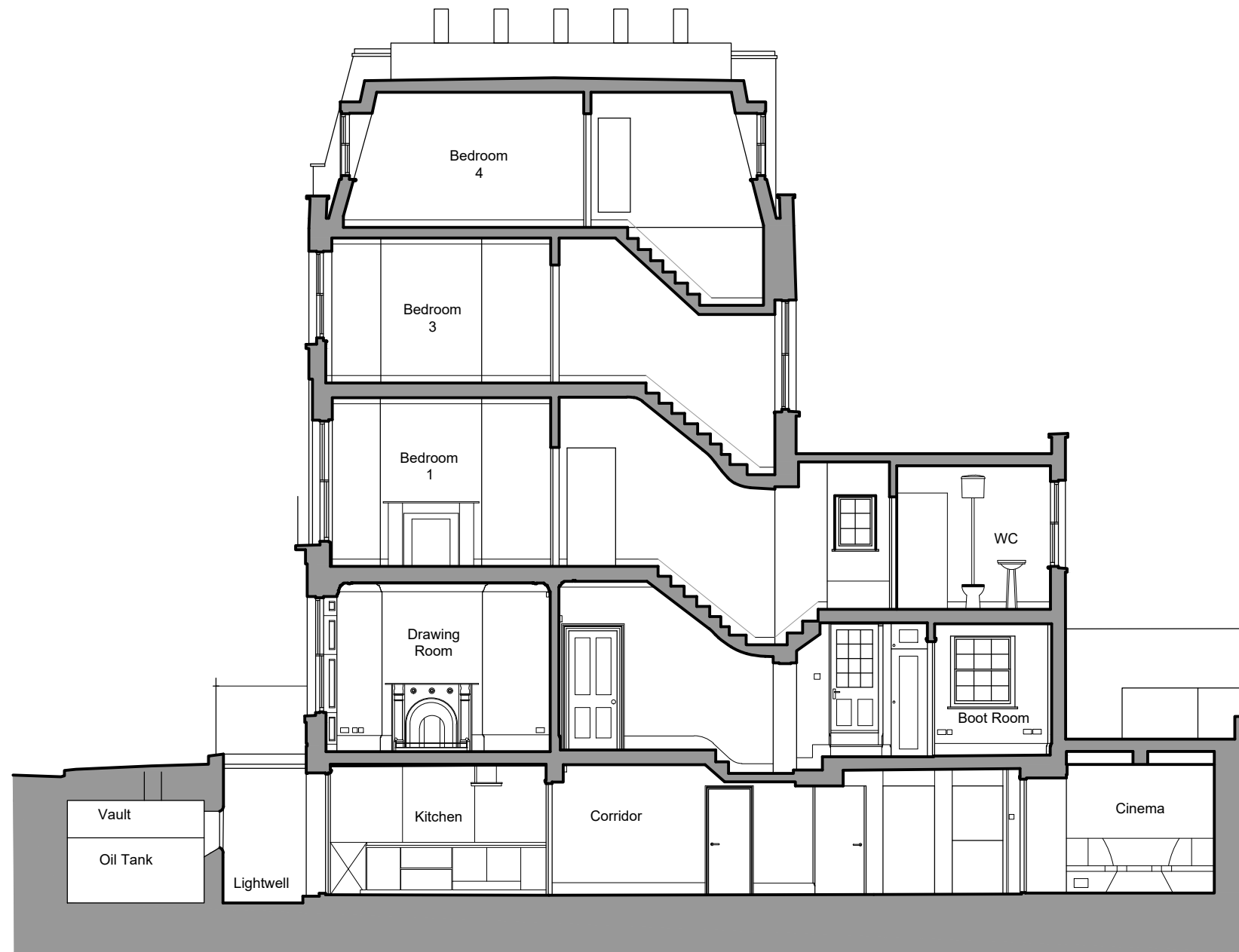
- Notes**
- Any dwg format drawing is to be read in conjunction with and at the scale of the accompanying pdf.
 - Where colours other than black or grey are used, the drawing must be plotted in colour.
 - For status 'C' (Construction) drawings all dimensions are to be checked on site by the contractor, scaling is for Local Authority purposes only.
 - Unless otherwise indicated, all dimensions are in millimeters.
 - All information on this drawing is to be read in conjunction with the relevant Donald Insall Associates specification and trade contractors' drawings and information by specialists.
 - In the event of any discrepancy, please contact us immediately.
 - This drawing may contain survey information by others and is to be used solely for the purposes for which it was issued.
 - These are uncontrolled documents issued for information purposes only. If you have any queries regarding the drawings, please contact DIA immediately.
 - Please note DIA cannot be held responsible for any errors arising from changes made to an uncontrolled dwg file.

Drawing Status

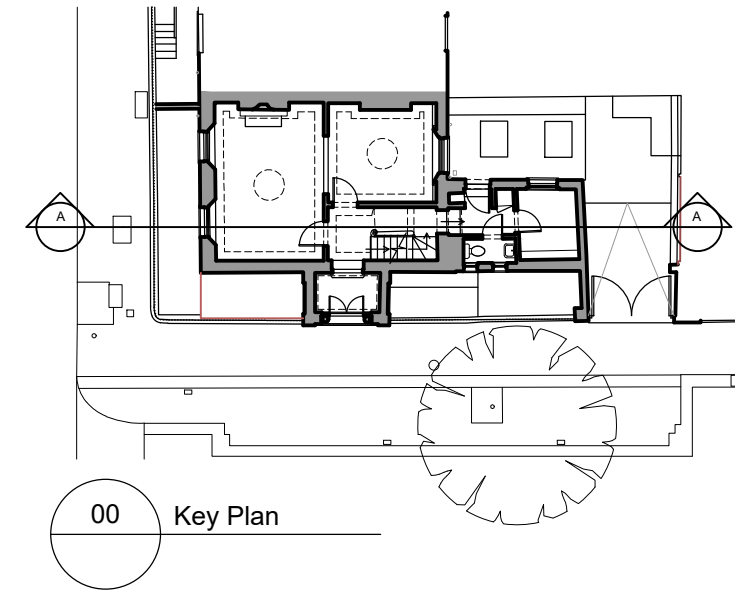
F	Feasibility
S	Sketch Design
P	Planning
B	Building Control
D	Design Development
M	Measurement
T	Tender
C	Construction
R	Record

Rev	Date	Dwn	Auth	Revision
1	31-01-20	-	TOB	Cost Estimate
0	24-10-19	EKN	TOB	Initial Issue

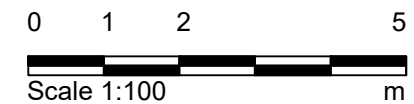
Donald Insall Associates Chartered Architects and Historic Building Consultants		12 Devonshire Street London W1G 7AB (+44) 020 7245 9888 london@insall-architects.co.uk	
1 Crestfield Street		Project	No
Third Floor Plan Existing		CS1.01	1004
Scale (A3)	Status	Revision	
1:100	P	1	



01 Section AA
1100 1:100 @ A3



00 Key Plan



Purpose of Issue:
FOR_COMMENT

Notes

- Any dwg format drawing is to be read in conjunction with and at the scale of the accompanying pdf.
- Where colours other than black or grey are used, the drawing must be plotted in colour.
- For status 'C' (Construction) drawings all dimensions are to be checked on site by the contractor, scaling is for Local Authority purposes only.
- Unless otherwise indicated, all dimensions are in millimeters.
- All information on this drawing is to be read in conjunction with the relevant Donald Insall Associates specification and trade contractors' drawings and information by specialists.
- In the event of any discrepancy, please contact us immediately.
- This drawing may contain survey information by others and is to be used solely for the purposes for which it was issued.
- These are uncontrolled documents issued for information purposes only. If you have any queries regarding the drawings, please contact DIA immediately.
- Please note DIA cannot be held responsible for any errors arising from changes made to an uncontrolled dwg file.

© 2019 DONALD INSALL ASSOCIATES LTD

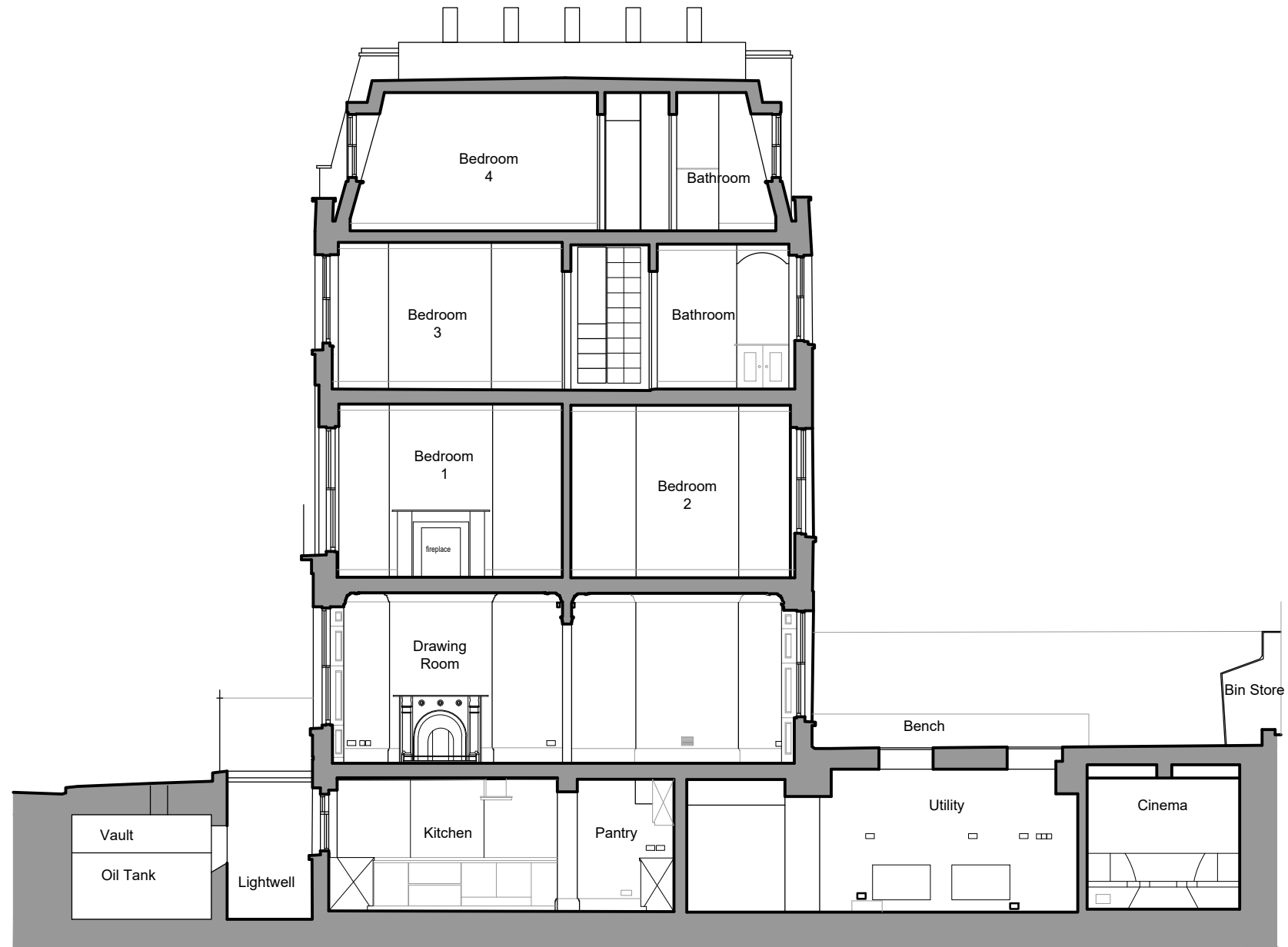
Rev	Date	Dwn	Auth	Revision
1	31-01-20	-	TOB	Cost Estimate
0	24-10-19	EKN	TOB	Initial Issue

Donald Insall Associates
Chartered Architects and Historic Building Consultants

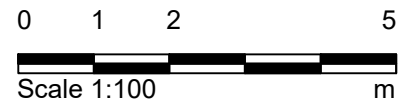
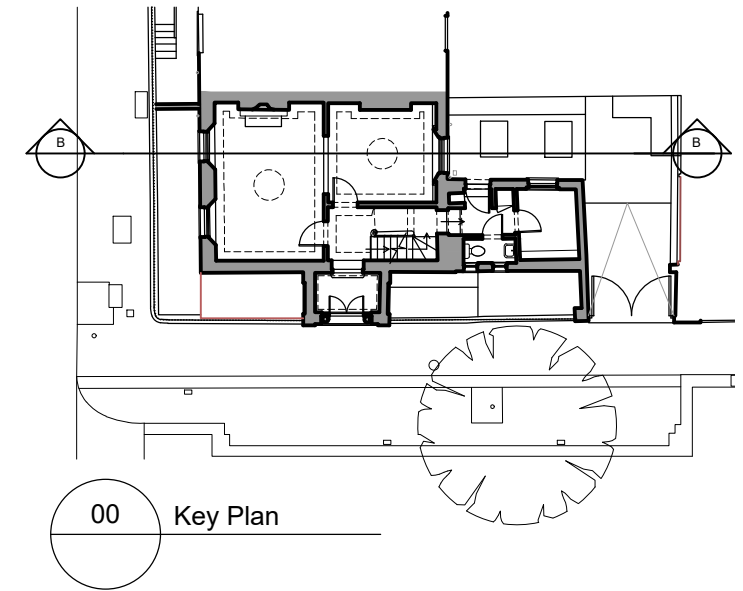
12 Devonshire Street
London W1G 7AB
(+44) 020 7245 9888
london@insall-architects.co.uk

1 Crestfield Street

Section AA Existing	Project CS1.01	No 1100
	Scale (A3) 1:100	Status P
		Revision 1



01 Section BB
1101 1:100 @ A3



Purpose of Issue:
FOR_COMMENT

- Notes
- Any dwg format drawing is to be read in conjunction with and at the scale of the accompanying pdf.
 - Where colours other than black or grey are used, the drawing must be plotted in colour.
 - For status 'C' (Construction) drawings all dimensions are to be checked on site by the contractor, scaling is for Local Authority purposes only.
 - Unless otherwise indicated, all dimensions are in millimeters.
 - All information on this drawing is to be read in conjunction with the relevant Donald Insall Associates specification and trade contractors' drawings and information by specialists.
 - In the event of any discrepancy, please contact us immediately.
 - This drawing may contain survey information by others and is to be used solely for the purposes for which it was issued.
 - These are uncontrolled documents issued for information purposes only. If you have any queries regarding the drawings, please contact DIA immediately.
 - Please note DIA cannot be held responsible for any errors arising from changes made to an uncontrolled dwg file.

Rev	Date	Dwn	Auth	Revision

Rev	Date	Dwn	Auth	Revision
1	31-01-20	-	TOB	Cost Estimate
0	24-10-19	EKN	TOB	Initial Issue

Rev	Date	Dwn	Auth	Revision

Donald Insall Associates Chartered Architects and Historic Building Consultants		12 Devonshire Street London W1G 7AB (+44) 020 7245 9888 london@insall-architects.co.uk	
1 Crestfield Street		Project CS1.01	No 1101
Section BB Existing		Scale (A3) 1:100	Status P
		Revision 1	



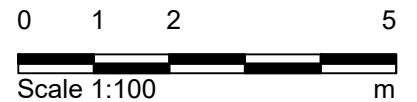
01 West Elevation
1200 1:100 @ A3



02 South Elevation
1200 1:100 @ A3



03 East Elevation
1200 1:100 @ A3



Purpose of Issue:
FOR_COMMENT

Notes

- Any dwg format drawing is to be read in conjunction with and at the scale of the accompanying pdf.
- Where colours other than black or grey are used, the drawing must be plotted in colour.
- For status 'C' (Construction) drawings all dimensions are to be checked on site by the contractor, scaling is for Local Authority purposes only.
- Unless otherwise indicated, all dimensions are in millimeters.
- All information on this drawing is to be read in conjunction with the relevant Donald Insall Associates specification and trade contractors' drawings and information by specialists.
- In the event of any discrepancy, please contact us immediately.
- This drawing may contain survey information by others and is to be used solely for the purposes for which it was issued.
- These are uncontrolled documents issued for information purposes only. If you have any queries regarding the drawings, please contact DIA immediately.
- Please note DIA cannot be held responsible for any errors arising from changes made to an uncontrolled dwg file.

© 2019 DONALD INSALL ASSOCIATES LTD

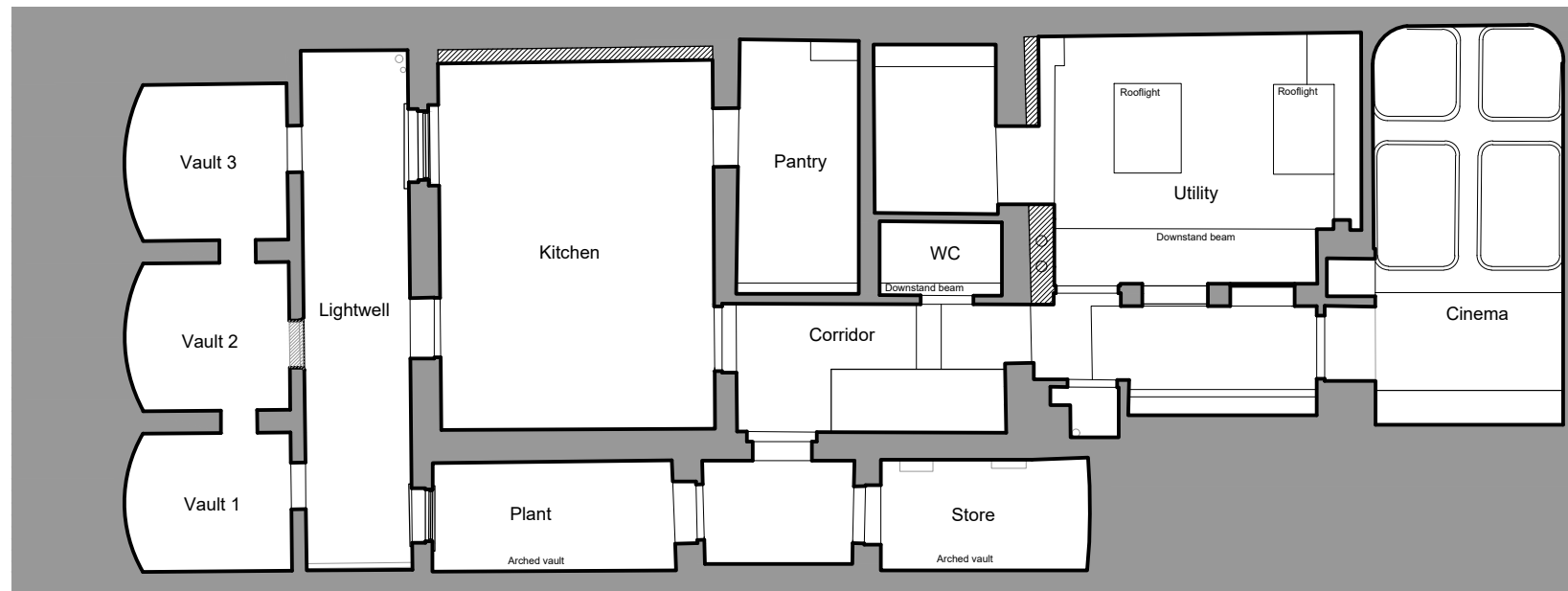
Rev	Date	Dwn	Auth	Revision
1	31-01-20	-	TOB	Cost Estimate
0	24-10-19	EKN	TOB	Initial Issue

Donald Insall Associates
Chartered Architects and Historic Building Consultants

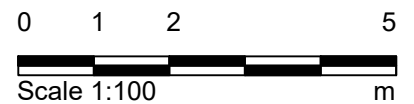
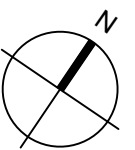
12 Devonshire Street
London W1G 7AB
(+44) 020 7245 9888
london@insall-architects.co.uk

1 Crestfield Street

Elevations Existing	Project CS1.01	No 1200
	Scale (A3) 1:100	Status P Revision 0



01 Basement Reflected Ceiling Plan
1500 1:100 @ A3



Purpose of Issue:
FOR_COMMENT

Notes

- Any dwg format drawing is to be read in conjunction with and at the scale of the accompanying pdf.
- Where colours other than black or grey are used, the drawing must be plotted in colour.
- For status 'C' (Construction) drawings all dimensions are to be checked on site by the contractor, scaling is for Local Authority purposes only.
- Unless otherwise indicated, all dimensions are in millimeters.
- All information on this drawing is to be read in conjunction with the relevant Donald Insall Associates specification and trade contractors' drawings and information by specialists.
- In the event of any discrepancy, please contact us immediately.
- This drawing may contain survey information by others and is to be used solely for the purposes for which it was issued.
- These are uncontrolled documents issued for information purposes only. If you have any queries regarding the drawings, please contact DIA immediately.
- Please note DIA cannot be held responsible for any errors arising from changes made to an uncontrolled dwg file.

© 2019 DONALD INSALL ASSOCIATES LTD

Rev	Date	Dwn	Auth	Revision
1	31-01-20	-	TOB	Cost Estimate
0	24-10-19	EKN	TOB	Initial Issue

Donald Insall Associates
Chartered Architects and Historic Building Consultants

12 Devonshire Street
London W1G 7AB
(+44) 020 7245 9888
london@insall-architects.co.uk

1 Crestfield Street

Project	CS1.01	No	1500
Scale (A3)	1:100	Status	P
		Revision	1

Basement Reflected Ceiling Plan
Existing