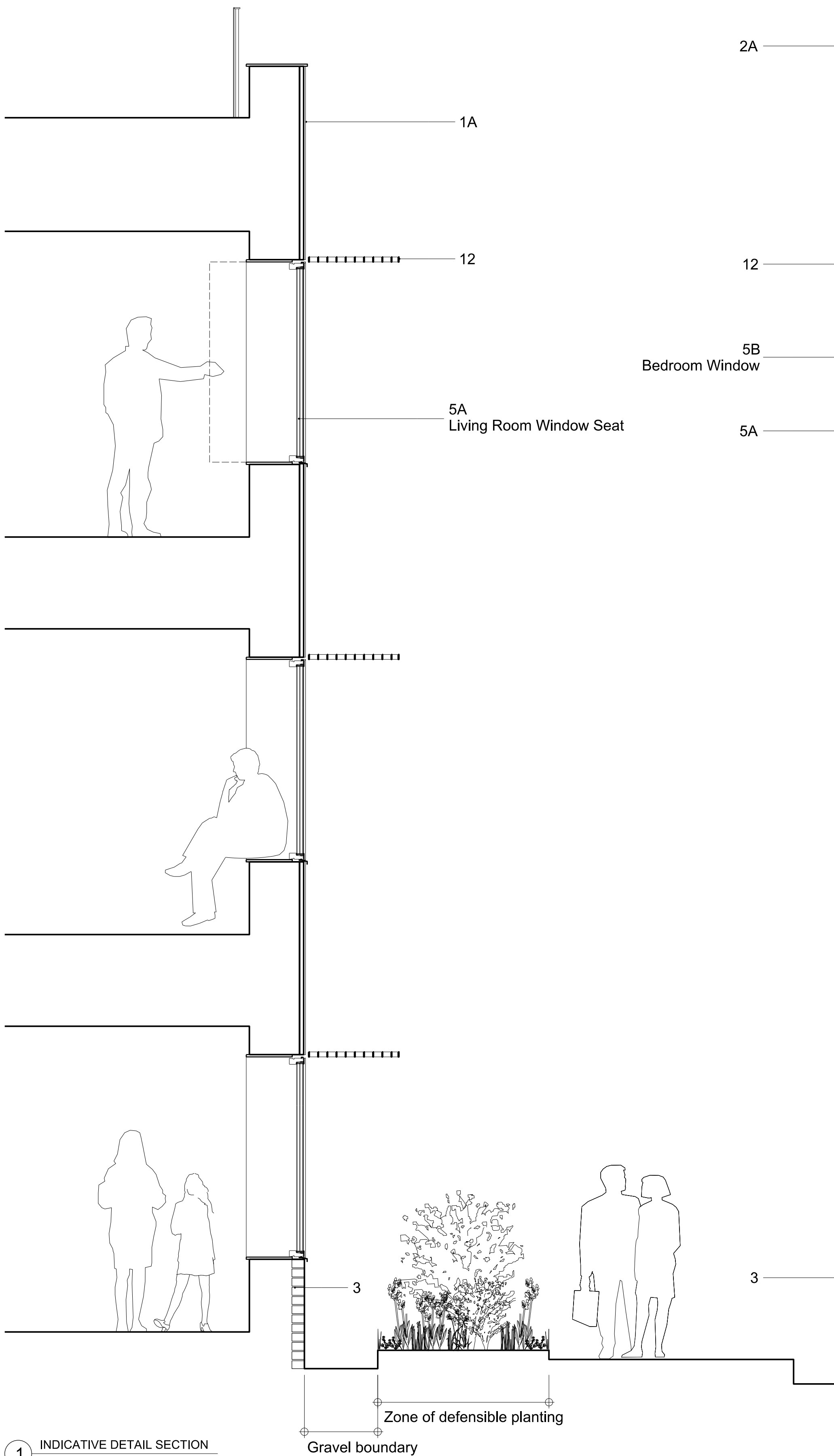


2 INDICATIVE WINDOW DETAIL
EXTERNAL FACADE



1 INDICATIVE DETAIL SECTION
EXTERNAL FACADE

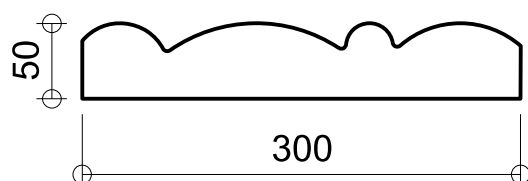


2 INDICATIVE MATERIAL STUDY IN ELEVATION
EXTERNAL FACADE

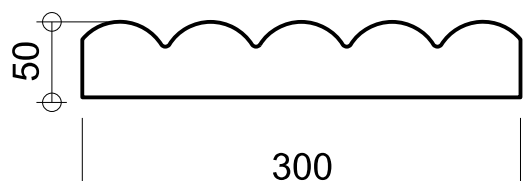
Material Key

- 1A. Terracotta tile, single glaze. Profile type A. Colour: RAL 130-50-30 or similar approved
- 1B. Terracotta tile, single glaze. Profile type B. Colour: RAL 130-50-30 or similar approved
- 2A. Perforated aluminium cladding and steel structure. Anodised finish. Colour: Analok 543 by United Anodisers, or similar approved
- 2B. Solid aluminium cladding and steel structure. Anodised finish. Colour: Analok 543 by United Anodisers, or similar approved
3. Facing brick. Stack bonded with dark grey mortar to match. Staffordshire Smooth Blue, or similar approved
4. Rendered finish. Roughness level 3. Colour: 36436 Sto Colour System, or similar approved
5. Aluminium / timber composite framed window with aluminium louvered vent panel. Anodised finish. Colour: Analok 543 by United Anodisers, or similar approved
- 5A. Type A: Fixed window, flush with the facade.
- 5B. Type B: Fixed window, recessed with aluminium reveal surround, finished to match window frame.
- 5C. Type C: Inward opening window, recessed with aluminium window reveal surround, finished to match window frame.
6. Aluminium / timber composite framed window, fixed. Anodised finish. Colour: Analok 543 by United Anodisers, or similar approved
7. Steel framed glazed curtain wall and door system to Common Room and Main Entrance. Finish: PPC, RAL to match anodised finish (see 2)
8. PPC steel door for emergency access and escape only. Finish: PPC, RAL to match anodised finish (see 2)
9. PPC steel louvered door. Finish: PPC, RAL to match anodised finish (see 2)
10. Aluminium / timber composite entrance door, with glazed top hung opening fanlight above. Finish: Painted RAL 030-70-20
11. Aluminium / timber composite framed door with fixed aluminium louvered vent panel at high and low level. PPC, RAL to match adjacent rendered finish, or similar approved (see 4)
12. PPC steel 'Elefant Grating' brise soleil. RAL to match anodised finish (see 2)
13. Air brick. To match brick finish.
14. Signage. Pressed metal letters, anodised finish. Colour: Analok 543 by United Anodisers, or similar approved
15. Steel walkway structure. Finish: PPC, RAL 9010
16. PPC Steel Railing. Finish: PPC, RAL 9010
17. Wall Luminaire adjacent to entrance doors. Nyx Wall 190 from Focus by DW Windsor, or similar approved. Finish: Corten Brown
18. Fully glazed door to communal stair. Finish: PPC, RAL to match anodised finish (see 2)

1A
Tile Profile A in plan:



1B
Tile profile B in plan:



All drawings to be read in conjunction with specifications, schedules and all other consultant information.

Do not scale from this drawing. Use written dimensions only. All dimensions to be checked on site. This drawing is based on dimensional survey information provided by others. Bell Phillips Architects cannot accept responsibility for the accuracy of this survey information.

Any errors or omissions to be reported to Bell Phillips Architects immediately, prior to work being carried out.

This drawing remains the copyright of Bell Phillips Architects.

Notes



Key Plan

| Rev | Issued by | Description | Date |
|-----------|-----------|---------------------|----------|
| P1 | AT | PLANNING SUBMISSION | 07.07.20 |
| REVISIONS | | | |

Project 0614 CHESTER ROAD

PROPOSED EXTERNAL FACADE STUDY

| Date | Drawn by | Checked by | Scale at A1 |
|-------|----------|------------|-------------|
| 07.20 | FH / AT | AT | 1 : 25 |

Unit 305, Metropolitan Wharf
70 Wapping Wall
London E1W 3SS

T 020 7234 9330
E info@bellphillips.com
W www.bellphillips.com

Status PLANNING

| Drawing Number | Revision |
|----------------|----------|
| 0614-BPA-06950 | P1 |