

### Material Key

1A. Terracotta tile, single glaze. Profile type A. Colour: RAL 130-50-30 or similar approved	7. Steel framed glazed curtain wall and door system to Common Room and Main Entrance. Finish: PPC, RAL to match anodised finish (see 2)
1B. Terracotta tile, single glaze. Profile type B. Colour: RAL 130-50-30 or similar approved	8. PPC steel gate for emergency access and escape only. Finish: PPC, RAL to match anodised finish (see 2)
2A. Perforated aluminium cladding and steel structure. Anodised finish. Colour: Analok 543 by United Anodisers, or similar approved	9. PPC steel louvered door. Finish: PPC, RAL to match anodised finish (see 2)
2B. Solid aluminium cladding and steel structure. Anodised finish. Colour: Analok 543 by United Anodisers, or similar approved	10. Aluminium / timber composite entrance door, with glazed top hung opening fanlight above. Finish: Painted RAL 030-70-20
3. Facing brick. Stack bonded with dark grey mortar to match. Staffordshire Smooth Blue, or similar approved.	11. Aluminium / timber composite framed door with fixed aluminium louvered vent panel at high and low level. PPC, RAL to match adjacent rendered finish, or similar approved (see 4)
4. Rendered finish. Roughness level 3. Colour: 36436 Sto Colour System, or similar approved	12. PPC steel 'Elefant Grating' brise soleil. RAL to match anodised finish (see 2)
5. Aluminium / timber composite framed window with aluminium louvered vent panel. Anodised finish. Colour: Analok 543 by United Anodisers, or similar approved	13. Air brick. To match brick finish.
5A. Type A: Fixed window, flush with the facade.	14. Signage. Pressed metal letters, anodised finish. Colour: Analok 543 by United Anodisers, or similar approved
5B. Type B: Fixed window, recessed with aluminium reveal surround, finished to match window frame.	15. Steel walkway structure. Finish: PPC, RAL 9010
5C. Type C: Inward opening window, recessed with aluminium window reveal surround, finished to match window frame.	16. PPC Steel Railing. Finish: PPC, RAL 9010
6. Aluminium / timber composite framed window, fixed. Anodised finish. Colour: Analok 543 by United Anodisers, or similar approved	17. Wall Luminaire adjacent to entrance doors. Nyx Wall 190 from Focus by DW Windsor, or similar approved. Finish: Corten Brown
	18. Fully glazed door to communal stair. Finish: PPC, RAL to match anodised finish (see 2)

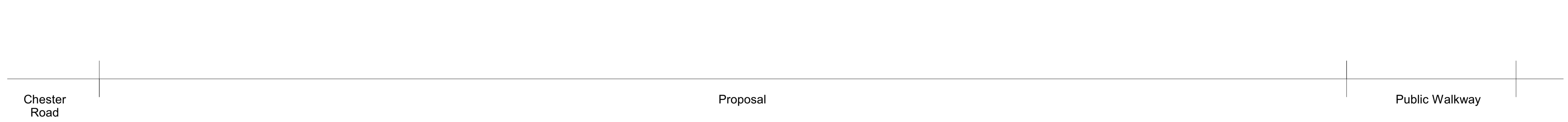
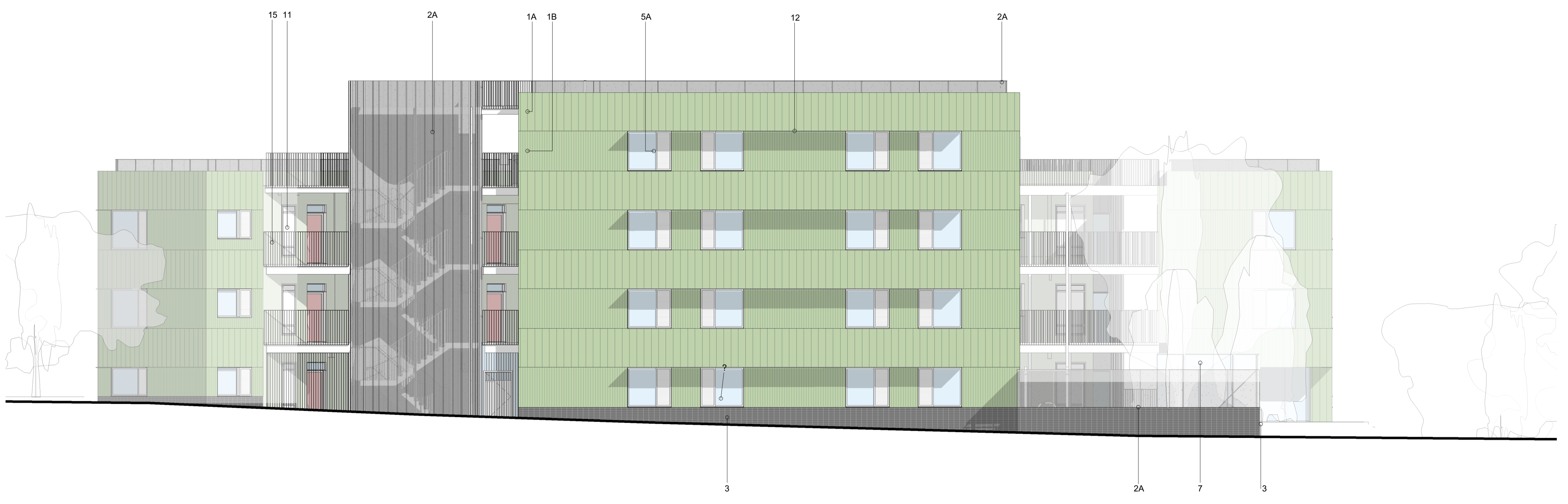
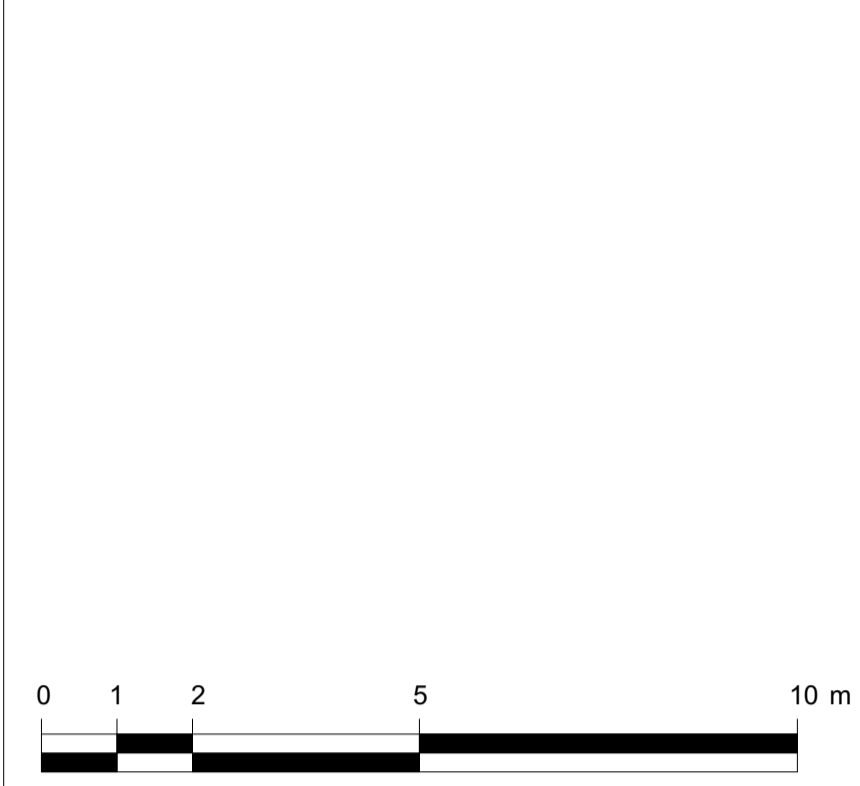
All drawings to be read in conjunction with specifications, schedules and all other consultant information.

Do not scale from this drawing. Use written dimensions only. All dimensions to be checked on site. This drawing is based on dimensional survey information provided by others. Bell Phillips Architects cannot accept responsibility for the accuracy of this survey information.

Any errors or omissions to be reported to Bell Phillips Architects immediately, prior to work being carried out.

This drawing remains the copyright of Bell Phillips Architects.

### Notes



REVISIONS		
Rev	Issued by	Description
P1		Planning Submission
		07.07.20

Project 0614 CHESTER ROAD

Title PROPOSED EAST ELEVATION

Date 07.20 Drawn by AW/FH Checked by AT Scale at A1 1 : 100

**BELL PHILLIPS ARCHITECTS**  
 Unit 305, Metropolitan Wharf T 020 7234 9330  
 70 Wapping Wall E info@bellphillips.com  
 London E1W 3SS W www.bellphillips.com

Status **PLANNING**

Drawing Number 0614-BPA-06261 Revision P1