

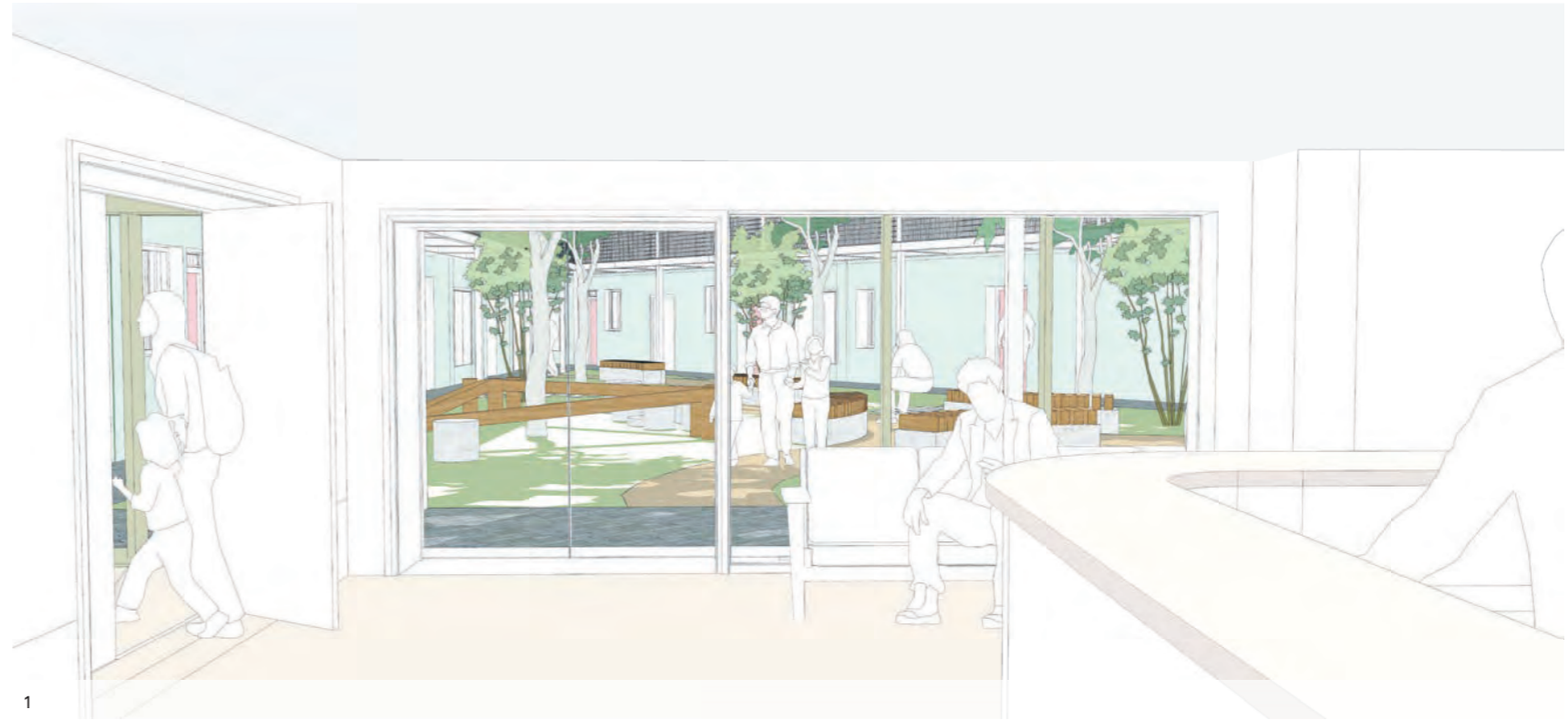
5 Proposal

5.9 Entrance and Amenity

The existing communal garden on the site and building has a positive sense of connection on entering the building with the communal garden beyond.

In the proposed design, this strong sense of connection on entering the building is emulated. All dwellings and vertical circulation to upper level walkways are accessed directly from the courtyard, activating this space at the heart of the proposal.

The view opposite gives an impression of the entrance reception area, with the common room to the left and reception desk to the right.



Key to images

1. Illustrative view from within the reception at ground level, looking south.
2. Photographs of the existing communal garden.

5.10 Landscape Proposal

Refer to the Landscape Strategy Document prepared by Anna French Associates for detailed information on the proposed landscape design. Key information has been extracted from this report and included in this section of the DAS.

5.10.1 Concept: Woodland Atmospheres

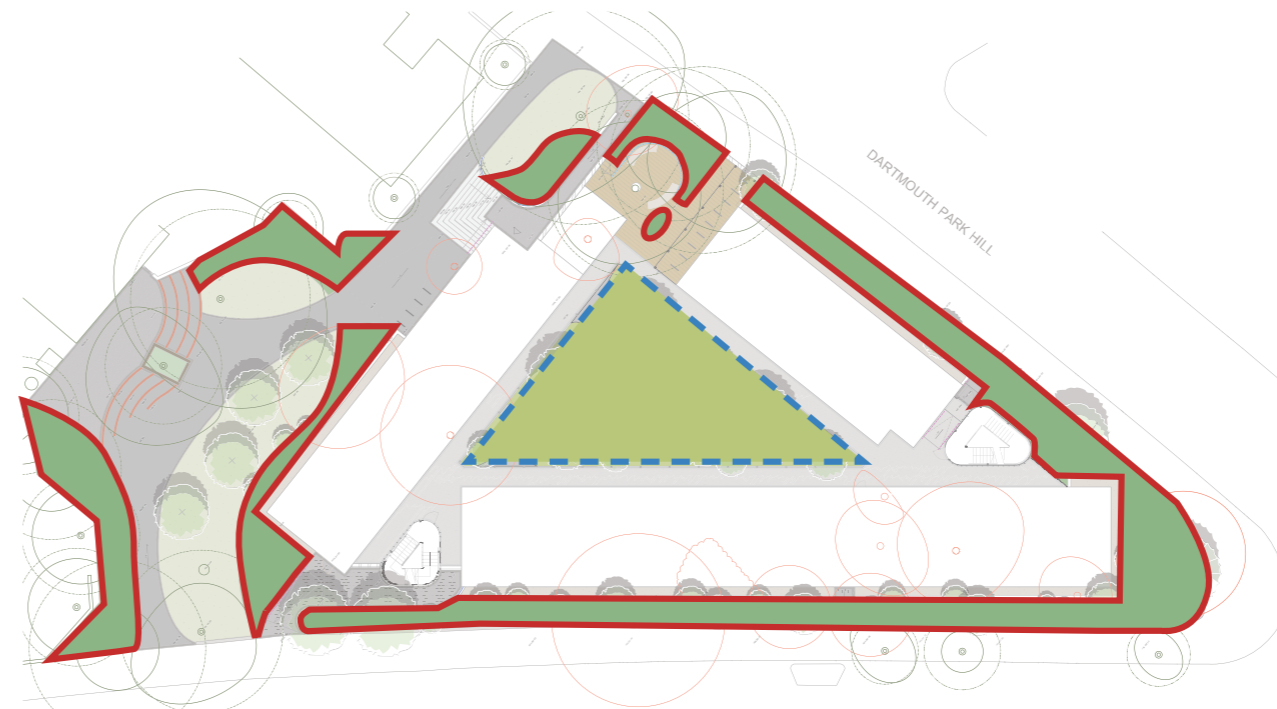
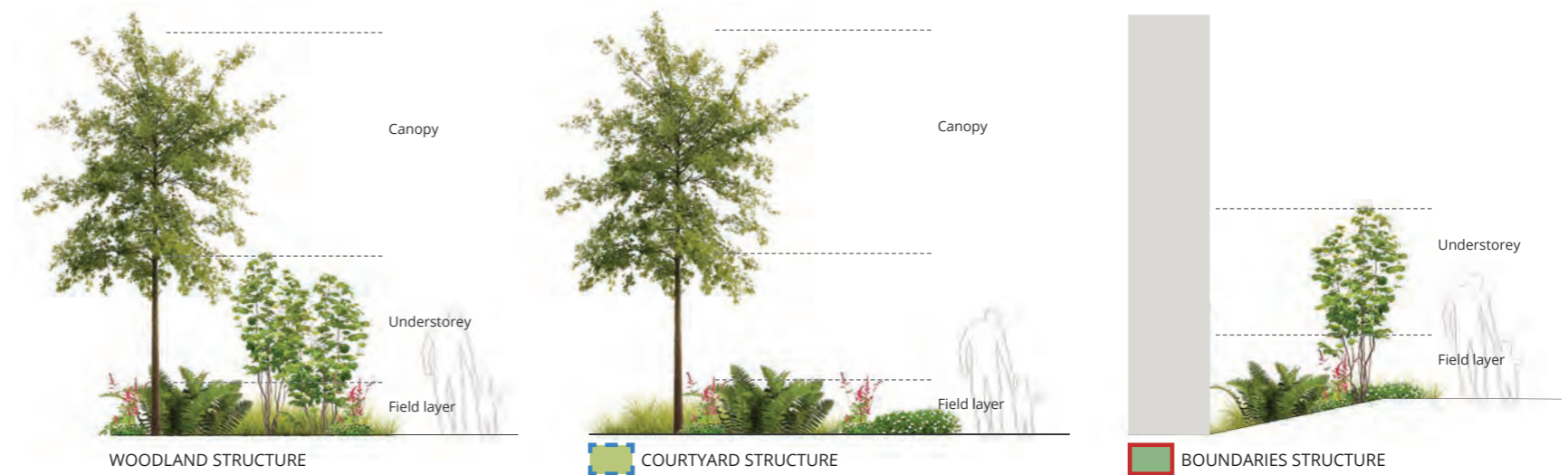
The typical woodland structure can be divided in 3 layers:

- The Canopy: made of the tallest and more mature trees that cast shade over the other layers.
- The Understorey: also called shrub layer is composed of more younger individuals of mature trees along with smaller trees & shrubs that are adapted to lower light conditions.
- The Field Layer: with small plants such as ferns, flowering plants & grasses.

The concept design for this project aims to use that typical structure as a base to give the whole area a woodland feel.

The Courtyard structure recreates mainly the Canopy and Field layer from the woodland structure in order to make a more open/ less enclosed space where people will get a clear view from everywhere. Allowing kids to be visible to their parents as well.

The Boundaries structure is a bit different as it serves another purpose of creating a protective barrier from the public path/road. In order to give that protective feel the structure here uses mostly the Understorey & Field layers. This will allow the creation of a more enclosed/intimate feel to the flats with less visibility from the road towards the building.



5 Proposal

5.10 Landscape Proposal

5.10.2 Landscape Layout

In order to create a design that will meet expectations of residents and council, we had to take in account different considerations and create a scheme to match these.

Depending on the use of each area the landscape design was thought slightly differently so it adapts to either the public or private space, whether the need was for a more open or enclosed space.

Public Pedestrian Pathway

The aim for this area is to reinforce the existing public right of way and make it more accessible by removing the step access along Dartmouth Park Hill and replacing it with a ramp access. Movement for cyclists and parents with buggies will be easier.

Another design intent is to keep the mature trees along that path as they constitute a valuable component of the streetscape and contribute to the character of the area.

The design aims to improve this access by creating a more open and attractive space that will act as a small public park. By extending the green areas (including lawn and planting beds) along the path it offers an enjoyable and pleasant walk under the tree canopy.

Green Boundaries

Between the building and the road, these area will create a soft buffer between the public roads and the buildings.

Acting as a protective barrier, the planting will offer more intimacy and a nice background to the residents, from their flat.

Street trees are proposed where possible to contribute to the overall character of the area.

The former Horse Chestnut Tree located at the corner of Chester Road and Dartmouth Park Hill was removed in April 2020 after a prolonged monitoring process to check on the tree's health going back to 2018. As part of the landscape proposal a new tree will be planted in this location; the Arboricultural Consultant recommends the species *Metasequoia Glyptostroboides* (Dawn Redwood).

