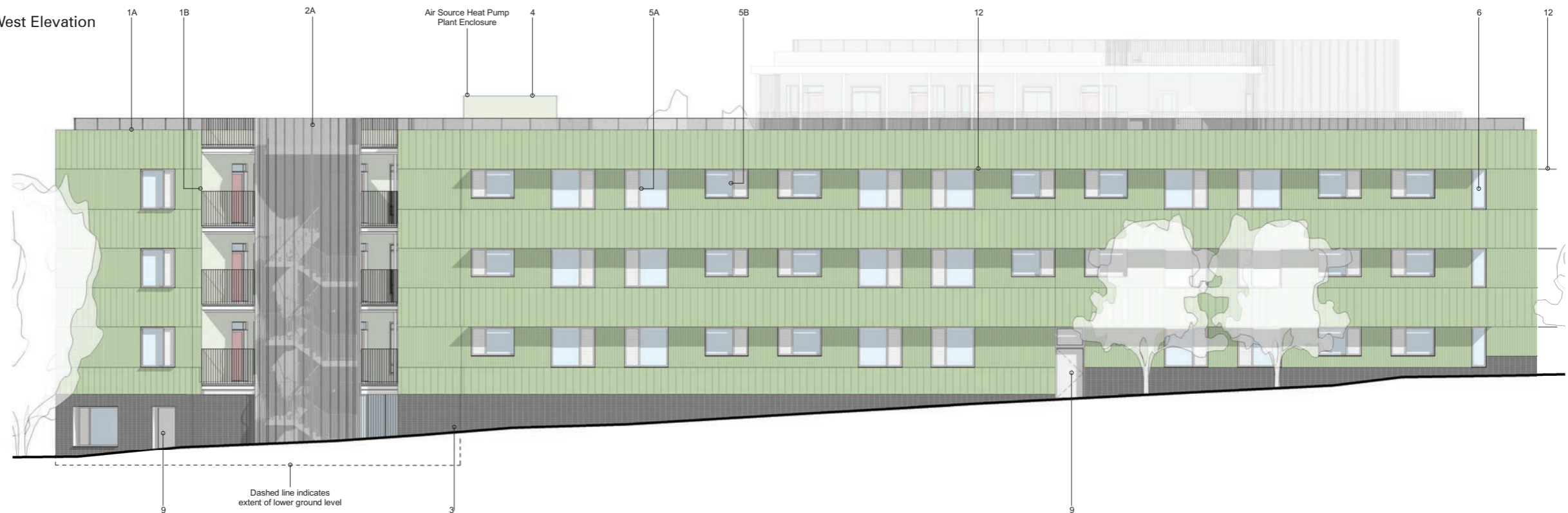


5 Proposal

5.6 Elevational Study

5.6.5 Proposed Elevations

South-West Elevation



Material Key

- 1A
Terracotta tile, single glaze.
Profile type A.
Colour: RAL 130-50-30 or similar approved
- 1B
Terracotta tile, single glaze.
Profile type B.
Colour: RAL 130-50-30 or similar approved
- 2A
Perforated aluminium cladding and steel structure.
Anodised finish.
Colour: Analok 543 by United Anodisers, or similar approved
- 2B
Solid aluminium cladding and steel structure.
Anodised finish.
Colour: Analok 543 by United Anodisers, or similar approved
- 3
Facing brick.
Stack bonded with dark grey mortar to match.
Staffordshire Smooth Blue, or similar approved.

- 4
Rendered finish.
Roughness level 3.
Colour: 36436 Sto Colour System, or similar approved
- 5
Aluminium / timber composite framed window with aluminium louvered vent panel.
Anodised finish.
Colour: Analok 543 by United Anodisers, or similar approved
- 5A
Type A: Fixed window, flush with the facade.
- 5B
Type B: Fixed window, recessed with aluminium reveal surround, finished to match window frame.
- 5C
Type C: Inward opening window, recessed with aluminium window reveal surround, finished to match window frame.
- 6
Aluminium / timber composite framed window, fixed. Anodised finish.
Colour: Analok 543 by United Anodisers, or similar approved

- 7
Steel framed glazed curtain wall and door system to Common Room and Main Entrance.
Finish: PPC, RAL to match anodised finish (see 2)
- 8
PPC steel door for emergency access and escape only.
Finish: PPC, RAL to match anodised finish (see 2)
- 9
PPC steel louvered door.
Finish: PPC, RAL to match anodised finish (see 2)
- 10
Aluminium / timber composite entrance door, with glazed top hung opening fanlight above.
Finish: Painted RAL 030-70-20
- 11
Aluminium / timber composite framed window with aluminium louvered vent panel.
Anodised finish.
Colour: Analok 543 by United Anodisers, or similar approved

- 12
PPC steel 'Elefant Grating' brise soleil.
RAL to match anodised finish (see 2)
- 13
Air brick.
To match brick finish.
- 14
Signage. Pressed metal letters, anodised finish.
Colour: Analok 543 by United Anodisers, or similar approved
- 15
Steel walkway structure.
Finish: PPC, RAL 9010
- 16
Steel railing.
Finish: PPC, RAL 9010
- 17
Wall Luminaire adjacent to entrance doors.
Nyx Wall 190 from Focus by DW Windsor, or similar approved.
Finish: Corten Brown
- 18
Fully glazed door to communal stair
Finish: PPC, RAL to match anodised finish (see 2)

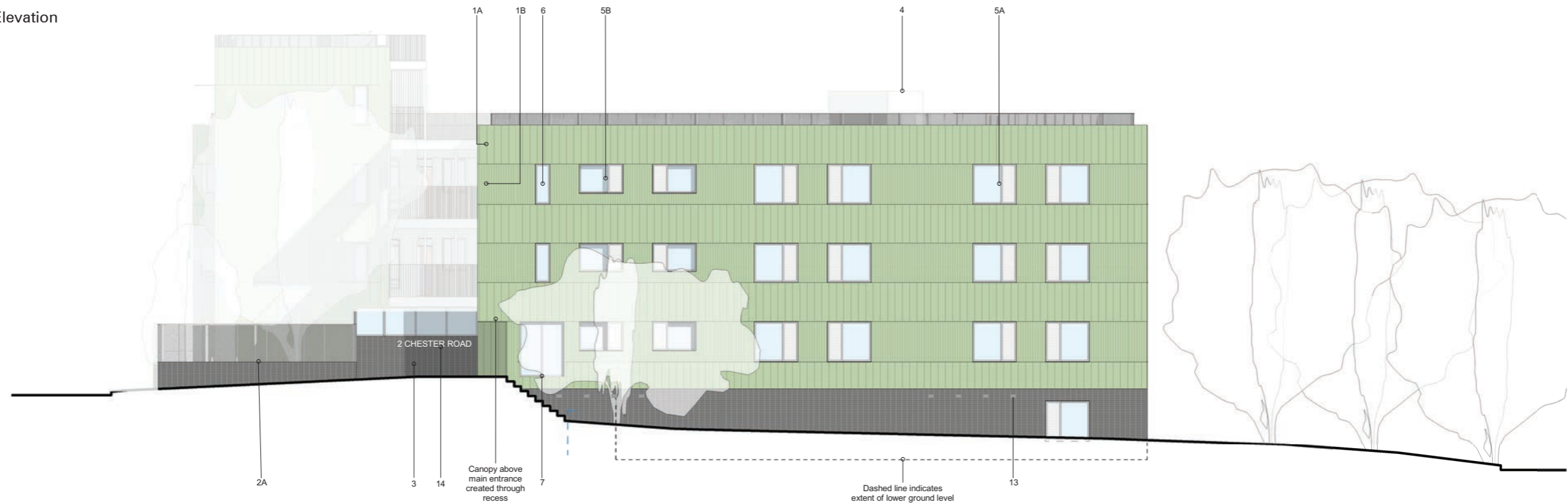
East Elevation



5 Proposal

5.6 Elevational Study

North Elevation



Material Key

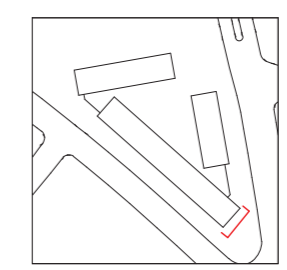
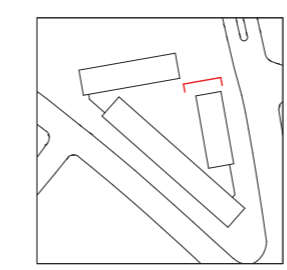
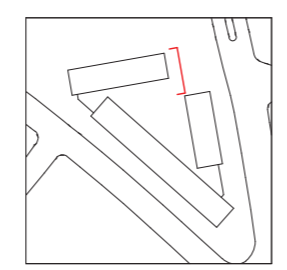
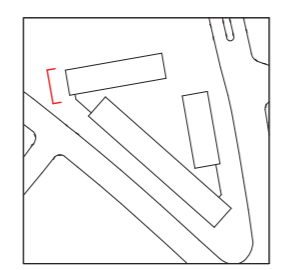
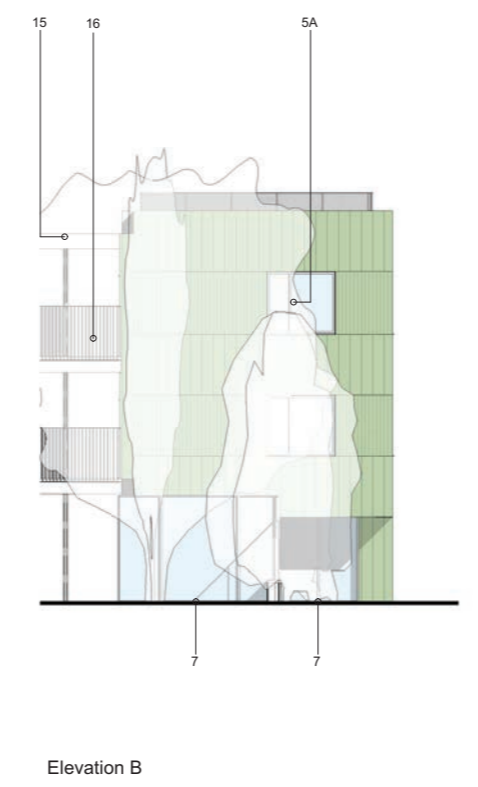
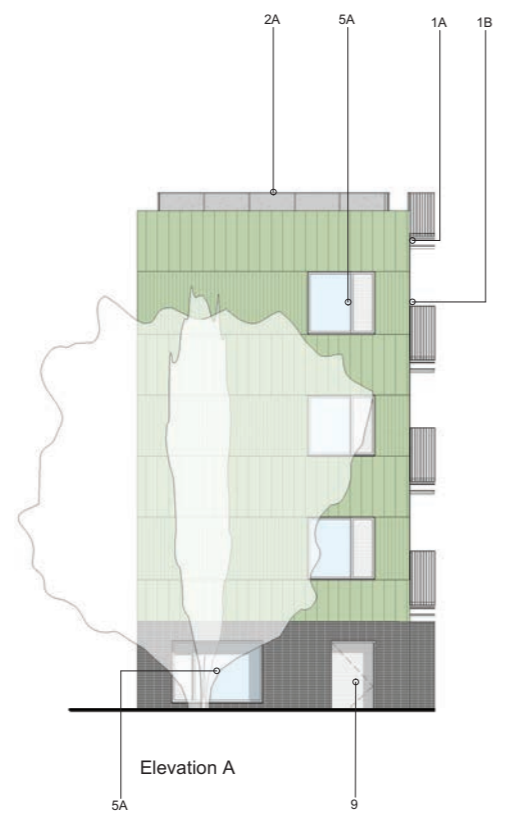
- 1A**
Terracotta tile, single glaze.
Profile type A.
Colour: RAL 130-50-30 or similar approved
- 1B**
Terracotta tile, single glaze.
Profile type B.
Colour: RAL 130-50-30 or similar approved
- 2A**
Perforated aluminium cladding and steel structure.
Anodised finish.
Colour: Analok 543 by United Anodisers, or similar approved
- 2B**
Solid aluminium cladding and steel structure.
Anodised finish.
Colour: Analok 543 by United Anodisers, or similar approved
- 3**
Facing brick.
Stack bonded with dark grey mortar to match. Staffordshire Smooth Blue, or similar approved.

- 4**
Rendered finish.
Roughness level 3.
Colour: 36436 Sto Colour System, or similar approved
- 5**
Aluminium / timber composite framed window with aluminium louvered vent panel.
Anodised finish.
Colour: Analok 543 by United Anodisers, or similar approved
- 5A**
Type A: Fixed window, flush with the facade.
- 5B**
Type B: Fixed window, recessed with aluminium reveal surround, finished to match window frame.
- 5C**
Type C: Inward opening window, recessed with aluminium window reveal surround, finished to match window frame.
- 6**
Aluminium / timber composite framed window, fixed. Anodised finish.
Colour: Analok 543 by United Anodisers, or similar approved

- 7**
Steel framed glazed curtain wall and door system to Common Room and Main Entrance.
Finish: PPC, RAL to match anodised finish (see 2)
- 8**
PPC steel door for emergency access and escape only.
Finish: PPC, RAL to match anodised finish (see 2)
- 9**
PPC steel louvered door.
Finish: PPC, RAL to match anodised finish (see 2)
- 10**
Aluminium / timber composite entrance door, with glazed top hung opening fanlight above.
Finish: Painted RAL 030-70-20
- 11**
Aluminium / timber composite framed window with aluminium louvered vent panel.
Anodised finish.
Colour: Analok 543 by United Anodisers, or similar approved

- 12**
PPC steel 'Elefant Grating' brise soleil.
RAL to match anodised finish (see 2)
- 13**
Air brick.
To match brick finish.
- 14**
Signage. Pressed metal letters, anodised finish.
Colour: Analok 543 by United Anodisers, or similar approved
- 15**
Steel walkway structure.
Finish: PPC, RAL 9010
- 16**
Steel railing.
Finish: PPC, RAL 9010
- 17**
Wall Luminaire adjacent to entrance doors.
Nyx Wall 190 from Focus by DW Windsor, or similar approved.
Finish: Corten Brown
- 18**
Fully glazed door to communal stair
Finish: PPC, RAL to match anodised finish (see 2)

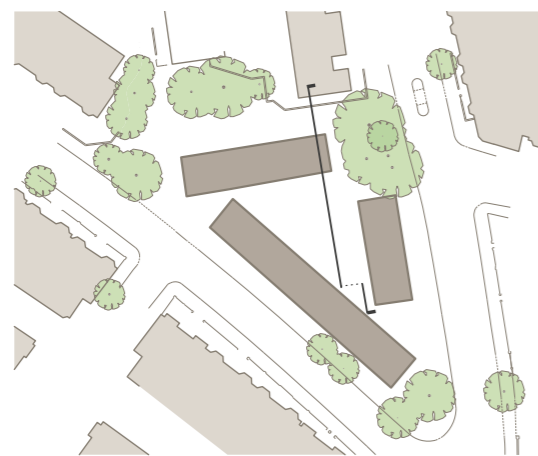
Corner Elevations



5 Proposal

5.6 Elevational Study

Internal West Elevation



Material Key

- 1A**
Terracotta tile, single glaze.
Profile type A.
Colour: RAL 130-50-30 or similar approved
- 1B**
Terracotta tile, single glaze.
Profile type B.
Colour: RAL 130-50-30 or similar approved
- 2A**
Perforated aluminium cladding and steel structure.
Anodised finish.
Colour: Analok 543 by United Anodisers, or similar approved
- 2B**
Solid aluminium cladding and steel structure.
Anodised finish.
Colour: Analok 543 by United Anodisers, or similar approved
- 3**
Facing brick.
Stack bonded with dark grey mortar to match. Staffordshire Smooth Blue, or similar approved.

- 4**
Rendered finish.
Roughness level 3.
Colour: 36436 Sto Colour System, or similar approved
- 5**
Aluminium / timber composite framed window with aluminium louvered vent panel.
Anodised finish.
Colour: Analok 543 by United Anodisers, or similar approved
- 5A**
Type A: Fixed window, flush with the facade.
- 5B**
Type B: Fixed window, recessed with aluminium reveal surround, finished to match window frame.
- 5C**
Type C: Inward opening window, recessed with aluminium window reveal surround, finished to match window frame.
- 6**
Aluminium / timber composite framed window, fixed. Anodised finish.
Colour: Analok 543 by United Anodisers, or similar approved

- 7**
Steel framed glazed curtain wall and door system to Common Room and Main Entrance.
Finish: PPC, RAL to match anodised finish (see 2)
- 8**
PPC steel door for emergency access and escape only.
Finish: PPC, RAL to match anodised finish (see 2)
- 9**
PPC steel louvered door.
Finish: PPC, RAL to match anodised finish (see 2)
- 10**
Aluminium / timber composite entrance door, with glazed top hung opening fanlight above.
Finish: Painted RAL 030-70-20
- 11**
Aluminium / timber composite framed window with aluminium louvered vent panel.
Anodised finish.
Colour: Analok 543 by United Anodisers, or similar approved

- 12**
PPC steel 'Elefant Grating' brise soleil.
RAL to match anodised finish (see 2)
- 13**
Air brick.
To match brick finish.
- 14**
Signage. Pressed metal letters, anodised finish.
Colour: Analok 543 by United Anodisers, or similar approved
- 15**
Steel walkway structure.
Finish: PPC, RAL 9010
- 16**
Steel railing.
Finish: PPC, RAL 9010
- 17**
Wall Luminaire adjacent to entrance doors.
Nyx Wall 190 from Focus by DW Windsor, or similar approved.
Finish: Corten Brown
- 18**
Fully glazed door to communal stair
Finish: PPC, RAL to match anodised finish (see 2)

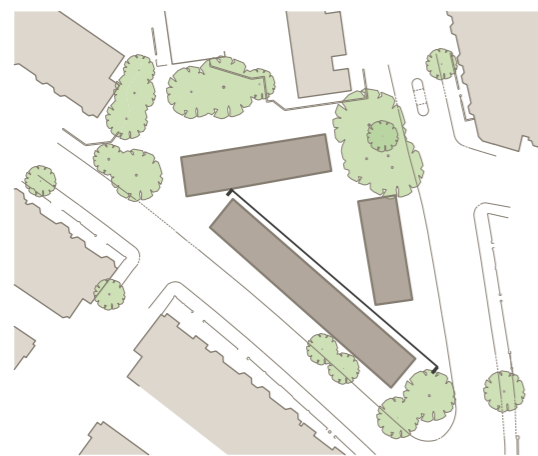
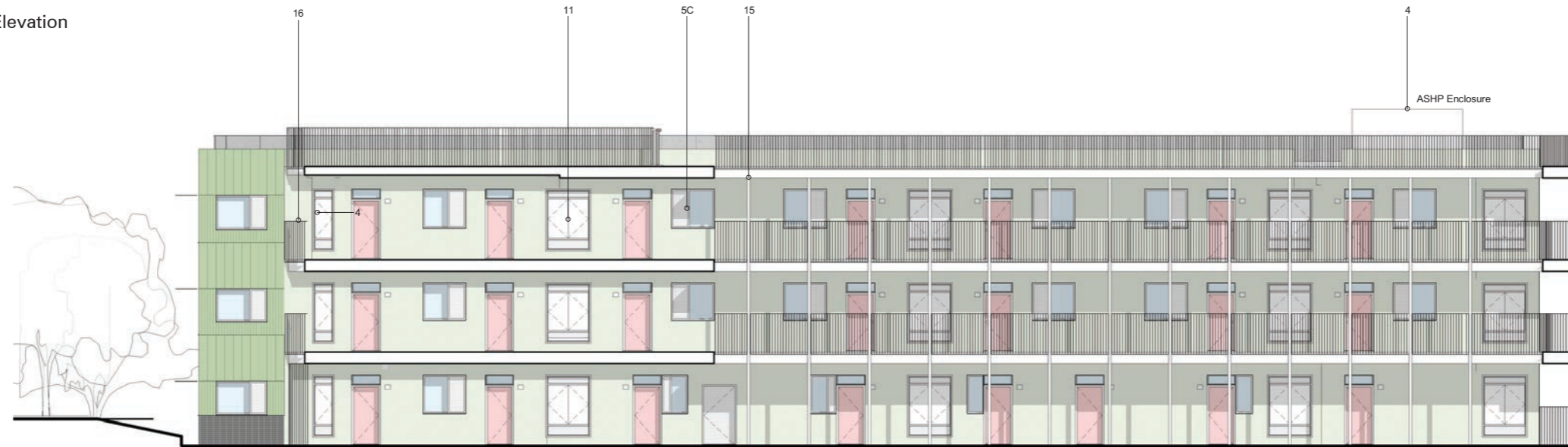
Internal South Elevation



5 Proposal

5.6 Elevational Study

Internal North East Elevation



Material Key

1A
Terracotta tile, single glaze.
Profile type A.
Colour: RAL 130-50-30 or similar approved

1B
Terracotta tile, single glaze.
Profile type B.
Colour: RAL 130-50-30 or similar approved

2A
Perforated aluminium cladding and steel structure.
Anodised finish.
Colour: Analok 543 by United Anodisers, or similar approved

2B
Solid aluminium cladding and steel structure.
Anodised finish.
Colour: Analok 543 by United Anodisers, or similar approved

3
Facing brick.
Stack bonded with dark grey mortar to match.
Staffordshire Smooth Blue, or similar approved.

4
Rendered finish.
Roughness level 3.
Colour: 36436 Sto Colour System, or similar approved

5
Aluminium / timber composite framed window with aluminium louvered vent panel.
Anodised finish.
Colour: Analok 543 by United Anodisers, or similar approved

5A
Type A: Fixed window, flush with the facade.

5B
Type B: Fixed window, recessed with aluminium reveal surround, finished to match window frame.

5C
Type C: Inward opening window, recessed with aluminium window reveal surround, finished to match window frame.

6
Aluminium / timber composite framed window, fixed. Anodised finish.
Colour: Analok 543 by United Anodisers, or similar approved

7
Steel framed glazed curtain wall and door system to Common Room and Main Entrance.
Finish: PPC, RAL to match anodised finish (see 2)

8
PPC steel door for emergency access and escape only.
Finish: PPC, RAL to match anodised finish (see 2)

9
PPC steel louvered door.
Finish: PPC, RAL to match anodised finish (see 2)

10
Aluminium / timber composite entrance door, with glazed top hung opening fanlight above.
Finish: Painted RAL 030-70-20

11
Aluminium / timber composite framed window with aluminium louvered vent panel.
Anodised finish.
Colour: Analok 543 by United Anodisers, or similar approved

12
PPC steel 'Elefant Grating' brise soleil.
RAL to match anodised finish (see 2)

13
Air brick.
To match brick finish.

14
Signage. Pressed metal letters, anodised finish.
Colour: Analok 543 by United Anodisers, or similar approved

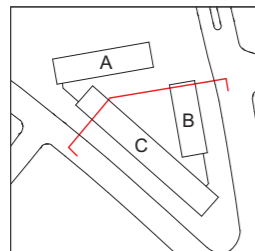
15
Steel walkway structure.
Finish: PPC, RAL 9010

16
Steel railing.
Finish: PPC, RAL 9010

17
Wall Luminaire adjacent to entrance doors.
Nyx Wall 190 from Focus by DW Windsor, or similar approved.
Finish: Corten Brown

18
Fully glazed door to communal stair
Finish: PPC, RAL to match anodised finish (see 2)

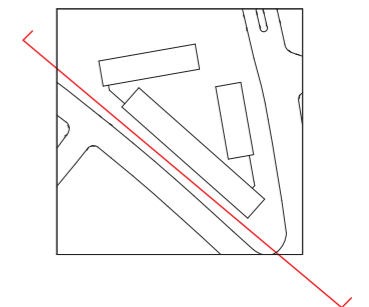
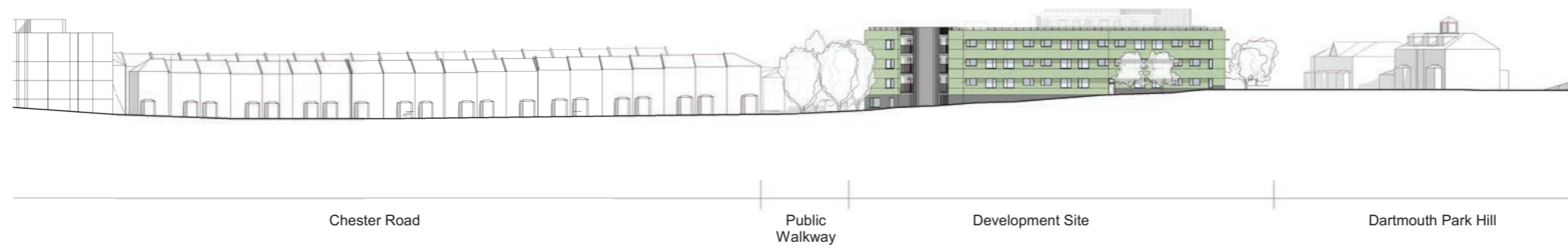
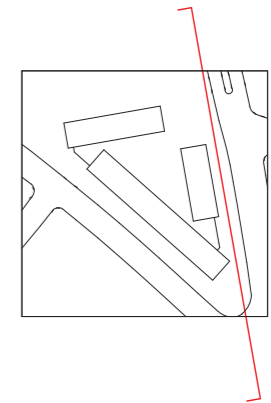
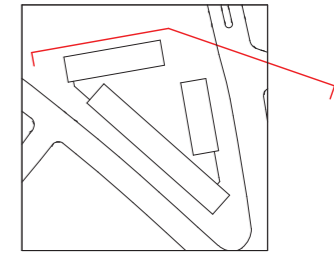
5.6.6 Proposed Section



5 Proposal

5.6 Elevational Study

5.6.7 Street elevations

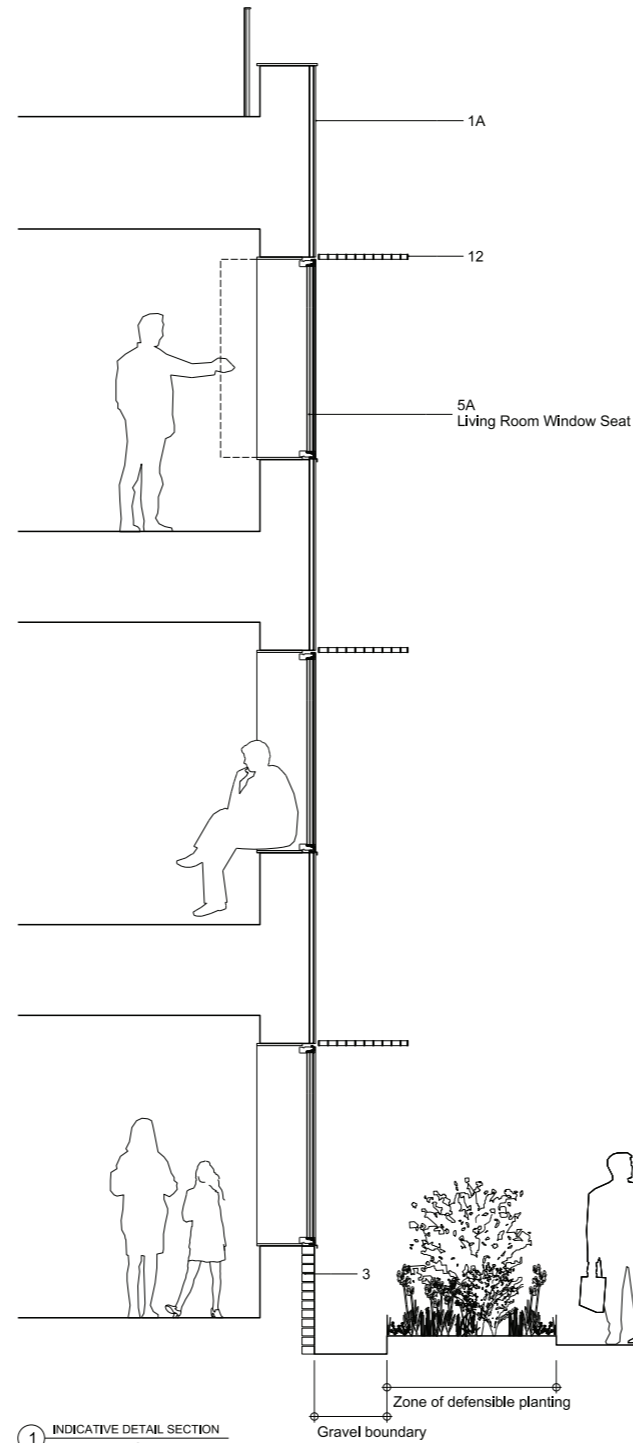


5.6.8 External Facade Bay Study

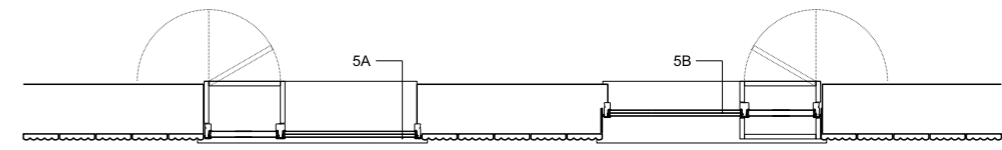
Material Key

- 1A
Terracotta tile, single glaze.
Profile type A.
Colour: RAL 130-50-30 or similar approved
- 1B
Terracotta tile, single glaze.
Profile type B.
Colour: RAL 130-50-30 or similar approved
- 2A
Perforated aluminium cladding and steel structure. Anodised finish.
Colour: Analok 543 by United Anodisers, or similar approved
- 2B
Solid aluminium cladding and steel structure. Anodised finish.
Colour: Analok 543 by United Anodisers, or similar approved
- 3
Facing brick.
Stack bonded with dark grey mortar to match.
Staffordshire Smooth Blue, or similar approved.
- 4
Rendered finish.
Roughness level 3.
Colour: 36436 Sto Colour System, or similar approved
- 5
Aluminium / timber composite framed window with aluminium louvered vent panel. Anodised finish.
Colour: Analok 543 by United Anodisers, or similar approved
- 5A
Type A: Fixed window, flush with the facade.
- 5B
Type B: Fixed window, recessed with aluminium reveal surround, finished to match window frame.
- 5C
Type C: Inward opening window, recessed with aluminium window reveal surround, finished to match window frame.
- 6
Aluminium / timber composite framed window, fixed. Anodised finish.
Colour: Analok 543 by United Anodisers, or similar approved

- 7
Steel framed glazed curtain wall and door system to Common Room and Main Entrance.
Finish: PPC, RAL to match anodised finish (see 2)
- 8
PPC steel door for emergency access and escape only.
Finish: PPC, RAL to match anodised finish (see 2)
- 9
PPC steel louvered door.
Finish: PPC, RAL to match anodised finish (see 2)
- 10
Aluminium / timber composite entrance door, with glazed top hung opening fanlight above.
Finish: Painted RAL 030-70-20
- 11
Aluminium / timber composite framed window with aluminium louvered vent panel. Anodised finish.
Colour: Analok 543 by United Anodisers, or similar approved
- 12
PPC steel 'Elefant Grating' brise soleil.
RAL to match anodised finish (see 2)
- 13
Air brick.
To match brick finish.
- 14
Signage. Pressed metal letters, anodised finish.
Colour: Analok 543 by United Anodisers, or similar approved
- 15
Steel walkway structure.
Finish: PPC, RAL 9010
- 16
Steel railing.
Finish: PPC, RAL 9010
- 17
Wall Luminaire adjacent to entrance doors.
Nyx Wall 190 from Focus by DW Windsor, or similar approved.
Finish: Corten Brown
- 18
Fully glazed door to communal stair
Finish: PPC, RAL to match anodised finish (see 2)



① INDICATIVE DETAIL SECTION
EXTERNAL FACADE



② INDICATIVE WINDOW DETAIL
EXTERNAL FACADE



② INDICATIVE MATERIAL STUDY IN ELEVATION
EXTERNAL FACADE

5 Proposal

5.6 Elevational Study

5.6.9 External Facade Stair Bay Study

Material Key

1A

Terracotta tile, single glaze.
Profile type A.
Colour: RAL 130-50-30 or similar approved

1B

Terracotta tile, single glaze.
Profile type B.
Colour: RAL 130-50-30 or similar approved

2A

Perforated aluminium cladding and steel structure. Anodised finish.
Colour: Analok 543 by United Anodisers, or similar approved

2B

Solid aluminium cladding and steel structure. Anodised finish.
Colour: Analok 543 by United Anodisers, or similar approved

3

Facing brick.
Stack bonded with dark grey mortar to match.
Staffordshire Smooth Blue, or similar approved.

4

Rendered finish.
Roughness level 3.
Colour: 36436 Sto Colour System, or similar approved

5

Aluminium / timber composite framed window with aluminium louvered vent panel. Anodised finish.
Colour: Analok 543 by United Anodisers, or similar approved

5A

Type A: Fixed window, flush with the facade.

5B

Type B: Fixed window, recessed with aluminium reveal surround, finished to match window frame.

5C

Type C: Inward opening window, recessed with aluminium window reveal surround, finished to match window frame.

6

Aluminium / timber composite framed window, fixed. Anodised finish.
Colour: Analok 543 by United Anodisers, or similar approved

7

Steel framed glazed curtain wall and door system to Common Room and Main Entrance.
Finish: PPC, RAL to match anodised finish (see 2)

8

PPC steel door for emergency access and escape only.
Finish: PPC, RAL to match anodised finish (see 2)

9

PPC steel louvered door.
Finish: PPC, RAL to match anodised finish (see 2)

10

Aluminium / timber composite entrance door, with glazed top hung opening fanlight above.
Finish: Painted RAL 030-70-20

11

Aluminium / timber composite framed window with aluminium louvered vent panel. Anodised finish.
Colour: Analok 543 by United Anodisers, or similar approved

12

PPC steel 'Elefant Grating' brise soleil.
RAL to match anodised finish (see 2)

13

Air brick.
To match brick finish.

14

Signage. Pressed metal letters, anodised finish.
Colour: Analok 543 by United Anodisers, or similar approved

15

Steel walkway structure.
Finish: PPC, RAL 9010

16

Steel railing.
Finish: PPC, RAL 9010

17

Wall Luminaire adjacent to entrance doors.
Nyx Wall 190 from Focus by DW Windsor, or similar approved.
Finish: Corten Brown

18

Fully glazed door to communal stair
Finish: PPC, RAL to match anodised finish (see 2)



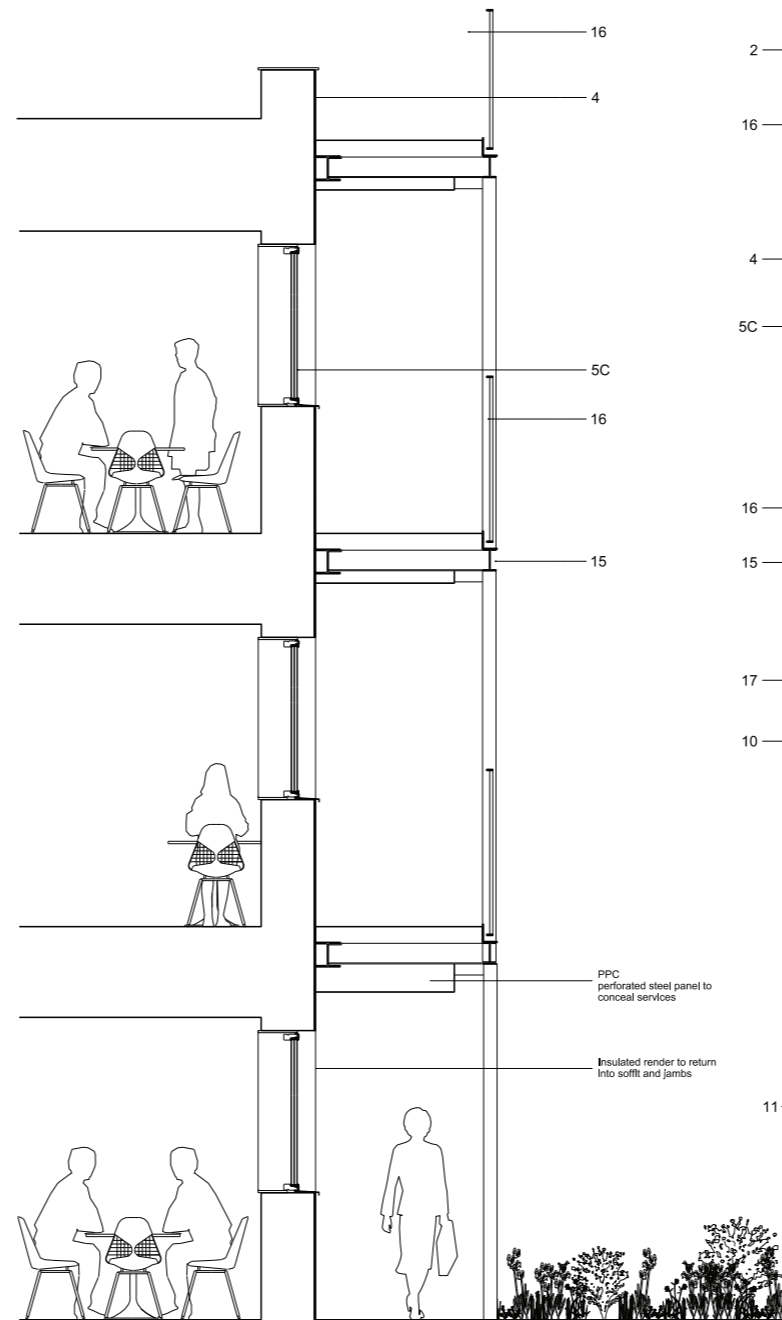
1 ILLUSTRATIVE MATERIAL STUDY IN ELEVATION
EXTERNAL CORE FACADE

5.6.10 Internal Facade Bay Study

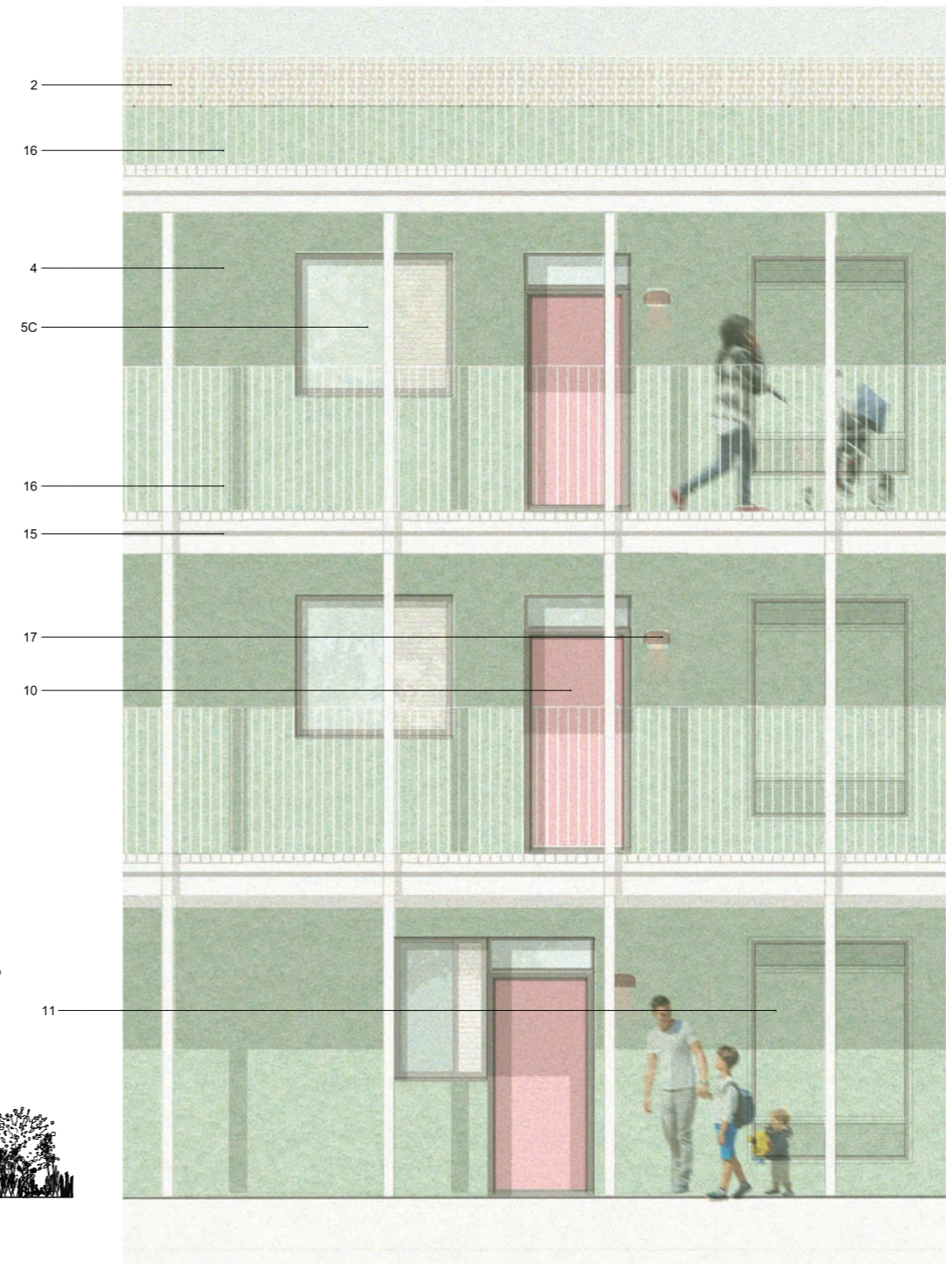
Material Key

- 1A Terracotta tile, single glaze. Profile type A. Colour: RAL 130-50-30 or similar approved
- 1B Terracotta tile, single glaze. Profile type B. Colour: RAL 130-50-30 or similar approved
- 2A Perforated aluminium cladding and steel structure. Anodised finish. Colour: Analok 543 by United Anodisers, or similar approved
- 2B Solid aluminium cladding and steel structure. Anodised finish. Colour: Analok 543 by United Anodisers, or similar approved
- 3 Facing brick. Stack bonded with dark grey mortar to match. Staffordshire Smooth Blue, or similar approved.
- 4 Rendered finish. Roughness level 3. Colour: 36436 Sto Colour System, or similar approved
- 5 Aluminium / timber composite framed window with aluminium louvered vent panel. Anodised finish. Colour: Analok 543 by United Anodisers, or similar approved
- 5A Type A: Fixed window, flush with the facade.
- 5B Type B: Fixed window, recessed with aluminium reveal surround, finished to match window frame.
- 5C Type C: Inward opening window, recessed with aluminium window reveal surround, finished to match window frame.
- 6 Aluminium / timber composite framed window, fixed. Anodised finish. Colour: Analok 543 by United Anodisers, or similar approved

- 7 Steel framed glazed curtain wall and door system to Common Room and Main Entrance. Finish: PPC, RAL to match anodised finish (see 2)
- 8 PPC steel door for emergency access and escape only. Finish: PPC, RAL to match anodised finish (see 2)
- 9 PPC steel louvered door. Finish: PPC, RAL to match anodised finish (see 2)
- 10 Aluminium / timber composite entrance door, with glazed top hung opening fanlight above. Finish: Painted RAL 030-70-20
- 11 Aluminium / timber composite framed window with aluminium louvered vent panel. Anodised finish. Colour: Analok 543 by United Anodisers, or similar approved
- 12 PPC steel 'Elefant Grating' brise soleil. RAL to match anodised finish (see 2)
- 13 Air brick. To match brick finish.
- 14 Signage. Pressed metal letters, anodised finish. Colour: Analok 543 by United Anodisers, or similar approved
- 15 Steel walkway structure. Finish: PPC, RAL 9010
- 16 Steel railing. Finish: PPC, RAL 9010
- 17 Wall Luminaire adjacent to entrance doors. Nyx Wall 190 from Focus by DW Windsor, or similar approved. Finish: Corten Brown
- 18 Fully glazed door to communal stair. Finish: PPC, RAL to match anodised finish (see 2)



① INDICATIVE DETAIL SECTION
INTERNAL FACADE



② ILLUSTRATIVE MATERIAL STUDY IN ELEVATION
INTERNAL FACADE