

HAZARD IDENTIFICATION SCHEDULE	
HAZARD IDENTIFICATION	CONTROL AND MITIGATION MEASURES
Restricted access to plant space for condensing unit strip out and installation of new units and new wall louvre. Existing live services in and around plant space belonging to third parties.	Detailed survey of existing space, services and access options. Identify owners/agents of existing service. Determine bespoke RAMS for strip out and installation works.
Hazards listed above are only those considered significant risks and: <ul style="list-style-type: none"> not likely to be obvious to a competent contractor or other designers unusual likely to be difficult to manage effectively 	
The above should be read in conjunction with all other project documentation and drawings.	

GRILLES AND DIFFUSERS									
UNIT REF.	TYPE	NOM. SIZE			OVERALL SIZE		PLENUM		NOTES
		DUTY (l/s)	L (mm)	W (mm)	L (mm)	W (mm)	No.	CONN.	
SD01	Circular Multi-Cone Diffuser	175	250ø	-	537ø	-	-	250ø	(1)
SD02	Circular Multi-Cone Diffuser	175	250ø	-	537ø	-	-	250ø	(1)
SD03	Circular Multi-Cone Diffuser	71	150ø	-	321ø	-	-	150ø	(2)
SD04	Circular Multi-Cone Diffuser	71	150ø	-	321ø	-	-	150ø	(2)
SD05	Circular Multi-Cone Diffuser	30	150ø	-	321ø	-	-	150ø	
SD06	Circular Multi-Cone Diffuser	30	150ø	-	321ø	-	-	150ø	
EG01	Circular Multi-Cone Diffuser	69	150ø	-	321ø	-	-	150ø	
EG02	Circular Multi-Cone Diffuser	69	150ø	-	321ø	-	-	150ø	
EG03	Circular Extract Valve	5	100ø	-	137ø	-	-	100ø	
EG04	Circular Extract Valve	6	100ø	-	137ø	-	-	100ø	
EG05	Eggcrate Wall Grille	6	-	-	-	-	-	-	(3)

NOTES:

- Adjustable. Set to horizontal diffusion. On FCU secondary supply - see Air Conditioning layout drawing M-001.
- Adjustable. Set to vertical diffusion. On FCU secondary supply - see Air Conditioning layout drawing M-001.
- Existing grille re-used.

VENTILATION PLANT SCHEDULE									
UNIT REF.	SYSTEM	DUTY		DIMENSIONS			WEIGHT (kg)	NOISE (dB(A))	NOTES
		SUPPLY (l/s)	EXTRACT (l/s)	LENGTH (mm)	WIDTH (mm)	HEIGHT (mm)			
MVHR01	General Ventilation	138	138	888	1016	331	33	34	(1)
EF01	Toilet Extract	-	29	230	334	334	-	16	(2)

NOTES:

- Controlled to Occupancy Time Schedule by AC system central controller.
- Existing re-used fan, controlled to Occupancy Time Schedule. PIR control not used due to number of rooms served.

VENTILATION SIZING			
SPACE	CRITERION	PARAMETER	RATE, l/s
Banking Hall	2 l/s/m ²	7.0 m ²	14
Pod Consultation Room	8 l/s/pers	3 People	24
Back Office	10 l/s/pers	3 People	30
Staff Room	10 l/s/pers	3 People	30
Cleaner's Cupboard	4 ac/hr	1.4m ²	5
Unisex WC01	6 l/s/pan	1 Pan	6
Unisex WC03	6 l/s/pan	1 Pan	6

Above volumes are minimums to comply with design criteria. Actual volumes may be higher due to selection of closest available equipment.
Banking Hall: 6m radius natural ventilation zone allowed at main entrance.
Staff Room based on occupancy, not air change rate, as ventilation-only cooling is not an option in this branch.

STRIP OUT WORKS (GENERALLY):

- DECOMMISSION AND STRIP OUT EXISTING AC SYSTEMS INCLUDING ROOM UNITS, EXTERNAL CONDENSING UNITS, CONTROLS, CABLING, PIPEWORK, INSULATION AND SUPPORTS, ETC.
- DECOMMISSION AND STRIP OUT EXISTING OVER DOOR AIR CURTAIN, INCLUDING CONTROLS, CABLING AND POWER SUPPLY.
- DECOMMISSION AND REMOVE EXISTING EXTRACT AND TRANSFER VENT SYSTEMS, INCLUDING ASSOCIATED DUCTWORK, GRILLES, LOUVRES, CONTROLS, AND SUPPORTS ETC. RETAIN EXISTING EXHAUST PLENUM AND LOUVRE AND EXISTING TOILET EXTRACT SYSTEM, EXCEPT EXTRACT GRILLES IN WC01 AND WC02.
- DECOMMISSION, ISOLATE AND STRIP BACK EXISTING WATER AND DRAINAGE CONNECTIONS FROM TOILET WITHIN WC02. RETAIN INCOMING SERVICES FOR RE-USE AT NEW CLEANER'S SINK. DECOMMISSION, ISOLATE AND STRIP BACK EXISTING WATER AND DRAINAGE CONNECTIONS FROM WHB WITHIN WC02. STRIP BACK TO EXISTING PRIMARY SERVICES AS FAR AS PRACTICABLE AND CAP OFF.
- DECOMMISSION, ISOLATE AND STRIP OUT EXISTING HOT WATER CYLINDER, COLD WATER FEED, HOT WATER SUPPLY AND HOT WATER RETURN SYSTEM. INCLUDE ALL PIPEWORK, FITTINGS, SUPPORTS, PUMP, CONTROLS AND POWER SUPPLIES. CUT COLD FEED BACK TO LOCAL RETAINED MCWS SYSTEM AND CAP ODD WITH MINIMAL DEAD-LEG. REMOVE EXISTING HWS IN WC01 AND WC02.
- RETAIN ALL EXISTING WATER AND WASTE SERVICES IN WC01, WC03 AND KITCHENETTE, EXCEPT HWS IN WC01, REFERRED TO ABOVE.
- DECOMMISSION AND STRIP OUT EXISTING SPRINKLER SYSTEM. NEW SPRINKLER SYSTEM TO BE INSTALLED TO SUIT NEW BRANCH LAYOUT.
- STRIP OUT QUANTITIES:
 - REMOVE THREE (3) AC SPLIT SYSTEMS.
 - REMOVE ONE (1) OVERDOOR AIR CURTAIN.
 - REMOVE TWO (2) HOT WATER CYLINDER.
 - REMOVE TWO (2) INLINE FANS.
 - REMOVE 22m OF SMALL DUCTWORK.

HAZZARDS AND RISKS:

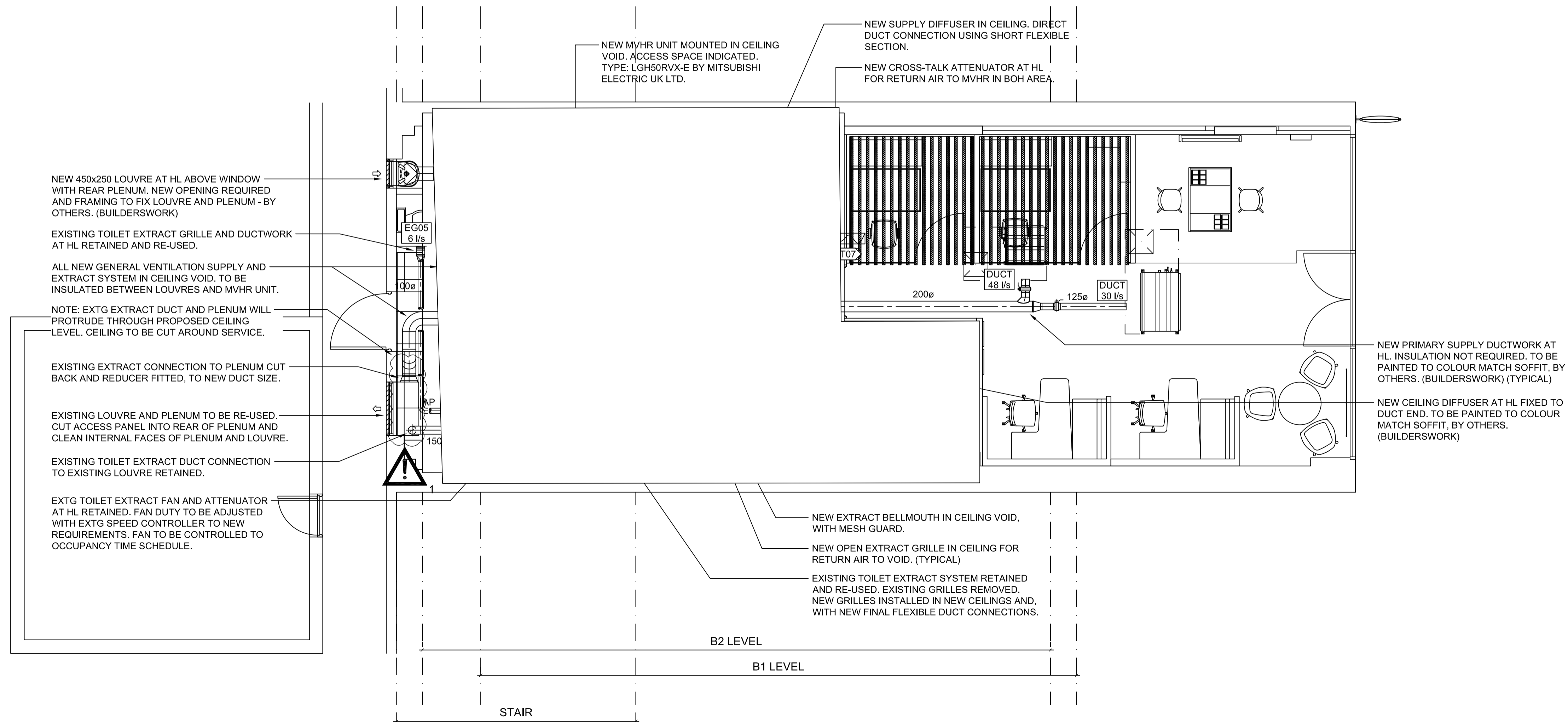
1. MODIFICATION TO PROPOSED CEILING REQUIRED, TO ACCOMMODATE EXISTING PLENUM AND DUCT BEING RETAINED. ITEMS EXTEND BELOW CURRENT PROPOSED CEILING LEVEL.
2. RESTRICTED SPACE FOR INSTALLATION OF EXTERNAL CONDENSING UNITS AND PRESENCE OF EXISTING SERVICES BELONGING TO OTHER PARTIES. SERVICES ARE EXPECTED TO REMAIN LIVE THROUGHOUT THE WORKS.

NOTES

TO BE READ IN CONJUNCTION WITH ALL OTHER PROJECT DRAWINGS, REPORTS AND SPECIFICATIONS. REFER TO DRAWING ME-001 FOR SYMBOLS LEGEND

DO NOT SCALE FROM DRAWINGS. ALL DIMENSIONS TO BE CONFIRMED ON SITE.

ALL PLANT AND EQUIPMENT POSITIONS AND DISTRIBUTION SERVICE RUNS ARE INDICATIVE AND APPROXIMATE. EXACT POSITIONS TO BE DETERMINED ON SITE.



0	10/07/2020	MH	Contractor's Proposal Issue.	GC	RC
REV	DATE	BY		CHK	APP

STATUS For Approval

CLIENT

ISG
Boleyn House,
St Augustines
Business Park,
Whitstable,
Kent CT15 2JQ

PROJECT

93 EUSTON ROAD, KINGS CROSS
LONDON, NW1 2RA

TITLE

MECHANICAL SERVICES
GROUND FLOOR
VENTILATION
PROPOSED LAYOUT

Jupiter House
Orbital One
Green Street Green Road
Dartford, Kent
DA1 1QG
Tel: 01322 842200
Fax: 01322 842219

DRAWN	CHECKED	APPROVED
MH	GC	RC
SCALE	DATE	
1:50 @ A1	12/06/2020	
PROJECT No.	DRAWING No.	REV.
E8976	M-002	0

© AMD ENVIRONMENTAL LTD.