

HAZARD IDENTIFICATION SCHEDULE	
HAZARD IDENTIFICATION	CONTROL AND MITIGATION MEASURES
Restricted access to plant space for condensing unit strip out and installation of new units and new wall louvre. Existing live services in and around plant space belonging to third parties.	Detailed survey of existing space, services and access options. Identify owners/agents of existing service. Determine bespoke RAMS for strip out and installation works.
Hazards listed above are only those considered significant risks and: <ul style="list-style-type: none"><li>not likely to be obvious to a competent contractor or other designers</li><li>unusual</li><li>likely to be difficult to manage effectively</li></ul> The above should be read in conjunction with all other project documentation and drawings.	


AIR CONDITIONING EQUIPMENT - ROOM UNITS										
UNIT REF.	ROOM / SPACE SERVED	MODEL	TYPE	COOLING (kW, UK)	HEATING (kW, UK)	NOM. SIZE		WEIGHT (kg)	SPL dB(A)	CONDENSING UNIT REF.
				L (mm)	W (mm)	H (mm)				
AC01	BANKING HALL	PEFY-P80VMA-A	FAN COIL UNIT	8.04	8.37	732	1100	250	31	CU01
AC02	PODS	PEFY-P25VMA-A	FAN COIL UNIT	1.50	1.90	732	700	250	21	CU01
AC03	BACK OFFICE	SLZ-M35FA	CEILING CASSETTE	2.44	2.92	650	650	255	18	CU02
AC04	STAFF ROOM	SLZ-M35FA	CEILING CASSETTE	2.46	2.93	650	650	255	18	CU02
AC05	COMMS ROOM	MSZ-HR25VF	HI-WALL UNIT	2.60	2.38	838	228	280	9	CU03
AC06	DOOR CURTAIN	HP2000 DXE	AIR CURTAIN	n/a	15.70	2350	468	306	84	CU04


AIR CONDITIONING CONDENSING UNITS									
UNIT REF.	MODEL	SYSTEM	COOLING (kW, UK)	HEATING (kW, UK)	DIMENSIONS			WEIGHT (kg)	NOISE (dB(A))
					L (mm)	W (mm)	H (mm)		
CU01	PUMY-P112VKMR1	MINI VRF	12.90	11.04	1050	330	981	93	54
CU02	MXZ-3F68VF-E2	MULTI SPLIT	4.90	5.85	840	330	710	58	53
CU03	MUZ-HR25VF	SINGLE SPLIT	2.60	2.38	699	249	538	23	50
CU03	PUHZ-ZRP140VKA2	SINGLE SPLIT	-	15.70	1050	330	1338	118	52

STRIP OUT WORKS (GENERALLY):

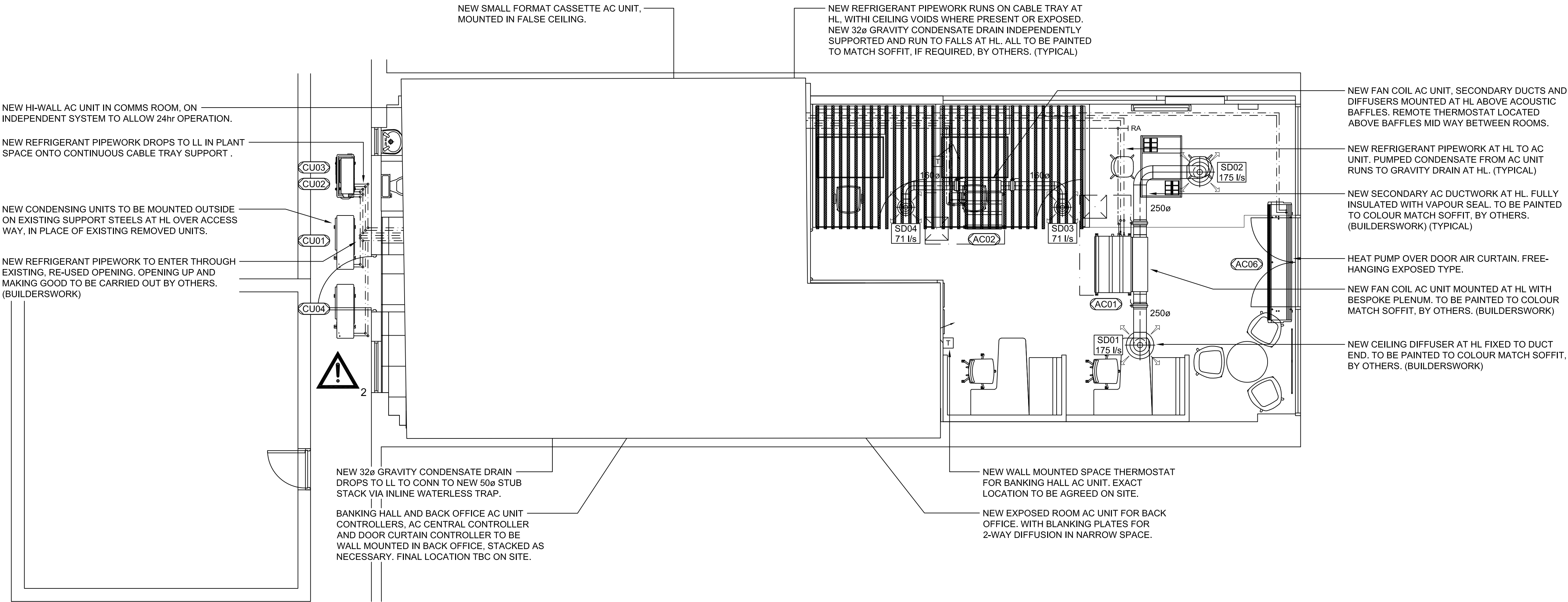
- DECOMMISSION AND STRIP OUT EXISTING AC SYSTEMS INCLUDING ROOM UNITS, EXTERNAL CONDENSING UNITS, CONTROLS, CABLING, PIPEWORK, INSULATION AND SUPPORTS, ETC.
- DECOMMISSION AND STRIP OUT EXISTING OVER DOOR AIR CURTAIN, INCLUDING CONTROLS, CABLING AND POWER SUPPLY.
- DECOMMISSION AND REMOVE EXISTING EXTRACT AND TRANSFER VENT SYSTEMS, INCLUDING ASSOCIATED DUCTWORK, GRILLES, LOUVRES, CONTROLS, AND SUPPORTS ETC. RETAIN EXISTING EXHAUST PLENUM AND LOUVRE AND EXISTING TOILET EXTRACT SYSTEM, EXCEPT EXTRACT GRILLES IN WC01 AND WC02.
- DECOMMISSION, ISOLATE AND STRIP BACK EXISTING WATER AND DRAINAGE CONNECTIONS FROM TOILET WITHIN WC02. RETAIN INCOMING SERVICES FOR RE-USE AT NEW CLEANER'S SINK. DECOMMISSION, ISOLATE AND STRIP BACK EXISTING WATER AND DRAINAGE CONNECTIONS FROM WHB WITHIN WC02. STRIP BACK TO EXISTING PRIMARY SERVICES AS FAR AS PRACTICABLE AND CAP OFF.
- DECOMMISSION, ISOLATE AND STRIP OUT EXISTING HOT WATER CYLINDER, COLD WATER FEED, HOT WATER SUPPLY AND HOT WATER RETURN SYSTEM. INCLUDE ALL PIPEWORK, FITTINGS, SUPPORTS, PUMP, CONTROLS AND POWER SUPPLIES. CUT COLD FEED BACK TO LOCAL RETAINED MCWS SYSTEM AND CAP ODD WITH MINIMAL DEAD-LEG. REMOVE EXISTING HWS IN WC01 AND WC02.
- RETAIN ALL EXISTING WATER AND WASTE SERVICES IN WC01, WC03 AND KITCHENETTE, EXCEPT HWS IN WC01, REFERRED TO ABOVE.
- DECOMMISSION AND STRIP OUT EXISTING SPRINKLER SYSTEM. NEW SPRINKLER SYSTEM TO BE INSTALLED TO SUIT NEW BRANCH LAYOUT.
- STRIP OUT QUANTITIES:
  - REMOVE THREE (3) AC SPLIT SYSTEMS.
  - REMOVE ONE (1) OVERDOOR AIR CURTAIN.
  - REMOVE TWO (1) HOT WATER CYLINDER.
  - REMOVE TWO (2) INLINE FANS.
  - REMOVE 22m OF SMALL DUCTWORK.

HAZZARDS AND RISKS:

- 

1 MODIFICATION TO PROPOSED CEILING REQUIRED, TO ACCOMMODATE EXISTING PLENUM AND DUCT BEING RETAINED. ITEMS EXTEND BELOW CURRENT PROPOSED CEILING LEVEL.
- 

2 RESTRICTED SPACE FOR INSTALLATION OF EXTERNAL CONDENSING UNITS AND PRESENCE OF EXISTING SERVICES BELONGING TO OTHER PARTIES. SERVICES ARE EXPECTED TO REMAIN LIVE THROUGHOUT THE WORKS.



NOTES

TO BE READ IN CONJUNCTION WITH ALL OTHER PROJECT DRAWINGS, REPORTS AND SPECIFICATIONS. REFER TO DRAWING ME-001 FOR SYMBOLS LEGEND

DO NOT SCALE FROM DRAWINGS. ALL DIMENSIONS TO BE CONFIRMED ON SITE.

ALL PLANT AND EQUIPMENT POSITIONS AND DISTRIBUTION SERVICE RUNS ARE INDICATIVE AND APPROXIMATE. EXACT POSITIONS TO BE DETERMINED ON SITE.


0	10/07/2020	MH	Contractor's Proposal Issue.	GC	RC
REV	DATE	BY		CHK	APD

STATUS	For Approval
--------	--------------

CLIENT	 <p>ISG Boleyn House, St Augustines Business Park, Whitstable, Kent CT5 2QJ</p>
--------	--

PROJECT	 <p>93 EUSTON ROAD, KINGS CROSS LONDON, NW1 2RA</p>
---------	--

TITLE	MECHANICAL SERVICES GROUND FLOOR AIR CONDITIONING PROPOSED LAYOUT
-------	--

 <p>Jupiter House Orbital One Green Street Green Road Dartford, Kent DA1 1QG Tel: 01322 842200 Fax: 01322 842219</p>
---

DRAWN	CHECKED	APPROVED
MH	GC	RC
SCALE	DATE	
1:50 @ A1	12/06/2020	
PROJECT No.	DRAWING No.	REV.
E8976	M-001	0
© AMD ENVIRONMENTAL LTD.		