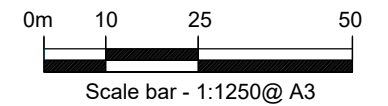


Notes:

1. Measurements on this drawing sheet are based on O.S data or consultant survey information/ documents provided to the Canal & River Trust. All measurements should be checked on site for accuracy.
 2. Overall Dimensions:
W1 ,550mm x H 3,590mm
Area: 5.56m²
- Installation Method: Adhered to wall using adhesive to be agreed with Agent
- Material: 3mm blue and white printed aluminium composite

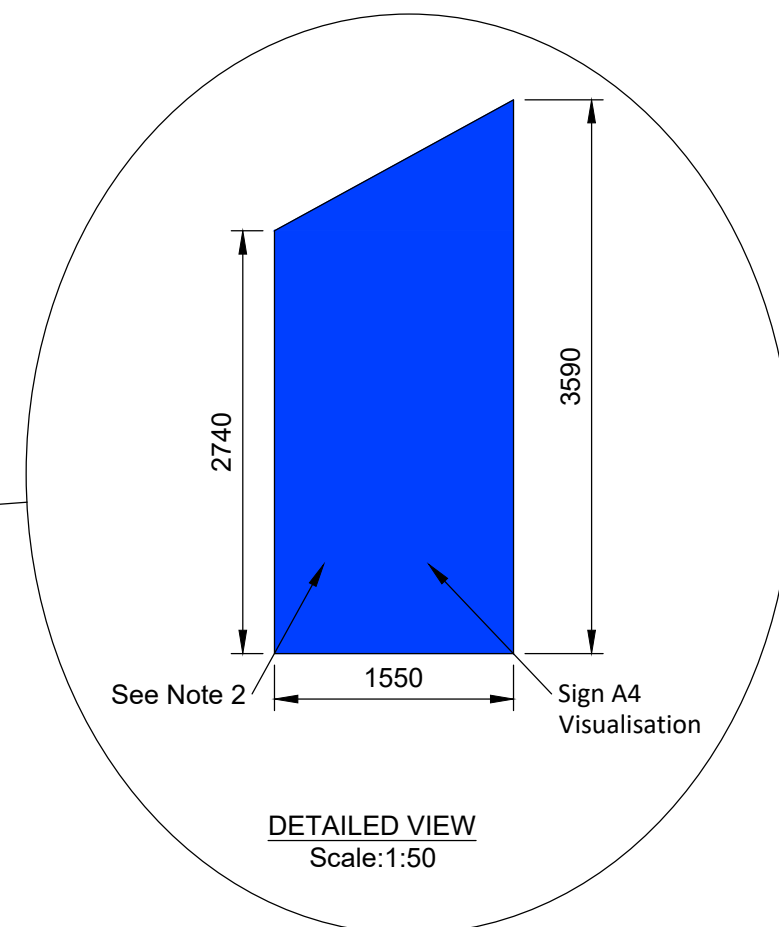
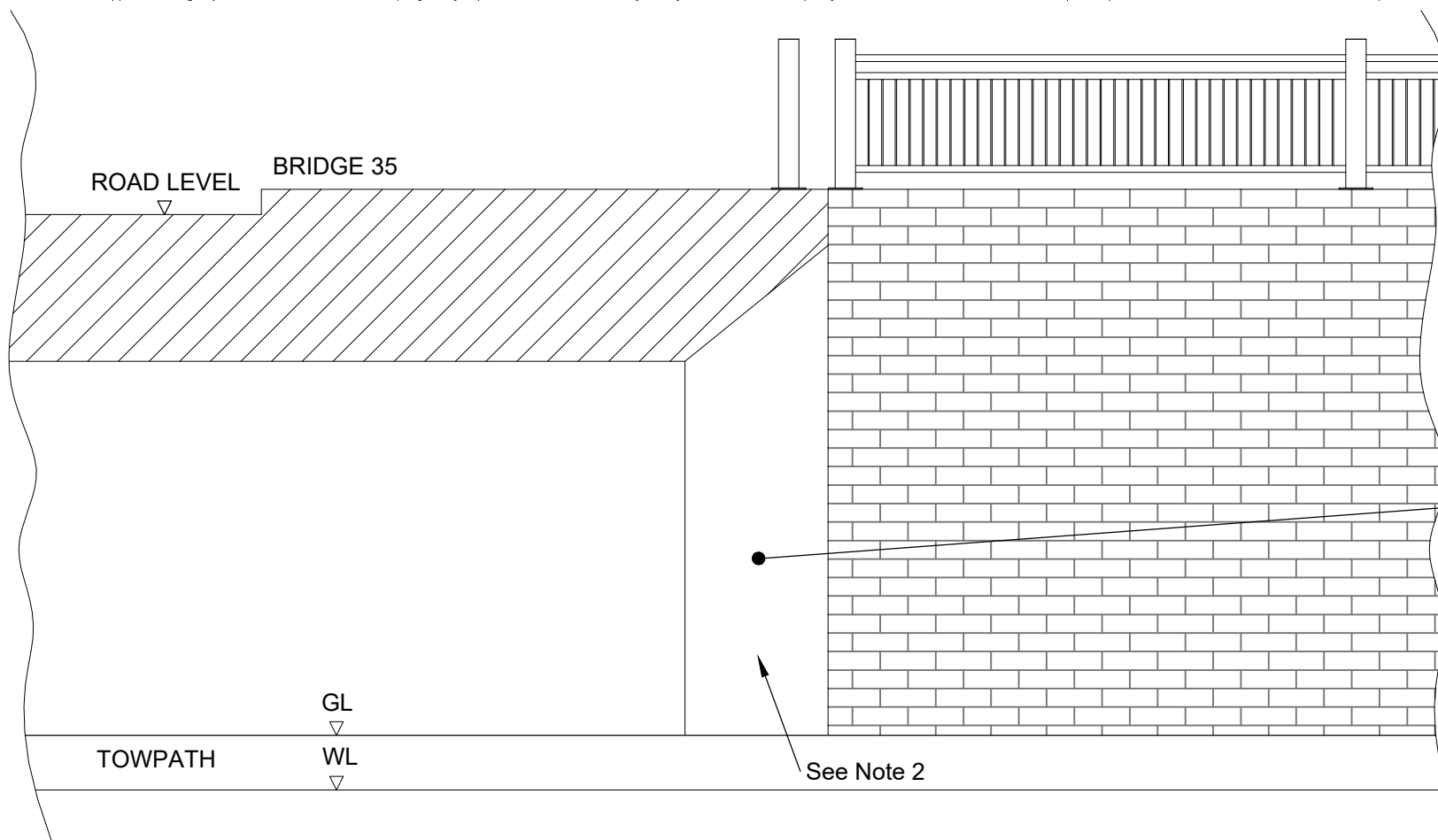
KEY

- = CRT Property Boundary Line
- = Application Boundary



C	30.03.2020	Minor amendments	AMB
B	23.03.2020	Minor amendments	DSR
A	23.01.19	Notes revised	AMB

Revisions:



Engineering Services

Project:
Project Compass Signage

Drawing Title:
**King's Cross
Granary Square Bridge Before & After
Sign A4**

CANAL & RIVER TRUST COPYRIGHT RESERVED

Drawn By: AMB	Checked By: AN
Authorised By:	Date: 26.03.19
Drawing Scale (A3) As Drawn	Rev. C

Drg. No.
CNSD20-KC-DWG-004-PL-01