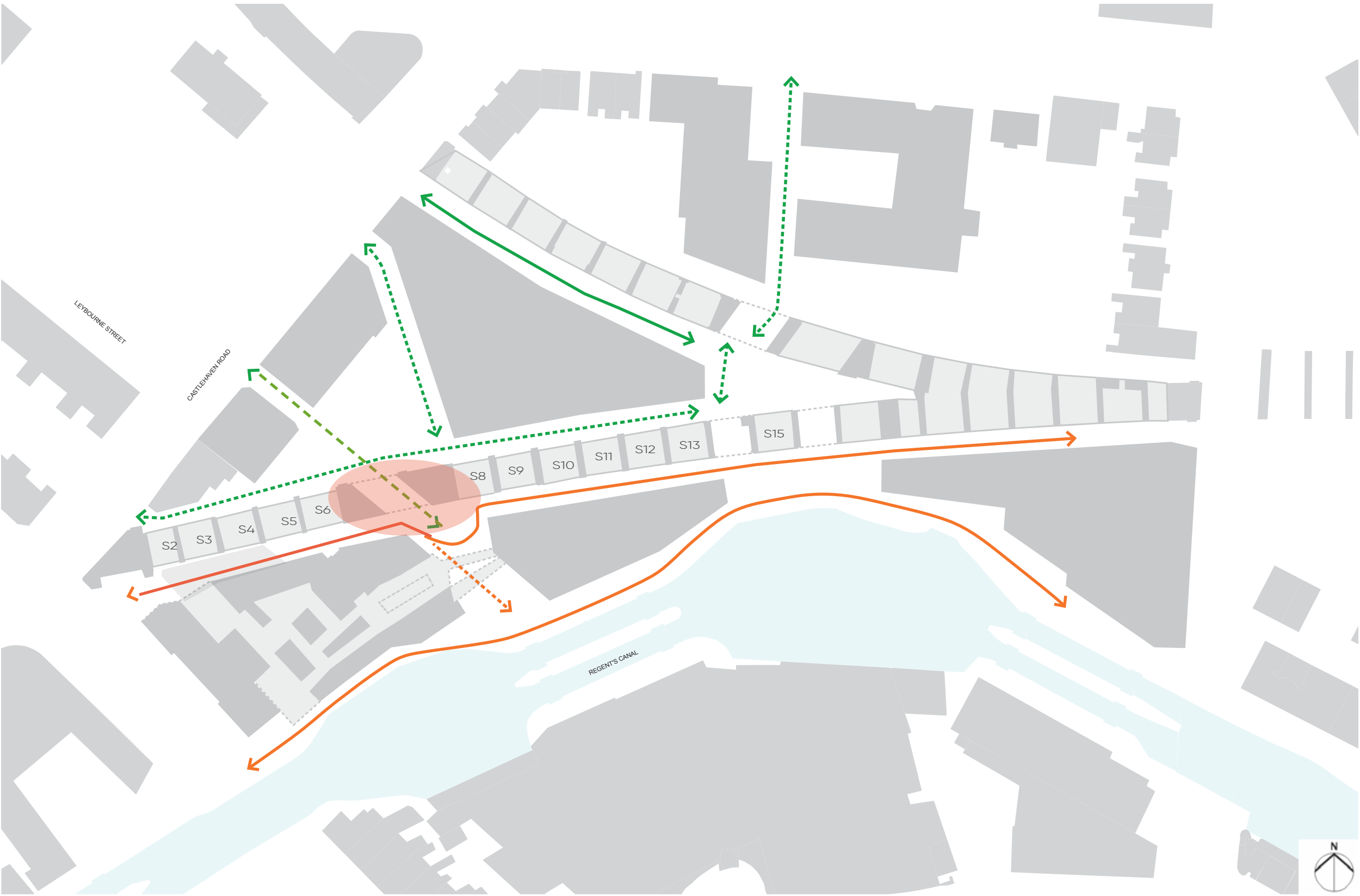


Hawley Wharf Camden

# Skewed Arch

## INTERACTIVE KINETIC INSTALLATION ART

July 2020



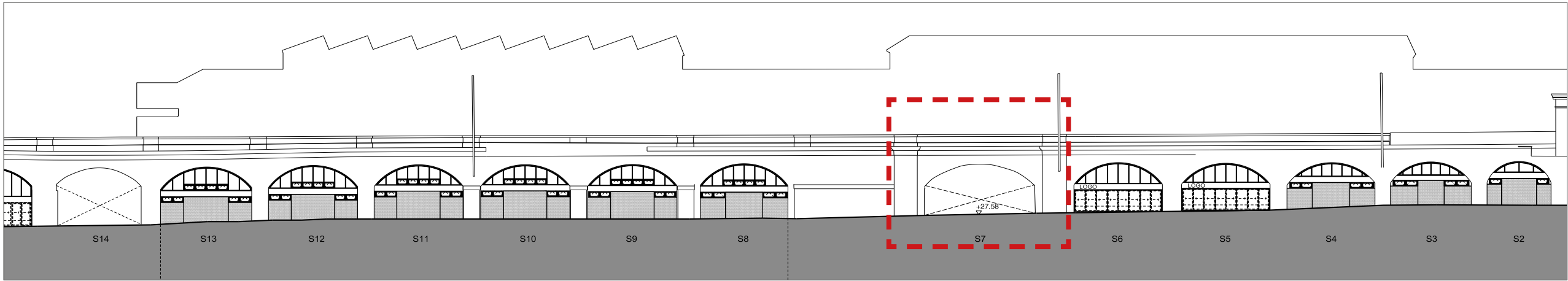
- Primary visitor - major
- Primary visitor - minor
- Local routes - major (residents and employment)
- Local routes - minor (residents and employment)



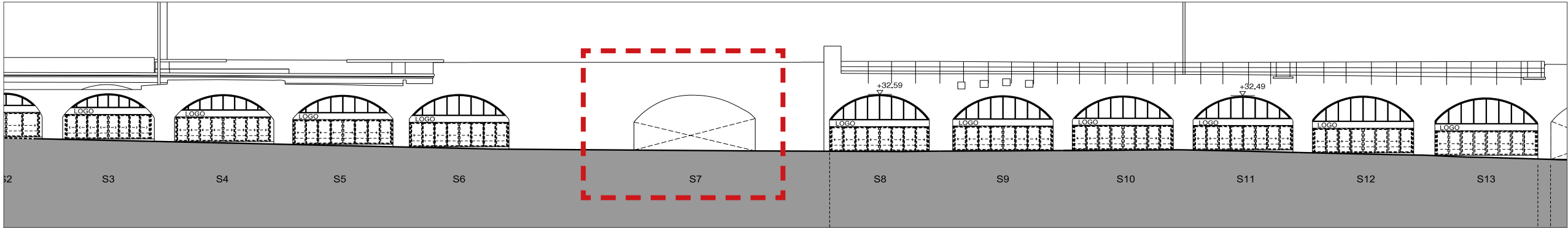
VIEW FROM LOCAL OPEN SPACE



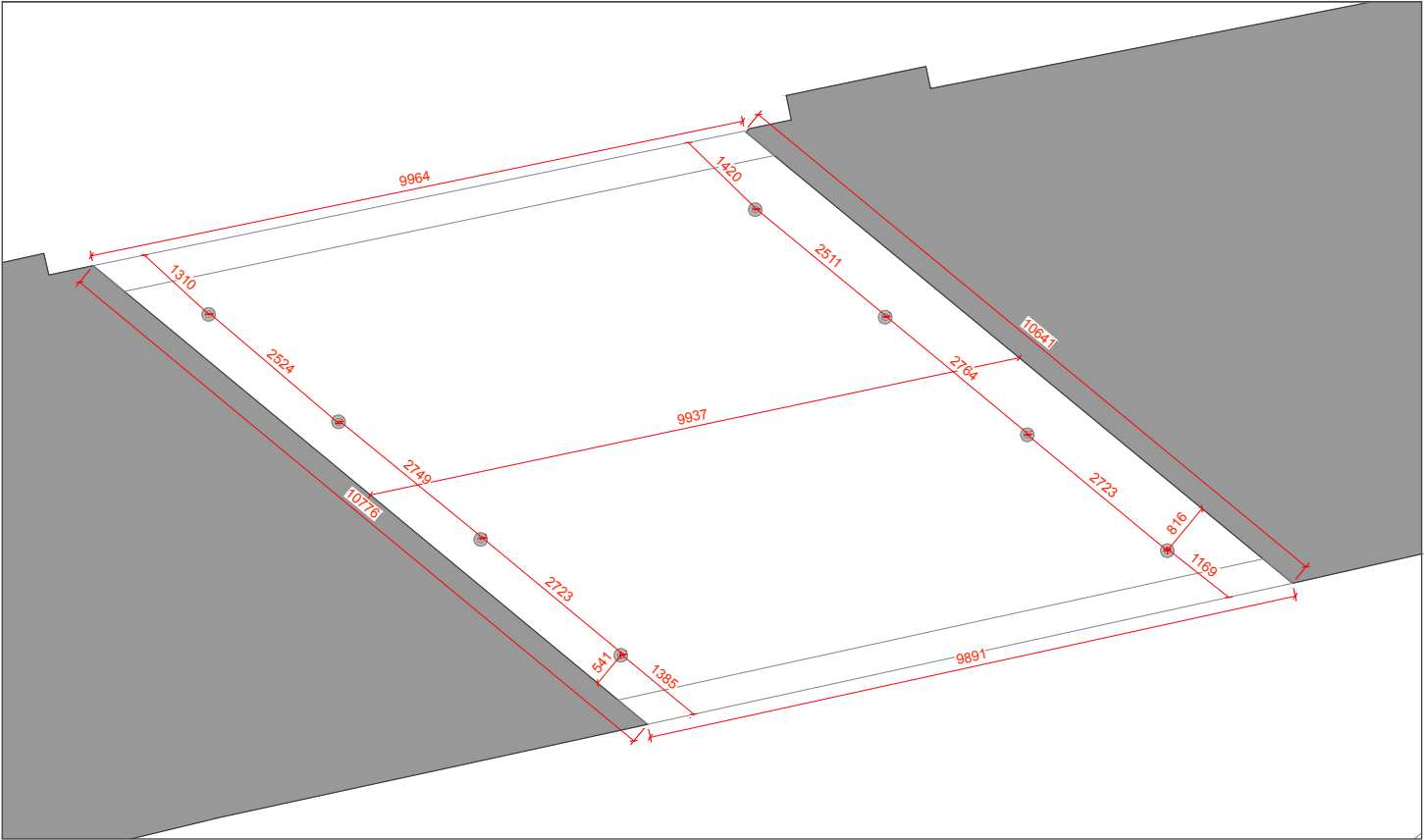
VIEW FROM MARKET SPACE



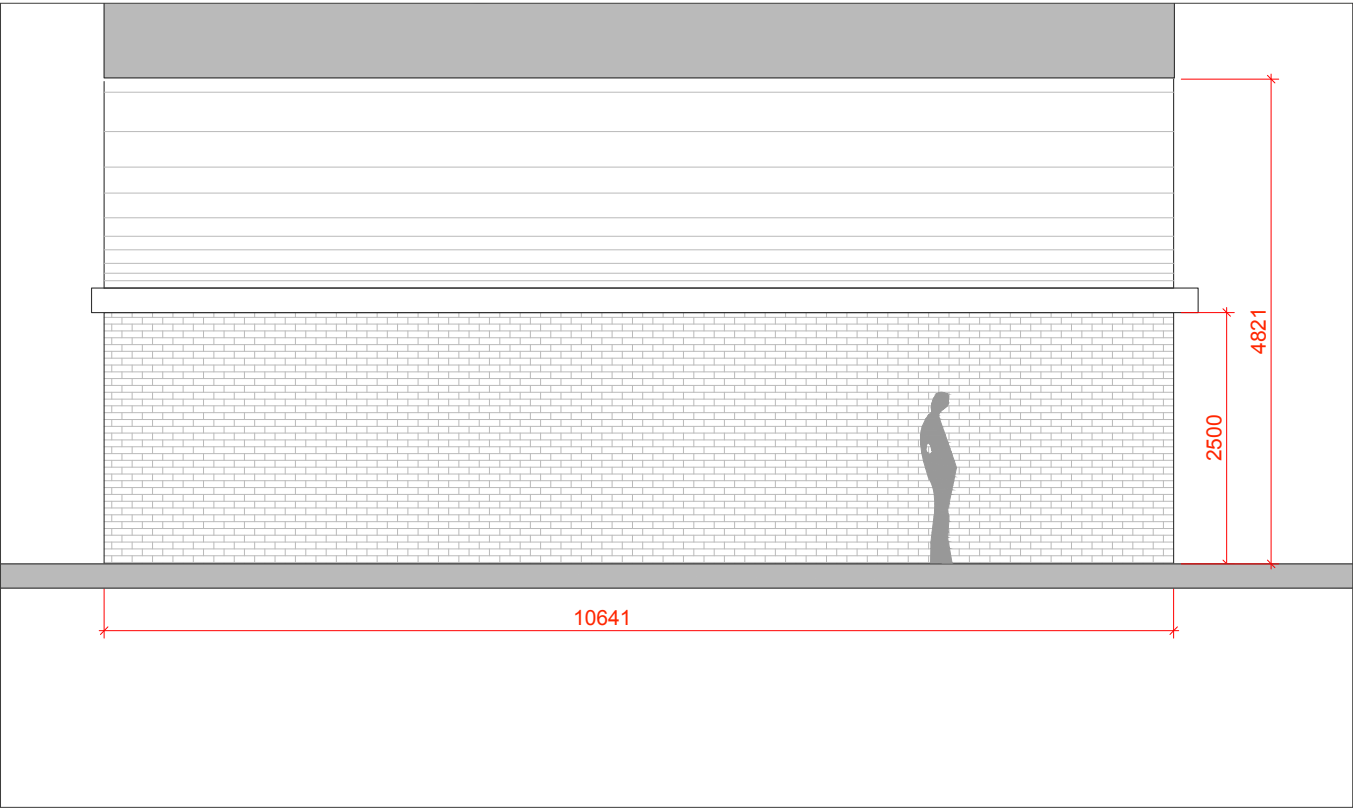
SOUTHERN ARCHES - NORTH ELEVATION



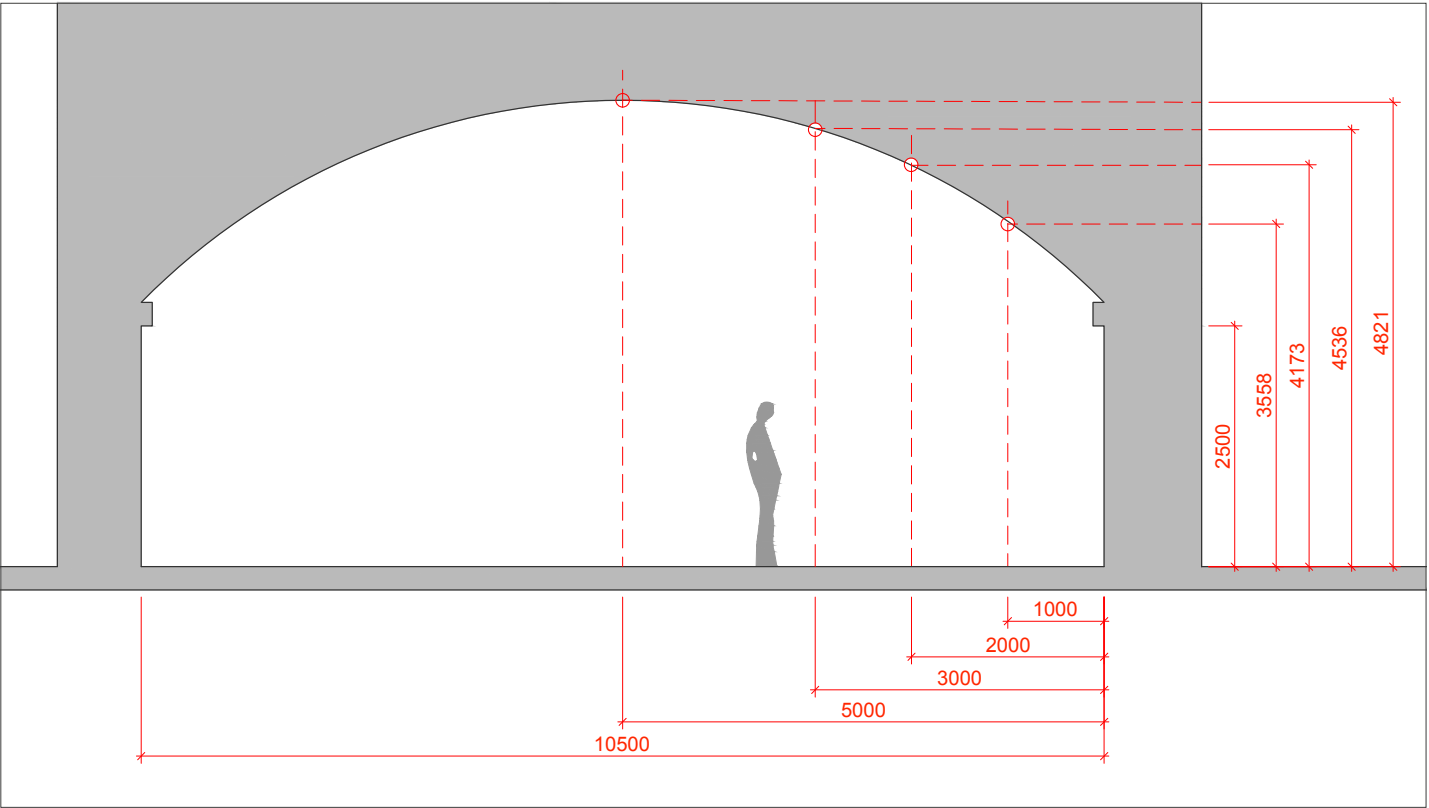
SOUTHERN ARCHES - SOUTH ELEVATION



PLAN - \*NOT IN SCALE DIMS IN MILLIMETRES



TYPICAL ELEVATION \*NOT IN SCALE DIMS IN MILLIMETRES



PLAN \*NOT IN SCALE DIMS IN MILLIMETRES

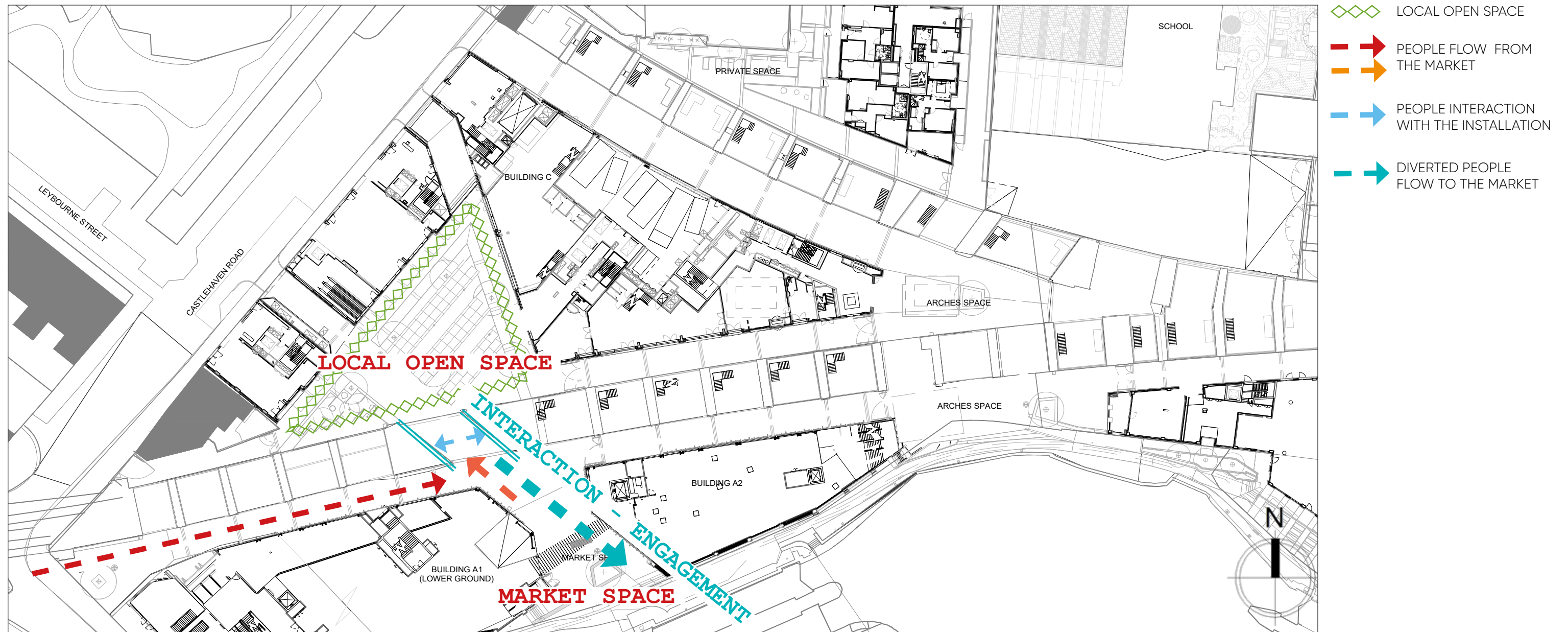




Pursuant to condition 29 of planning permission ref: 2018/1715/P dated 3 December 2018, prior to the commencement of the relevant part of the development, further details of the “skewed arch” limiting northward pedestrian movements the market open space into the local open space, whilst also preserving the heritage value of the arch and maintaining an appropriate permeability route through the arch shall be submitted to the Council for approval, following consultation with the local community and notwithstanding the proposals for the “skewed arch” shown on approved plan 12001\_C\_(00)\_100, the “skewed arch” shall be implemented in accordance with such details as may be approved by the Council and shall be completed once the coal chute has been demolished in Area A.”

Reason: To protect the amenity of the local open space in accordance with the requirements of policy CS5 and CS15 of the London Borough of Camden Local Development Framework Core Strategy and policy DP26 of the London Borough of Camden Local Development Framework Development Policies.

- LIMIT northward pedestrian movements from the market open space into the local open space
- PRESERVE the heritage value of the arch
- MAINTAIN an appropriate permeability route through the arch



GRAPHIC INTERPRETATION OF COUNCIL BRIEF

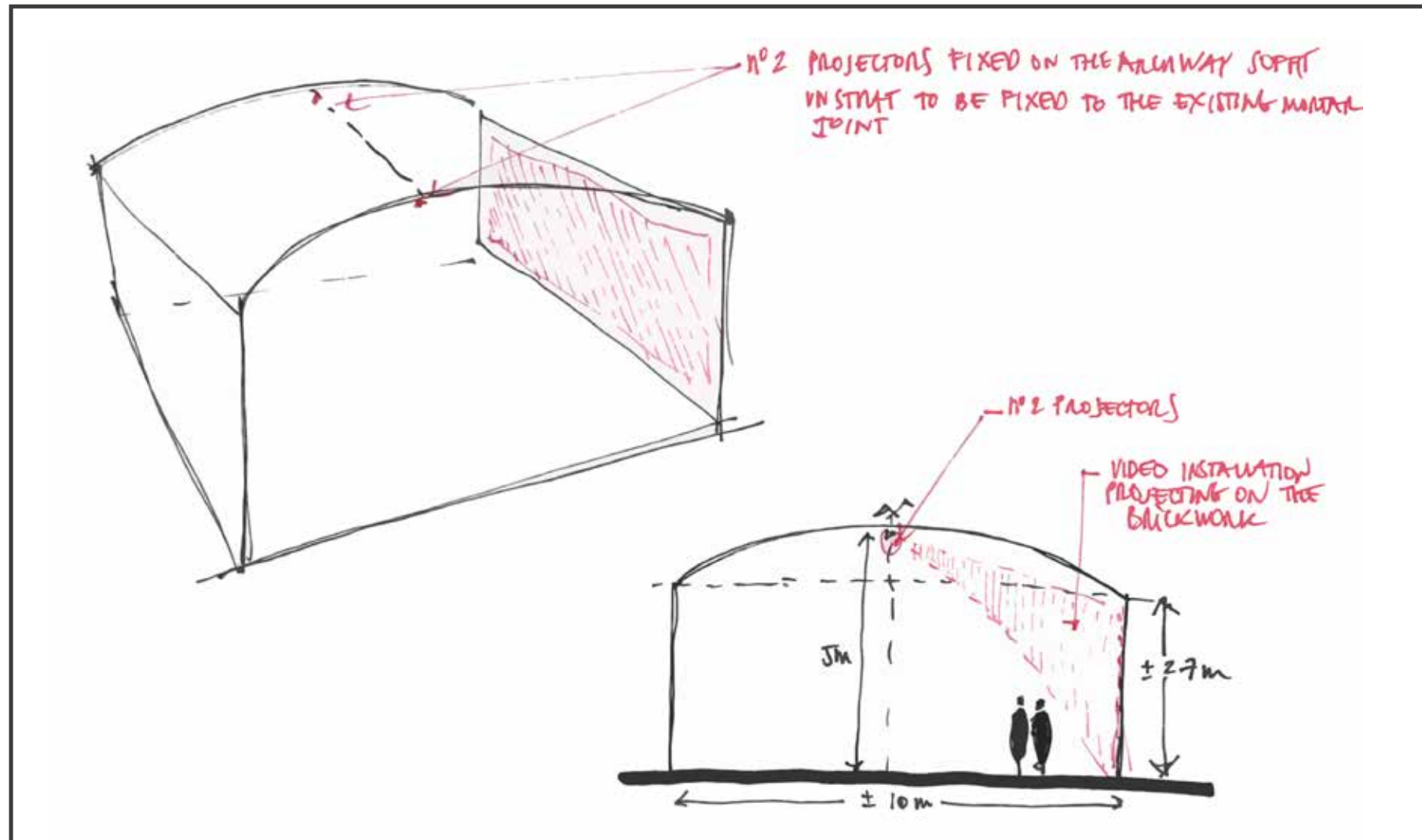


In reviewing the approved solution (ref: 2019/1574/P , dated 17 May 2019) in greater detail it became apparent that it could not be delivered.

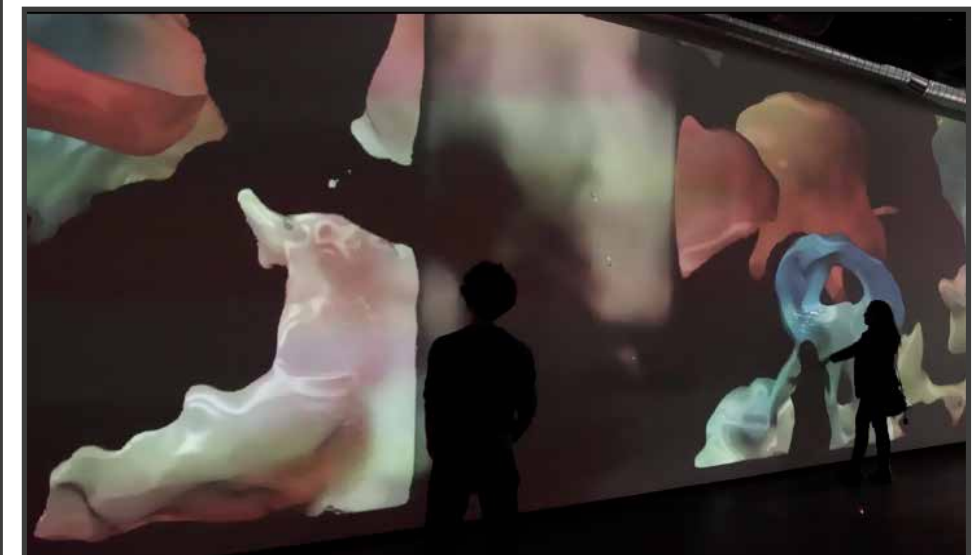
The projectors would need a bulky and heavy case to protect them from weather and vandalism, the projection would also necessitate a plain surface as on the bare brickwork wall wouldn't achieve the required quality.

We have then decided to look for a different approach, more practical and efficient and that would also leave the arch's ceiling exposed in its own beauty, whilst also achieving the council's aims of limiting northward pedestrian movements through the arch.

Following an initial design competition, Jason Bruges Studio proposal of a series of interactive canvas seemed the most suitable.

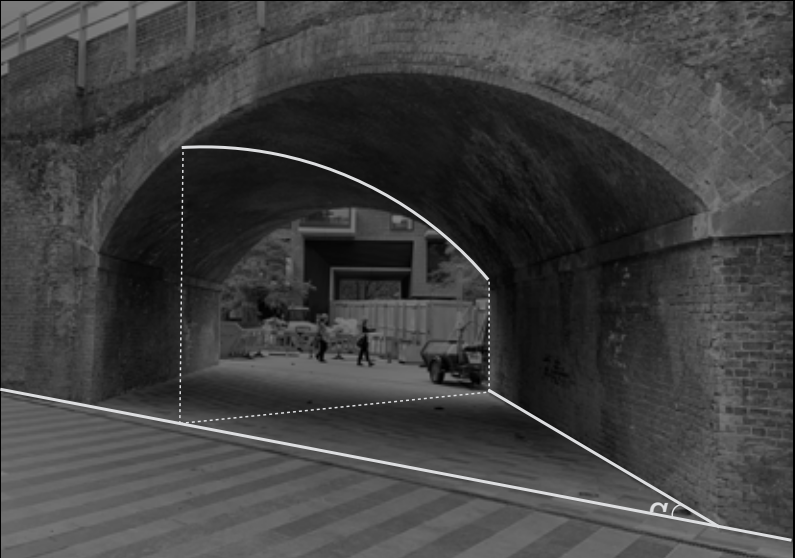
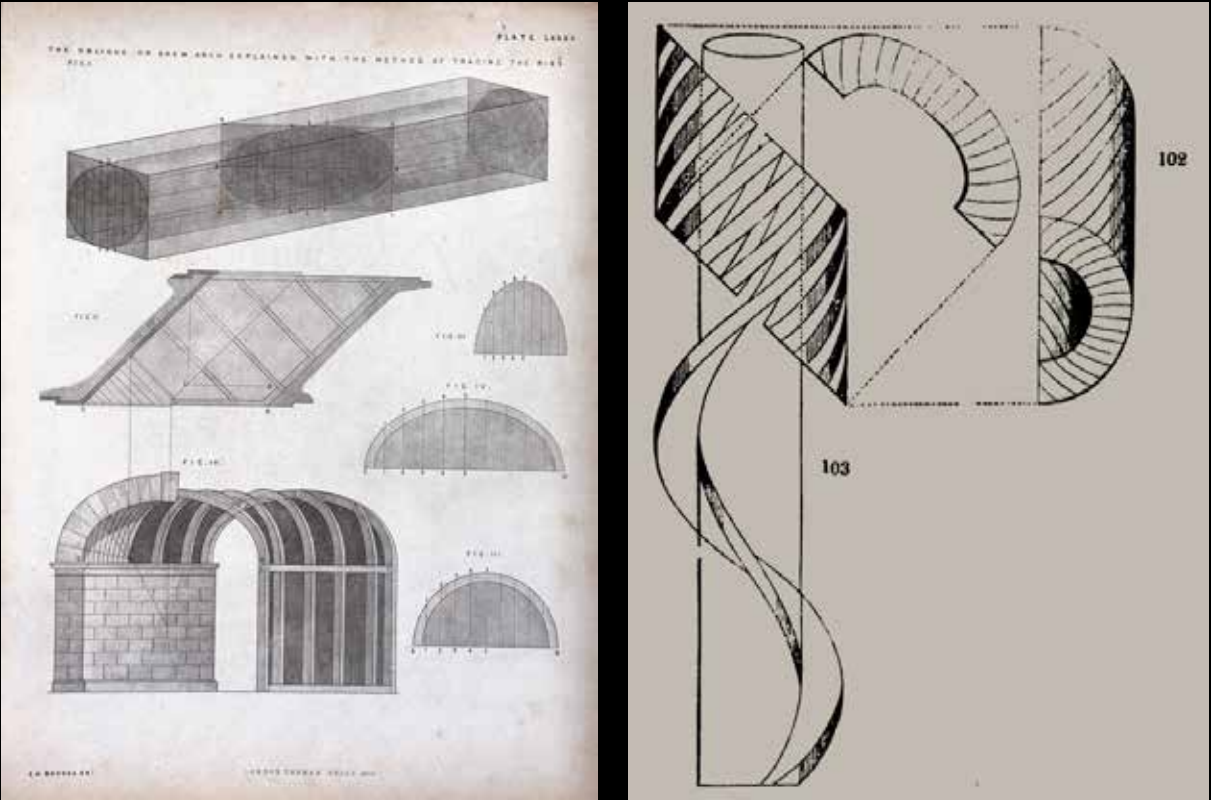
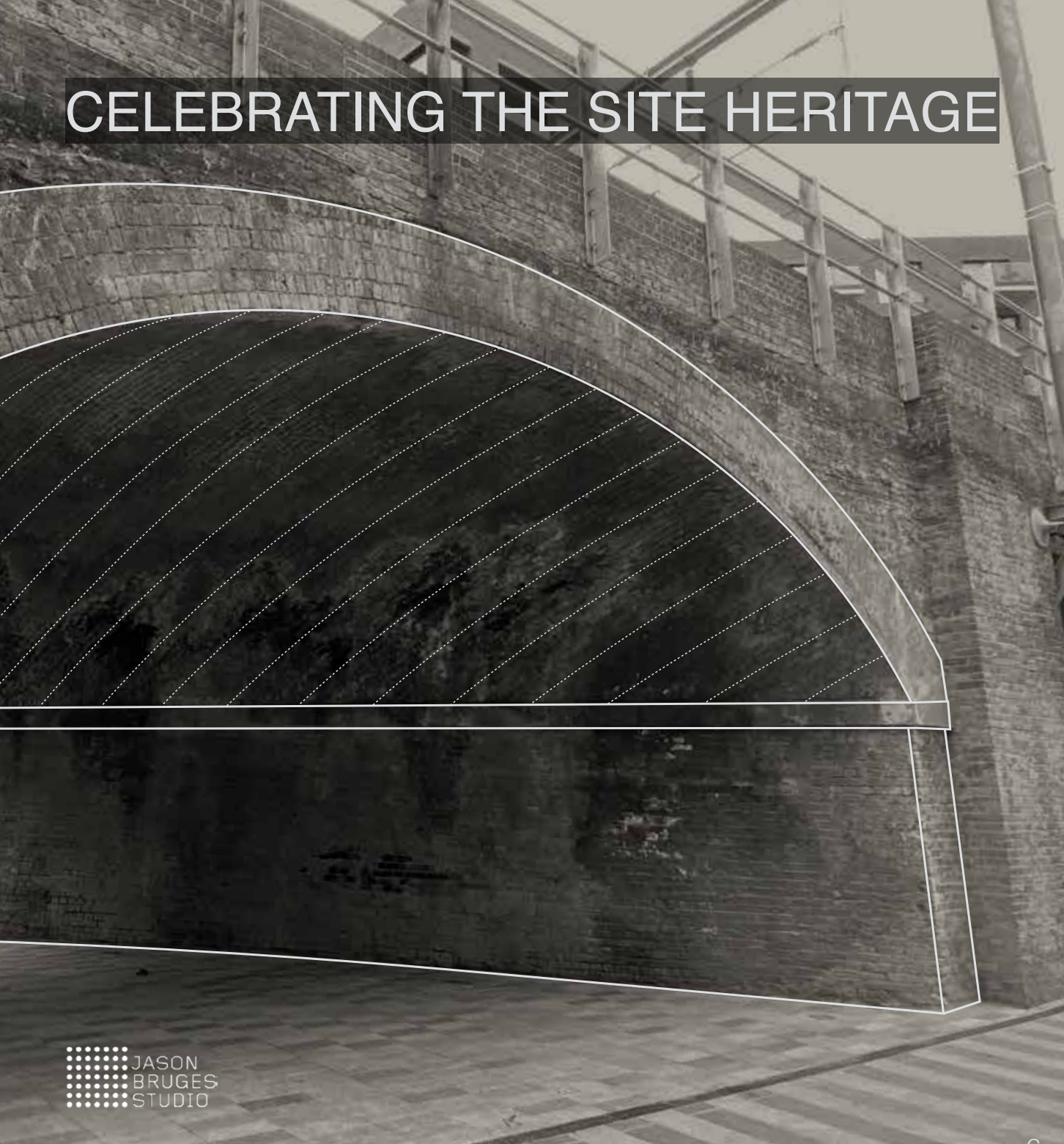


PREVIOUSLY APPROVED PROPOSAL SKETCH OF INTERACTIVE PROJECTION



INTERACTIVE PROJECTION IMAGES REFERENCE

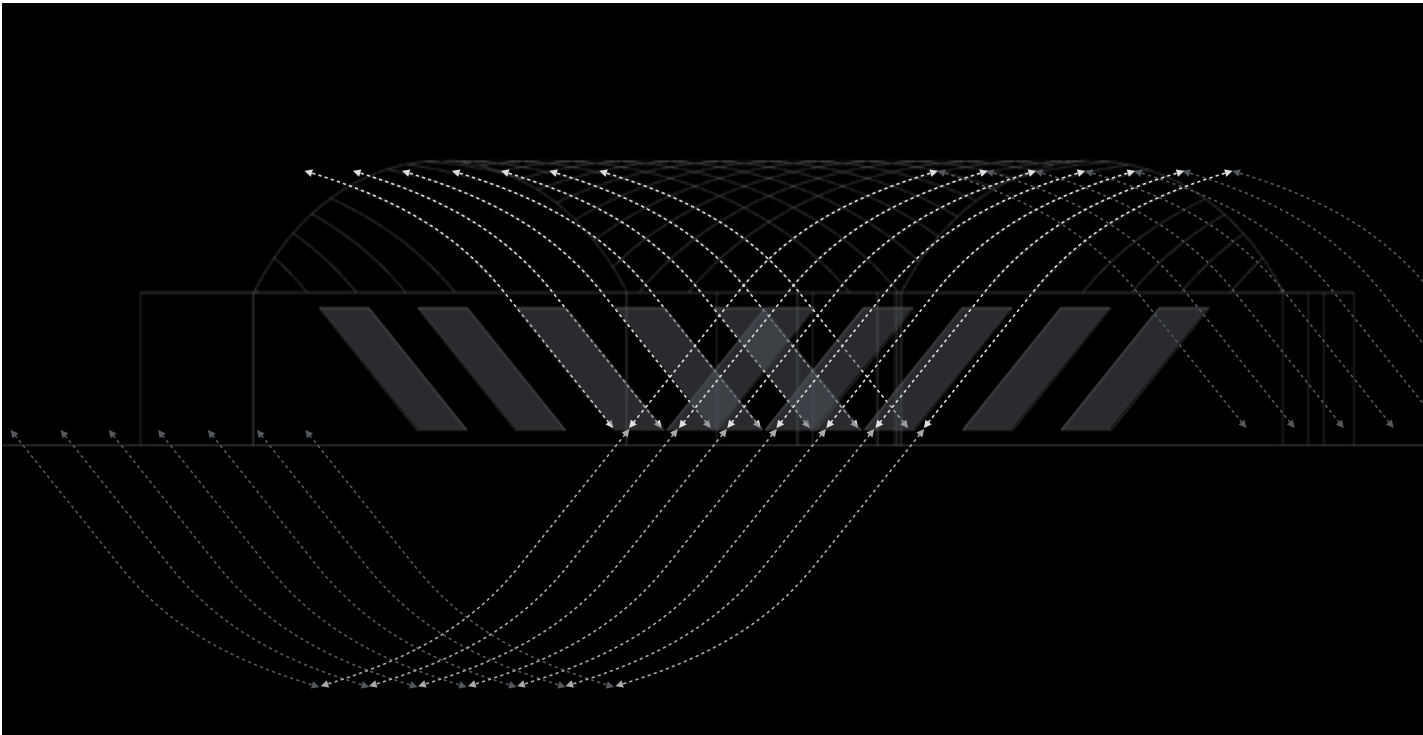




The concept is influenced by the geometry and history of the helicoidal brick arch, used by railway companies across the UK. JBS drew inspiration from the system developed by Charles Fox in conjunction with Robert Stephenson, which describes the helicoidal method of constructing brick skew arches.

Jason Bruges Studio are internationally renowned for producing innovative installations, interventions and ground breaking artworks. Their practice involves creating interactive spaces and surfaces that sit between the world of architecture, site-specific installation art and interaction design. They have produced work around the globe and have recently been commissioned to deliver a monumental robotic artwork to coincide with the Olympics in Tokyo.





Five pairs of parallelogram canvases, derived from the alignment of the brick courses within the skewed arch, will display generative choreographies of light.

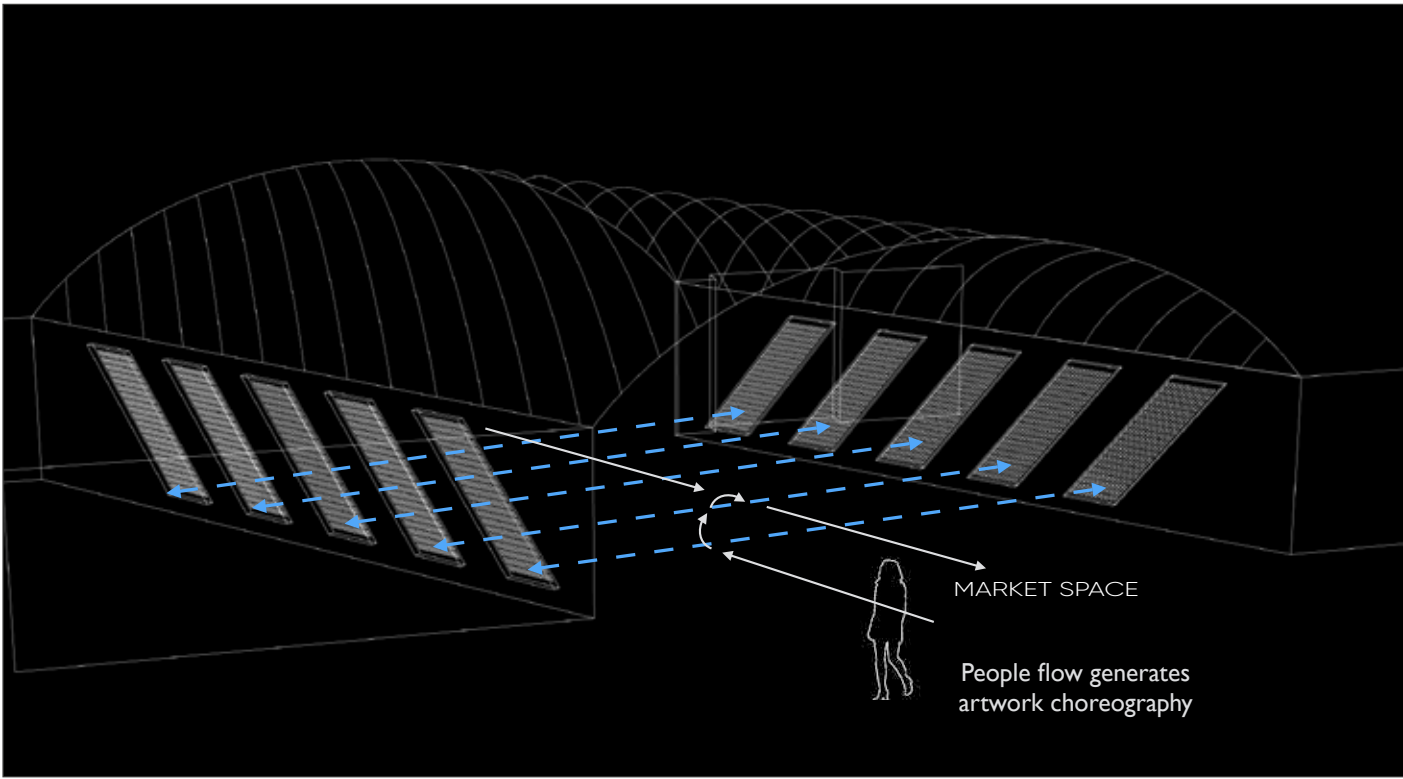
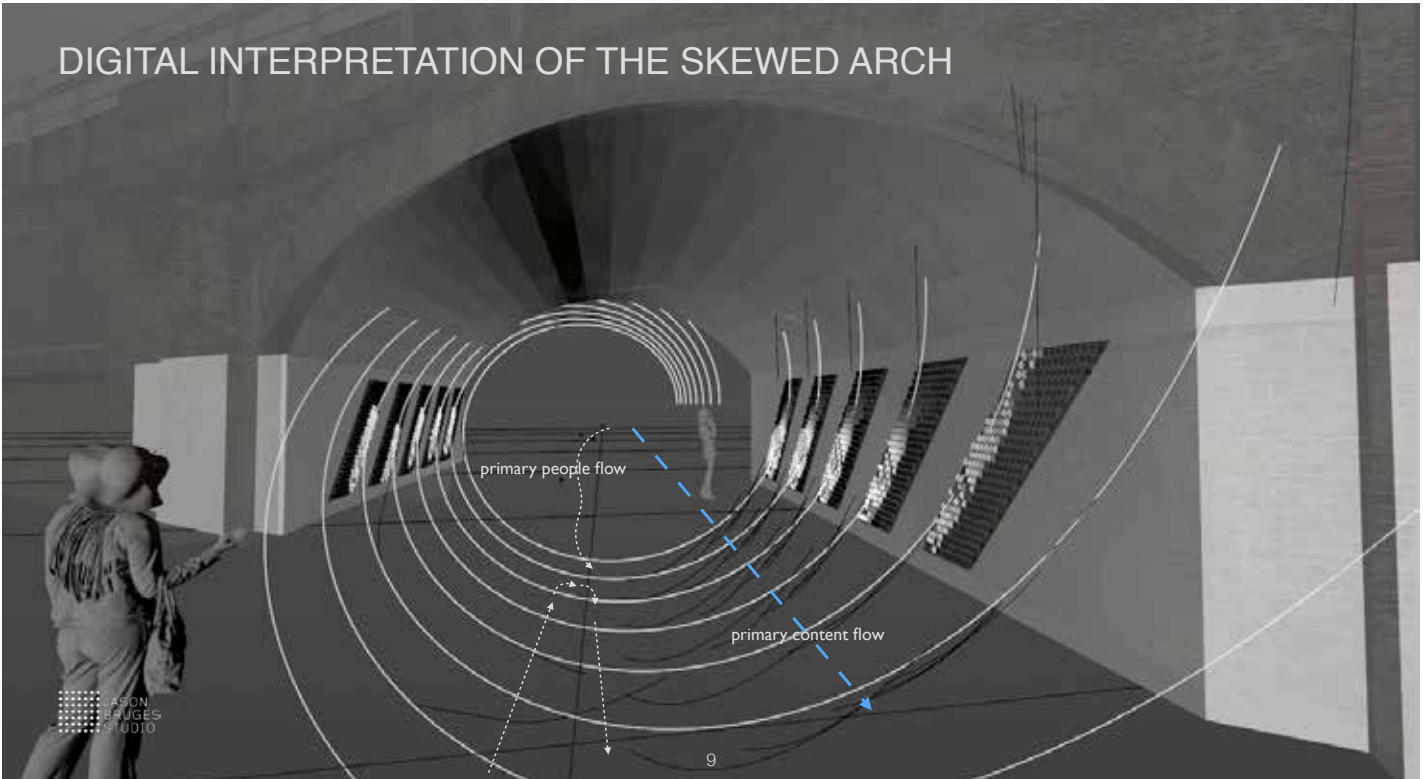
The helix imaginary movement will draw people through the space southwards towards the canal and the market and will create a real time generative content .

The flow of people through the arch will interact with the helix creating an ever changing generative choreographies of light dynamic artwork, reflecting the real time activity of the space.

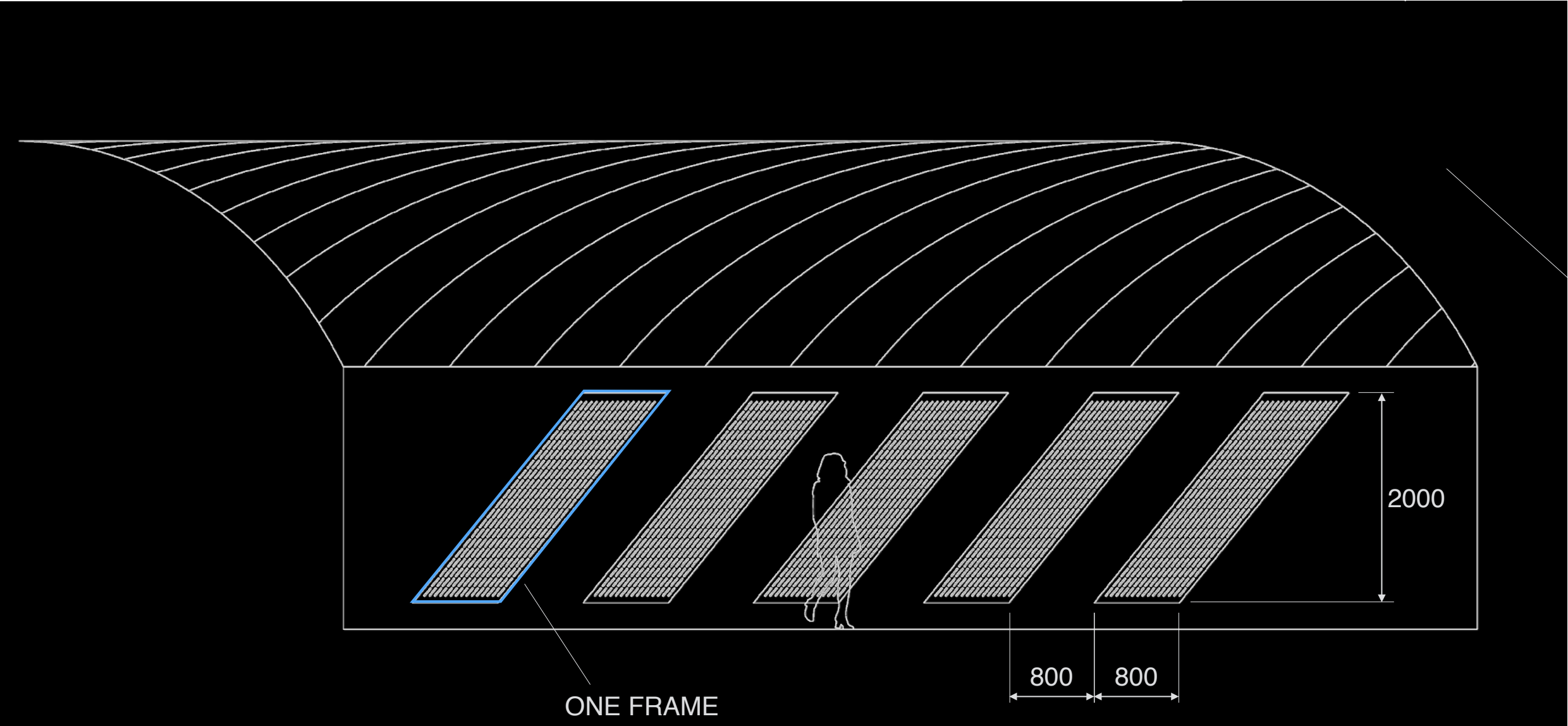
It will also create memories and play back and it could be curated and changed in the future.

The unique aspect of this work will be the geometry and input from the Community at Hawley Wharf.

The idea of digital art being generated by digital shadow play has been explored by Jason Bruges Studio at the Victoria and Albert Museum, Mirror Mirror (2009), Toronto City Art Collection, Back to Front (2012), UK Government Art Collection, Digital Double (2016) and for Wembley Park, Shadow Wall (2019).







A pair of 5 parallelogram canvas arrays are derived from the alignment of the brick courses of the skew arch.



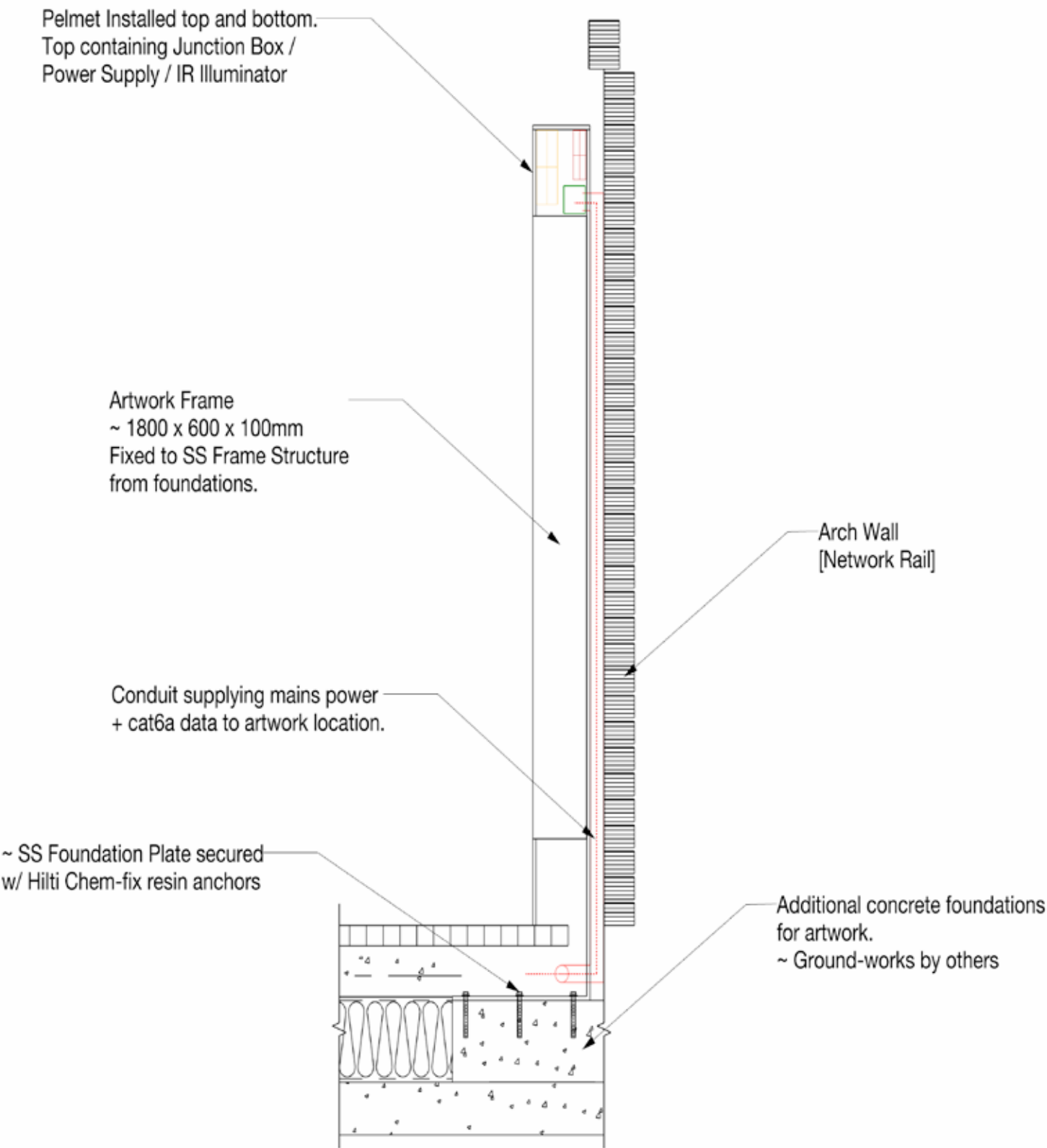




The artworks screens' frame will be fixed to the floor with a 12 mm folded mild steel and power coated plate onto a new concrete slab, with the intent to avoid any impact to the existing historical brick-wall .

No fixing to the arch's wall is needed.

All the power provision will run in conduit under the floor or in the gap between the wall and artwork frame, conduits will not be visible.

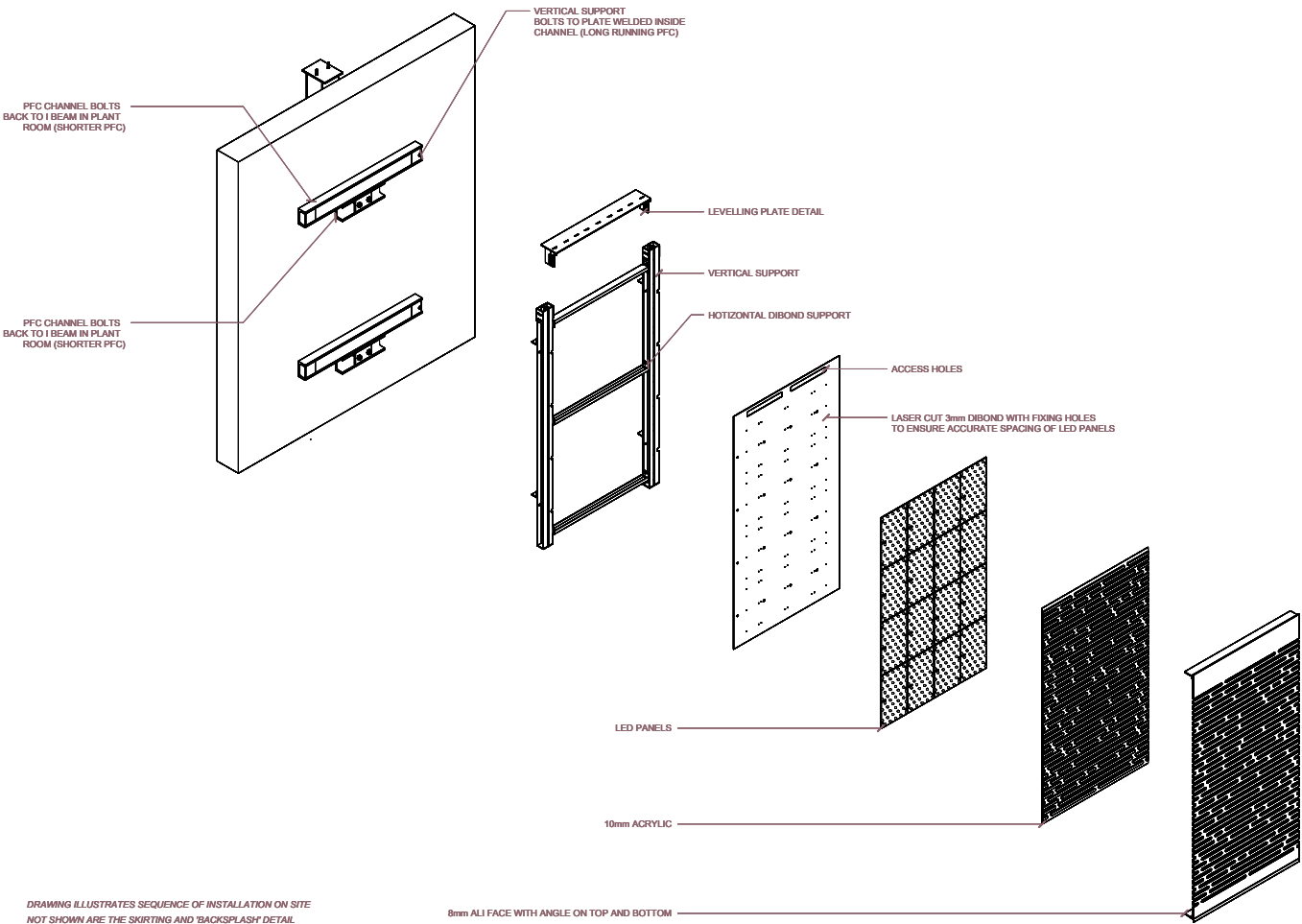
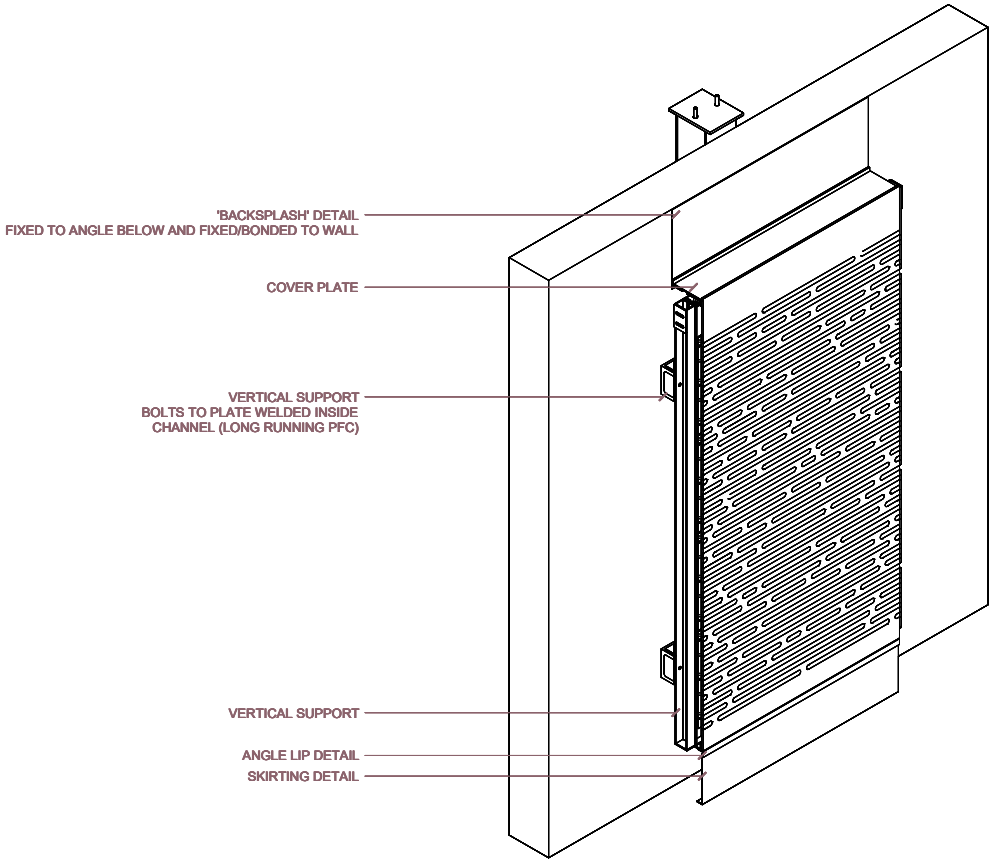


JBS fixing details sketch



# INDICATIVE BUILD-UP

EXAMPLE: SHADOW WALL, WEMBLEY



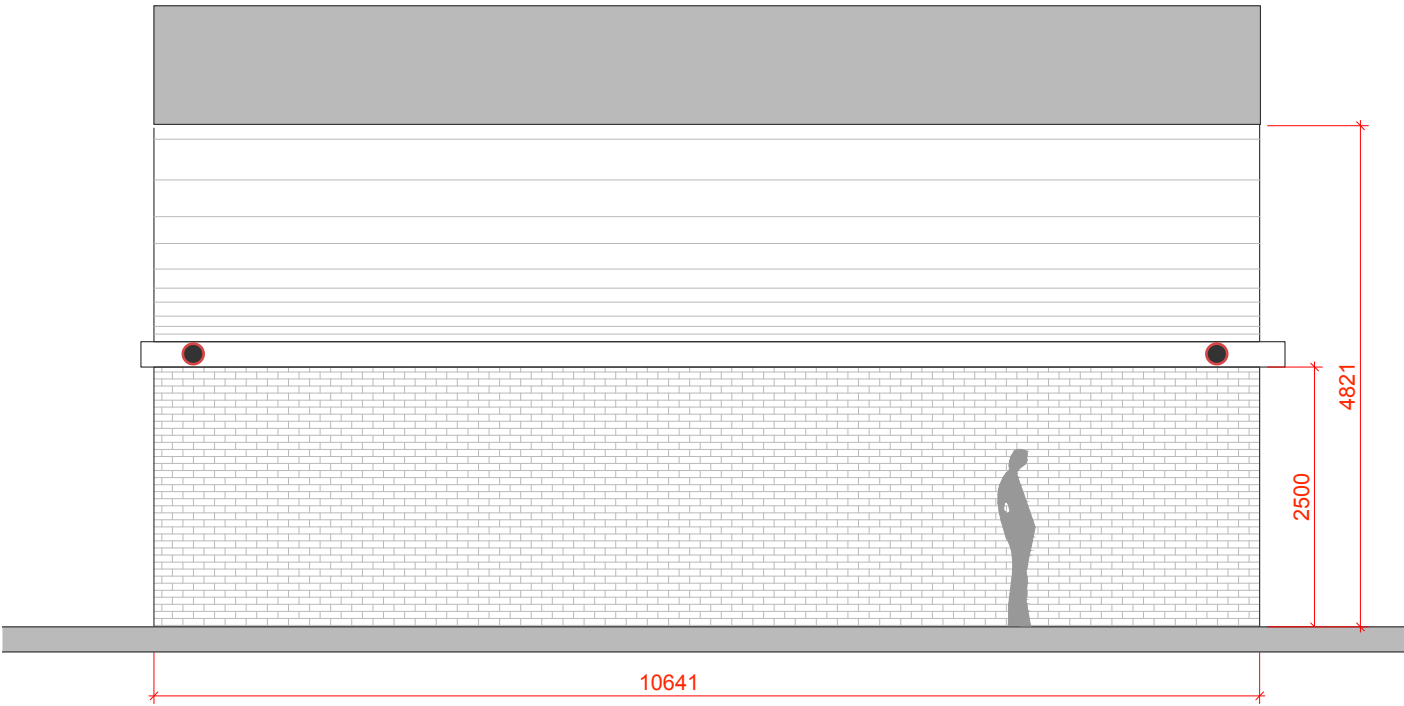
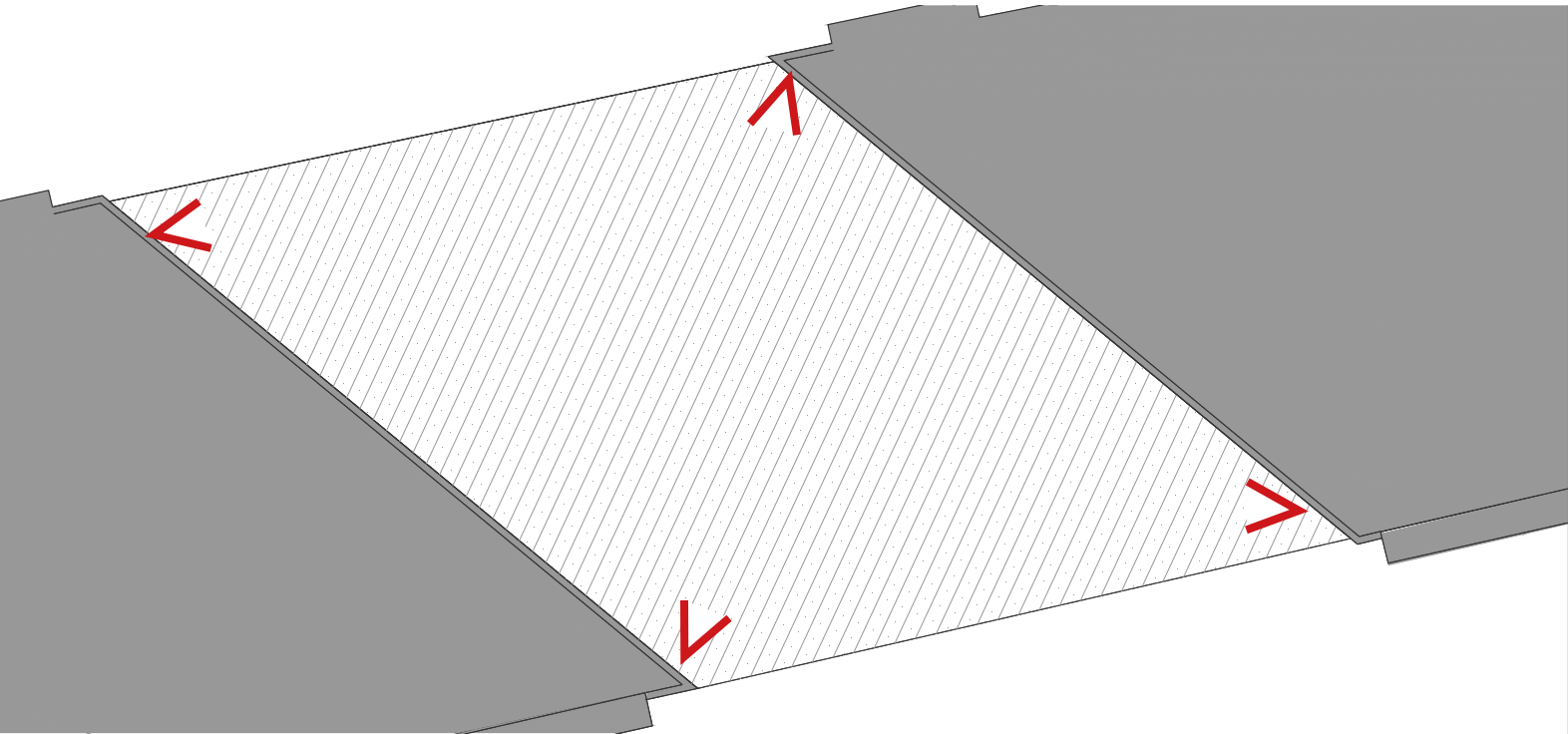


CCTV CAMERAS



Number four CCTV Cameras will be strategically installed to guarantee protection to the artwork.

Specifications :  
 AXIS P3245-LVE Network Camera Streamlined outdoor-ready HDTV 1080p fixed dome for any light conditions, AXIS P3245-LVE offers excellent image quality in HDTV 1080p.  
 This outdoor-ready, IK10-rated camera features Forensic WDR and OptimizedIR illumination to deliver sharp video even in challenging light or complete darkness.



NOTE: final position to be determined on site