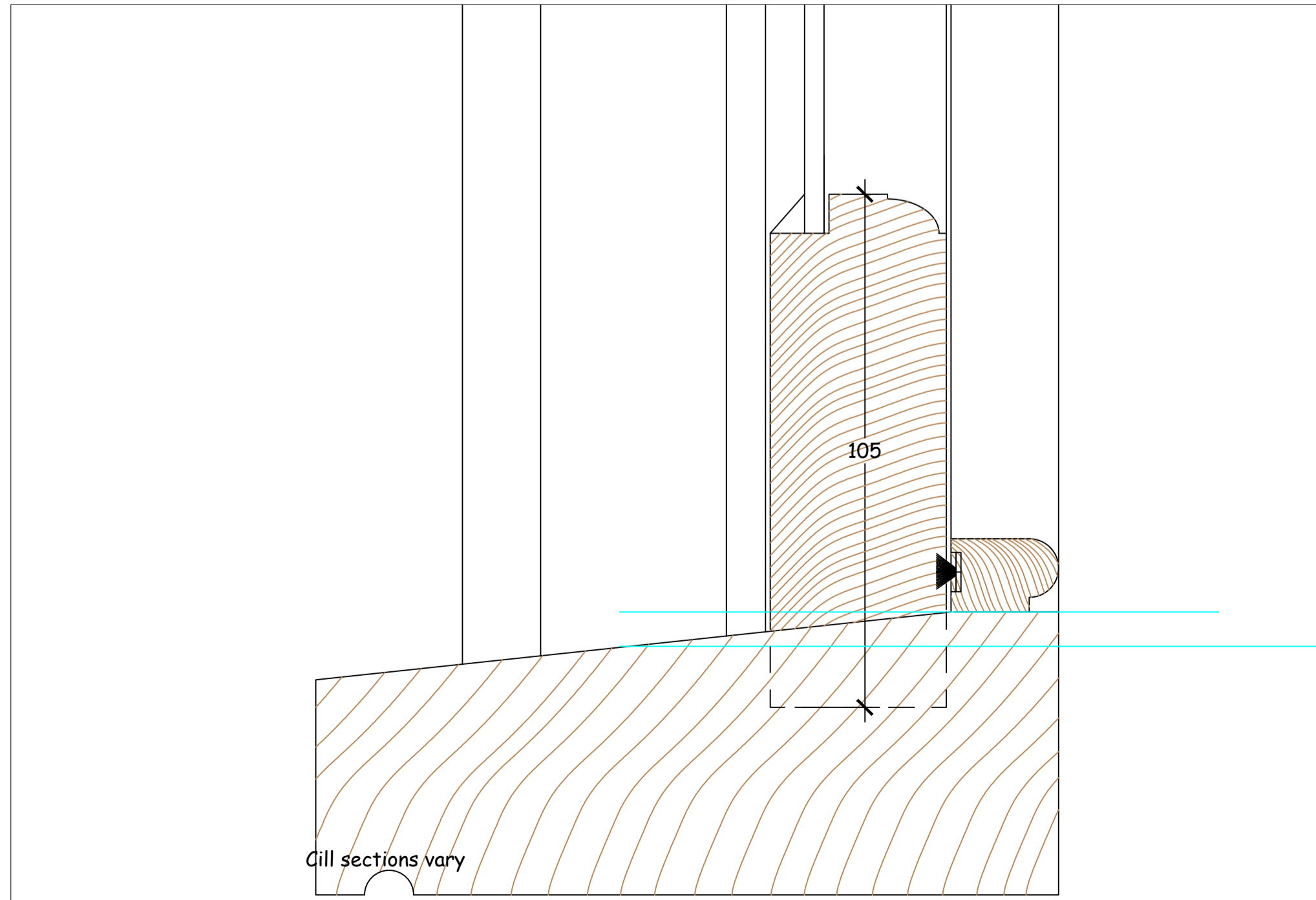
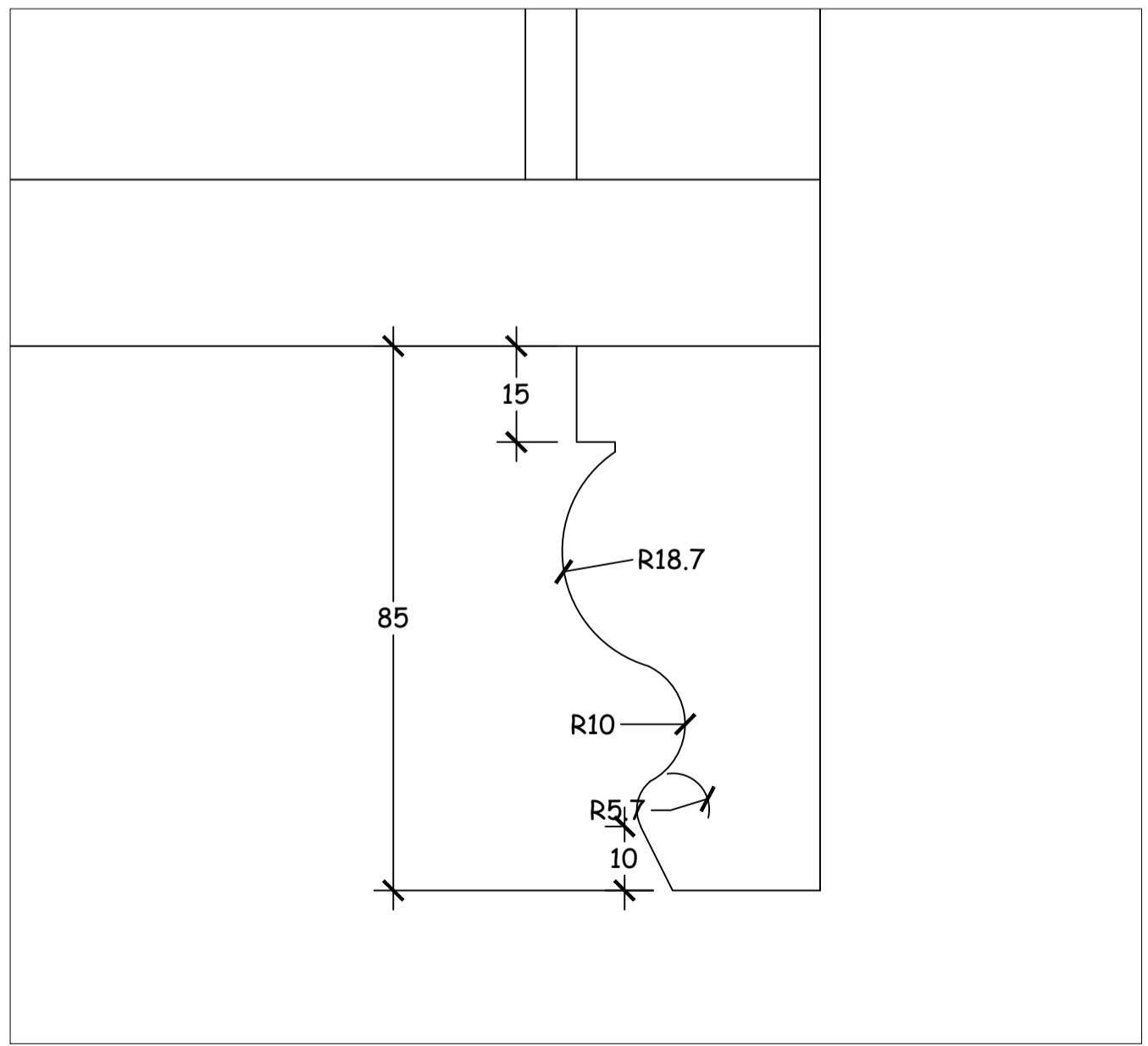
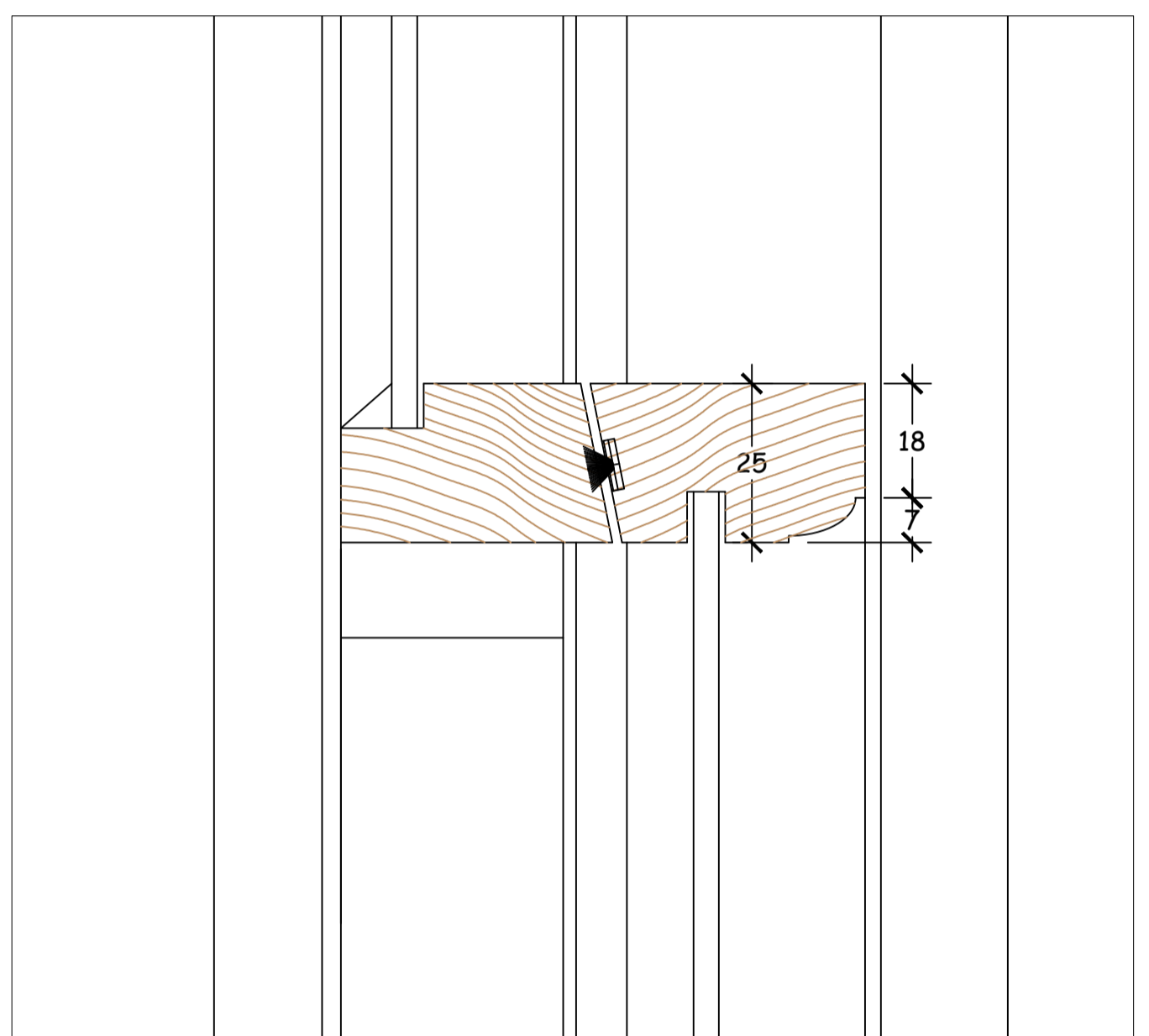
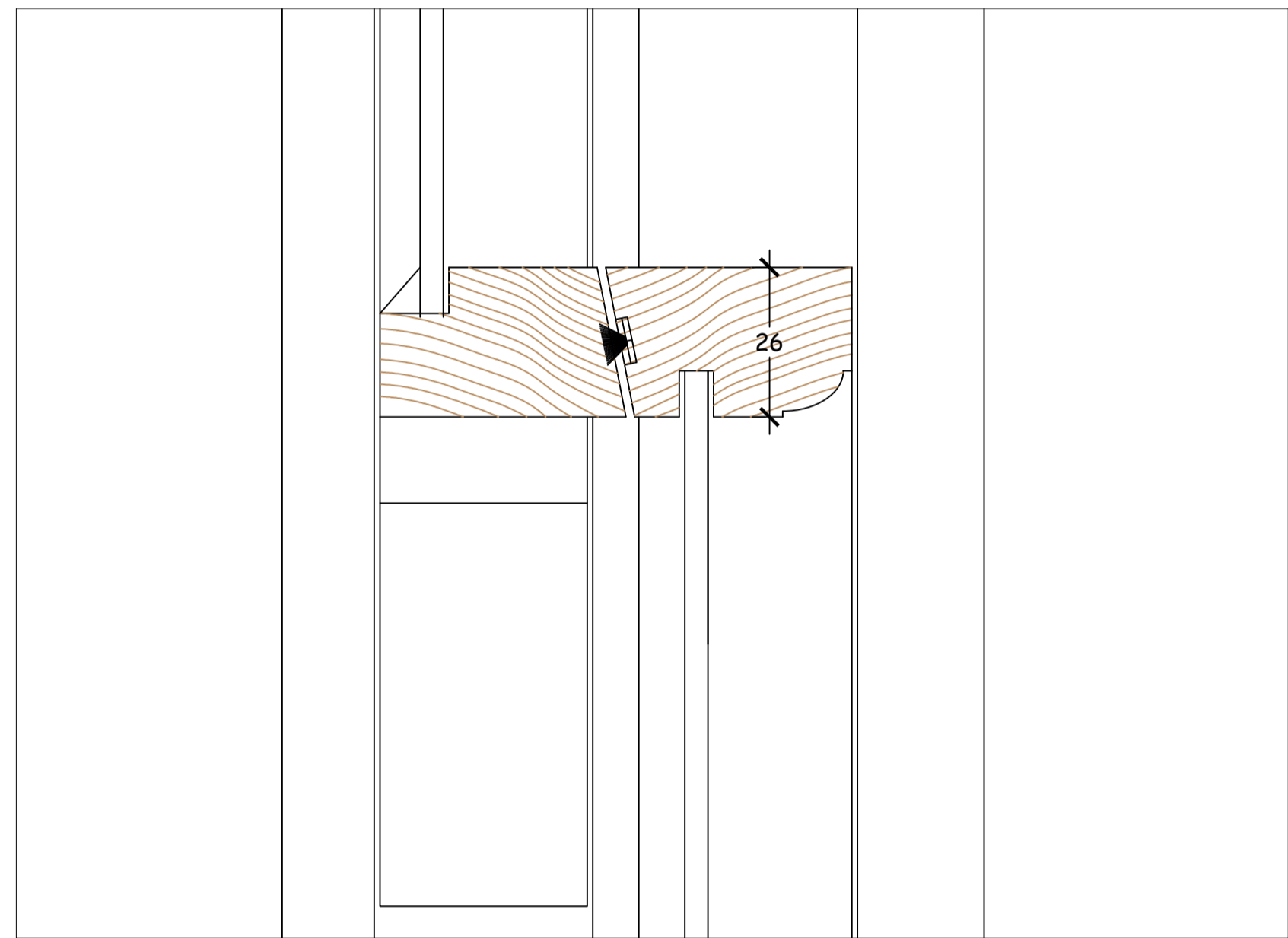
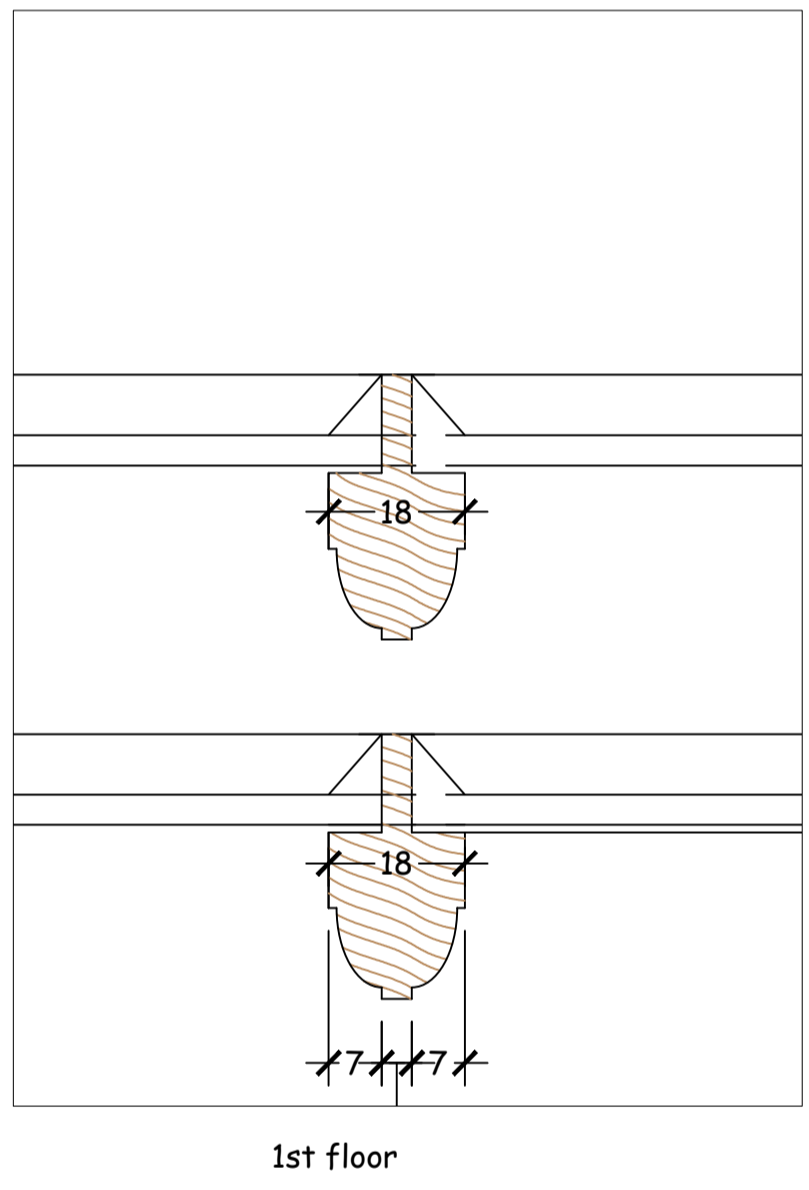


Sashes to be made from Accoya.  
Glass to be 4mm toughened float.  
Ironmongery to be reused where possible, replaced like for like where not possible.  
New staff & parting beads to be used, meeting rails to have draught excluder fitted.



**FOR APPROVAL**

ESTABLISHED 1846

**TAVENER**

JOINERY

188 Iverson Road  
London NW6 2HL  
Tel: 020 7328 7111 Fax: 020 7328 1032

**3 Elm Row**  
**1st & 2nd floor windows**  
Proposed detail with existing sections

Scale	Date	Drawn
1:20 @ A1	23.07.2020	I R
Contract No	Drg No	Revision
9958	05	*