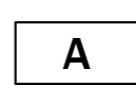
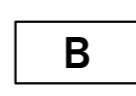


- SINGLE SWITCHED WALL SOCKET
- DOUBLE SWITCHED WALL SOCKET
- SINGLE SWITCHED WALL SOCKET 1200MM ABOVE FLOOR LEVEL
- DOUBLE SWITCHED WALL SOCKET 1200MM ABOVE FLOOR LEVEL
- SINGLE SWITCHED FUSE SPUR BELOW WORKTOP LEVEL
- FUSE SPUR FOR TOWEL RAIL
- SINGLE SWITCHED FUSE SPUR AT HIGH LEVEL FOR EXTRACT FAN
- DOUBLE SWITCHED FLOOR SOCKETS
- 1 GANG LIGHT SWITCH
- 2 GANG LIGHT SWITCH
- 1 GANG 2 WAY LIGHT SWITCH
- 2 GANG 2 WAY LIGHT SWITCH
- 1 GANG 3 WAY LIGHT SWITCH
- 2 GANG 3 WAY LIGHT SWITCH
- 1 GANG PULL CORD LIGHT SWITCH
- EXTERNAL LIGHT
- EXTERNAL LIGHT - BULKHEAD TYPE
- RECESSED DOWNLIGHTER
- RECESSED DOWNLIGHTER (EMERGENCY)
- WALL LIGHT
- LIGHT POINT - PENDANT HOLDER (4 INCH)
- LIGHT POINT - PENDANT HOLDER (6 INCH)
- LIGHT POINT - BATTEN HOLDER
- FLUORESCENT STRIP LIGHT
- ILLUMINATED ESCAPE SIGNAGE
- TV AERIAL POINT
- IMMERSION HEATER AND THERMOSTAT
- MECHANICAL EXTRACT FAN
- DOOR BELL PUSH
- DOOR BELL CHIME
- THERMOSTAT
- SECURITY ALARM
- CONSUMER UNIT
- TELEPHONE POINT
- CAT 5 or 6 DATA SOCKET
- COOKER SWITCH
- MECHANICAL EXTRACT FAN COOKER HOB HOOD
- COMBINED HEAT DETECTOR AND FIRE ALARM SOUNDER
- COMBINED SMOKE/HEAT DETECTOR AND FIRE ALARM SOUNDER
- AUDIO SPEAKER
- RADIATOR
- CAT 5E
- 2 CORE SPEAKER CABLE
- UNDERFLOOR HEATING MANIFOLD

Key



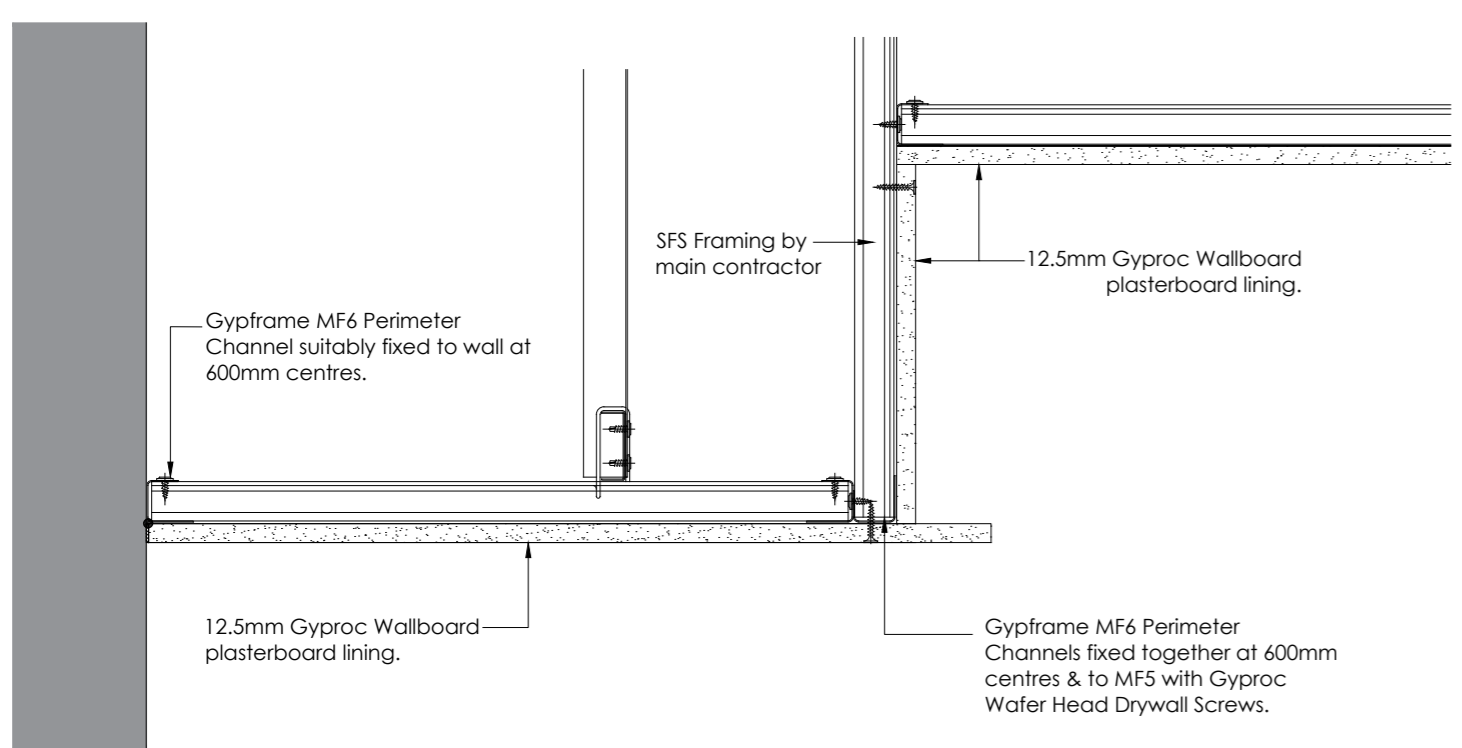
2 layers Gyproc plasterboard or Glasroc specialist board fixed with suitable British Gypsum screws at 230mm centres in field of board & 150mm centres at board ends or equal approved in order to achieve required fire rating.



Suitable external soffit board fixed back to water resistant external grade ply fixed with suitable fixings at 230mm centres in field of board & 150mm centres at board ends or equal approved in order to achieve required fire rating. Fascia board to be suitably sealed to underside of roller shutter using suitable external grade weather sealant.

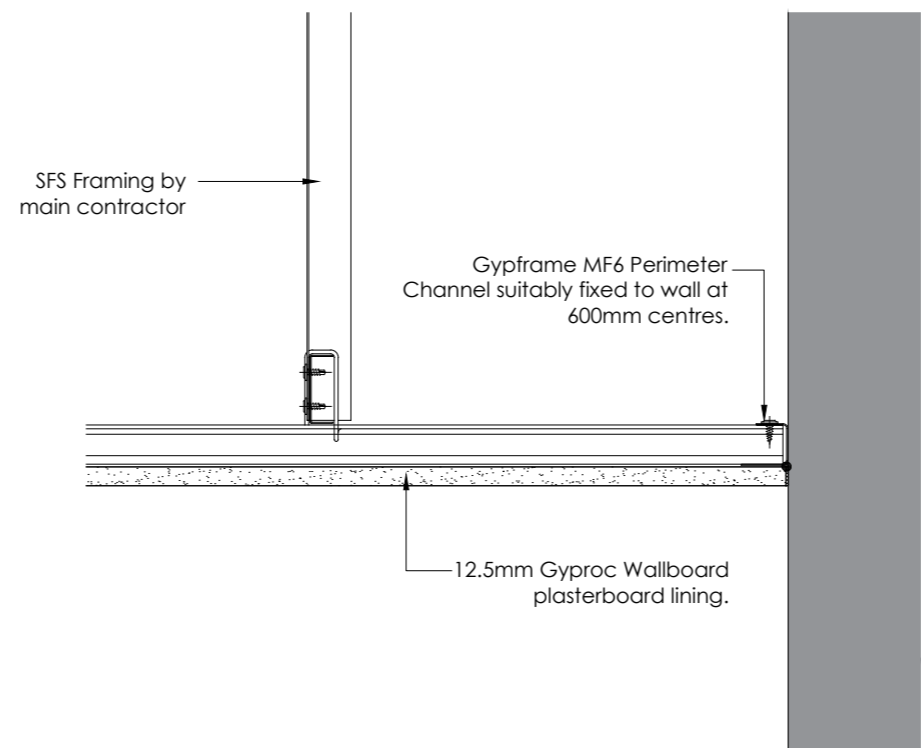
PROPOSED GROUND FLOOR CEILING PLAN

1:50



DETAIL B1

1:5



DETAIL B2

1:5

GENERAL NOTES:
 Mark Yates Architects Ltd accepts no responsibility for any costs, losses or claims whatsoever arising from these drawings, specifications and related documents unless there is full compliance with the Client or any unauthorised user of the following.

- All boundaries, dimensions and levels are to be checked on site before construction and any discrepancies reported to the Architect / Designer.
- Partial Service: Any discrepancies with site or other information is to be advised to the Architect / Designer and direction and / or approval is to be sought before the implementation of the detail.
- Block and site plans are reproduced under license from the Ordnance Survey.
- Do not scale this drawing.
- For the purpose of coordination, all relevant parties must check this information prior to implementation and report any discrepancies to the Architect / Designer.

DRAWING NOTES:

P1	Issued for information	27.05.2020
STATUS	REVISION	DATE

CLIENT	
PROJECT	

PROPOSED CEILING PLAN		
SCALE	VARIES	PAPER SIZE
DATE	27.05.2020	DRAWN BY
DWG No.	AL-35-001	REVISION
		P1
		PROJECT No.
		121-20
DRAWING STATUS		
INFORMATION		
Information contained on this drawing is the sole copyright of Mark Yates Architects Ltd. and is not to be reproduced without their permission.		

PROPOSED CEILING PLAN	
SCALE	VARIES
DATE	27.05.2020
DWG No.	AL-35-001
REVISION	P1
PROJECT No.	121-20
DRAWING STATUS	
INFORMATION	
Information contained on this drawing is the sole copyright of Mark Yates Architects Ltd. and is not to be reproduced without their permission.	

Mark Yates Architects Ltd
 www.myarchitects.uk
 info@myarchitects.uk