

1. Perforated metal folded facade cladding

3. Floor to ceiling sliding glass door with PPC aluminium frame

4. Patinated PPC metal railing

5. Painted, precast parapet coping

6. Painted, timber sash windows

7. Original facade mouldings to be painted RAL 828 'Terra Brown'

6. Painted, timber sash windows

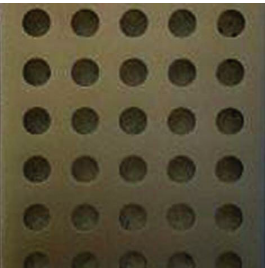
7. Painted, timber sash windows

6. Existing brick, cleaned of all paint and lightly sootwashed

7. Painted, timber sash windows

8. Original shopfront fascia to be reinstated and painted RAL 8028 'Terra Brown'

Shopfront windows and door details not being discharged as part of this application



Material 01

Spec: Perforated metal folded facade
Supplier: ASME Engineering
Finish: Polyester Powder Coated metal
Colour: Patinated dark brown (RAL 8019)



Material 03

Spec: Double glazed, thermally broken, sliding doors
Supplier: Scheuco, ASE60 profile
Finish: Frame to be Aluminium Polyester Powder Coated, matte finish
Colour: RAL 8019
Details: Refer to schedule for details



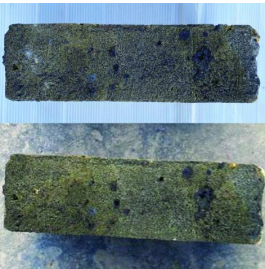
Material 04

Spec: Traditional style metal balustrade
Supplier: ASME Engineering
Finish: Polyester Powder Coated, matte finish
Colour: Patinated Slate Brown (RAL 8019)



Material 05

Spec: Precast Concrete Parapet Coping to match existing
Finish: Painted, matte finish
Colour: RAL 8028 'Terra Brown' to match all mouldings and window frames on front facade



Material 06

Spec: Existing brick cleaned of all paint and lightly sootwashed
Supplier: N/A
Finish: Sootwashed, level of sootwash to be confirmed by LPA



Material 07

Spec: Original timber sash windows reinstated
Supplier: Bereco
Finish: Matte finish, painted timber
Colour: RAL 8028 'Terra Brown'
Details: refer to schedule for details



Material 08

Spec: Original shopfront fascia to be reinstated
Finish: Matte finish, painted timber
Colour: RAL 8028 'Terra Brown', matte finish

NOTE:

Architectural Information - the level of detail shown on the drawings is relative to the submission of a PLANNING APPLICATION.

The drawings should therefore not be used for any other purpose without both the prior agreement of the architect, and subsequent checking / development by others. Dimensions and setting out - should be checked on site; see above

Structure & Construction - these drawings, unless expressly noted otherwise, have not been fully coordinated with a Structural Engineer's input and show indicative construction build-up only

Building Control - the client / the contractor will liaise directly with Local Authority to ensure the project is completed in accordance with the Building Regulations

Planning - the client/ the contractor will ensure that the project is completed in accordance with the approved Planning drawings and take responsibility for the discharge of any planning conditions

Party Walls & Rights to Light - the client/ the contractor will ensure that any notices and consents required are obtained before work commences

Freshholder / Leaseholder / Restricted covenants / Easement approvals - the client will ensure that any notices and consents required are obtained before work commences

Archaeological & Ecological - the client/ the contractor will ensure that any notices and consents required are obtained before work commences

Glazing Allowances will need to be negotiated with Building Control as per Approved Document L1B Conservation of Fuel and Power

Areas provided on drawings are rounded to the nearest whole unit. Measurements are based upon received survey information and as such a reasonable allowance should be made for discrepancies or deviations that may occur during construction.

Drawn By: SA Checked By: GJ Date: 06.07.2020

| Revisions | | |
|-----------|-------------------------|------------|
| No. | Description | Date |
| A | RAL colour confirmation | 06.07.2020 |
| | | |
| | | |
| | | |
| | | |
| | | |
| | | |

PLANNING

Note: Do not scale from this drawing. All dimensions to be checked on site by the contractor and to be his responsibility.

HÛT Architecture
Studio 408
134-148 Curtain Road
London
EC2A 5AR
T 020 7390 8680
E info@hutarchitecture.com
Project Name: Farringdon Road
Project Number: 1501

Drawing Name
Condition 4C - Material Specification - Front
Drawing No
P054
Revision
A
Scale
1:50 @ A1, 1:100 @ A3

