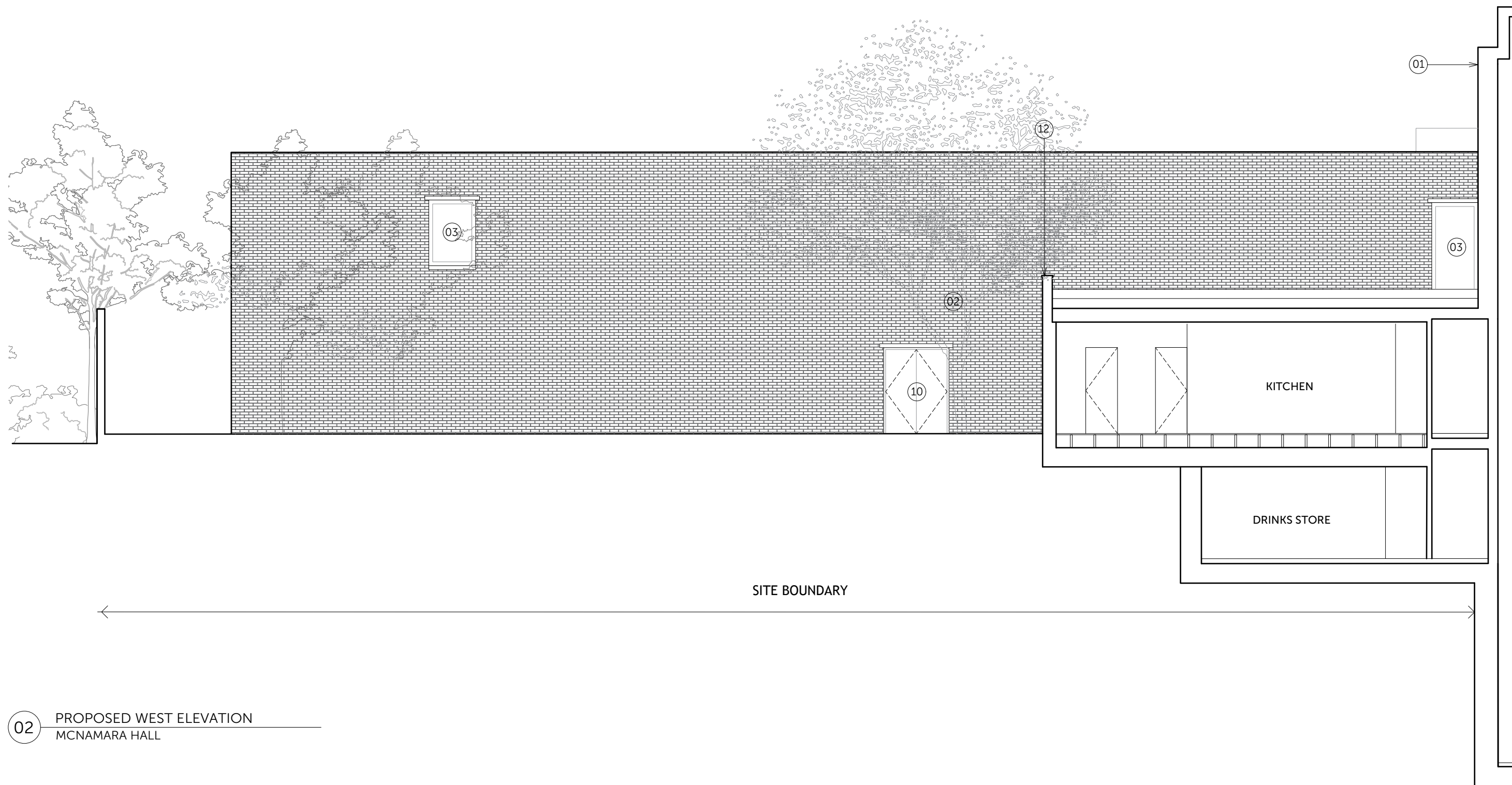
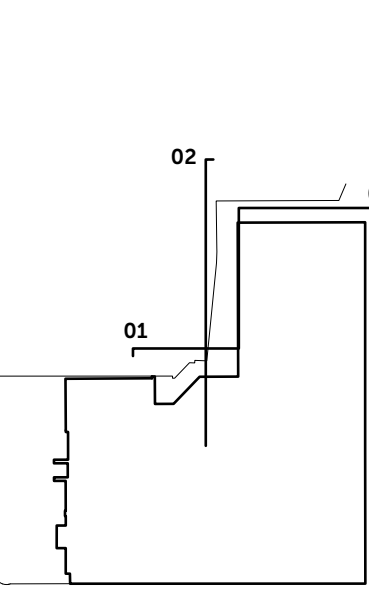
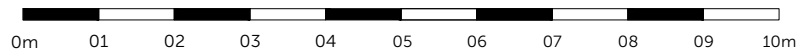


01 PROPOSED NORTH ELEVATION
MCNAMARA HALL



02 PROPOSED WEST ELEVATION
MCNAMARA HALL



3rd FLOOR PARAPET
+47.040 m

MURRAY STREET PARAPET
+44.980 m

3rd FLOOR FFL
+43.780 m

2nd FLOOR FFL
+40.380 m

1st FLOOR FFL
+37.180 m

GROUND FLOOR FFL
+33.980 m

MCNAMARA HALL PARAPET
+44.380 m

2nd FLOOR FFL
+40.380 m

1st FLOOR FFL
+37.180 m

GROUND FLOOR FFL
+33.980 m

Disclaimer

1. Do not scale. Use figured dimensions only. When a scale bar is provided it is for use by the local planning authority solely for the purposes of the planning application to which it relates.
2. Report all drawing errors, omissions and discrepancies to the Architect.
3. All dimensions are to be checked on site by the contractor and such dimensions shall be the contractor's responsibility.
4. This drawing must only be used for the purpose for which it is supplied and its contents must not be reproduced for any purpose without written permission.
5. No areas indicated, or areas calculated from this drawing should be used for valuation purposes or as the basis for development contracts.

© All copyrights Coffey Architects.

Revision	DATE	DESCRIPTION
P1	19.03.20	PLANNING SUBMISSION
P2	29.07.20	PLANNING REVISIONS

- LEGEND
- 01 LIGHT BRICK
 - 02 DARK BRICK
 - 03 TIMBER FRAMED GLAZING
 - 04 PERFORATED BRICK
 - 05 TIMBER DOORS/FRAME
 - 06 METAL GATE
 - 07 METAL SCREEN
 - 08 NEW RENDERED WALL
 - 09 SIGNAGE
 - 10 METAL DOORS
 - 11 NEW SASH WINDOWS
 - 12 EXISTING BRICKWORK
 - 13 REMOVABLE BOLLARDS

COFFEY / ARCHITECTS

11-12 Great Sutton Street, London, EC1V 0BX / +44 (0)20 7549 2141
www.coffeyarchitects.com

Project Name LONDON IRISH CENTRE	Project No. 1120
Drawing Name PROPOSED NORTH & WEST MCNAMARA HALL ELEVATIONS	
Status PLANNING	
Drawn JW	Checked LM
Scale 1:100 1:200	Sheet A1 A3
Drawing No. 1120_A202	Revision No. P2