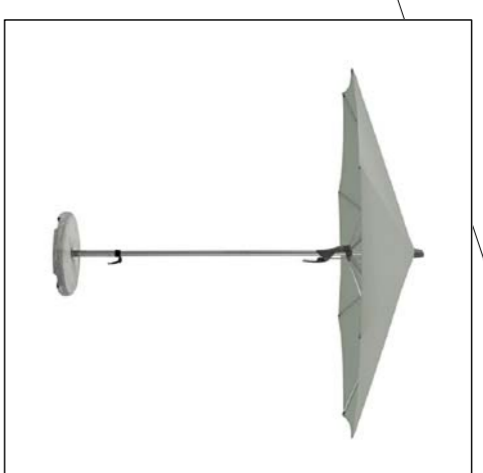


HIGH HOLBORN

KERB

UMBRELLA AND BASE
TO BE USED FOR EACH
TABLE.



GLATZ FORTINO®
GIANT UMBRELLAS,
ALUMINIUM FRAME,
2000MM X 2000MM
SQUARE COLOUR 678



GRANITE UMBRELLA BASE,
ROUND, 25KG
UMBRELLA BASES
BAG0255

212

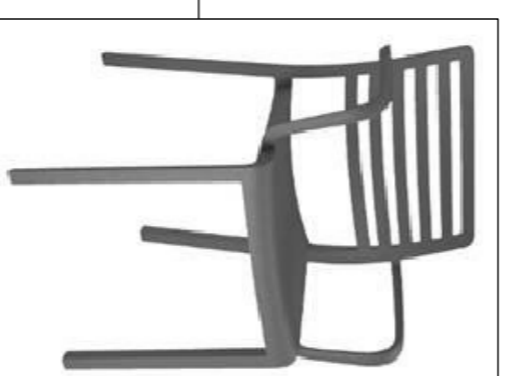
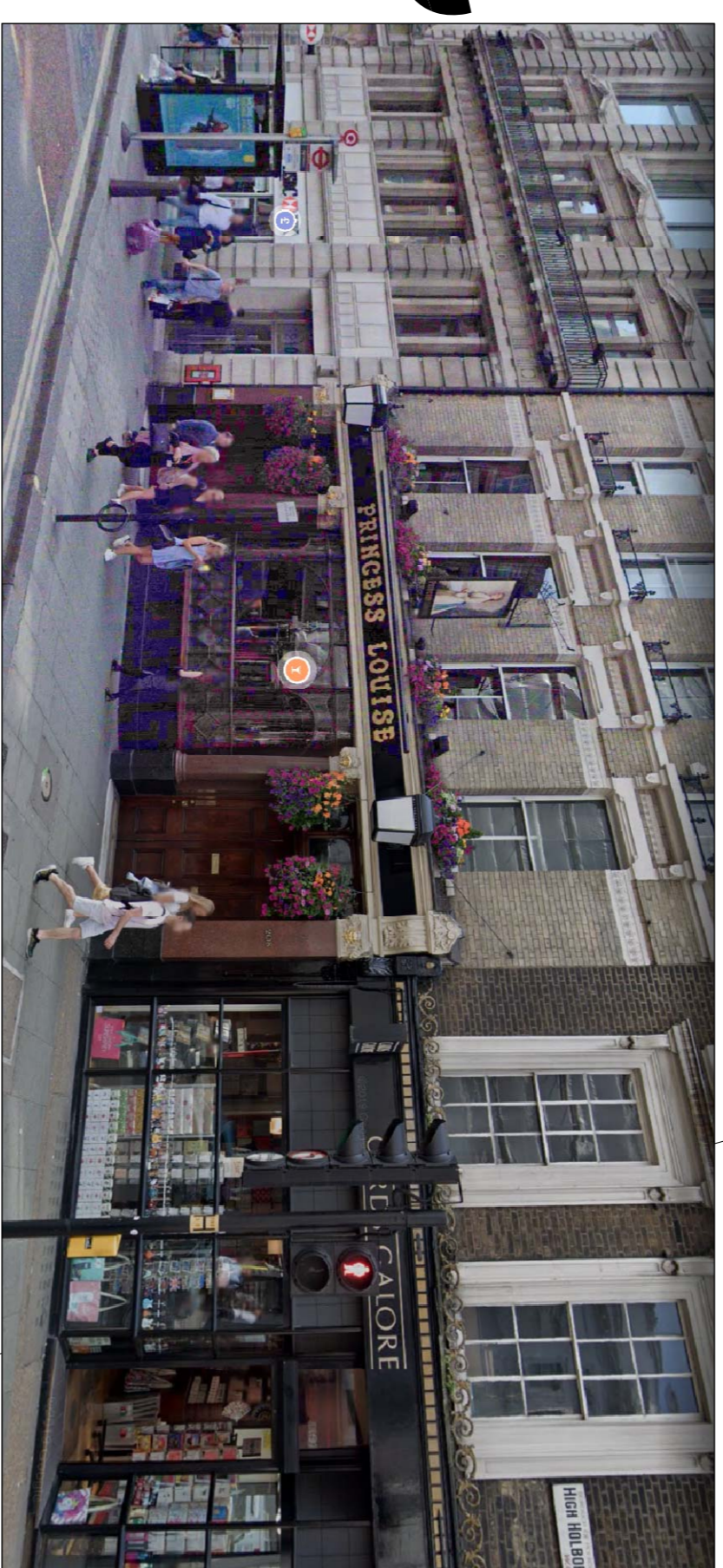
Bar

SITE DIMENSIONS TO
BE CHECKED PRIOR TO
MANUFACTURE AND
INSTALLATION.

This drawing is the property of ANDREWS AND BOYD. Copyright is reserved and this
drawing is issued on the condition that it is not copied or disseminated by or to any
unauthorised persons without the prior consent in writing of ANDREWS AND BOYD. This
drawing is not to be scaled for the purposes of setting-out. Dimensions to be checked on
site and verified prior to construction.

212

Bank



BENTLEY ARM CHAIR



MONACO TABLE TOP



BENTLEY SIDE CHAIR



POLISHED ALUMINIUM STACKING BASE



ROPE AND POST BARRIER

Notes:		North		Client		Project		Andrews + Boyd Consultants Limited	
		ANDREWS AND BOYD		Princess Louise 208 High Holborn London WC1V 7EP		24 Old Burlington Street, London, W1S 3AW			
		Scale 1:50 @ A1		Drawing No. P001					
		Date JULY 2020		REVISION					
				Drawing Title EXTERIOR SEATING ZONE					