

GUNN

Architects
Designers
Masterplanners



Planning conditions

87-89 CAMDEN MEWS, LONDON, NW1 9BX



July 2020
Doc Ref. 682.SD.001A

Planning Condition 2018/5462/P_3_Discharge Document

3 Before the relevant part of the work is begun, detailed drawings, or samples of materials as appropriate, in respect of the following, shall be submitted to and approved in writing by the local planning authority:



PART B (PARTIAL DISCHARGE OF CONDITION 3)

b) Manufacturer's specification details of all facing materials (to be submitted to the Local Planning Authority) and samples of those materials (to be provided on site).

020 7377 5458
gunn-associates.com



GUNN



1. Buff Brick

Imperial Weathered Original London Stock to be used on front, rear and side elevations.



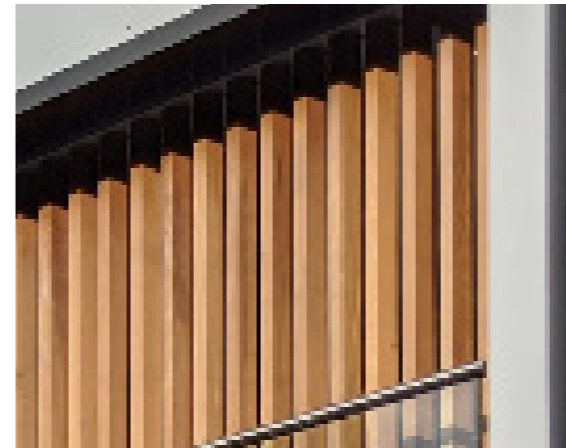
2. Render

Weberpral M in Silver Pearl to be applied to top floor behind timber cladding.



3. Vertical timber cladding

Vertical timber cladding banding to be Contrazol Western Red Cedar or similar to top floor.



4. Vertical timber handrail

Vertical timber handrail to be Contrazol Western Red Cedar or similar.



5. Glass balustrade

Q- Railing, Easy Glass View Juliet balcony to rear windows at first floor.



6. Vertical slatted timber

Vertical slatted front facade timber to windows and doors at ground floor to be Contrazol Western Red Cedar or similar.

GUNN



1. Buff Brick

E H Smith Architectural Clay
Products 14013620 Yellow/
Buff Multi Brick



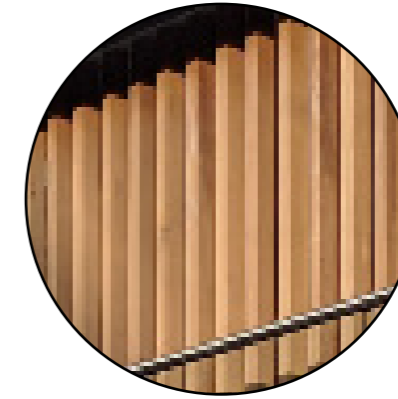
2. Render (behind timber)

Weberpral M in Silver Pearl



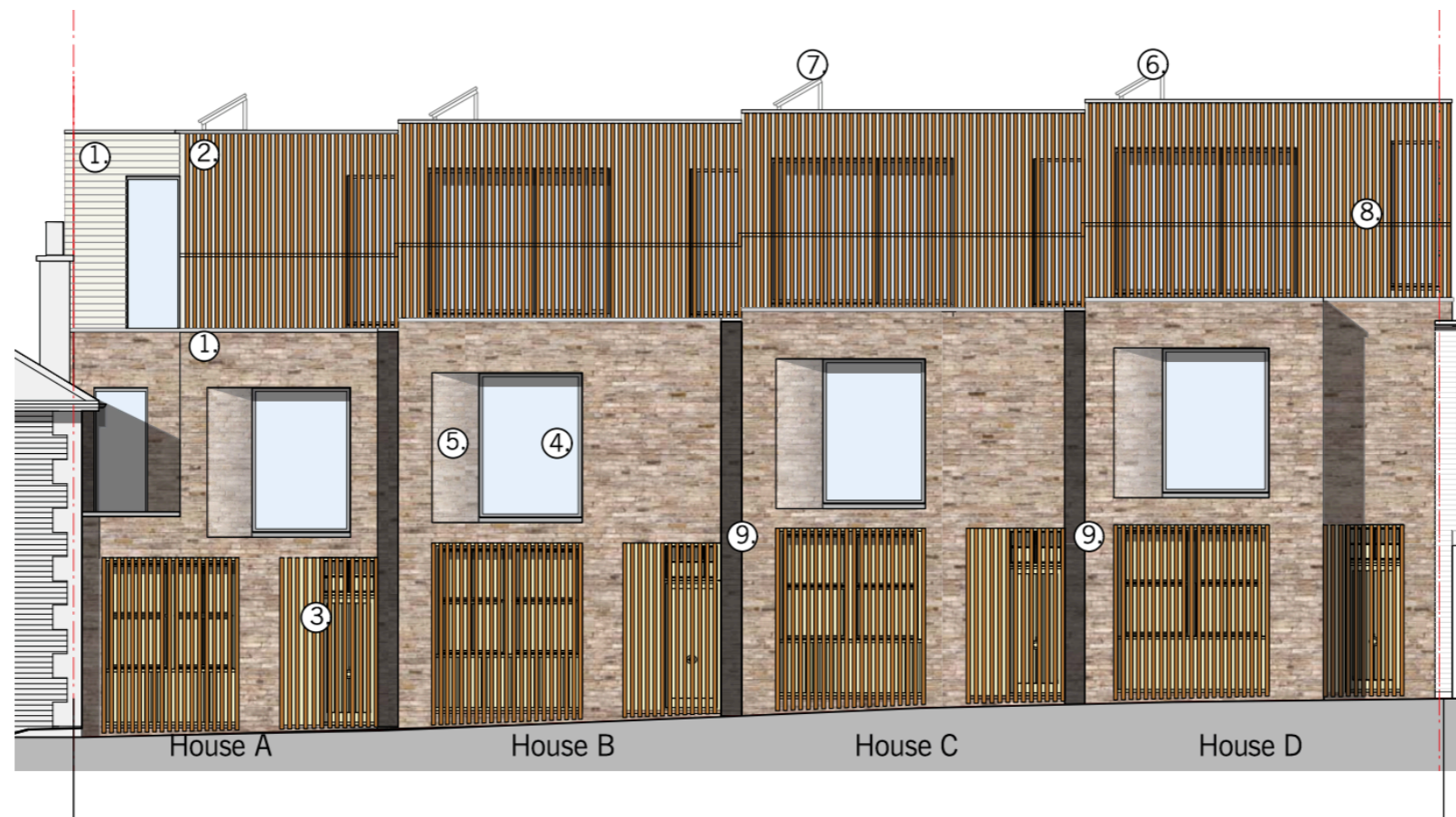
3. Vertical Slatted Timber

Contrasol Western Red Cedar



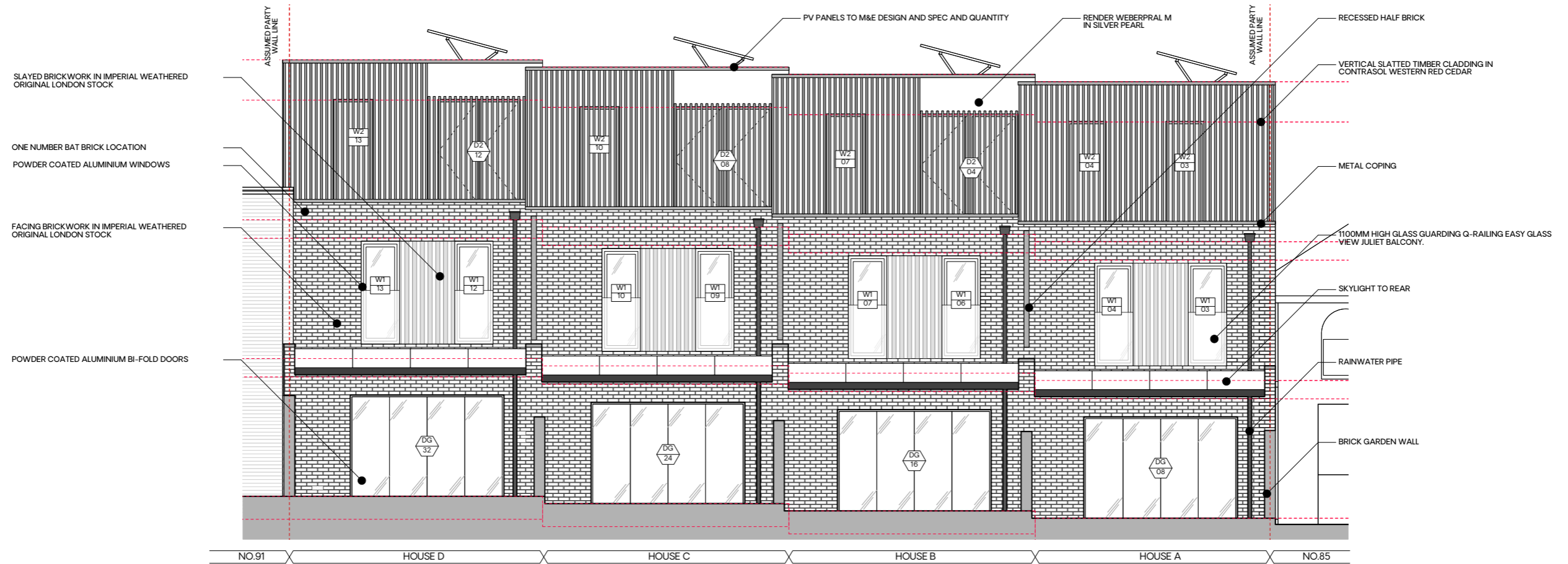
8. Timber Handrail

Contrasol Western Red Cedar





01 PROPOSED FRONT ELEVATION
1:50 @ A1



02 PROPOSED REAR ELEVATION
1:50 @ A1

