



Base & Build Details- Tree Protection measures

- Green Retreats Ltd have been appointed to build a timber clad building at 4 Iambolle Road London NW3 4HP Style TGO4 <https://www.greenretreats.co.uk/>
- The Green Retreat studios are prefabricated panel structures assembled by hand and have an installation time of 2-7 days.
- No trees will need to be removed as a result of this build and every care will be taken during the build process to protect any trees within the garden
- There are trees within possible falling distance so we will therefore ensure the build does not impact any underlying root systems these trees are on the eastern boundary of the perimeter of the property

Our buildings are installed on a shallow pad system and are set 1m apart under the entire building.

- We have included in this document details on the proposed method for building the foundation.

Fig 1 (TPO Foundation Used)

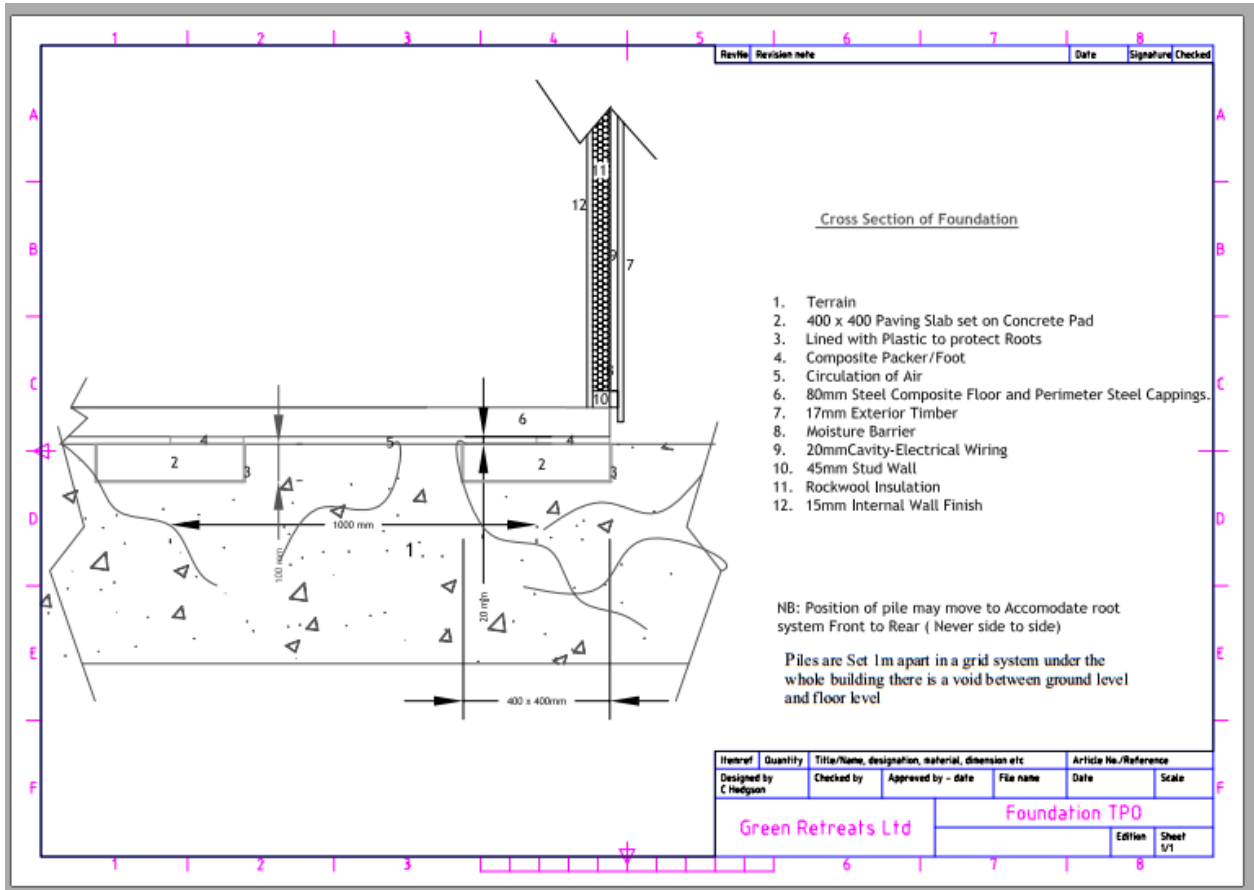
Fig 2 (Base Layout)

Fig 3 (Photo showing location of proposed building)

- The proposed method will ensure protection of the underlying roots by: – Limiting the depth of the foundation
 - Hand-digging holes to allow the local manipulation required to avoid impacting roots
 - Protecting any roots uncovered through the build
 - Lining holes with plastic if a root system is within the build area this will ensure no concrete mix comes into contact with root systems
 - Mixing the concrete away from the site / roots (and on a covered surface)
 - Establishing continuous monitoring of the build practices to ensure no trees are impacted
- All Works will be carried out by hand no use of machinery or plant will be required.
- See details below of our standard pads system & the system for trees

Fig 1

Tree Foundations Details



Concrete pads are at a depth of 150- 200mm

Typical layout of concrete pads for this building with an internal size of 4.5 x 4.5m
 The support pads are set at 1m internal under the entire base.

Fig 2

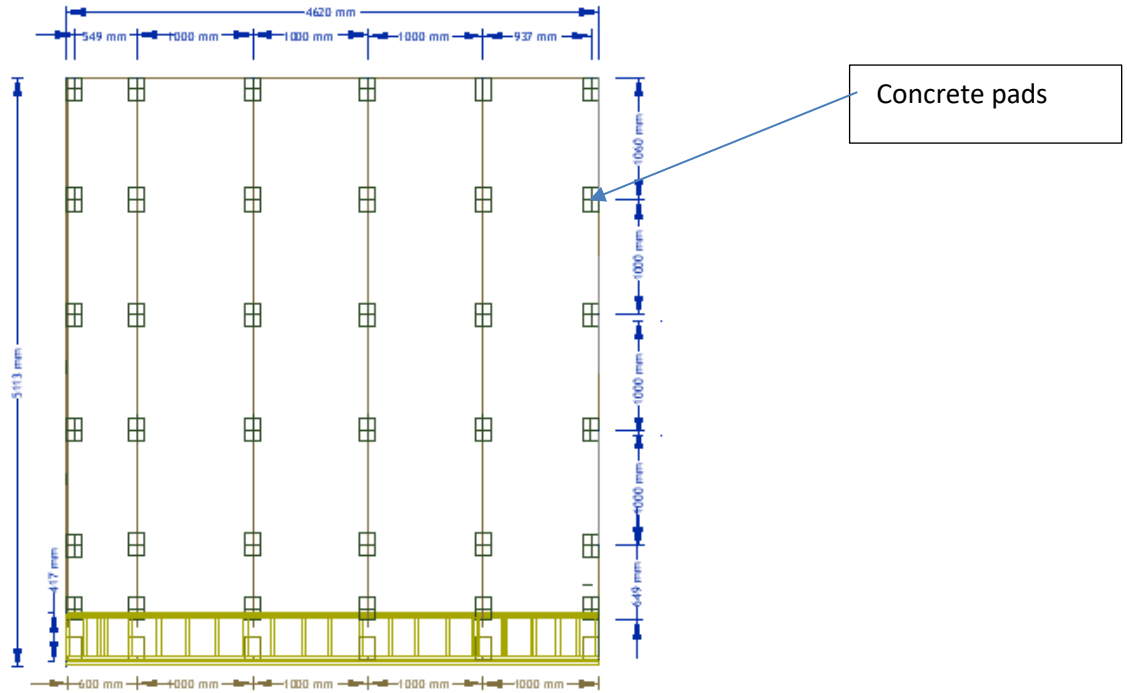


Fig 3 Photo showing building position within the garden

