



Photo 1

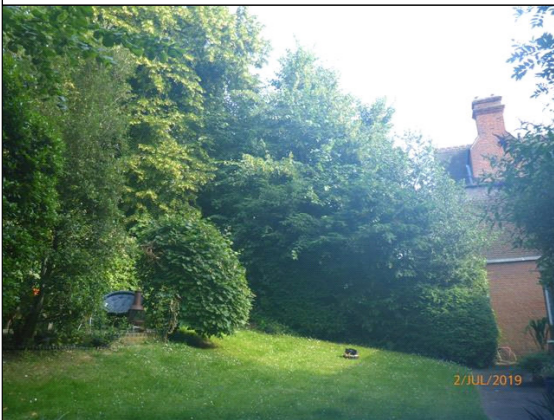


Photo 2

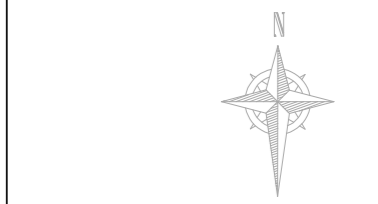


Photo 3



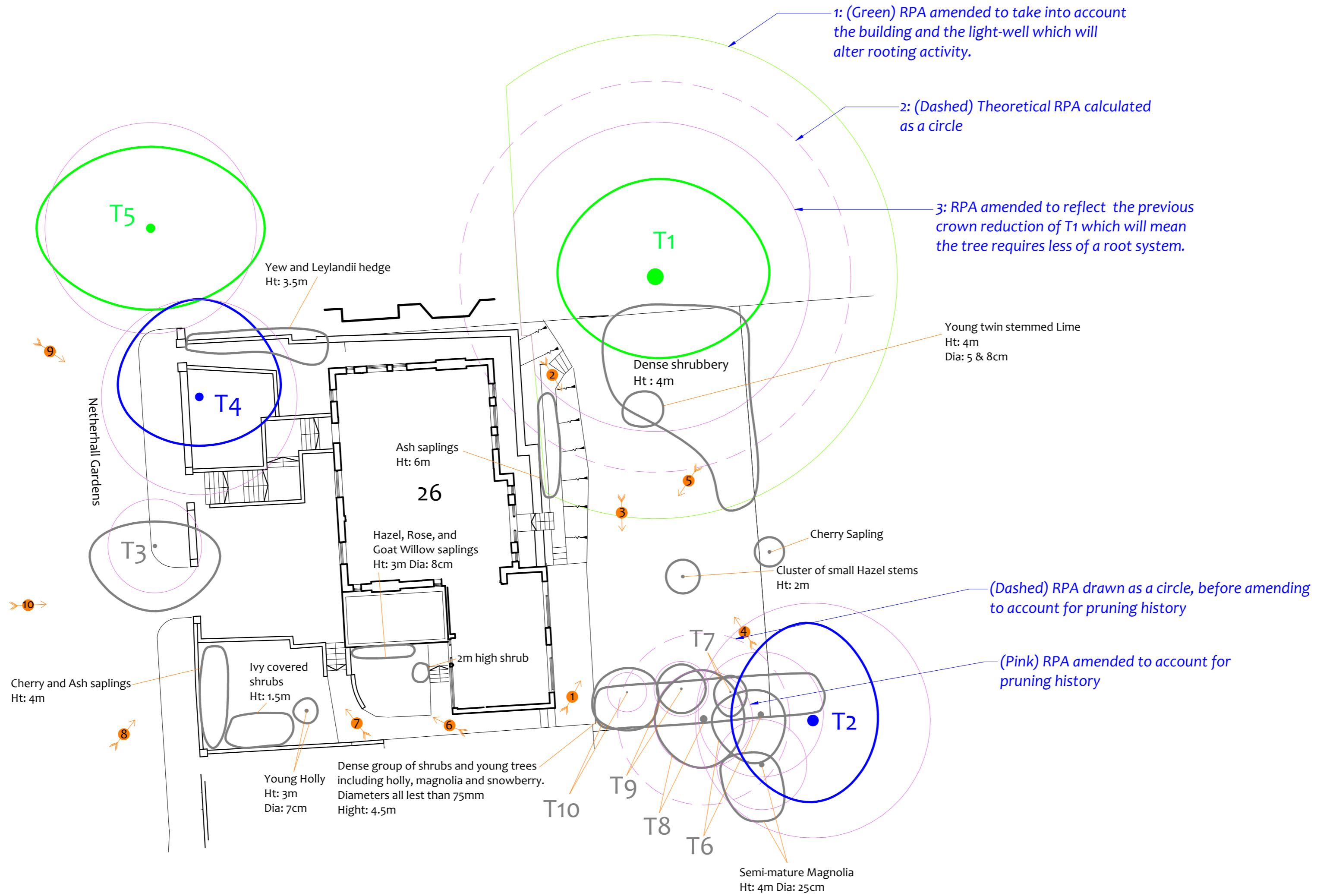
Photo 4

See the accompanying report for more photographs



Tree Constraints Plan

(Existing Layout)



Drawing No: CCL 09552 / TCP Rev: 3

Title: Tree Constraints Plan (Existing Layout)

Site: 26 Netherhall Gardens Camden, NW3 5TL

Scale: 1:200 Paper Size: A2

Tree Retention Categories
Stems & canopies shown

- Category A tree
- Category B tree
- Category C tree
- Category U tree

Trees of high quality with an estimated life expectancy of 40+ years. Usually large trees with significant presence or smaller trees with excellent form. Retention of these trees is highly desirable.

Trees of moderate quality with a life expectancy of 20+ years. Usually maturing trees, or younger trees with good form. Retention of these trees is desirable though less than Category A trees

Unremarkable trees of low quality and merit. Individual specimens are not considered to be a material planning consideration.

Trees unsuitable for retention due to their very poor condition.

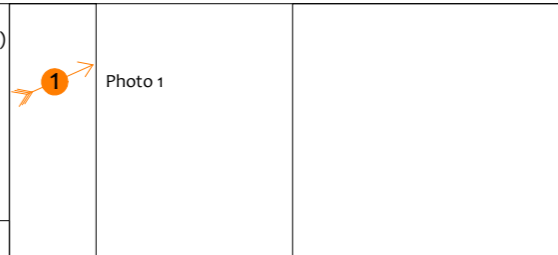
Tree Constraints Plan

BS 5837 Root Protection Area (radius = 12xstem diameter)

Root Protection Area needing amendment due to site conditions, e.g. presence of existing road or building.

Root Protection Area having been amended to account for site conditions

T1 = Tree No 1 G2 = Group No 2 H3 = Hedge No 3

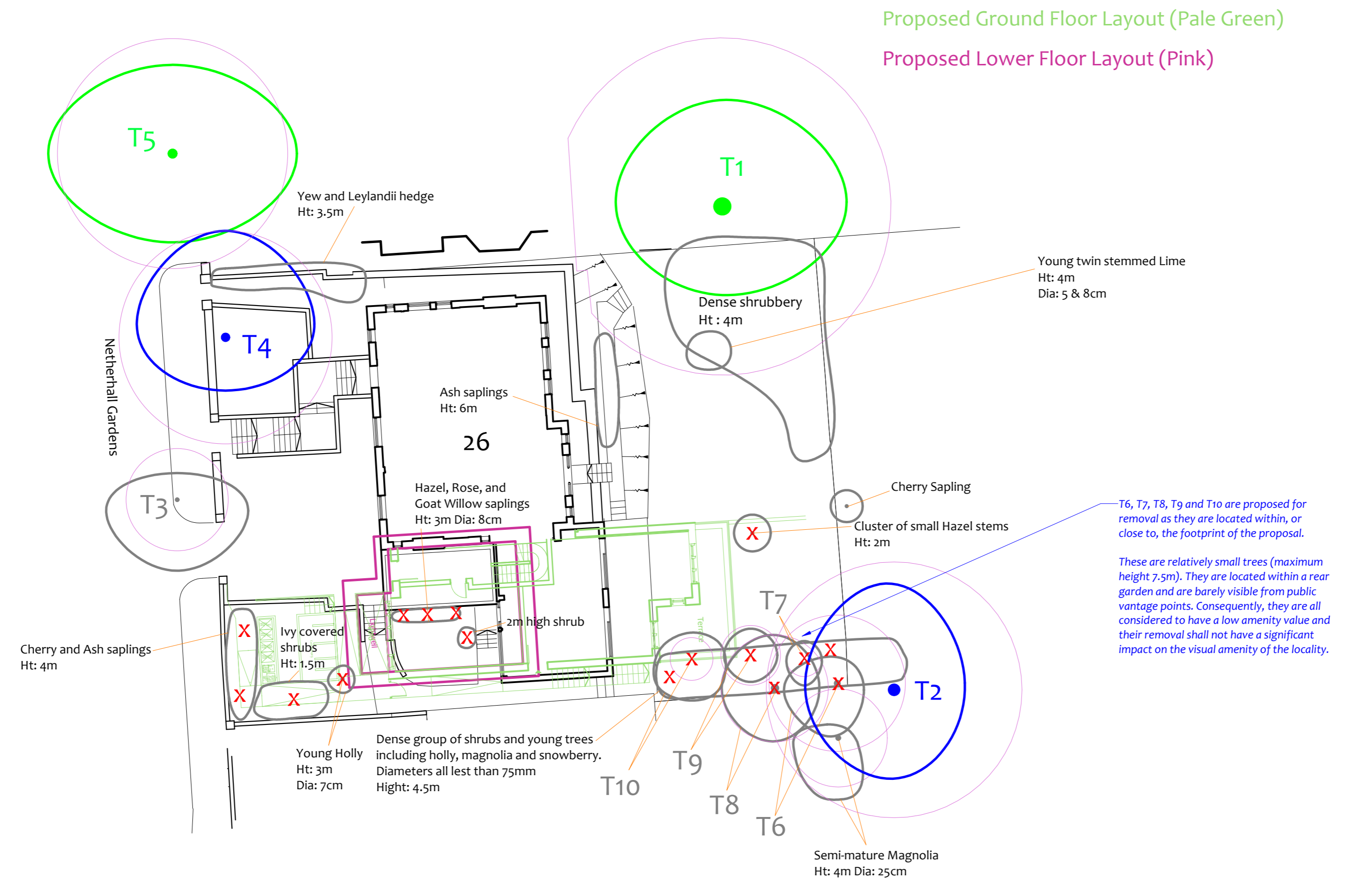


Tree Ref.	Species	Height (m)	Root Protection Area		
			Radius (m)	m ²	Square (m)
T1	Oak	18	12.0	452	21.3
T2	Lime	18	8.2	209	14.5
T3	Cherry	9	2.9	26	5.1
T4	Lime	16	6.0	113	10.6
T5	Silver Maple	19	6.5	132	11.5
T6	Lime	6.5	3.8	46	6.8
T7	Holly	5	1.0	3	1.8
T8	Lime	10	5.3	88	9.4
T9	Yew	4.5	1.7	9	3.0
T10	Holly	6.5	1.2	5	2.1



Impact Assessment Plan

(Existing Layout with Proposals Overlaid)



Tree Ref.	Species	Height (m)	Root Protection Area		
			Radius (m)	m ²	Square (m)
T1	Oak	18	12.0	452	21.3
T2	Lime	18	8.2	209	14.5
T3	Cherry	9	2.9	26	5.1
T4	Lime	16	6.0	113	10.6
T5	Silver Maple	19	6.5	132	11.5
T6	Lime	6.5	3.8	46	6.8
T7	Holly	5	1.0	3	1.8
T9	Yew	4.5	1.7	9	3.0
T10	Holly	6.5	1.2	5	2.1

Drawing No: CCL 09552 / IAP Rev: 4
 Title: Impact Assessment Plan (Existing Layout with Proposals Overlaid)
 Site: 26 Netherhall Gardens Camden, NW3 5TL
 Scale: 1:200 Paper Size: A2

Tree Retention Categories
 Stems & canopies shown

- Category A tree
- Category B tree
- Category C tree
- Category U tree

Trees of high quality with an estimated life expectancy of 40+ years. Usually large trees with significant presence or smaller trees with excellent form. Retention of these trees is highly desirable.

Trees of moderate quality with a life expectancy of 20+ years. Usually maturing trees, or younger trees with good form. Retention of these trees is desirable though less than Category A trees

Unremarkable trees of low quality and merit. Individual specimens are not considered to be a material planning consideration.

Trees unsuitable for retention due to their very poor condition.

Impact Assessment Plan

BS 5837 Root Protection Area (radius = 12xstem diameter)

Root Protection Area needing amendment due to site conditions, e.g. presence of existing road or building.

Root Protection Area having been amended to account for site conditions

Tree to be removed to facilitate the proposal

Tree to be removed due to its low quality

Proposed pruning

T1 = Tree No 1 G2 = Group No 2 H3 = Hedge No 3

Tree Ref.	Species	Height (m)	Radius (m)	m ²	Square (m)
T1	Oak	18	12.0	452	21.3
T2	Lime	18	8.2	209	14.5
T3	Cherry	9	2.9	26	5.1
T4	Lime	16	6.0	113	10.6
T5	Silver Maple	19	6.5	132	11.5
T6	Lime	6.5	3.8	46	6.8
T7	Holly	5	1.0	3	1.8
T9	Yew	4.5	1.7	9	3.0
T10	Holly	6.5	1.2	5	2.1

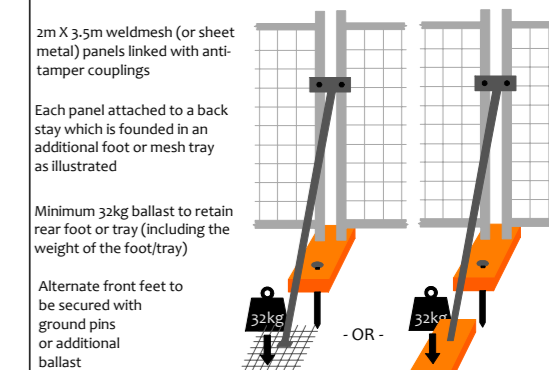


Tree Protection Plan

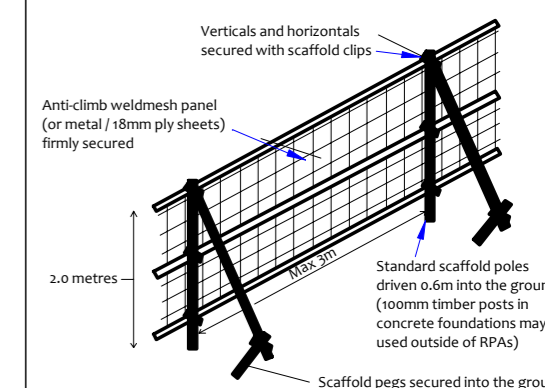
Tree Protection Barriers:

	Fixed protective barrier: The 'In-Ground System' or the 'Backstay System'. To remain in place for all construction activity		Construction Exclusion Zone Stem protected to a height of 2.5m with thick cloth & wire
	Moveable protective barrier: The 'Backstay System'. To remain in place except when approved works are being undertaken in the Restricted Zone		

The 'Back Stay System'



The 'In-Ground' System

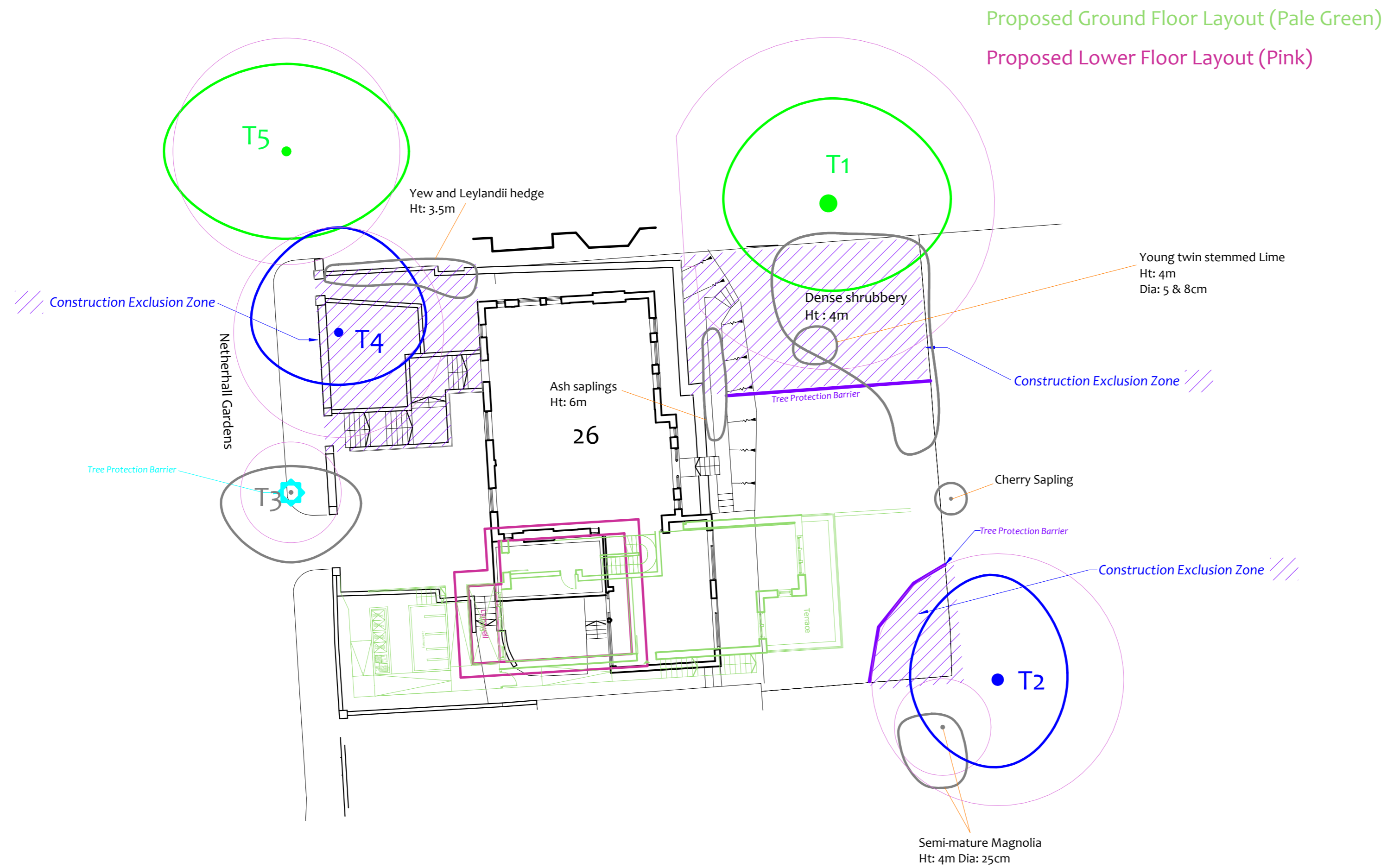


Construction Exclusion Zone

Within this area the following restrictions shall apply:

- No excavation or land regrading whatsoever.
- No storage of materials, rubble, soil or spoil.
- No fires within the exclusion zone or within 10m of any tree canopy.
- No site cabins or other temporary structures.
- No discharge of polluted water, cement or chemicals of any kind.
- No use of any machinery, or passage or parking of vehicles.
- No tree works without council consent.

Restrictions are detailed within the accompanying Method Statement



Drawing No:	CCL 09552 / TPP Rev: 5
Title:	Tree Protection Plan (Existing Layout with Proposals Overlaid)
Site:	26 Netherhall Gardens Camden, NW3 5TL
Scale:	1:200
Paper Size:	A2



Tree Retention Categories	
Stems & canopies shown	
	Category A tree
	Category B tree
	Category C tree
	Category U tree

- Trees of high quality with an estimated life expectancy of 40+ years. Usually large trees with significant presence or smaller trees with excellent form. Retention of these trees is highly desirable.
- Trees of moderate quality with a life expectancy of 20+ years. Usually maturing trees, or younger trees with good form. Retention of these trees is desirable though less than Category A trees
- Unremarkable trees of low quality and merit. Individual specimens are not considered to be a material planning consideration.
- Trees unsuitable for retention due to their very poor condition.

Tree Protection Plan

- BS 5837 Root Protection Area (radius = 12xstem diameter)
 - Root Protection Area needing amendment due to site conditions, e.g. presence of existing road or building.
 - Root Protection Area having been amended to account for site conditions
- T1 = Tree No 1 G2 = Group No 2 H3 = Hedge No 3

Tree Ref.	Species	Height (m)	Root Protection Area		
			Radius (m)	m ²	Square (m)
T1	Oak	18	12.0	452	21.3
T2	Lime	18	8.2	209	14.5
T3	Cherry	9	2.9	26	5.1
T4	Lime	16	6.0	113	10.6
T5	Silver Maple	19	6.5	132	11.5
T6	Lime	6.5	3.8	46	6.8
T7	Holly	5	1.0	3	1.8
T8	Lime	10	5.3	88	9.4
T9	Yew	4.5	1.7	9	3.0
T10	Holly	6.5	1.2	5	2.1



Hedge Planting Schedule:

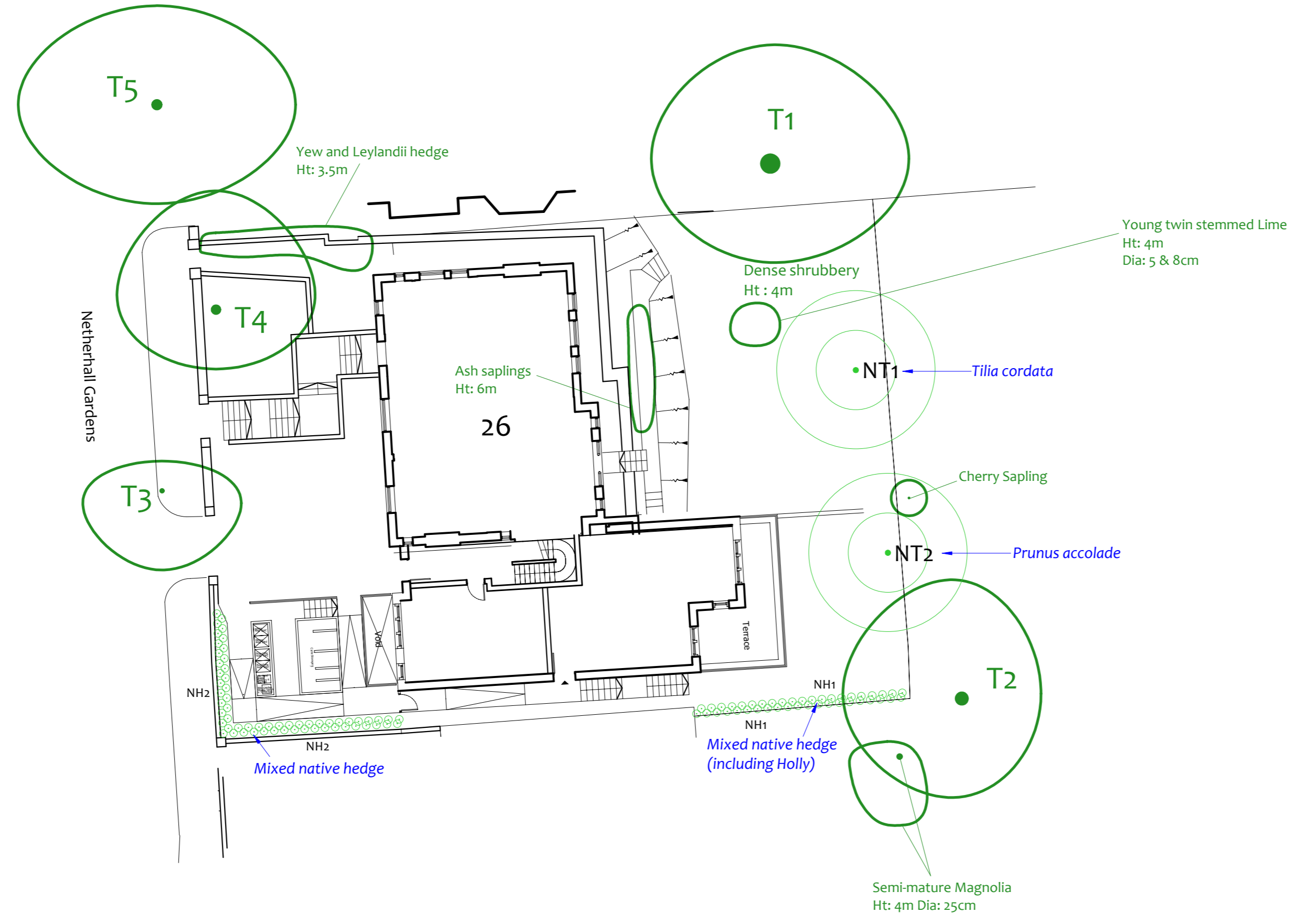
Ref:	Species:	Hedge Length	No:	Size:
NH1	Field Maple, Hazel, Holly & Hawthorn	10.5m in length, 0.5m spacing, double staggered	44 specimens	Bare root 40-60cm
NH2	Field Maple, Hazel & Hawthorn	15m in length, 0.5m spacing	60 specimens	Bare root 40-60cm

Tree Planting Schedule:

Ref No	Species	N°	Size
NT1	Small-leaved Lime <i>Tilia cordata</i>	1	Heavy Standard 12-14 cm girth, 3.6 – 4.25m height
NT2	Cherry 'Accolade' <i>Prunus accolade</i>	1	Standard 8-10cm girth, 2.5-3m height

Proposed Planting Plan

(Tree Planting)



Tree Ref.	Species	Height (m)	Root Protection Area		
			Radius (m)	m²	Square (m)
T1	Oak	18	12.0	452	21.3
T2	Lime	18	8.2	209	14.5
T3	Cherry	9	2.9	26	5.1
T4	Lime	16	6.0	113	10.6
T5	Silver Maple	19	6.5	132	11.5
T6	Lime	6.5	3.8	46	6.8
T7	Holly	5	1.0	3	1.8
T8	Lime	10	5.3	88	9.4
T9	Yew	4.5	1.7	9	3.0
T10	Holly	6.5	1.2	5	2.1

Drawing No: CCL 09552 / PPP Rev: 2
 Title: Proposed Tree Planting Plan (Proposed Layout)
 Site: 26 Netherhall Gardens Camden, NW3 5TL
 Scale: 1:200 Paper Size: A2



Proposed Hedge Planting

- NH1: Proposed location of new native hedge reference NH1.
- NH2: Proposed location of new native hedge reference NH2.

Proposed Tree Planting

- NT1: Proposed new tree reference NT1, showing future canopy at 2m and 4m (radius)

Existing Trees

- T1: Existing tree reference.

Proposed Planting Plan