

Barter street

Southampton place

entrance N° 20

entrance N° 21

entrance N° 22

entrance N° 23

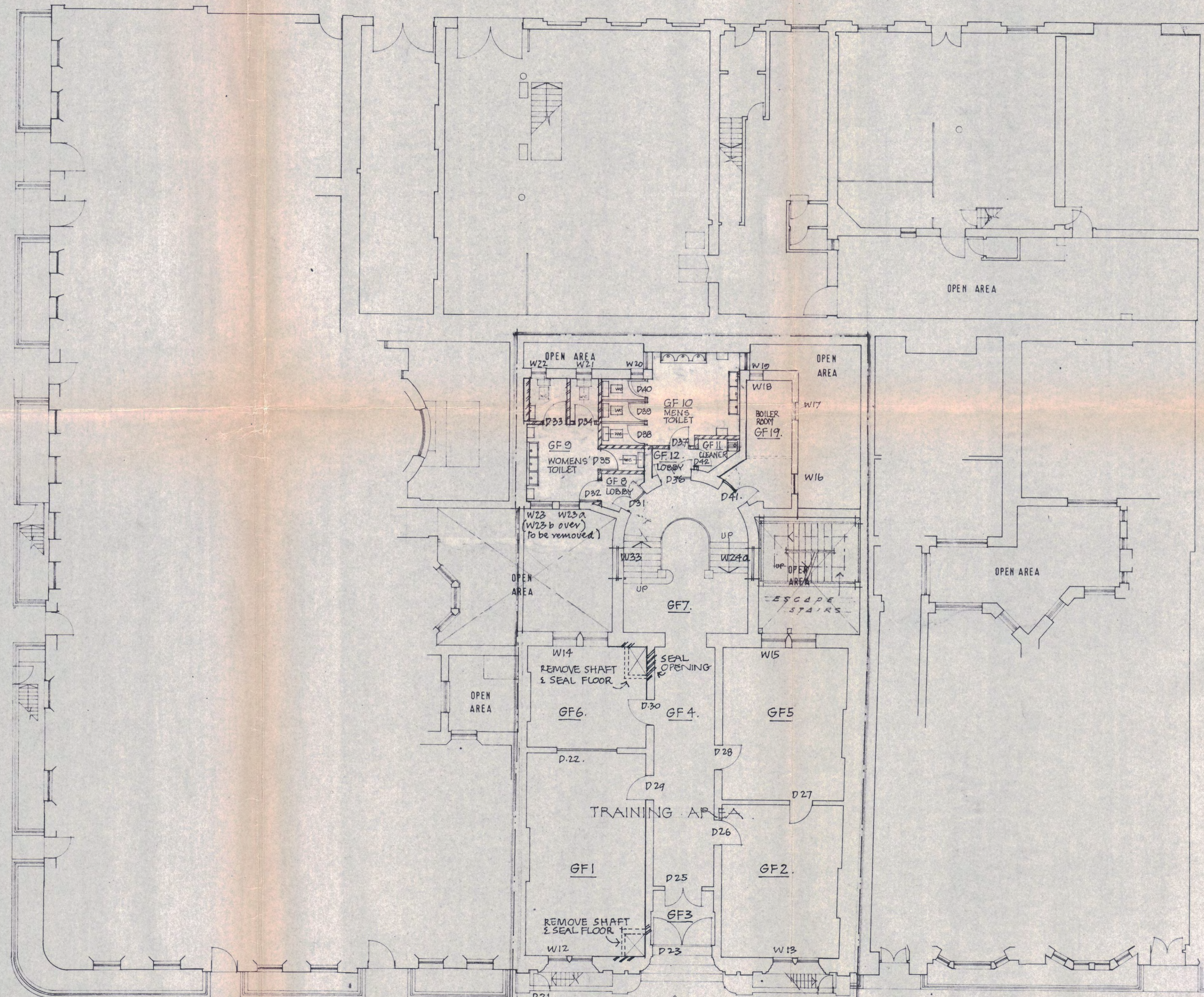
entrance N° 46 / 47

entrance N° 1

entrance N° 2/3

entrance N° 4

entrance N° 4A



NOTE: BROKEN LINE INDICATES THE EXTENT OF THE PROPERTY INCLUDED IN THE CONTRACT  
Bloomsbury square

LONDON BOROUGH OF CAMDEN  
TOWN AND COUNTRY PLANNING ACTS  
24 APR 1979  
PLANS APPROVED  
ON BEHALF OF THE COUNCIL

CTP/N14/23/E/27990

contract title <b>2/3 BLOOMSBURY SQ.</b>	drawing title <b>GROUND FLOOR</b>	scale 1:100
T P Bennett & Son Chartered Architects 262 High Holborn WC1V 7DU Telephone 01 406 9277	contract drawing number <b>5296 SK 25</b>	date Jan. 1979
	revision	drawn