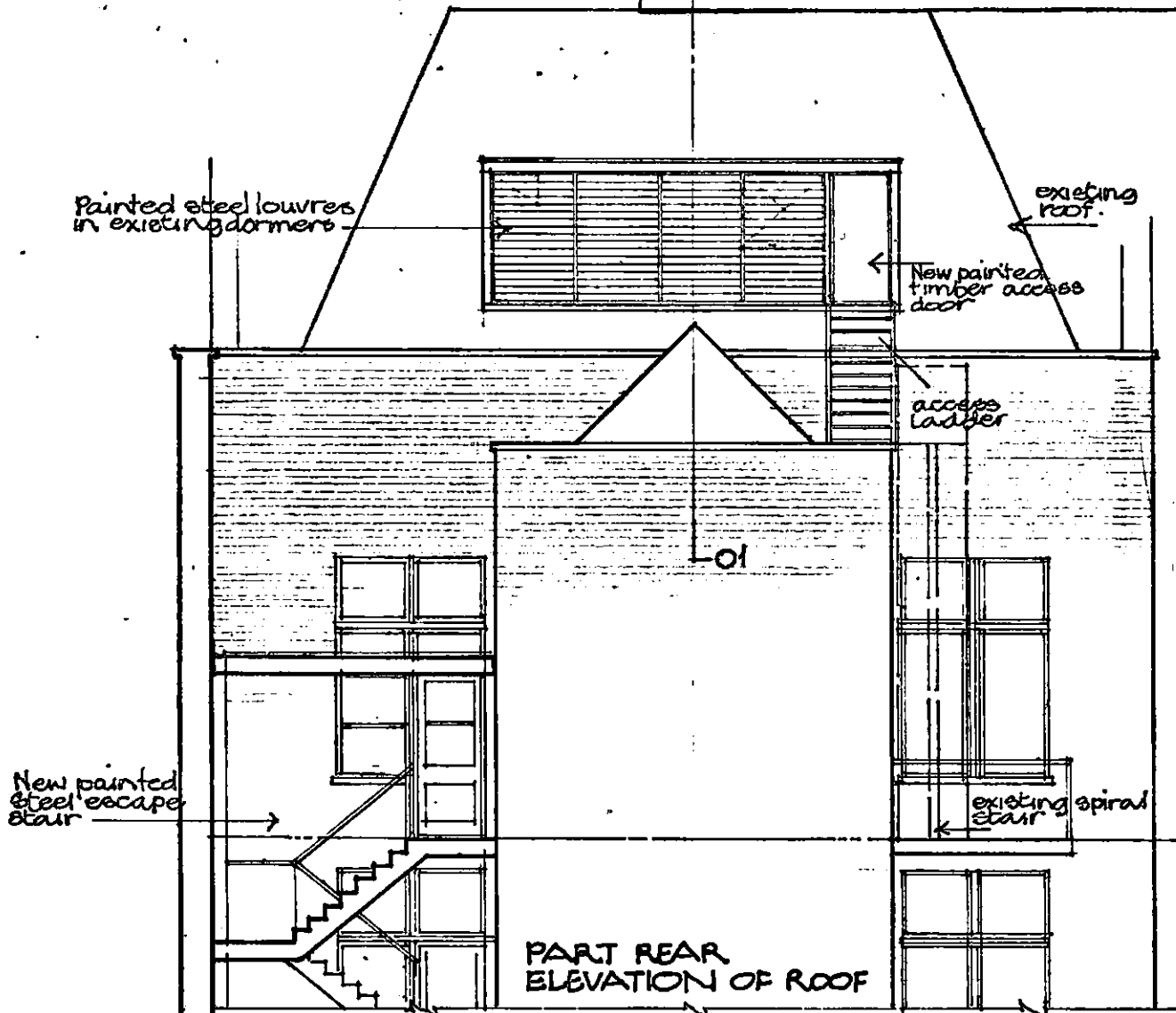
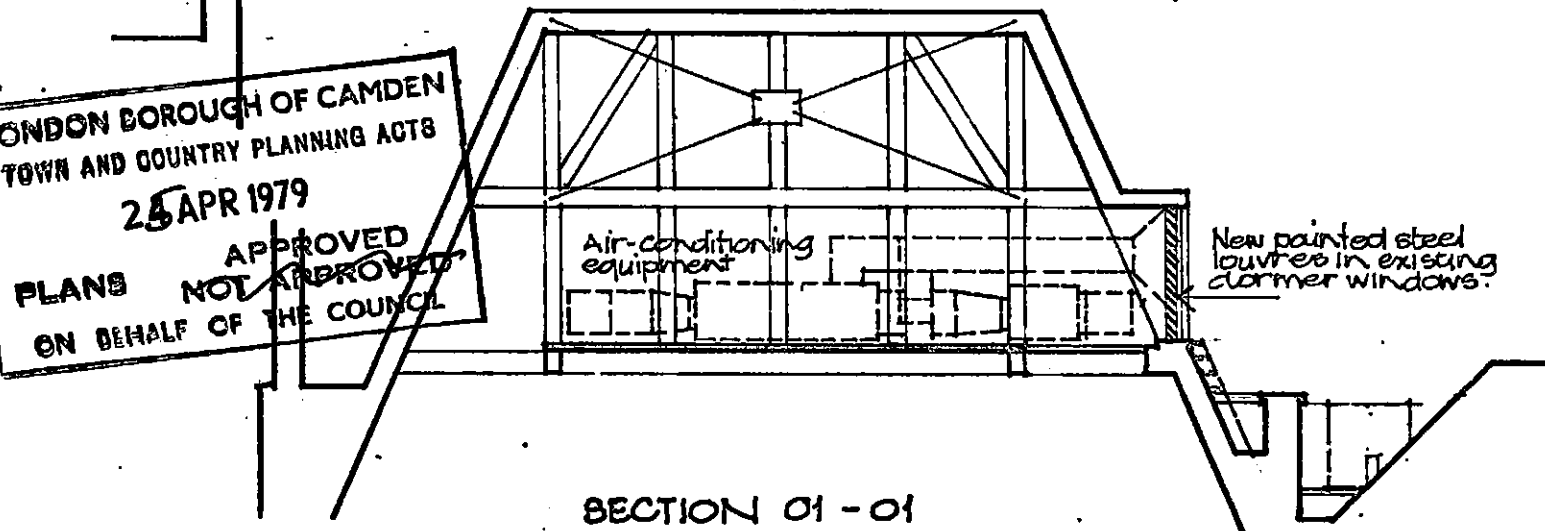


GTP/N14/23/E/HB2158



PART REAR ELEVATION OF ROOF



SECTION 01 - 01

LONDON BOROUGH OF CAMDEN  
TOWN AND COUNTRY PLANNING ACTS  
25 APR 1979  
PLANS ~~NOT APPROVED~~ APPROVED  
ON BEHALF OF THE COUNCIL

contract title  REFURBISHMENT 2 & 3 BLOOMSBURY SQUARE	drawing title  DETAIL OF ROOF : REAR ELEVATION	scale 1:100
		date MAR. 79
T P Bennett & Son Chartered Architects 262 High Holborn WC1V 7DU Telephone 01 405 9277	contract	drawn <i>[Signature]</i>
	drawing number 5296 51	revision