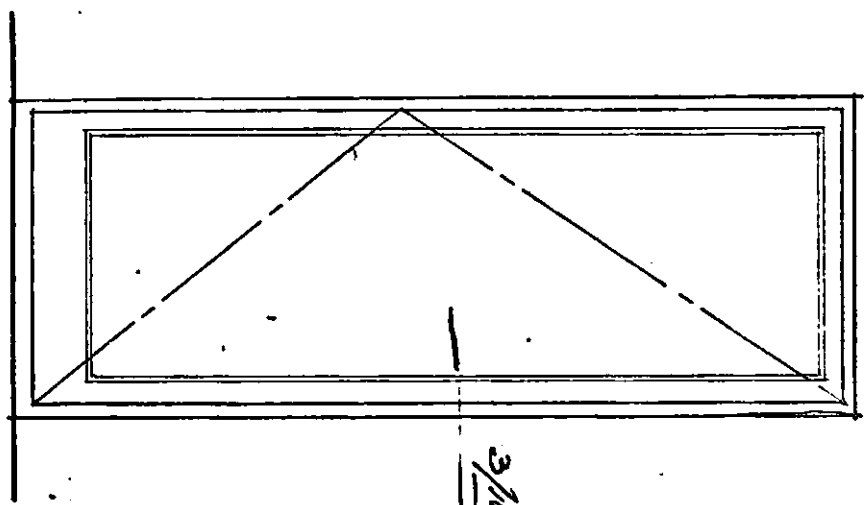
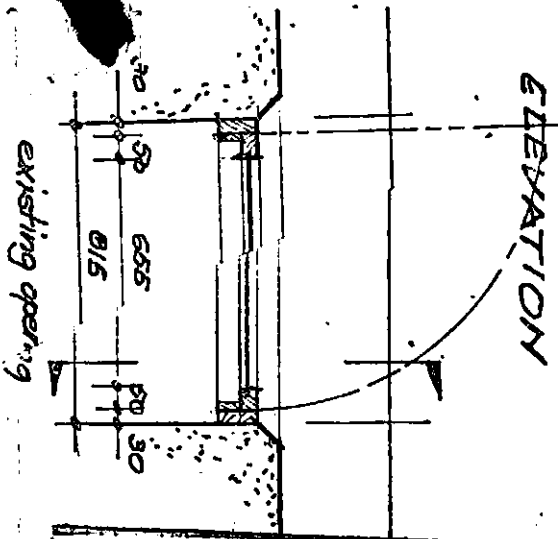
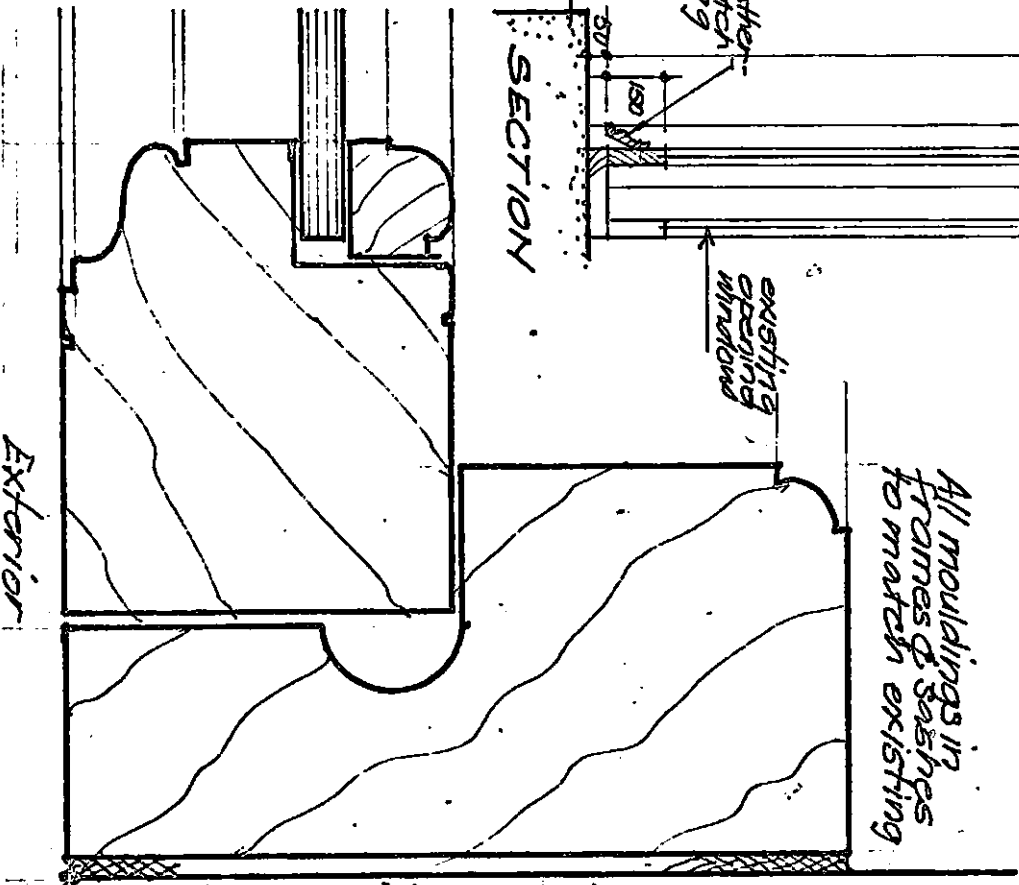
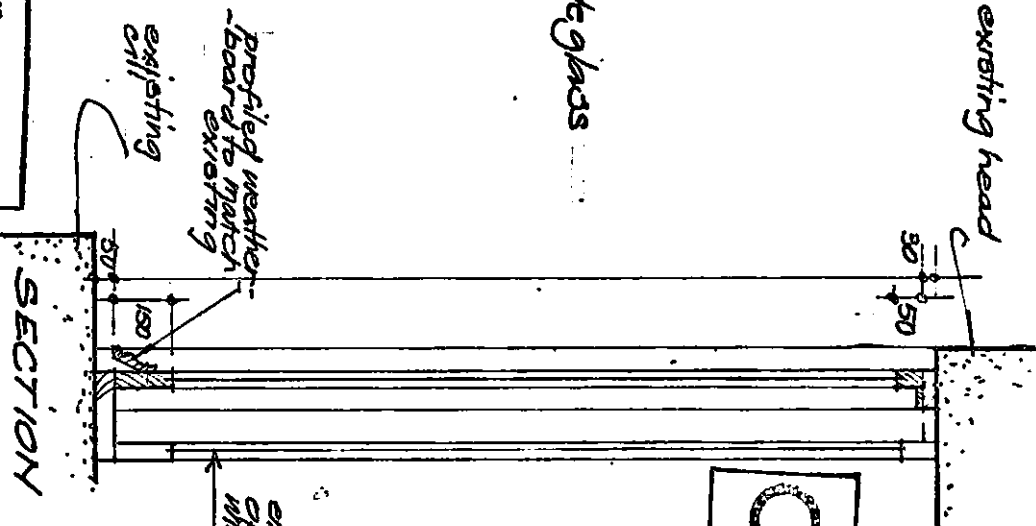


5 No Sashes



LONDON BOROUGH OF CAMDEN  
TOWN AND COUNTRY PLANNING ACTS  
24 APR 1979  
PLANS APPROVED  
NOT APPROVED  
ON BEHALF OF THE COUNCIL



CTP/N14/23 / E / 148 / 2158

contract title <b>Refurbishment 2 &amp; 3 Bloomsbury Square</b>	drawing title <b>Sketch for Hardwood Ext. opening sashes to be added to 2nd Floor Windows Front Elevation.</b>	scale 1:20 of 1:1
		date Mar. 79
T P Bennett & Son Chartered Architects 262 High Holborn WC1V 7DU Telephone 01 405 9277	contract 5296	drawing number 49
	revision	